

DOOGEE FIRE6

DOOGEE Fire 6 Rugged Smartphone User Manual

Model: FIRE6

INTRODUCTION

The DOOGEE Fire 6 is a robust and versatile rugged smartphone designed for demanding environments and users who require advanced features like thermal imaging. It combines military-grade durability with high-performance specifications, including a powerful processor, ample memory, and a long-lasting battery. This manual provides essential information on setting up, operating, and maintaining your device to ensure optimal performance and longevity.

PRODUCT OVERVIEW

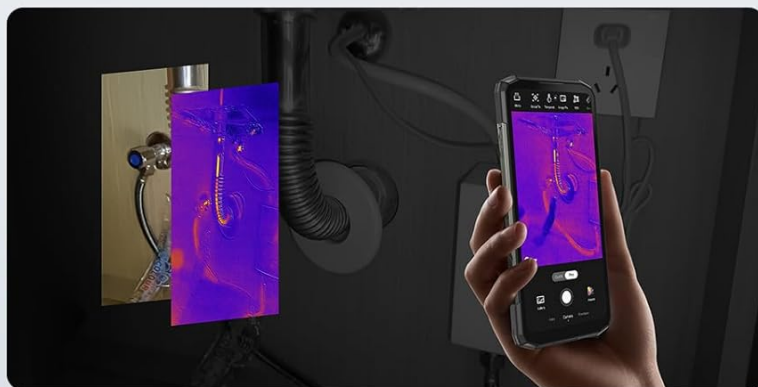


Overall Design: The DOOGEE Fire 6 features a rugged design with a mechanical texture, built to withstand harsh conditions. The image shows both the front display with thermal imaging overlay and the back panel highlighting the camera module and durable casing.

Revolutionizing Thermal Imaging

8MP Fusion Camera for Unparalleled Clarity
Dual-Light Fusion Algorithm

Dual-Light Fusion Algorithm



8MP
Fusion Camera



160 × 120 Resolution



12µm Pixel
spacing

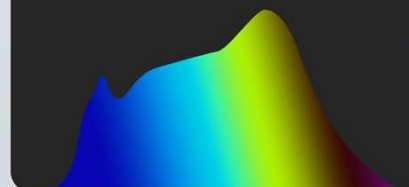


<10ms Thermal
time constant

Thermometric accuracy:
2%

Thermometric range:

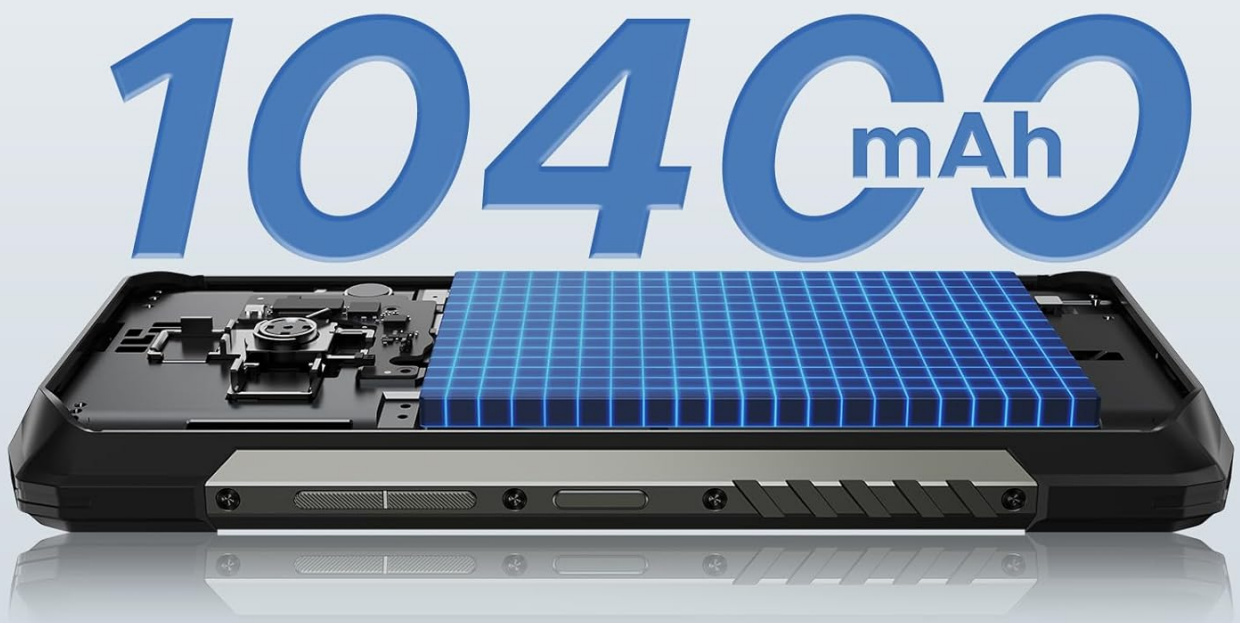
-15°C~150°C (high quality),
50°C~550°C (wide range)



Advanced Thermal Imaging: Equipped with an 8MP thermal camera, the Fire 6 detects heat sources with precision. It features a dual-light fusion algorithm for enhanced clarity, 160x120 resolution, 12µm pixel spacing, and a thermometric range from -15°C to 550°C with 2% accuracy. This allows for detailed thermal analysis in various applications.

10400mAh Large Battery

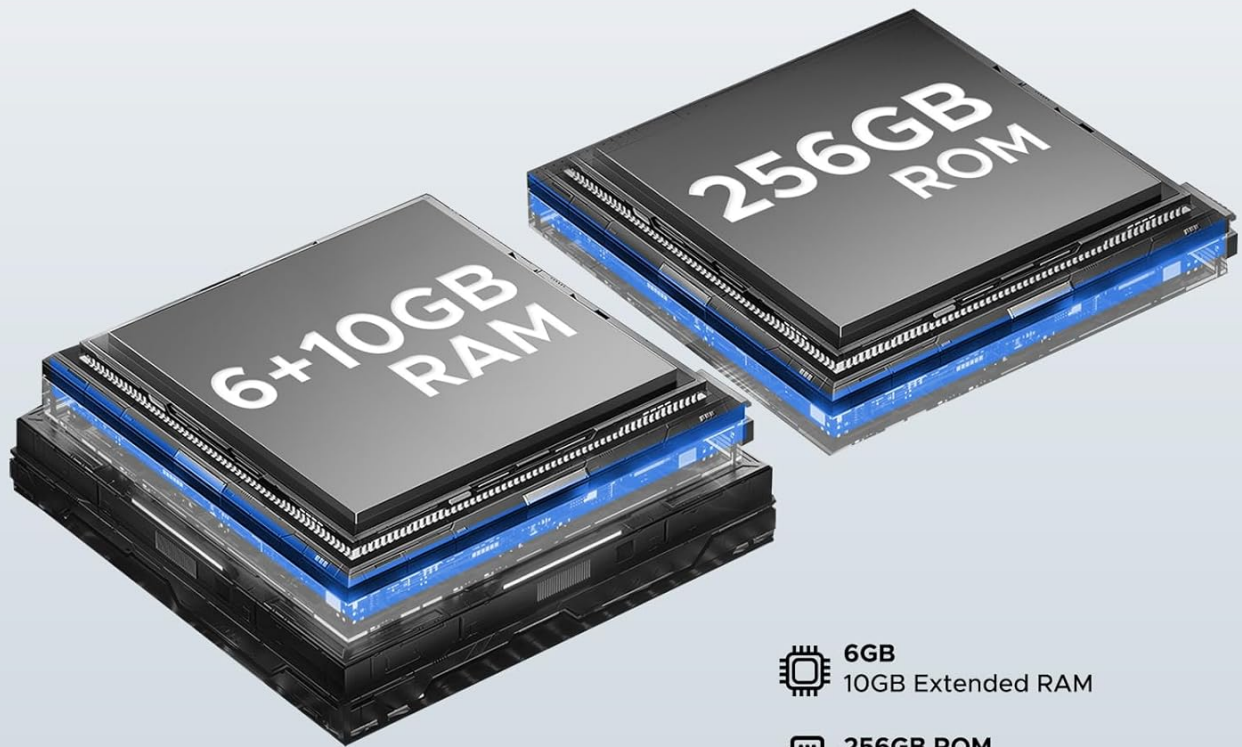
Longlasting battery life meets fast charging, enjoy days-long battery life on a single charge, freeing you from the anxiety of frequent power outs.



Massive 10400mAh Battery: The Fire 6 boasts a large 10400mAh battery, providing extended usage times. It supports 18W fast charging and OTG reverse charging, allowing the phone to act as a portable power bank for other devices.

Powerful Octa-core Processor

Powered by the Spreadtrum T606 octa-core processor, our phones are able to handle high load situations with ease,



Powerful Performance: Powered by a Spreadtrum T606 octa-core processor, the Fire 6 offers smooth multitasking. It comes with 16GB RAM (6GB fixed + 10GB expandable) and 256GB ROM, expandable up to 2TB via TF card for extensive storage needs.

6.56" HD+ IPS Notch-less Punch Display

Immerse yourself in the brilliance of a large 6.56" HD+ screen that brings every image to life with rich colors and sharp details.



90 Hz
Refresh Rate

84%
Screen-to-Body Ratio

720*1612 HD+
Screen Resolution

1500:1
Contrast

Vibrant Display: The device features a 6.56-inch HD+ IPS display with a 90Hz refresh rate, providing clear and fluid visuals. The screen is protected by Corning Gorilla Glass for enhanced durability.

Powerful Imaging Capability



Advanced Camera System: The Fire 6 includes a 50MP AI main camera, an 8MP front camera, and an 8MP fusion lens. It supports dual-light fusion technology for improved low-light performance and features like HDR, portrait, and panorama modes.

SETUP GUIDE

- 1. Insert SIM/TF Card:** Locate the SIM card tray on the side of the phone. Use the provided SIM ejector tool to open the tray. Insert your Nano-SIM cards and/or a TF (microSD) card into the designated slots. Ensure the cards are correctly oriented before reinserting the tray.
- 2. Power On:** Press and hold the Power button (usually on the right side) until the DOOGEE logo appears.
- 3. Initial Setup:** Follow the on-screen prompts to complete the initial setup. This includes selecting your language, connecting to Wi-Fi, setting up your Google account, and configuring security features like face unlock or fingerprint recognition.
- 4. Charge Battery:** For optimal performance, fully charge the device before first use. Connect the provided Type-C USB cable to the phone and the charger, then plug the charger into a power outlet.

Polymer Cooling Technology

The Fire 6 incorporates a highly effective polymer cooling material that efficiently dissipates heat generated by the processor and key components, resulting in a substantial reduction in the overall temperature of the device.



Triple Card Slot: The Fire 6 supports dual SIM cards and a TF card simultaneously, allowing for flexible connectivity and expanded storage up to 2TB.

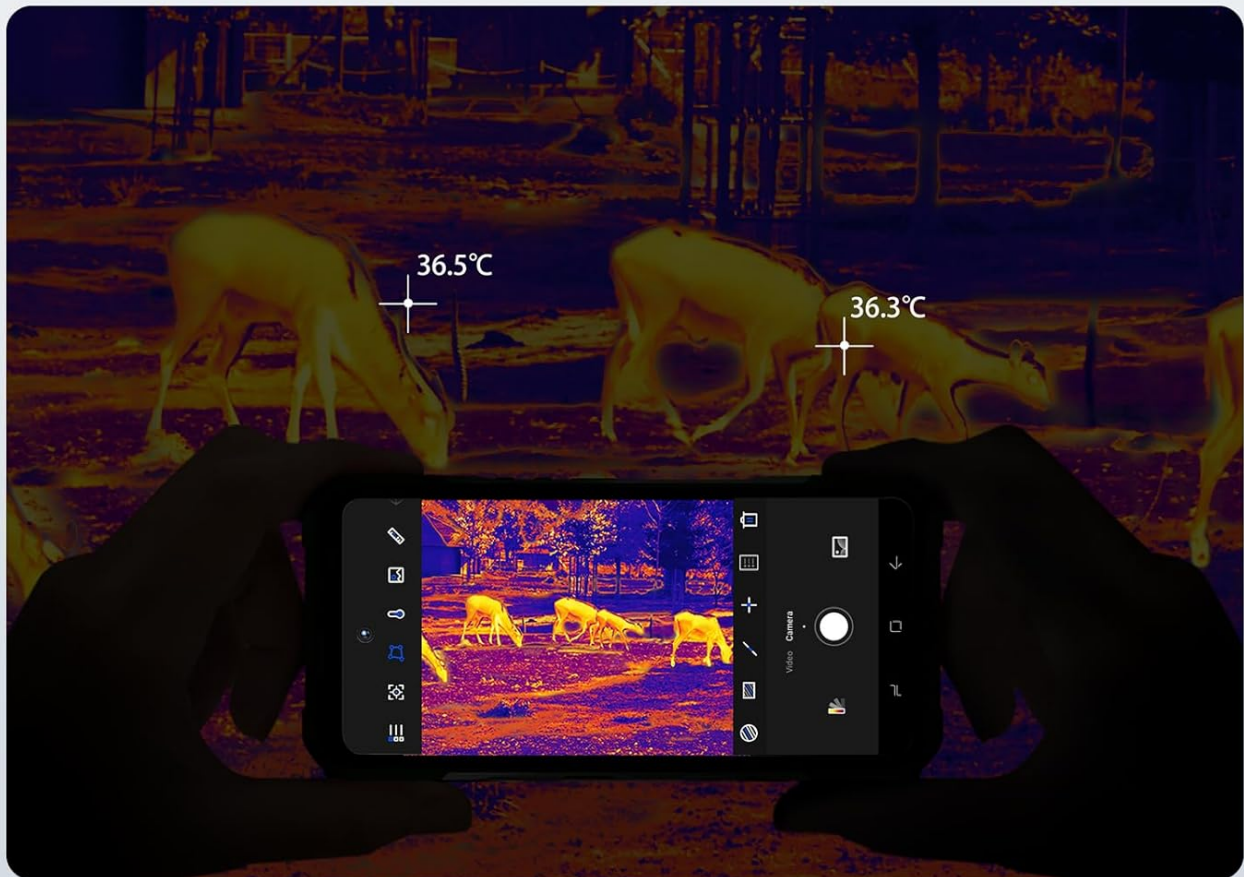
OPERATING INSTRUCTIONS

Using the Thermal Imaging Camera

The DOOGEE Fire 6's integrated thermal camera is a powerful tool for various applications, from home inspections to outdoor exploration. To use it:

1. **Launch ThermalEye App:** Locate and open the "ThermalEye" application on your phone's home screen or app drawer.
2. **View Thermal Feed:** The app will display a real-time thermal image. You can adjust settings like color palettes, temperature range, and measurement points within the app interface.
3. **Capture Images/Videos:** Use the on-screen buttons to capture thermal images or record videos. The dual-light fusion technology enhances clarity by overlaying visual details onto the thermal image.

Outdoor Adventures



Outdoor Thermal Imaging: This image demonstrates the thermal camera's capability in an outdoor setting, highlighting heat signatures of animals against the cooler environment. This feature is useful for wildlife observation or navigating in low-light conditions.

Your browser does not support the video tag.

DOOGEE Fire 6 Rugged Smartphone Overview: This video provides a comprehensive look at the DOOGEE Fire 6, showcasing its design, thermal imaging capabilities, powerful processor, camera features, and rugged build. It highlights the phone's suitability for various demanding tasks and environments.

General Smartphone Usage

- **Navigation:** The Fire 6 runs on Android 14, offering an intuitive user interface. Swipe gestures and on-screen buttons allow for easy navigation between apps and menus.
- **Security:** Utilize the face unlock or side-mounted fingerprint sensor for quick and secure access to your device.
- **Connectivity:** Connect to Wi-Fi networks, pair Bluetooth devices, and manage your dual SIM settings through the 'Settings' menu.
- **Camera:** Open the standard camera app to capture photos and videos using the 50MP main camera or 8MP front camera. Explore modes like HDR, portrait, and panorama for diverse photography options.

The Latest Android 14 System

Revolutionize Your Device



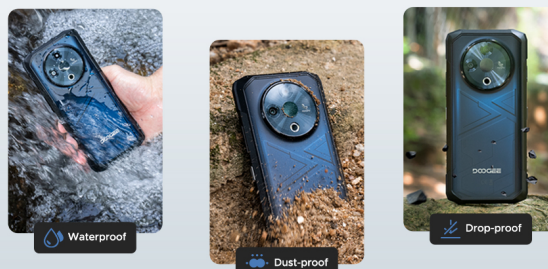
Android 14 System: The Fire 6 operates on the latest Android 14 system, providing an enhanced and secure user experience with features like smart motion sensing, screen awareness, glove mode, real-time subtitles, and dual system mode.

DURABILITY AND PROTECTION

The DOOGEE Fire 6 is engineered for extreme durability, meeting stringent industry standards:

- **IP68 & IP69K Certified:** This certification ensures the phone is highly resistant to dust and water. It can withstand immersion in water up to 1.5 meters for 30 minutes.
- **MIL-STD-810H Compliant:** The device has passed military-grade tests for shock, vibration, extreme temperatures (-30°C to 55°C), humidity, and more, making it suitable for harsh environments.
- **Rugged Construction:** Built with aerospace-grade high-strength titanium alloy, Bayer TPU anti-drop/anti-abrasion materials, and PC/PMMA composite materials, the Fire 6 offers superior protection against drops and impacts.

IP68 • IP69K • MIL-STD-810H



Certified Durability: The image illustrates the DOOGEE Fire 6's compliance with IP68, IP69K, and MIL-STD-810H standards, showcasing its waterproof, dustproof, and drop-proof capabilities. This ensures reliability in challenging conditions.

CONNECTIVITY AND NAVIGATION

- **Dual SIM Support:** The Fire 6 supports two Nano-SIM cards, allowing you to manage personal and work numbers or use different carriers simultaneously.
- **Expandable Storage:** In addition to its internal 256GB ROM, storage can be expanded up to 2TB using a TF (microSD) card.
- **Global Navigation Systems:** Equipped with GPS, GLONASS, Galileo, and Beidou, the phone provides accurate and reliable positioning for navigation in diverse environments.

- **Wireless Technologies:** Features Wi-Fi 5 for fast internet access and Bluetooth 5.0 for seamless connection to wireless accessories.



Comprehensive Connectivity: This image highlights the Fire 6's accurate navigation system (GPS, Glonass, Galileo, Beidou) and its triple card slot, which supports dual SIM cards and expandable storage, ensuring you stay connected and on track.

MAINTENANCE AND CARE

- **Cleaning:** Wipe the phone with a soft, damp cloth. For stubborn dirt, use a mild soap solution. Ensure all ports are closed before cleaning with liquids.
- **Port Protection:** Always ensure the rubber seals covering the charging port and SIM tray are properly closed to maintain water and dust resistance.
- **Temperature:** Avoid exposing the phone to extreme temperatures outside its operating range (-30°C to 55°C) for prolonged periods.
- **Screen Protection:** While the screen is made of Corning Gorilla Glass, using the pre-applied screen protector and an additional anti-explosion film (included) can further prevent scratches and damage.
- **Software Updates:** Regularly check for and install system updates to ensure optimal performance, security, and access to new features.

TROUBLESHOOTING

Problem	Possible Solution
Phone does not power on.	Ensure the battery is charged. Connect the charger and wait a few minutes before attempting to power on again. If unresponsive, try a forced restart (refer to device-specific instructions for button combinations).
Thermal camera not working.	Check if the "ThermalEye" app is updated. Ensure there are no physical obstructions on the thermal camera lens. Restart the app or the phone.
Poor network signal (4G/5G).	Verify SIM card insertion. Check network settings (Settings > Network & internet > Mobile network). Ensure you are in an area with network coverage. Note: This model is primarily a 4G device, 5G compatibility may vary by region/carrier.
Slow performance.	Close unused apps. Clear cache (Settings > Storage > Cached data). Restart the phone. Consider uninstalling rarely used applications.

Problem	Possible Solution
Battery drains quickly.	Reduce screen brightness. Disable unnecessary features like Wi-Fi, Bluetooth, GPS when not in use. Limit background app activity. Check battery usage in settings to identify power-hungry apps.

SPECIFICATIONS

Feature	Detail
Model Name	FIRE6
Dimensions	2.36 x 7.87 x 11.02 inches
Operating System	Android 14
Display	6.56-inch HD+ IPS (1280x720 pixels), 90Hz Refresh Rate, Corning Gorilla Glass
Processor	Octa-core (Spreadtrum T606)
RAM	16GB (6GB fixed + 10GB expandable)
Internal Storage (ROM)	256GB
Expandable Storage	Up to 2TB via TF card
Main Camera	50MP AI Camera with Dual-Light Fusion
Front Camera	8MP
Thermal Camera	8MP, -15°C to 550°C range, 160x120 resolution, 2% accuracy
Battery Capacity	10400mAh
Charging	18W Fast Charging, OTG Reverse Charging
Durability Ratings	IP68, IP69K, MIL-STD-810H
Connectivity	Wi-Fi 5, Bluetooth 5.0, Dual SIM
Navigation	GPS, GLONASS, Galileo, Beidou
Audio Jack	3.5 mm
Security	Face Unlock, Side Fingerprint Sensor

WHAT'S IN THE BOX

- 1 x DOOGEE Fire 6 Rugged Smartphone
- 1 x Charger
- 1 x Type-C USB Cable
- 1 x Screen-printed Protective Film (Pre-applied)
- 1 x Anti-explosion film

- 1 x Packing Box
- 1 x User Manual
- 1 x Warranty Card



Package Contents: This image displays all items included in the DOOGEE Fire 6 retail package, ensuring users know what to expect upon unboxing their new rugged smartphone.

WARRANTY AND SUPPORT

DOOGEE provides a limited warranty for the Fire 6 Rugged Smartphone. Please refer to the included Warranty Card for specific terms and conditions, including warranty period and coverage details.

For technical support, troubleshooting assistance, or warranty claims, please contact DOOGEE customer service through their official website or the contact information provided in your warranty documentation. Keep your purchase receipt as proof of purchase for warranty services.