

Manuals.plus /

- › Professor PUZZLE /
- › Einstein: The Board Game - Instruction Manual

Professor PUZZLE EIN11751

Einstein: The Board Game - Instruction Manual

Brand: Professor PUZZLE

INTRODUCTION

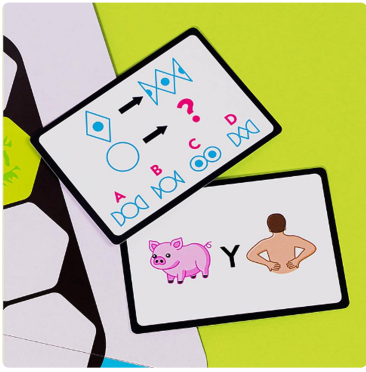
Welcome to Einstein: The Board Game! This game challenges players to channel their inner Einstein by solving a variety of puzzle challenges. It is designed for 2 to 10 players, aged 12 years and up, and is an ultimate test of speed, strategy, and clever thinking.

The objective is to be the first team to get four game pieces in a row on the board by winning puzzle challenges and strategically blocking opponents.

WHAT'S IN THE BOX



The game box for Einstein: The Board Game, featuring a stylized image of Albert Einstein.



An overhead view of all game components, including the game board, various puzzle cards, game pieces, and the Einstein token.

Your Einstein: The Board Game set should contain the following components:

- 300 Puzzle Cards (featuring 11 different categories)
- 1 Game Board
- 20 Game Pieces (hexagonal tokens in red and blue)
- 1 Wooden Einstein Token
- Instruction Manual (this document)

Please check all contents upon opening the box. If any components are missing or damaged, please contact Professor PUZZLE customer support.

SETUP

1. **Unpack Components:** Carefully remove all game components from the box.
2. **Place Game Board:** Unfold and place the game board on a flat, stable surface. The board features a hexagonal grid.
3. **Separate Puzzle Cards:** Organize the 300 puzzle cards into their respective categories if they are not already separated. Shuffle each category deck thoroughly.
4. **Form Teams:** Divide players into two teams. The game is designed for 2 to 10 players, so teams can range from 1 to 5 players per side.
5. **Distribute Game Pieces:** Each team selects a color (red or blue) and takes their 10 hexagonal game pieces.
6. **Place Einstein Token:** Place the wooden Einstein token in the center hexagon of the game board. This token marks the current challenge space.



The game board with the Einstein token in the center, surrounded by various puzzle cards and game pieces, illustrating the initial setup.

OPERATING (HOW TO PLAY)

Game Objective:

The first team to successfully place four of their game pieces in a consecutive line (horizontally, vertically, or diagonally) on the game board wins.

Gameplay Flow:

1. **Starting the Game:** Determine which team goes first (e.g., by coin toss or agreement).
2. **Choosing a Category:** The active team chooses one of the 11 puzzle categories they wish to attempt.
3. **Drawing a Card:** A player from the opposing team draws a card from the chosen category and reads the challenge aloud.
4. **Solving the Puzzle:** Both teams race to solve the puzzle. The first team to correctly state the answer wins the round.
5. **Placing a Game Piece:** The winning team places one of their hexagonal game pieces on any empty hexagon on the game board. Strategic placement is key to forming a line of four.
6. **Moving the Einstein Token:** After a round, the Einstein token remains on the board. The next round begins with the other team choosing a category.

7. **Blocking Opponents:** Teams should not only focus on their own lines but also on blocking the opposing team from completing their lines of four.
8. **Winning the Game:** The game ends immediately when a team successfully places four of their game pieces in a row.



A close-up view of the game board showing the Einstein token and two example puzzle cards, one with a visual pattern and another with a word puzzle.



An assortment of puzzle cards from different categories, along with red and blue hexagonal game pieces, demonstrating the variety of challenges.

MAINTENANCE

- **Storage:** Store all game components in their original box when not in use to prevent loss or damage. Keep the box in a cool, dry place away from direct sunlight.
- **Cleaning:** Wipe the game board and plastic game pieces with a soft, dry cloth if they become dusty. Do not use abrasive cleaners or liquids, as this may damage the surfaces.
- **Card Care:** Handle puzzle cards with clean, dry hands to prevent smudges and wear. Avoid bending or creasing the cards.
- **Wooden Token:** The wooden Einstein token can be wiped with a dry cloth.

TROUBLESHOOTING

Missing Components:

If any game components are missing upon opening the box, please refer to the "What's in the Box" section and

contact Professor PUZZLE customer support for assistance.

Difficulty with Puzzles:

Some puzzles may be more challenging than others. Encourage teamwork and discussion within your team. If a puzzle is consistently too difficult, consider setting a time limit for answers or allowing a "pass" option for a new card (if agreed upon by all players).

Disputes over Answers:

In case of a dispute over a correct answer, the team that drew the card should have the final say, or a neutral third party can be consulted if available. The goal is to have fun, so friendly resolution is encouraged.

SPECIFICATIONS

Product Name	Einstein: The Board Game
Brand	Professor PUZZLE
Model Number	EIN11751
ASIN	B0DFMM4GKJ
Product Dimensions	10.25 x 10.25 x 2 inches
Item Weight	2.45 pounds
Manufacturer Recommended Age	12 years and up
Number of Players	2 to 10 players
Country of Origin	China
Release Date	March 5, 2025

WARRANTY AND SUPPORT

Professor PUZZLE stands behind the quality of its products. For specific warranty information or to report any issues with your Einstein: The Board Game, please contact Professor PUZZLE customer support directly.

You can find more information and contact details on the official Professor PUZZLE store page [Professor PUZZLE Store](#).