

NEEWER Z880-N

NEEWER Z880-N 2.4G i-TTL Camera Flash Speedlite for Nikon and FC-16 Wireless Trigger Instruction Manual

Model: Z880-N

INTRODUCTION

This manual provides detailed instructions for the NEEWER Z880-N 2.4G i-TTL Camera Flash Speedlite and the accompanying FC-16 2.4G Wireless Camera Shutter Studio Flash Trigger. Please read this manual thoroughly before use to ensure proper operation and to maximize the performance of your equipment. This system is designed for use with Nikon cameras.

PRODUCT COMPONENTS

The NEEWER Z880-N kit includes:

- NEEWER Z880-N Speedlite
- FC-16 2.4G Wireless Camera Shutter Studio Flash Trigger (1 Transmitter, 2 Receivers)
- Rechargeable 7.4V/2600mAh Lithium Battery
- Battery Charger
- Mini Stand
- Protective Case



Image: Overview of the NEEWER Z880-N Speedlite, FC-16 wireless trigger, and included accessories.

SETUP

1. Battery Installation and Charging

1. Ensure the flash unit is powered off.
2. Open the battery compartment cover on the Z880-N Speedlite.
3. Insert the 7.4V/2600mAh lithium battery, ensuring correct polarity.
4. Close the battery compartment cover securely.
5. To charge the battery, connect it to the provided USB charger. A full charge typically takes approximately 3.5 hours.

HIGH BATTERY POWER

The removable 2600mAh large capacity lithium battery can easily cope with long term shooting needs.



Approx. 480
Full Power Flashes



1.5s
Fast Recycling

CONVENIENT USB CHARGING

Providing you with safe battery charging equipment that can recharge your batteries in less time.



3.5H
Full Charge Time



Image: The Z880-N Speedlite showing the battery compartment and the battery being charged via a USB connection.

2. Mounting the Speedlite

1. Slide the Z880-N Speedlite onto your Nikon camera's hot shoe.
2. Secure the flash by rotating the locking ring or lever until it is firmly attached.

3. FC-16 Wireless Trigger Setup

The FC-16 trigger system consists of one transmitter and two receivers.

1. **Transmitter:** Mount the FC-16 transmitter onto your camera's hot shoe.
2. **Receivers:** Attach the FC-16 receivers to compatible studio strobes or speedlites. Ensure the channel and group settings on the transmitter and receivers match for proper communication.

OPERATING INSTRUCTIONS

1. Power On/Off and User Interface

Press and hold the power button to turn the Z880-N Speedlite on or off. The high-definition LCD screen provides an intuitive user interface for easy navigation and setting adjustments.

POWERFUL & ENHANCED UI

Z880-N has excellent instantaneous lighting performance and can simulate rich natural light.

Also equipped with a new screen with an intuitive UI for effortless control indoors and out.

GN GN60 (ISO100, 200mm)
High Guide Number

76Ws
Maximum Power

20-200mm
Zoom Range

1/180s-1/20000s
Flash Duration

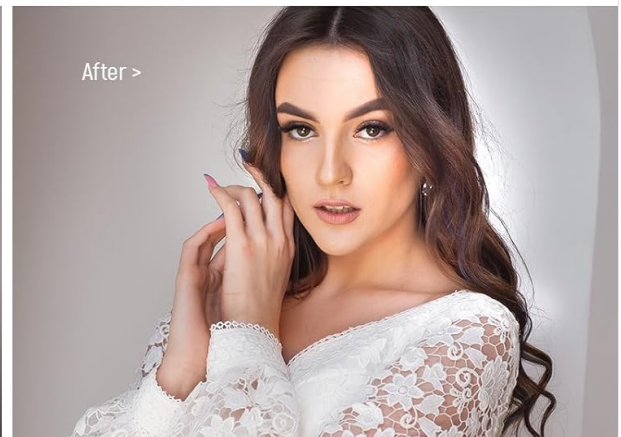
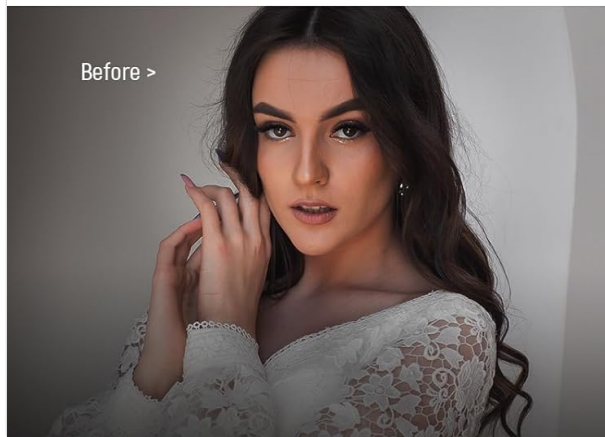


Image: The Z880-N Speedlite's enhanced user interface showing key settings and performance indicators.

2. Flash Modes

The Z880-N Speedlite offers multiple flash modes for various shooting scenarios:

- **TTL (Through-The-Lens) Auto Mode:** Automatically meters flash output for correct exposure. Supports ± 3 exposure compensation (19 levels).
- **M (Manual) Mode:** Allows manual adjustment of flash output from 1/256 to 1/1 (81 levels). Includes S1/S2 optical slave functions.
- **RPT (Repetitive Flash/Stroboscopic) Mode:** Enables up to 100 stroboscopic flashes at 199Hz for capturing multiple movements in a single frame.

TCM QUICK SWITCH

The i-TTL mode can meter light easily and efficiently. With the shortcut switch key, you can switch to M manual metering at any time for fine tuning based on automatic metering.



i-TTL Auto Mode	M Manual Mode
Automatic metering, easy to get started	Manual adjustment, flexible and professional
±3 Exposure Compensation	1/1-1/256 Flash Output S1/S2 Optical Slave
	

Image: The Z880-N Speedlite's display showing the TCM Quick Switch for transitioning between TTL and Manual modes, along with their respective settings.

RPT HIGH SPEED STROBE MODE

It has rich numerical manual adjustment processing, which can bring you creative multi frequency flash shooting effects.

1/1-1/256
Flash Output



100
Flash Times



199Hz
Flash Frequency



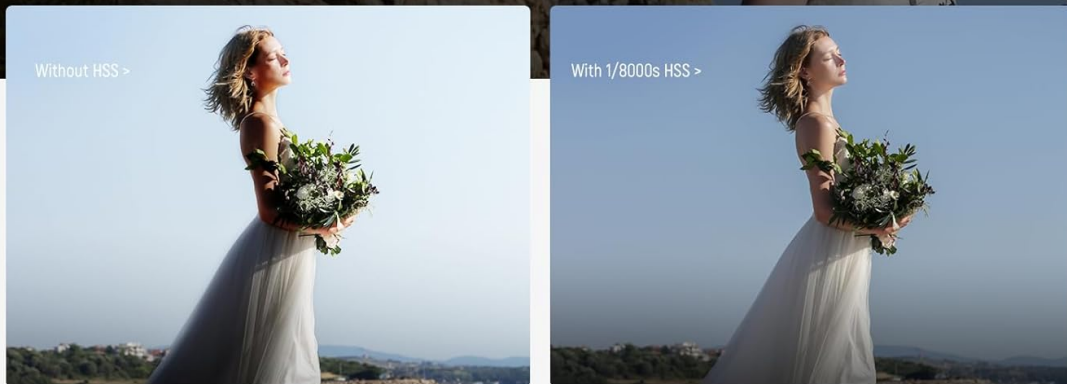
Image: The Z880-N Speedlite set to RPT (Repetitive Flash) mode, illustrating its capability to capture multiple exposures of a moving subject.

3. High-Speed Sync (HSS) and Curtain Sync

- **1/8000s HSS:** Allows synchronization with shutter speeds up to 1/8000s, useful for shooting with wide apertures in bright conditions.
- **Front/Rear Curtain Sync:** Provides creative control over motion blur effects by firing the flash at the beginning or end of the exposure.

1/8000s HIGH SPEED SYNC

When shooting outdoors under strong lighting or using a large aperture, turning on high speed sync can effectively avoid overexposure of the picture while providing a clear fill in light effect for the subject.



FRONT & REAR CURTAIN

Easily synchronize shooting with front and rear curtains, allowing you to unleash your creativity



Image: Visual examples demonstrating the effect of 1/8000s High-Speed Sync and the difference between front and rear curtain synchronization.

4. Built-in 2.4G Wireless Q System

The Z880-N Speedlite features an integrated NEEWER 2.4G Q System for wireless flash control. It supports:

- 4 Master Groups (A/B/C/D)
- 5 Slave Groups (A/B/C/D/E, D/E for QPro triggers)
- 32 Channels (1-32)
- 99 IDs (1-99)

It can function as a master or slave unit with other Q system flashes and allows wireless flash sync within 100m (without obstacles). Compatible with QPRO-C Trigger (sold separately) for advanced wireless control.

BUILT IN 2.4G NEEWER Q SYSTEM

4 Groups (TX)
M, A, B, C

328ft / 100m
Transmission Distance

CH1-CH32
ID 1-99

5 Groups (RX)
A, B, C, D, E

NOTE: Only the Z880-N Flash Speedlite is included.



Image: An illustration of the NEEWER 2.4G Q System, detailing its transmitter (TX) and receiver (RX) modes, group and channel settings, and compatibility with various NEEWER flash units.

5. FC-16 Wireless Trigger Functions

The FC-16 remote flash transmitter offers three primary functions:

- **Studio Strobe Flash Trigger:** Remotely triggers wireless synchronous studio strobe flashes (e.g., NEEWER S101-300W, S101-400W, Q300).
- **Speedlite Flash Trigger:** Functions as a wireless trigger for speedlite flashes.
- **Camera Shutter Release:** Can be used as a wireless camera shutter release.

WIRELESS FLASH CONTROL

Remotely trigger your DSLR camera, studio flash, or speedlight flash with ease



Compatible with
Nikon D7100 D7000 D5100 D5000 D3200 D3100 D600 D90 D800E
D800 D700 D300S D300 D200 D4 D3S D3X D2Xs etc



Compatible with
Fujifilm S5 S3 Pro

Image: The FC-16 wireless trigger mounted on a camera, demonstrating its ability to remotely control a studio flash and other lighting equipment.

3 IN 1 MULTI FUNCTIONAL FLASH TRIGGER



Can be used to trigger
Strobe Flash Light



Can be used as wireless trigger for
Speedlite Flash



Can be used as wireless
Camera Shutter Release

Image: A visual representation of the FC-16 trigger's versatile 3-in-1 functionality, showing its use as a trigger for strobe flashes, speedlites, and as a remote camera shutter release.

6. Modeling Lamp and Flash Head Adjustment

- **Modeling Lamp:** The powerful LED modeling lamp features 10 dimming levels for accurate flash preview.
- **Flash Head:** The flash head can tilt from -7° to 120° and rotate from 0° to 330° for flexible light bouncing and positioning.

MAINTENANCE

1. Battery Care

- Always use the provided charger for the 7.4V/2600mAh lithium battery.
- Avoid overcharging or completely draining the battery to prolong its lifespan.
- Store batteries in a cool, dry place when not in use.

2. Cleaning

- Use a soft, dry cloth to clean the exterior of the flash and trigger units.
- For stubborn dirt, a slightly damp cloth with mild soap can be used, followed by a dry cloth.
- Do not use strong solvents or abrasive cleaners.

- Keep the hot shoe contacts clean and free of debris.

3. Storage

- When not in use for extended periods, remove the battery from the flash unit.
- Store the flash and trigger in their protective cases in a dry, dust-free environment.

TROUBLESHOOTING

- **Flash Not Firing:** Check battery level, ensure flash is securely mounted, verify camera flash settings, and confirm wireless trigger connection if applicable.
- **Inconsistent Exposure:** Review flash mode settings (TTL/Manual), adjust exposure compensation, check for obstructions, and ensure flash head is correctly positioned.
- **Wireless Connection Issues:** Ensure transmitter and receiver channels/groups match. Check battery levels in both units. Reduce distance between units or clear line of sight.
- **Flash Overheating:** Allow the flash to cool down if the overheating warning appears. Avoid rapid, consecutive full-power flashes.

SPECIFICATIONS

Feature	Specification
Model Number	Z880-N
Brand	NEEWER
Compatible Mountings	Nikon
Camera Flash Type	Studio / Shoe Mount
Maximum Output	76Ws
Guide Number	GN60 (ISO100, 200mm)
Color Temperature	5600K±200K
Flash Duration	1/180s - 1/20000s
Recycling Time	1.5s
Focal Length	20-200mm (Auto/Manual)
Battery	7.4V/2600mAh Rechargeable Lithium
Full Power Flashes	Approx. 480
Flash Sync Speed	Up to 1/8000s (HSS)
Wireless System	NEEWER 2.4G Q System
Wireless Range	100m / 328' (without obstacles)
Included Components	FC-16 2.4G Wireless Camera Shutter Studio Flash Trigger with Two Receivers

WARRANTY AND SUPPORT

For warranty information and technical support, please refer to the official NEEWER website or contact their customer service directly. Keep your purchase receipt as proof of purchase for any warranty claims.