



Manuals.plus /

› [chalvh](#) /

› [Wireless Earbuds Bluetooth Headphones Wireless Earphones J66 User Manual](#)

chalvh J66

Wireless Earbuds J66 User Manual

Model: J66 | Brand: chalvh

INTRODUCTION

Thank you for choosing chalvh Wireless Earbuds J66. These Bluetooth headphones are engineered for exceptional listening experiences, offering crystal-clear sound and superior comfort. This manual provides essential information for setting up, operating, and maintaining your earbuds to ensure optimal performance.



Image: The chalh Wireless Earbuds J66, shown in their open charging case, highlighting the earbuds and the digital display on the case.

GETTING STARTED: SETUP

1. Charging Your Earbuds

Before first use, fully charge the earbuds and the charging case.

- Place the earbuds into the charging case, ensuring they are correctly seated.
- Connect the charging case to a USB power source using the provided charging cable.
- The LED indicator on the case will show charging status. A full charge is indicated when the display shows 100%.

2. Initial Pairing

Follow these steps to pair your earbuds with a Bluetooth-enabled device:

1. Ensure the earbuds are charged and inside the charging case.
2. Open the charging case. The earbuds will automatically enter pairing mode.
3. On your device (smartphone, tablet, etc.), enable Bluetooth.
4. Search for available Bluetooth devices and select "J66" from the list.
5. Once connected, a voice prompt will confirm successful pairing.

OPERATING INSTRUCTIONS

Touch Controls

The J66 earbuds feature intuitive touch controls for easy operation:

Action	Left Earbud	Right Earbud
Play/Pause	Single tap	Single tap
Next Track	Double tap	Double tap
Previous Track	Triple tap	Triple tap
Answer/End Call	Single tap	Single tap
Reject Call	Long press (2s)	Long press (2s)
Activate Voice Assistant	Long press (3s)	Long press (3s)

Wearing Your Earbuds

Gently insert the earbuds into your ears and rotate them slightly to find a comfortable and secure fit. Proper fit ensures optimal sound quality and noise isolation.



Image: A woman exercising, wearing the chalh earbuds, demonstrating their secure fit during physical activity.

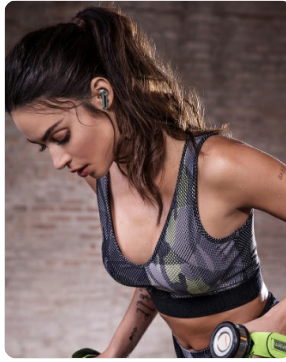


Image: A woman relaxing indoors, reading a book and drinking coffee, while wearing the chalh earbuds, illustrating comfort for leisure.



Image: A man running outdoors, wearing the chalh earbuds, showcasing their suitability for active lifestyles.

CARE AND MAINTENANCE

To ensure the longevity and optimal performance of your chalh J66 earbuds, follow these maintenance guidelines:

- **Cleaning:** Regularly clean the earbuds and charging case with a soft, dry, lint-free cloth. Do not use harsh chemicals or abrasive materials.
- **Ear Tips:** Remove ear tips and clean them with mild soap and water if necessary. Ensure they are completely dry before reattaching.
- **Charging Ports:** Keep the charging contacts on the earbuds and inside the case clean and free of debris. Use a dry cotton swab if needed.
- **Storage:** When not in use, store the earbuds in their charging case to protect them from dust and damage.
- **Avoid Moisture:** While the earbuds may be resistant to splashes, avoid submerging them in water or exposing them to excessive moisture.
- **Temperature:** Do not expose the earbuds to extreme temperatures (hot or cold) as this can affect battery life and internal components.

TROUBLESHOOTING GUIDE

If you encounter issues with your earbuds, refer to the following common problems and solutions:

Problem	Possible Cause	Solution
Earbuds not pairing	Low battery, out of range, not in pairing mode, previous connection issue.	Ensure earbuds are charged. Place them back in the case and open the lid to re-enter pairing mode. Turn Bluetooth off/on on your device. Forget "J66" from your device's Bluetooth list and re-pair.
No sound from one earbud	Low battery, connection issue, earbud not properly seated.	Ensure both earbuds are charged. Place both earbuds back in the case, close the lid, wait a few seconds, then open again. Re-pair if necessary.
Poor sound quality	Earbuds not properly seated, dirty ear tips, interference, low battery.	Adjust earbud position for a secure fit. Clean ear tips and earbud grilles. Move away from sources of interference. Charge earbuds.
Charging case not charging	Faulty cable/adaptor, dirty charging port.	Try a different USB cable and power adapter. Clean the charging port on the case.
Touch controls unresponsive	Temporary software glitch, dirty touch sensor.	Place earbuds back in the case, close and open the lid. Ensure touch sensors are clean and dry.

PRODUCT SPECIFICATIONS

Key technical specifications for the chalh Wireless Earbuds J66:

Feature	Detail
Brand	chalvh
Model	J66
Wireless Communication Technology	Bluetooth
Form Factor	In Ear
Material Type	Plastic
Batteries	1 Lithium Ion battery required (included)
Special Features	Lightweight
Included Components	Cable
Parcel Dimensions	7 x 6 x 2 cm; 5 g

WARRANTY AND CUSTOMER SUPPORT

Your chalh Wireless Earbuds J66 come with a **3-year warranty**, ensuring peace of mind regarding manufacturing defects and performance issues under normal use. We are committed to providing high-quality products and excellent customer service.

For any inquiries, technical support, or warranty claims, please contact our customer service team. We offer 24-hour customer service support to assist you promptly.



Image: Icons representing 3 Years Warranty, 24H Customer Service Support, and Climate Pledge Friendly initiatives.

Please refer to your purchase documentation or the official chalh website for specific contact details and the full warranty policy.