

[Manuals.plus](#) /

› [Ansody](#) /

› Ansody S7 3000A Peak Car Jump Starter User Manual

## Ansody S7

# Ansody S7 3000A Peak Car Jump Starter User Manual

Model: S7 | Brand: Ansody

## 1. INTRODUCTION

---

This manual provides essential instructions for the safe and effective operation of your Ansody S7 3000A Peak Car Jump Starter. Please read thoroughly before use and retain for future reference.

### Package Contents:

- Ansody S7 Jump Starter Unit
- Smart Jumper Cable
- USB Cable (Type-C)
- Storage Bag
- User Manual



Figure 1: Ansoody S7 Jump Starter unit, smart jumper cables, USB-C charging cable, and storage bag.

## 2. SAFETY INFORMATION

- Read all instructions before using the product.
- Do not incinerate, disassemble, or use in high temperatures.
- Do not charge except on the specified charging condition.
- Do not operate this jump starter while charging is in progress.
- Always use in a well-ventilated area, with some eye protection.
- Keep away from children.
- Ensure correct polarity connection to avoid damage to the unit or vehicle.
- If the jump leads are not long enough for your passenger car battery, clamp the positive pole on the positive terminal of the car battery, and the negative pole can be clamped on the iron sheet of the car, not necessarily on the negative pole of the battery.

# QUICK-CHARGING ALL USB DEVICES



Figure 2: The Ansoady S7 features multiple safety protections including over-charge, short circuit, reverse polarity, low/high temperature, over-voltage, over-load, reverse charge, over-current, and spark-proof protection.

### 3. PRODUCT OVERVIEW

Familiarize yourself with the components of your Ansoady S7 Jump Starter:

- **Power Button:** Activates the unit and checks battery level.
- **Display:** Shows battery charge percentage and output status.
- **12V Jumper Cable Port:** Connects the smart jumper cables.
- **USB-C (5V/2.4A Input):** For charging the jump starter unit.
- **USB-A (5V/2.4A Output):** For charging external devices.

- **LED Flashlight:** Provides illumination with multiple modes.

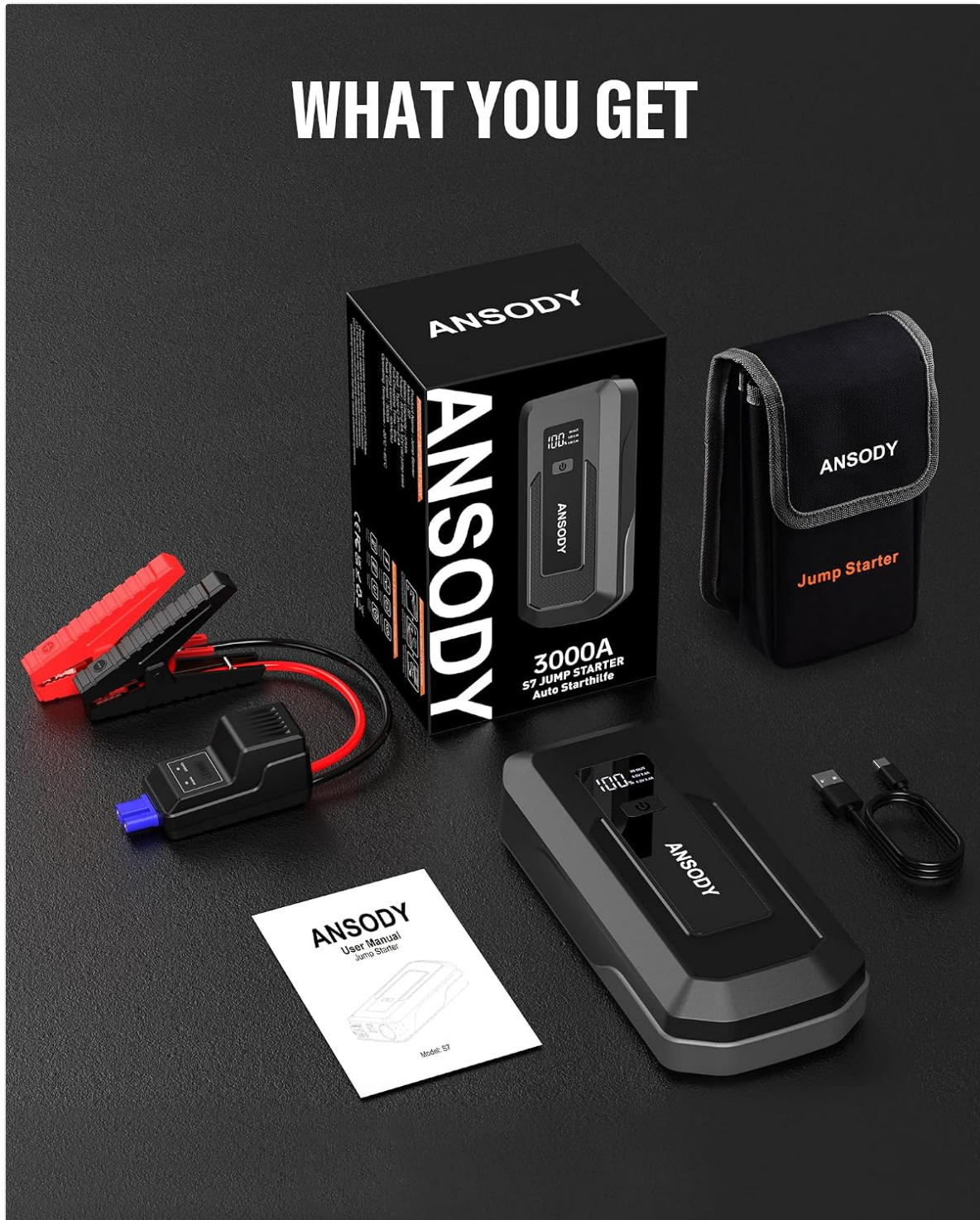


Figure 3: Detailed view of the Ansody S7 Jump Starter's ports and controls.

## 4. SETUP

### Charging the Jump Starter:

Before first use, fully charge the Ansody S7 unit. It is recommended to keep the unit charged above 50% for optimal performance and longevity.

1. Connect the provided USB-C cable to the USB-C input port on the jump starter.
2. Connect the other end of the USB-C cable to a compatible USB wall charger (not included) or car

charger (not included).

3. The display will show the charging progress. The unit is fully charged when the display shows 100%.
4. A full charge typically takes approximately 5 hours.

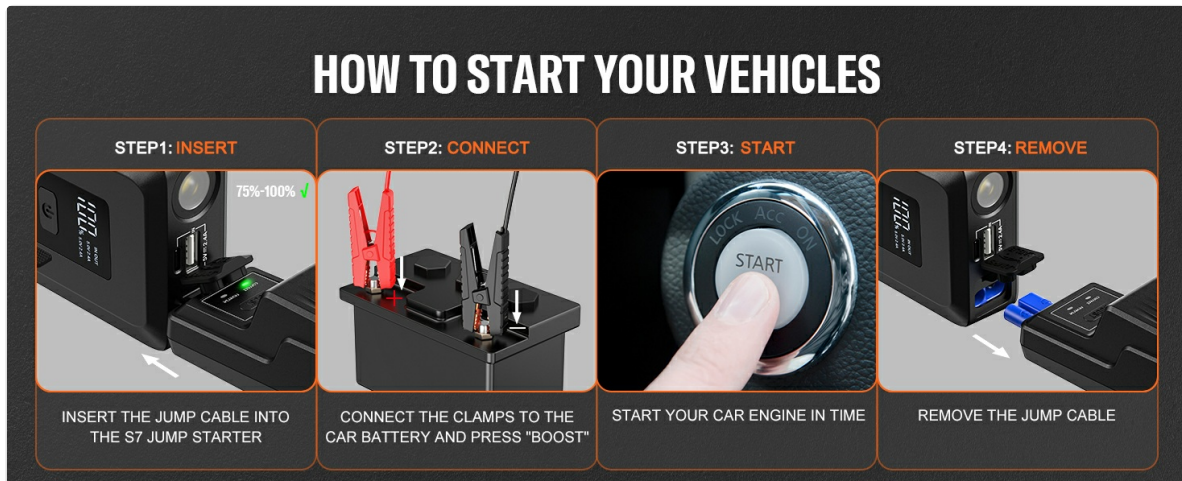


Figure 4: Charging the Ansody S7 unit using a USB-C cable and a wall charger.

## 5. OPERATING INSTRUCTIONS

### Jump Starting a Vehicle:

The Ansody S7 is designed to jump start 12V vehicles with up to 10.0L gasoline engines or 8.0L diesel engines.

1. Ensure the jump starter is sufficiently charged (75-100% recommended).
2. Insert the blue end of the Smart Jumper Cable into the 12V Jumper Cable port on the Ansody S7 unit.
3. Connect the red clamp to the positive (+) terminal of the vehicle's battery and the black clamp to the negative (-) terminal. If the negative terminal is inaccessible, connect the black clamp to a solid, unpainted metal part of the vehicle's chassis.
4. Observe the indicator light on the Smart Jumper Cable. A solid green light indicates a correct connection and readiness to jump start. If the vehicle battery is extremely low or dead, press the "BOOST" button on the Smart Jumper Cable and wait for 30 seconds until the green light comes on.
5. Start your car engine within 30 seconds of the green light appearing.
6. Once the engine starts, immediately remove the jumper cables from the vehicle battery, then disconnect them from the Ansody S7 unit.

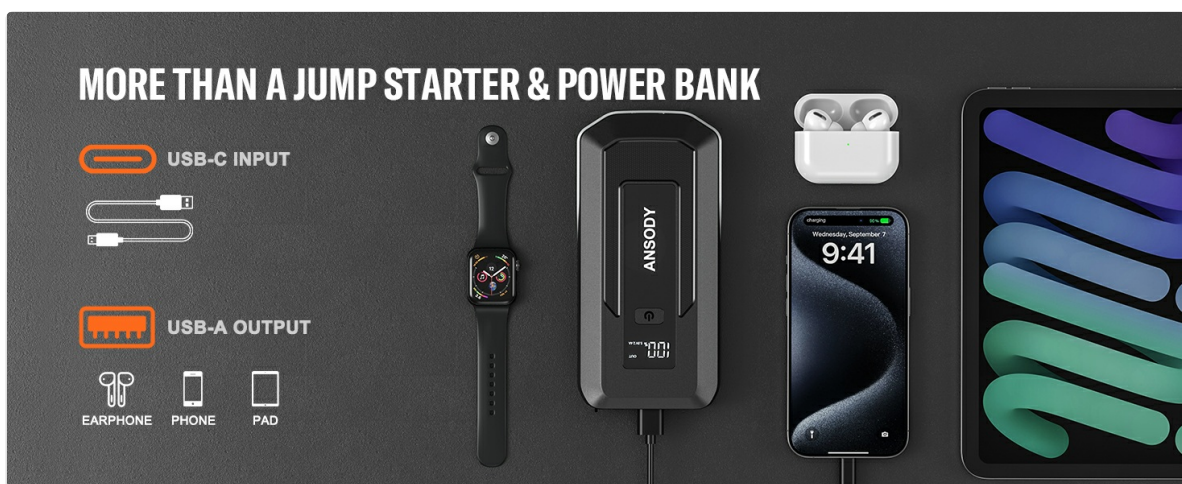


Figure 5: Visual guide for connecting the Ansody S7 to a vehicle battery and initiating a jump start.

Your browser does not support the video tag.

Video 1: A short demonstration of the Ansody S7 3000A Jump Starter in action, highlighting its compact size and ease of use for starting a vehicle.

### Using as a Power Bank:

The Ansody S7 can charge various USB-powered devices.

- Connect your device's USB charging cable to the USB-A output port (5V/2.4A) on the jump starter.
- The jump starter will automatically begin charging your device.



Figure 6: The Ansody S7 unit can be used as a portable power bank to charge smartphones, smartwatches, and other USB devices.

### Using the LED Flashlight:

The integrated LED flashlight offers three lighting modes.

1. Press and hold the Power Button for 3 seconds to turn on the flashlight (steady light mode).
2. Press the Power Button again to switch to SOS mode (slow flashing).
3. Press the Power Button a third time to switch to Strobe mode (fast flashing).
4. Press and hold the Power Button for 3 seconds to turn off the flashlight.



Figure 7: The Ansoy S7 features an 85-hour LED flashlight with flashlight, SOS, and strobe modes for various situations.

## 6. MAINTENANCE

- Store the jump starter in its provided storage bag in a cool, dry place.

- Recharge the unit every 3-6 months, even if not used, to maintain battery health.
- Clean the unit with a dry, soft cloth. Do not use harsh chemicals or abrasive materials.

## 7. TROUBLESHOOTING

### Common Issues:

- **Unit not turning on:** Ensure the unit is charged.
- **Vehicle not starting:**
  - Check that the Smart Jumper Cable is securely connected to both the jump starter and the vehicle battery terminals.
  - Verify correct polarity (red to positive, black to negative/chassis).
  - If the vehicle battery is completely dead, use the "BOOST" function on the Smart Jumper Cable.
  - Ensure the jump starter has sufficient charge.
- **Indicator light on Smart Jumper Cable shows an error:** Refer to the quick guide on the cable for specific error indications (e.g., reversed polarity, low voltage, short circuit, over-temp protection). Correct the issue before attempting to jump start.

## 8. SPECIFICATIONS

<b>Brand</b>	Ansody
<b>Model</b>	S7
<b>Peak Output Current</b>	3000 Amps
<b>Engine Compatibility</b>	Up to 10.0L Gas or 8.0L Diesel
<b>Voltage</b>	12 Volts
<b>Battery Cell Composition</b>	Lithium Polymer
<b>Product Dimensions</b>	6.94"D x 3.33"W x 1.37"H
<b>Item Weight</b>	0.42 Kilograms (14.8 ounces)
<b>Safety Rating</b>	UL2743, CE, UKCA, CNAS, FC
<b>Operating Temperature</b>	-20°C to 60°C (-4°F to 140°F)

## 9. WARRANTY & SUPPORT

Ansody provides industry-leading 24-Month Ansody Care and lifetime technical support for your S7 Jump

**Starter.**

For any inquiries or assistance, please do not hesitate to contact Ansody customer service, available 24 hours a day, seven days a week.

Please refer to the contact information provided in your product packaging or on the official Ansody website for support details.