

## Manuals+

[Q & A](#) | [Deep Search](#) | [Upload](#)

[manuals.plus](#) /

- › [Lucyd](#) /
- › [Lucyd Lyte \(2025 Version\) Smart Glasses User Manual](#)

## Lucyd LCD006-15

# Lucyd Lyte (2025 Version) Smart Glasses User Manual

Model: LCD006-15

## INTRODUCTION

Welcome to the user manual for your Lucyd Lyte (2025 Version) Smart Glasses. These innovative smart eyewear combine classic design with advanced technology, featuring Bluetooth connectivity, open-ear speakers, a microphone, and light-adaptive photochromic lenses. This manual provides essential information for setting up, operating, maintaining, and troubleshooting your device to ensure optimal performance and longevity.



Image: Lucyd Lyte Smart Glasses, showcasing the blend of classic eyewear design with integrated smart technology.

## SETUP

### 1. Unboxing and Package Contents

Upon opening your Lucyd Lyte Smart Glasses package, verify that all components are present. The standard package includes:

- Lucyd Audio Glasses
- Slip Case
- Cleaning Cloth
- User Manual (this document)



Image: A pair of Lucyd Lyte Smart Glasses, Darkside model, viewed from an angle, highlighting the sleek design.

## 2. Charging the Glasses

Before first use, fully charge your Lucyd Lyte Smart Glasses. The glasses are equipped with 2 Lithium Ion batteries (included).

1. Locate the charging port on the glasses.
2. Connect the provided charging cable to the glasses and a compatible USB power source.
3. The charging indicator light will illuminate. Once fully charged, the light will change or turn off, indicating the process is complete.

A full charge provides approximately 12 hours of music/talk time.



### **ALL DAY CONNECTION**

12h of music/talk time per charge  
rechargeable li-ion battery.

Image: Graphic illustrating "All Day Connection" with a battery icon, indicating long battery life for music and talk time.

## 3. Bluetooth Pairing

To connect your Lucyd Lyte Smart Glasses to your smartphone or other Bluetooth-enabled device:

1. Ensure the glasses are charged and powered on.
2. Activate Bluetooth on your device.
3. Put the Lucyd Lyte glasses into pairing mode (refer to the Quick Start Guide for specific button presses, usually a long press on a control button).
4. On your device, search for available Bluetooth devices and select "Lucyd Lyte" from the list.
5. Once connected, you will hear an audio confirmation or see an indicator light change on the glasses.

## OPERATING INSTRUCTIONS

### 1. Audio Playback and Calls

Your Lucyd Lyte Smart Glasses feature open-ear speakers for immersive sound and situational awareness, along with an integrated microphone for hands-free communication.

- **Music Playback:** Once paired, audio from your device will stream directly to the glasses. Use your device's controls or the glasses' integrated controls (if available, refer to Quick Start Guide) to play, pause, skip tracks, and adjust volume.
- **Making/Receiving Calls:** When a call comes in, you can answer or decline using the glasses' controls. The integrated microphone ensures clear voice transmission during calls.



### IMMERSIVE SOUND

With 4 powerful open-ear speakers for situational awareness.



Image: Graphic "Immersive Sound" with a speaker icon, emphasizing the four powerful open-ear speakers for situational awareness.

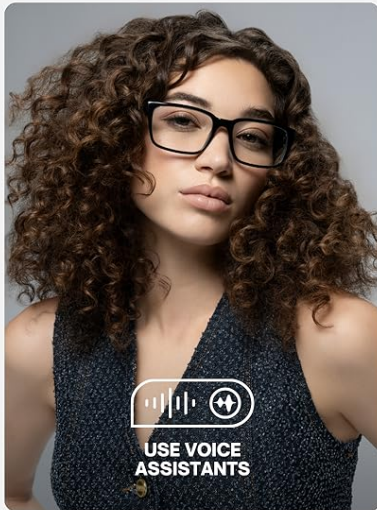


Image: A composite image showing three key functions: playing music, taking hands-free calls, and using voice assistants with the smart glasses.



## 2. Photochromic Lenses

The Lucyd Lyte Smart Glasses feature photochromic lenses that automatically adapt to changing light conditions.

- **Indoor Use:** Indoors or in low light, the lenses remain clear, providing optimal vision.
- **Outdoor Use:** When exposed to UV light (sunlight), the lenses will darken, providing sun protection similar to sunglasses. The Darkside photochromic lenses tint black in sunlight and offer anti-reflective and UV400 protection.



Image: A side-by-side comparison showing a person wearing the smart glasses indoors with clear lenses and outdoors with tinted lenses, demonstrating the photochromic functionality.

## 3. AI-Powered Features and Voice Control

The Lucyd Lyte Smart Glasses integrate AI-powered features, including voice control, allowing you to interact with your device and access information hands-free.

- **Voice Assistant:** Activate your device's voice assistant (e.g., Siri) directly through the glasses to make calls, send messages, get directions, or control music.
- **ChatGPT Integration:** Connect to ChatGPT instantly using the AI features for quick answers and information retrieval.



## AI-POWERED FEATURES

Connect to ChatGPT in an instant with our AI features.



Image: Graphic highlighting "AI-Powered Features" with the ChatGPT logo, indicating instant connection to AI capabilities.

## MAINTENANCE

### 1. Cleaning Your Glasses

To maintain the clarity of your lenses and the overall appearance of your glasses:

- Use the provided cleaning cloth to gently wipe the lenses and frame.
- For stubborn smudges, lightly dampen the cloth with a lens cleaning solution specifically designed for eyewear.
- Avoid using abrasive materials, paper towels, or harsh chemicals, as these can scratch the lenses or damage the frame.

### 2. Storage

When not in use, store your Lucyd Lyte Smart Glasses in the provided slip case to protect them from dust, scratches, and accidental damage. Avoid leaving them in direct sunlight or extreme temperatures.

### 3. Battery Care

To maximize battery life and performance:

- Avoid fully discharging the battery frequently.
- Charge the glasses regularly, even if not used daily.
- Do not expose the glasses to extreme heat or cold, as this can degrade battery performance.

## TROUBLESHOOTING

If you encounter issues with your Lucyd Lyte Smart Glasses, refer to the following common troubleshooting steps:

Problem	Possible Cause	Solution
Cannot connect via Bluetooth	Glasses not in pairing mode, out of range, or low battery.	Ensure glasses are charged and in pairing mode. Move closer to the device. Restart both devices.
No sound or low volume	Volume too low on glasses or connected device, or not properly paired.	Increase volume on both glasses and connected device. Re-pair the devices.
Lenses not tinting/clearing properly	Insufficient UV exposure (for tinting) or prolonged UV exposure (for clearing), or extreme temperatures.	Ensure adequate UV light for tinting. Allow time for lenses to adjust. Avoid extreme temperatures.

Problem	Possible Cause	Solution
Battery not holding charge	Aging battery or improper charging.	Ensure using the correct charging cable and power source. If issues persist, contact Lucyd support.

SPECIFICATIONS

Feature	Detail
Model Name	Darkside v2
Item Model Number	LCD006-15
Brand	Lucyd
Product Dimensions	5.43 x 2.36 x 5.31 inches
Item Weight	11.7 ounces (0.33 Kilograms)
Batteries	2 Lithium Ion batteries (included)
Battery Capacity	181.1 Milliamp Hours
Connectivity Technology	Bluetooth
Wireless Communication Standard	Bluetooth
Special Feature	Voice Control
Operating System	Proprietary (Lucyd)
Lens Type	Photochromic (Darkside: tints black in sunlight, anti-reflective, UV400)
Frame Material	TR90 (Adjustable & Durable)
Hinges	Spring Hinges for better fit



Image: Diagram highlighting key features of the Lucyd Lyte Smart Glasses, including photochromic lenses, open-air audio, voice assistance, all-day connection, and AI-powered features.





Image: A woman wearing Lucyd Lyte Smart Glasses, with text indicating TR90 material for adjustable and durable frames.





Image: A man wearing Lucyd Lyte Smart Glasses, with text indicating spring hinges for a better fit.




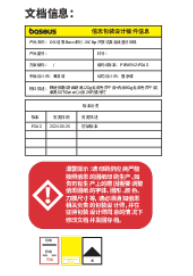
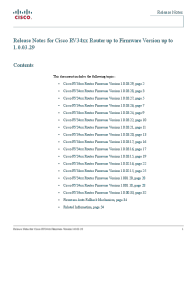

## WARRANTY AND SUPPORT

For warranty information and customer support, please contact Lucyd directly. You can visit the official Lucyd store on Amazon for more details and contact options: [Lucyd Store](#).

While this manual does not detail specific warranty terms, Lucyd is the manufacturer and can provide comprehensive support for your product.

© 2025 Lucyd. All rights reserved.

This manual is for informational purposes only. Specifications are subject to change without notice.

	<p><a href="#">LucyD Lyte Smartglasses User Manual - Features, Controls, and Setup</a></p> <p>Comprehensive user manual for LucyD Lyte smartglasses, covering setup, features, touch controls, voice commands, app integration, and regulatory information.</p>
	<p><a href="#">Oxygen Forensic Detective Release Notes</a></p> <p>Detailed release notes for Oxygen Forensic Detective, outlining new features, improvements, and bug fixes across various versions, focusing on mobile device data extraction and analysis.</p>
	<p><a href="#">Sound Pro NDS-1518D 15" Dual Portable Speakers with Bluetooth &amp; TWS - Instruction Manual</a></p> <p>Comprehensive instruction manual for the Sound Pro NDS-1518D 15-inch dual portable speakers. Covers safety guidelines, control panel operation, remote control functions, Bluetooth pairing, TWS setup, display settings, battery information, technical specifications, FCC compliance, and support contact details.</p>
	<p><a href="#">Baseus Bass 15 Clip Open-Ear TWS Earbuds Quick Start Guide</a></p> <p>A quick start guide for the Baseus Bass 15 Clip Open-Ear TWS Earbuds, detailing features, pairing, app usage, music mode, call mode, charging, and specifications.</p>
	<p><a href="#">Cisco RV34xx Router Firmware Release Notes</a></p> <p>This document provides release notes for Cisco RV34xx routers, detailing resolved and known issues across various firmware versions from 1.0.00.33 up to 1.0.03.29. It includes information on new features, bug fixes, and important notes for upgrading and downgrading firmware.</p>
	<p><a href="#">Inuvet Otex &amp; Otytan: Pet Ear Care and Skin Regeneration Products</a></p> <p>Discover Inuvet's Otex ear cleaner and Otytan skin care for pets. Learn about natural ingredients, benefits for ear hygiene, and skin regeneration, especially for ear folds. Available exclusively at veterinary clinics.</p>



## [\[pdf\]](#) Accessories Catalog

GenericCatalog 01 25 web WHOLESALE CATALOG LUCYD AUDIO EYEWEAR drive google file d  
1QBnbGp1CcCpZpxp9T7SybigiMuHmBIBQ view usp link |||

LUCYD FRAME TECH Meet the first smart eyewear with an uncompromising focus  
on optical quality. All ... sses. Luxury smart frames with upgraded accessories. 2024  
Innovative Eyewear, Inc. 3 DARKSIDE **LCD006-15** ICONIC STYLE SPRING HINGES  
Better Fit TR90 Adjustable Durable PHOTOCROMIC LENSES STAND...

lang:en score:30 filesize: 9.3 M page\_count: 44 document date: 2025-02-06