

ZVOX AV455

ZVOX AccuVoice AV455 Sound Bar User Manual

Model: AV455 | Brand: ZVOX

INTRODUCTION

The ZVOX AccuVoice AV455 Dialogue Clarifying Sound Bar is designed to enhance your television audio experience, particularly by clarifying dialogue and providing immersive sound. It integrates advanced hearing aid technology to separate and boost voices, making conversations easier to understand, even at lower volumes. This manual provides detailed instructions for setting up, operating, maintaining, and troubleshooting your AV455 sound bar.



Image: The ZVOX AccuVoice AV455 Sound Bar with its remote control, showcasing its sleek black design.

WHAT'S IN THE BOX

Upon unpacking your ZVOX AccuVoice AV455 Sound Bar, please ensure all the following components are present:

- ZVOX AccuVoice AV455 Sound Bar
- Remote Control (2x AAA batteries included)
- ARC-HDMI cable
- Optical digital cable
- Analog to 3.5mm cable
- Power Adapter

EASY TO OPERATE

A behind-the-grille display illuminates when you make adjustments to sound settings.



The large print remote makes it easy for the whole family to use.

Image: All components included in the ZVOX AV455 Sound Bar package, laid out for easy identification.

SETUP

The ZVOX AV455 offers simple one-cord setup options to connect to your television. Choose the connection method that best suits your TV's available ports.

Connection Options:

- **HDMI-ARC:** For effortless setup, connect the included HDMI cable from the AV455's HDMI-ARC port to your TV's HDMI-ARC port. This allows you to control power, volume, and mute with your existing TV remote.
- **Optical Digital:** Connect the included optical digital cable from the AV455's optical input to your TV's optical output.
- **Analog:** Use the included analog to 3.5mm cable to connect the AV455's analog input to your TV's audio output (headphone jack or RCA outputs with an adapter, not included).

After connecting the audio cable, plug the power adapter into the sound bar and then into a wall outlet. The large, easy-to-read display will assist with navigation during setup.

HEAR EVERY WORD WITH ACCUVOICE®

Lift TV dialogue out of the background for enhanced vocal clarity—even at low volumes.



Image: Visual representation of the three easy ways to connect the sound bar: Optical Digital (TOSLINK), Analog (3.5mm Headphone Jack), and HDMI-ARC.



Image: The ZVOX AV455 Sound Bar positioned below a television, demonstrating its compact size and integration into a home entertainment setup.

OPERATING INSTRUCTIONS

The ZVOX AV455 is designed for user-friendly operation. Use the included remote control to access its features.

Power On/Off:

Press the **POWER** button on the remote to turn the sound bar on or off. If connected via HDMI-ARC, your TV remote may also control the power.

Input Selection:

Press the **INPUT** button to cycle through available audio inputs (HDMI-ARC, Optical, Analog).

AccuVoice Dialogue Clarification:

Activate and adjust the patented AccuVoice technology to enhance vocal clarity. There are five AccuVoice settings to fine-tune dialogue. Press the **ACCUVOICE** button to cycle through the levels (AC 1 to AC 5). Higher levels provide greater dialogue boost.



Clarify Voices
on your TV

AV455

DIALOGUE CLARIFYING SOUNDBAR

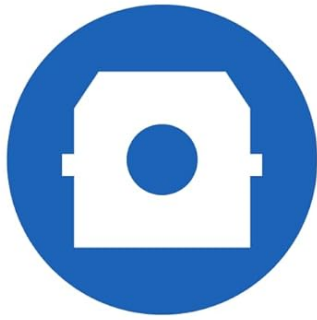
Image: A visual representation of how AccuVoice technology lifts TV dialogue from background noise, with an indicator for 5 levels of dialogue boost.

PhaseCue Virtual Surround Sound:

Experience immersive 3D sound from the compact sound bar using PhaseCue virtual surround technology. Press the **SURROUND** button to adjust the surround sound effect (SD 1 to SD 3).

THREE EASY WAYS TO CONNECT

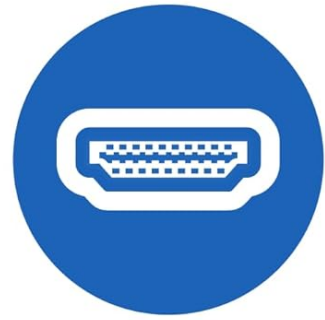
This product features optical, analog, and HDMI inputs. It cannot be used as a center speaker. Check your TV for compatibility.



**OPTICAL DIGITAL
INPUT**
(Toslink)



**ANALOG
INPUT**
(Headphone Jack,
3.5mm)



**HDMI-ARC
INPUT**
(Compatible)

Control the ZVOX AV455 with your TV remote using the HDMI-ARC connection.

Image: The ZVOX AV455 Sound Bar mounted on a wall below a TV, illustrating its ability to deliver room-enveloping sound with PhaseCue technology.

Volume Control and Output Leveling:

Adjust the volume using the **VOLUME UP** and **VOLUME DOWN** buttons. The Output Leveling feature automatically reduces the impact of loud commercials, providing consistent audio levels.

Bluetooth Wireless Streaming:

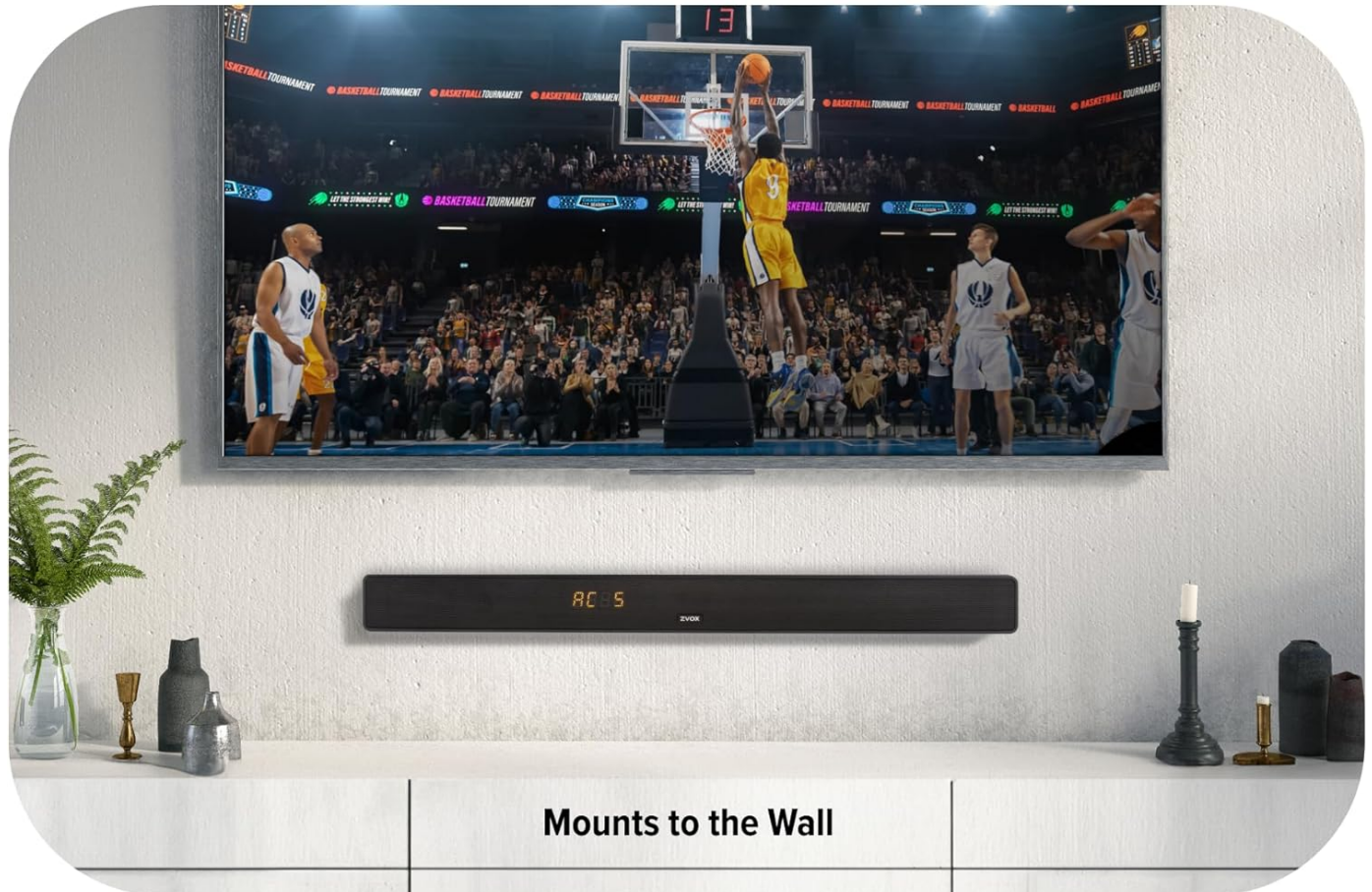
The AV455 supports wireless audio streaming via Bluetooth. Pair your smartphone, tablet, laptop, or Bluetooth-capable TV to the sound bar to enjoy music and other audio content.

USB Playback:

Plug a USB flash drive into the AV455's USB port to play audio tracks directly from your device.

ROOM-ENVELOPING SOUND WITH PHASECUE®

Rich and immersive 3D sound that Sound & Vision magazine calls “remarkably ingenious”.



Mounts to the Wall

Image: The ZVOX AV455 Sound Bar with its remote control, showing the illuminated display behind the grille when adjustments are made, emphasizing ease of operation.

MAINTENANCE

To ensure the longevity and optimal performance of your ZVOX AV455 Sound Bar, follow these simple maintenance guidelines:

- **Cleaning:** Use a soft, dry cloth to clean the exterior of the sound bar. Do not use liquid cleaners or aerosol sprays, as they may damage the finish or internal components.
- **Ventilation:** Ensure the sound bar has adequate ventilation. Do not block any ventilation openings.
- **Placement:** Avoid placing the sound bar in direct sunlight, near heat sources, or in areas with high humidity.

TROUBLESHOOTING

If you encounter any issues with your ZVOX AV455 Sound Bar, please refer to the following common troubleshooting steps:

- **No Sound:**

- Verify that the sound bar is powered on.
- Check that the correct input source is selected on the sound bar.
- Ensure all cables (audio and power) are securely connected.
- Confirm that your TV's audio output is set to the correct external speaker option.

- **Remote Control Not Responding:**

- Check and replace the batteries in the remote control.
- Ensure there are no obstructions between the remote and the sound bar.

- **Dialogue Not Clear Enough:**

- Increase the AccuVoice level using the **ACCUVOICE** button on the remote.
- Adjust the TV's internal audio settings, if applicable, to ensure optimal output to the sound bar.

For persistent issues, please refer to the ZVOX support website or contact customer service.

SPECIFICATIONS

Model Name	AV455
Speaker Type	Soundbar
Special Feature	Sound Bar For Dialogue, Sound Bar For Hearing Impaired, TV Soundbar For Hearing Impaired, Clear Voice Soundbar
Compatible Devices	Television
Controller Type	Remote Control
Surround Sound Channel Configuration	2.1 or 3.1
Color	Black
Product Dimensions	3.25"D x 24"W x 2.2"H
Item Weight	4.8 Pounds
Wireless Communication Technology	Bluetooth
Power Source	Corded Electric
Connectivity Technology	Analog, Optical, ARC-HDMI
Audio Output Mode	Surround
Mounting Type	Wall Mount

WARRANTY AND SUPPORT

The ZVOX AccuVoice AV455 Sound Bar comes with a **Limited Warranty**. For specific details regarding warranty coverage, duration, and terms, please refer to the warranty information included in your product packaging or visit the

official ZVOX website.

For technical support, product registration, or any other inquiries, please contact ZVOX customer service through their official channels. Keep your purchase receipt and product serial number handy for faster service.

Documents - ZVOX – AV455



[\[pdf\]](#) User Manual Instructions

ZVOX AV455 M User Manual Audio 48349828928 support zvox helpdesk attachments |||

ZVOX AccuVoice TV Speaker MODEL **AV455** SETUP OPERATION www.zvox.com

READ THIS FIRST Important Safety Instructions For ZVOX Audio System WARNING TO PREVENT FIRE OR SHOCK HAZARD, DO NOT EXPOSE THIS APPLIANCE TO RAIN OR MOISTURE. THIS APPLIANCE SHALL NOT BE EXPOSED TO DRIPPING OR SPLASHING WATER A...

lang:en **score:53** filesize: 1017.49 K page_count: 11 document date: 2024-03-23



[\[pdf\]](#) User Manual Instructions

User manual ZVOX Audio LLC AV455 ACCUVOICE TV SPEAKER 2A3BP 2A3BPAV455 av455

ZVOX AccuVoice TV Speaker MODEL **AV455** SETUP OPERATION www.zvox.com

READ THIS FIRST Important Safety Instructions For ZVOX Audio System WARNING TO PREVENT FIRE OR SHOCK HAZARD, DO NOT EXPOSE THIS APPLIANCE TO RAIN OR MOISTURE. THIS APPLIANCE SHALL NOT BE EXPOSED TO DRIPPING OR SPLASHING WATER A...

lang:en **score:49** filesize: 794.04 K page_count: 9 document date: 2022-07-15



[\[pdf\]](#) Label

AV455 00 XXXXX MP ID label and location ZVOX Audio LLC ACCUVOICE TV SPEAKER 2A3BP 2A3BPAV455 av455

AV455 AccuVoice TV Speaker Model **AV455** ZVOX Audio LLC Swampscott MA

Input:15V 2A FCC ID: 2A3BP-**AV455** IC: 10550A-**AV455** CAN ICES-3 B / NMB-3 B

This device complies with Part 15 of the FCC Rules. Operation is subject to the following two conditions: 1 this device may not cause harmful interfer...

lang:en **score:36** filesize: 1004.12 K page_count: 2 document date: 2022-07-28

C5266091_X10_56.1

ZVOX Audio, LLC

Office of Engineering Technology
Federal Communications Commission
7435 Oakland Mills Road
Columbia, MD 21046

Subject: Request for Confidentiality
FCC ID: 2A3BP-AV455

Date: May 30, 2022

To Whom It May Concern,

Pursuant to the provisions of Sections 0.457 and 0.459 of Commission's rules (47CFR 0.457, 0.459), we are requesting the Commission to withhold the following attachment(s) as confidential document from public disclosure.

Exhibit	Long Term Confidentiality	Short Term Confidentiality
1) Label Location	No	No
2) Declaration Statement	No	No
3) Declaration Statement	No	No
4) Declaration Statement	No	No
5) Declaration Statement	No	No
6) Declaration Statement	No	No
7) Declaration Statement	No	No
8) Declaration Statement	No	No
9) Declaration Statement	No	No
10) Declaration Statement	No	No
11) Declaration Statement	No	No
12) Declaration Statement	No	No
13) Declaration Statement	No	No
14) Declaration Statement	No	No
15) Declaration Statement	No	No
16) Declaration Statement	No	No
17) Declaration Statement	No	No
18) Declaration Statement	No	No
19) Declaration Statement	No	No
20) Declaration Statement	No	No
21) Declaration Statement	No	No
22) Declaration Statement	No	No
23) Declaration Statement	No	No
24) Declaration Statement	No	No
25) Declaration Statement	No	No
26) Declaration Statement	No	No
27) Declaration Statement	No	No
28) Declaration Statement	No	No
29) Declaration Statement	No	No
30) Declaration Statement	No	No
31) Declaration Statement	No	No
32) Declaration Statement	No	No
33) Declaration Statement	No	No
34) Declaration Statement	No	No
35) Declaration Statement	No	No
36) Declaration Statement	No	No
37) Declaration Statement	No	No
38) Declaration Statement	No	No
39) Declaration Statement	No	No
40) Declaration Statement	No	No
41) Declaration Statement	No	No
42) Declaration Statement	No	No
43) Declaration Statement	No	No
44) Declaration Statement	No	No
45) Declaration Statement	No	No
46) Declaration Statement	No	No
47) Declaration Statement	No	No
48) Declaration Statement	No	No
49) Declaration Statement	No	No
50) Declaration Statement	No	No
51) Declaration Statement	No	No
52) Declaration Statement	No	No
53) Declaration Statement	No	No
54) Declaration Statement	No	No
55) Declaration Statement	No	No
56) Declaration Statement	No	No
57) Declaration Statement	No	No
58) Declaration Statement	No	No
59) Declaration Statement	No	No
60) Declaration Statement	No	No
61) Declaration Statement	No	No
62) Declaration Statement	No	No
63) Declaration Statement	No	No
64) Declaration Statement	No	No
65) Declaration Statement	No	No
66) Declaration Statement	No	No
67) Declaration Statement	No	No
68) Declaration Statement	No	No
69) Declaration Statement	No	No
70) Declaration Statement	No	No
71) Declaration Statement	No	No
72) Declaration Statement	No	No
73) Declaration Statement	No	No
74) Declaration Statement	No	No
75) Declaration Statement	No	No
76) Declaration Statement	No	No
77) Declaration Statement	No	No
78) Declaration Statement	No	No
79) Declaration Statement	No	No
80) Declaration Statement	No	No
81) Declaration Statement	No	No
82) Declaration Statement	No	No
83) Declaration Statement	No	No
84) Declaration Statement	No	No
85) Declaration Statement	No	No
86) Declaration Statement	No	No
87) Declaration Statement	No	No
88) Declaration Statement	No	No
89) Declaration Statement	No	No
90) Declaration Statement	No	No
91) Declaration Statement	No	No
92) Declaration Statement	No	No
93) Declaration Statement	No	No
94) Declaration Statement	No	No
95) Declaration Statement	No	No
96) Declaration Statement	No	No
97) Declaration Statement	No	No
98) Declaration Statement	No	No
99) Declaration Statement	No	No
100) Declaration Statement	No	No

Above mentioned document contains detailed system and equipment description are considered as proprietary information in operation of the equipment. The public disclosure of above documents might be harmful to our company and would give competitor an unfair advantage in the market.

It is our understanding that all measurement test reports, FCC ID label format and corresponding during certification review process cannot be granted as confidential documents and those information will be available for public review once the grant of equipment authorization is issued.

Sincerely,

1/3

[pdf] Confidentiality Request Letter

Adria Galin Pons Confidentiality ZVOX Audio LLC AV455 ACCUVOICE TV SPEAKER 2A3BP 2A3BPAV455 av455

C5266091_X10_Ed.1 ZVOX Audio, LLC Office of Engineering Technology Federal Communications Commission 7435 Oakland Mills Road Columbia, MD 21046
Subject: Request for Confidentiality FCC ID:2A3BP-**AV455** Date: May 20, 2022 To Whom It May Concern, Pursuant to the provisions of Sections 0.457 and 0.45...
lang:en score:34 filesize: 51.86 K page_count: 2 document date: 2022-06-01

Shenzhen CTL Testing Technology Co., Ltd.
Tel: 86-755-89486194 E-mail: ctl@ctl-lab.com

TEST REPORT
FCC PART 15 SUBPART C 15.247 & RSS-247

Report Reference No.: CTL2206070034-WF

Completed by: Happy Gao (Test Administrator)
Tested by: Gary Gao (Test Engineer)
Approved by: Ivan Xie (Manager)

Product Name: ACCUVOICE TV SPEAKER
Model/Type reference: AV455
List Model(s): N/A
Trade Mark: ZVOX
FCC ID: 2A3BP-AV455

Applicant's name: ZVOX Audio, LLC
Address of applicant: 17 Columbia Street, Swampscott, Massachusetts 01907, United States
Test Firm: Shenzhen CTL Testing Technology Co., Ltd.
Address of Test Firm: Floor 1-A, Baohu Technology Park, No. 3011, Shatexi Road, Nanshan District, Shenzhen, China 518055

Test specification: 47 CFR FCC Part 15 Subpart C 15.247
RSS-247 Issue 2, February 2017
TTF Originator: Shenzhen CTL Testing Technology Co., Ltd.
Master TTF: Dated 2011-01

Date of receipt of test item: May 07, 2022
Date of sampling: May 07, 2022
Date of Test Date: May 07, 2022 - May 23, 2022
Date of Issue: May 23, 2022
Result: Pass

Shenzhen CTL Testing Technology Co., Ltd. All rights reserved.
This publication may be reproduced in whole or in part for non-commercial purposes as long as the Shenzhen CTL Testing Technology Co., Ltd. is acknowledged as copyright owner and source of the material. Shenzhen CTL Testing Technology Co., Ltd. takes no responsibility for and will not assume liability for damages resulting from the reader's interpretation of the reproduced material due to its placement and content.

[pdf] Specifications Test Report

Measurement Report Kent Test reports ZVOX Audio LLC AV455 ACCUVOICE TV SPEAKER 2A3BP 2A3BPAV455 av455
Shenzhen CTL Testing Technology Co., Ltd. Tel: 86-755-89486194 E-mail: ctl@ctl-lab.com TEST REPORT ... ct Name : ACCUVOICE TV SPEAKER
Model/Type reference : **AV455** List Model s : N/A
Trade Mark.....
lang:en score:34 filesize: 2.44 M page_count: 39 document date: 2022-06-01

RF Exposure evaluation				
FCC ID: 2A3BP-AV455				
Exposure category: General population/uncontrolled environment				
EUT Type: Production Unit				
Device Type: Mobile Device				
1. Reference				
According to §1.1307(b)(1), systems operating under the provisions of this section shall be operated in a manner that ensures that the public is not exposed to radio frequency energy level in excess of the Commission's guidelines.				
According to §1.1310 and §1.1309, RF exposure is calculated.				
K2004-001-001: Mobile and Portable Devices RF Exposure Procedures and Equipment Authorization Policies				
2. Limit				
Limits for Maximum Permissible Exposure (MPE) for Uncontrolled Exposure				
Frequency Range (MHz)	Electric Field Strength (V/m)	Magnetic Field Strength (A/m)	Power Density (uW/cm²)	Averaging Time (minutes)
Limits for Occupational/Controlled Exposure				
0.3 - 3.0	614	1.63	(100)²	6
3.0 - 30	18429	4.803	(100)²	6
30 - 300	61.4	0.265	1.0	6
300 - 1500	/	/	E300	6
1500 - 100000	/	/	S	6
Limits for Maximum Permissible Exposure (MPE) for Controlled Exposure				
Frequency Range (MHz)	Electric Field Strength (V/m)	Magnetic Field Strength (A/m)	Power Density (uW/cm²)	Averaging Time (minutes)
Limits for Occupational/Controlled Exposure				
0.3 - 3.0	614	1.63	(100)²	30
3.0 - 30	6248	2.107	(100)²	30
30 - 300	27.5	0.073	0.2	30
300 - 1500	/	/	E300	30
1500 - 100000	/	/	1.0	30
F: Frequency in MHz ~F: Electric field strength power density				
1 / 2				

[pdf] SAR Rating

Daria RF Exposure ZVOX Audio LLC AV455 ACCUVOICE TV SPEAKER 2A3BP 2A3BPAV455 av455

RF Exposure evaluation FCC ID: 2A3BP-**AV455** Exposure category: General population/uncontrolled environment EUT Type: Production Unit Device Type: Mobile Device 1. Reference According to 1.1307 b 1 , systems operating under the provisions of this section shall be operated in a manner that ensures...

lang:en score:26 filesize: 200.22 K page_count: 2 document date: 2022-08-03

CS260091_08_06.1

Letter of Authorization

Company: ZVOX Audio, LLC

Address: 17 Columbia Street, Swampscott, Massachusetts 01907, United States

Product Name: ACCUVOICE TV SPEAKER

Model Number: AV455

FCC Identifier: 2A3BP-AV455

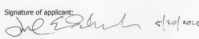
We authorize LGAI Technological Center S.A., Ronda de la Font del Camí, s/n, 08193 Bellaterra, Spain, to act on our behalf on all matters concerning the above named equipment.

Any individual within LGAI Technological Center S.A. is authorized to act on our behalf and take action on the application.

We declare that authorize LGAI Technological Center S.A., Ronda de la Font del Camí, s/n, 08193 Bellaterra, Spain, is allowed to forward all information related to the approval project to the Federal Communication Commission and to discuss any issues concerning the approval application. Any and all acts carried out by LGAI Technological Center S.A. on our behalf shall have the same effect as acts of our own.

Name: Jari Salmea Date: May 20, 2022

Title: VP Product Development

Signature of applicant: 

[pdf]

Letter Authorization ZVOX Audio LLC AV455 ACCUVOICE TV SPEAKER 2A3BP 2A3BPAV455 av455

...

lang:en score:16 filesize: 675.13 K page_count: 1 document date: 2022-05-25

Appendix F: Number of hopping channels					
Test Result					
TestMode	Antenna	Channel	Flavor[Hz]	Limit[Hz]	Verdict
DH5	Ant1	Hop	79	>15	PASS
2DH5	Ant1	Hop	79	>15	PASS
3DH5	Ant1	Hop	79	>15	PASS

Page 22 of 28

[pdf] Test Report

Tonscend Test reports ZVOX Audio LLC AV455 ACCUVOICE TV SPEAKER 2A3BP 2A3BPAV455 av455

Appendix F: Number of hopping channels Test Result TestMode DH5 2DH5 3DH5 Antenna Ant1 Ant1 Ant1 Channel Hop Hop Hop Result Num 79 79 79 Limit Num 15 15 15 Verdict PASS PASS PASS Page 22 of 38 Test Graphs DH5_Ant1_Hop 2DH5_Ant1_Hop 3DH5_Ant1_Hop Page 23 of 38 Appendix G:Band edge measur...

lang:nl score:16 filesize: 4.89 M page_count: 17 document date: 2022-07-28

Annex for FCC Bluetooth BR/EDR
Test Report No. : CTL2205075034-WF

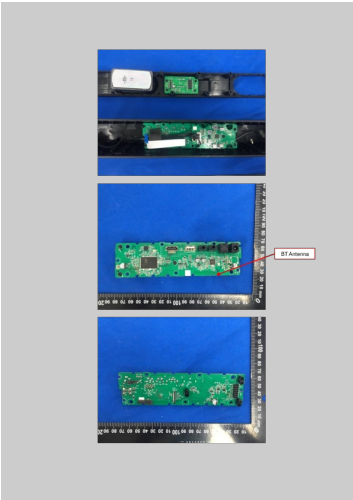
Appendix A: 20dB Emission Bandwidth
Test Result

TestMode	Antenna	Channel	20dB Emission Bandwidth	F (L)MHz	F (H)MHz	LowEmission	Version
20dB	Ant1	2402	0.957	2401.939	2402.402	---	PASS
		2441	0.954	2440.938	2441.402	---	PASS
		2480	0.954	2479.939	2480.402	---	PASS
20dB	Ant1	2402	1.326	2401.937	2402.883	---	PASS
		2441	1.326	2440.937	2441.883	---	PASS
		2480	1.326	2479.934	2480.880	---	PASS
20dB	Ant1	2402	1.299	2401.932	2402.811	---	PASS
		2441	1.302	2440.932	2441.854	---	PASS
		2480	1.302	2479.932	2480.854	---	PASS

Page 3 of 38

[pdf] Test Report

Tonscend Test reports ZVOX Audio LLC AV455 ACCUVOICE TV SPEAKER 2A3BP 2A3BPAV455 av455
Annex for FCC Bluetooth BR/EDR Test Report No. : CTL2205075034-WF Appendix
A: 20dB Emission Bandwidth Test Result TestMode Antenna DH5 Ant1 2DH5 Ant1
3DH5 Ant1 Channel 2402 2441 2480 2402 2441 2480 2402 2441 2480 20db EBW
MHz 0.957 0.954 0.954 1.326 1.326 1.326 1.299 1.302 1.302 FL MHz ...
lang:es score:16 filesize: 5.27 M page_count: 21 document date: 2022-07-28



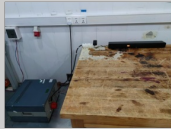
[pdf] Product Photos Teardown

Measurement Report Kent Internal photos ZVOX Audio LLC AV455 ACCUVOICE TV SPEAKER 2A3BP
2A3BPAV455 av455
BT Antenna ...
lang:es score:15 filesize: 568.51 K page_count: 3 document date: 2022-06-01



[pdf] Product Photos

Measurement Report Kent External photos ZVOX Audio LLC AV455 ACCUVOICE TV SPEAKER 2A3BP
2A3BPAV455 av455
...
lang:es score:15 filesize: 398.49 K page_count: 3 document date: 2022-06-01



[\[pdf\]](#) Product Photos

Measurement Report Kent Test setup photos ZVOX Audio LLC AV455 ACCUVOICE TV SPEAKER
2A3BP 2A3BPAV455 av455

...

lang:es **score:15** filesize: 208.79 K page_count: 1 document date: 2022-06-01