

Manuals+

[Q & A](#) | [Deep Search](#) | [Upload](#)

manuals.plus /

› [RAAYOO](#) /

› [RAAYOO L002-U1 AHD 720P Backup Camera User Manual](#)

RAAYOO L002-U1

RAAYOO L002-U1 AHD 720P Backup Camera User Manual

1. INTRODUCTION

The RAAYOO L002-U1 is an advanced AHD 720P backup camera designed to enhance vehicle safety. It features a 170-degree wide-angle optical glass HD lens, a robust metal housing, and an IP69 waterproof rating, ensuring reliable performance in various conditions. This camera supports both AHD 720P and HD CVBS video signals, offering compatibility with a wide range of display units. It can be configured for rear, side, or front view applications.



Image 1.1: RAAYOO L002-U1 AHD 720P Backup Camera, showcasing both flush mount and bracket mount designs.



Image 1.2: The RAAYOO L002-U1 camera providing a clear rear view image on a vehicle's display.

2. PACKAGE CONTENTS

Verify that all items listed below are included in your package:

- 1 x RAAYOO Camera
- 1 x 26ft Double Shielded Video Wire
- 1 x 5ft Camera Power Wire
- 1 x Camera Mount and Screws (for bracket mounting)
- 1 x Panel Removal Tool
- 4 x Wire Clamps
- 1 x Electrical Tape
- 1 x 18.5mm Hole Saw (for flush mounting)
- 5 x Zip ties
- 1 x User Manual

Package Content:

Tips: 26ft Double Shielded Video Wire included

 <p>1 x Camera</p>	 <p>26.2ft/8m Video Wire</p>	
 <p>2 x Screws</p>	 <p>1 x Camera Cable</p>	 <p>4 x Wire Clamps</p>
 <p>Bracket mounting accessories</p>	 <p>Electrical Tape</p>	 <p>5 x Zip ties</p>
 <p>Panel Remover</p>	 <p>Hole Saw</p>	 <p>User manual</p>

Image 2.1: All components included in the RAAAYOO L002-U1 backup camera package.

3. SPECIFICATIONS

Feature	Specification
Model Number	L002-U1
Video Resolution	AHD 720P (default), HD CVBS (switchable)
View Angle	170 Degrees (Wide Angle)
Waterproof Rating	IP69
Housing Material	Metal
Operating Voltage	12V-24V DC
Connector Type	RCA

Feature	Specification
Installation Type	Flush Mount (18.5mm), Bracket Mount
Optical Sensor Technology	CMOS
Product Dimensions	7.3"L x 7.3"W x 9.1"H
Item Weight	11.2 ounces

4. SETUP AND INSTALLATION

The RAYOO L002-U1 camera offers two primary installation methods: flush mounting and bracket mounting. Choose the method that best suits your vehicle and desired camera placement.

4.1. Flush Mounting (18.5mm)

For a discreet, integrated look, the camera can be flush-mounted into a drilled hole. Use the included 18.5mm hole saw for precise drilling.



Image 4.1: Flush mount installation diagram, showing components and dimensions.

Flush Mounting Installation



As a front view camera without guide line



Image 4.2: Flush mount camera installed as a front view camera, showing the view on a car display.

Flush Mounting Installation



As a rear view camera with guideline



Image 4.3: Flush mount camera installed as a rear view camera, showing the view on a car display with guidelines.

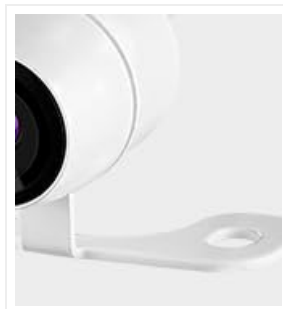


Image 4.4: The included 18.5mm high-speed steel core hole saw for flush mounting.

4.2. Bracket Mounting

For surface mounting, use the provided bracket and screws. This option is suitable for various scenarios and environments.



Image 4.5: Bracket mount installation diagram, showing components and dimensions.



Image 4.6: Bracket mount camera installed as a front view camera, showing the view on a car display.



Image 4.7: Bracket mount camera installed as a rear view camera, showing the view on a car display.

4.3. Wiring Connection

Connect the camera to your vehicle's power supply and display unit using the provided cables. The camera's power cord uses thick copper core wire for easier connection, and the video cable features a mini 4-pin connector for simplified routing through the vehicle body.



Image 4.8: Wiring diagram for connecting the backup camera to your vehicle's head unit and power source.



Image 4.9: The camera is compatible with head units featuring a standard RCA input connector.

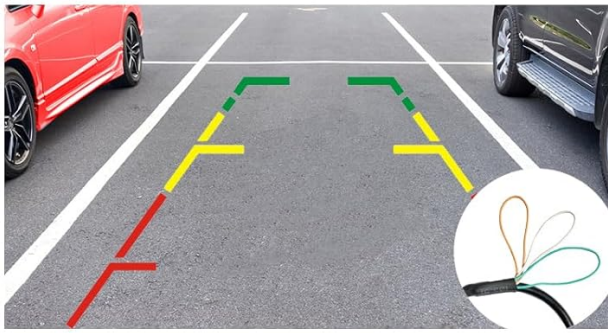
5. OPERATING INSTRUCTIONS

The RAYOO L002-U1 camera features multifunctional wire loops that allow customization of its output. Ensure the camera is powered off before making any changes to the wire loops, and power it on again after cutting.

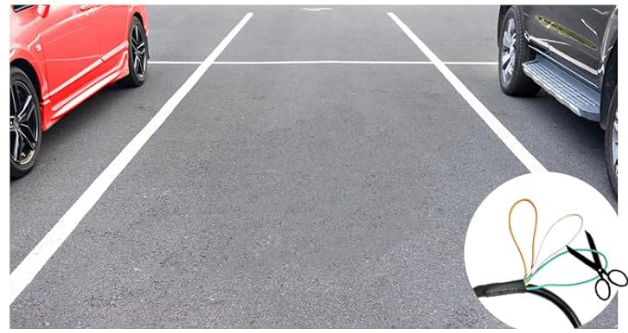
5.1. Multifunctional Wire Loops

- **Orange Loop:** Converts AHD 720P to CVBS image. Cut this loop if your head unit does not support AHD 720P. The default setting is AHD 720P.
- **Green Loop:** Cancels the guide line display. Cut this loop to remove parking guidelines from the image. The default setting includes guide lines.
- **White Loop:** Converts rear view (mirror image) to front view (normal image). Cut this loop to switch the image orientation for front camera use. The default setting is rear view (mirror image).

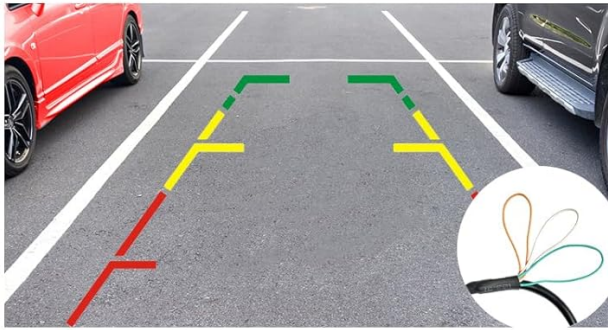
Important Notes: Please power on again after you cut the small loops



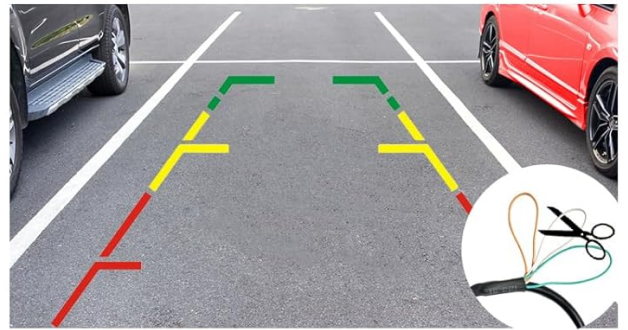
Keep the green loop, the guide line appear



Cut the green loop, the guide line disappear



Keep the white loop, Mirror image(rear view)



Cut the white loop, Normal image(front view)



Keep the orange loop, AHD video signal output



Cut the orange loop, CVBS video signal output

Image 5.1: Visual guide to the multifunctional wire loops and their effects on the camera display.

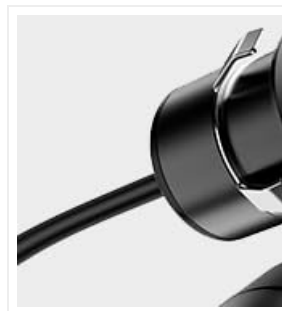


Image 5.2: Comparison of AHD 720P and CVBS video output, highlighting the function of the orange wire loop.

6. MAINTENANCE

The RAAYOO L002-U1 camera is designed for durability and minimal maintenance. Its robust construction ensures long-term performance.

6.1. Waterproof Design

The camera features a remarkable IP69 waterproof rating, achieved through a fully sealed glue filling craft. This design provides superior protection against water, fog, and mist compared to IP67 and IP68 rated devices.



 **IP69** **100% Waterproof**
Shell seal upgrade treatment,
100% Waterproof



Image 6.1: The camera's IP69 waterproof design ensures functionality in challenging weather conditions.

6.2. General Care

To maintain optimal image clarity, periodically clean the camera lens with a soft, damp cloth. Avoid using abrasive cleaners or solvents that could damage the lens or housing.

7. TROUBLESHOOTING

Refer to the following information for common issues and solutions:

7.1. No Image Display

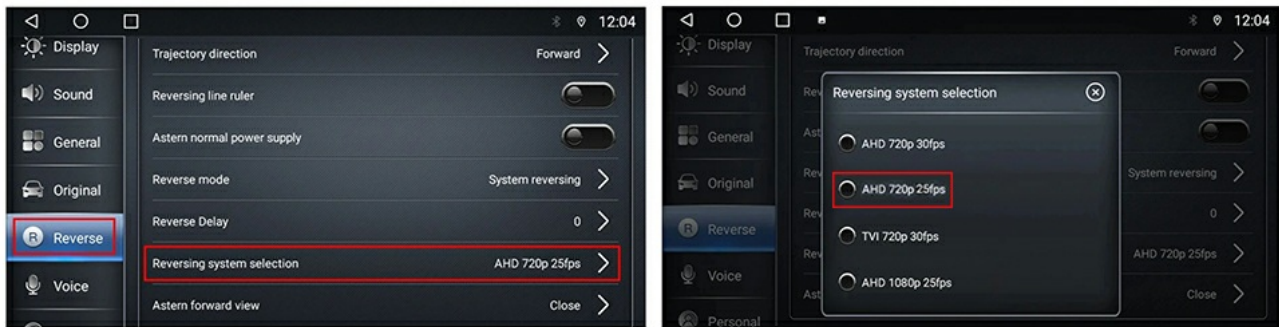
- **Compatibility Check:** This camera is only compatible with car screens that have an RCA connector. It is not designed for dash cameras, GPS units, or car recorders.
- **AHD/CVBS Signal:** If your head unit supports AHD 720P, ensure the camera is set to AHD 720P/NTSC.

Navigate to your car's settings (e.g., Car settings >> Factory settings >> Reverse (Picture) settings) and select AHD720P/NTSC (CVBS N). If your head unit does not support AHD 720P, cut the orange wire loop on the camera cable to switch to HD CVBS video signal. Failure to do so may result in a black screen.

- **Factory Radio Connection:** If connecting to a factory radio and no image appears, you may need to order a specific harness and programmer to complete the installation, as different radios require different components to function correctly.

Please check if your head unit supports AHD 720P camera

Go to Car Settings> Factory Defaults> Reversing Settings (Image)> Select AHD 720P 25fps



Tip:

Our AHD 720P backup camera only supports AHD 720P 25fps/NTSC(CVBS N)

1. CVBS video cameras are universal for all monitors, AHD will only work with AHD monitor
2. Some cheap or old Android stereos have the setting of AHD video signal input option, but the truth it does not work, because their hardware inside do not support it. If so, please use CVBS video signal output (cut the orange wire loop, otherwise you will get a black screen).

Image 7.1: Instructions for selecting AHD 720P/NTSC in your car's head unit settings.

7.2. RAYYOO 5-inch Monitor Compatibility

For compatibility with RAYYOO 5-inch monitors, the camera must be switched to CVBS signal mode by cutting the orange wire loop.

8. WARRANTY AND SUPPORT

RAYYOO is committed to providing quality products and customer satisfaction.

- **2-Year Replacement:** Your product is covered by a 2-year replacement warranty.
- **30-Day Return:** You may return the product within 30 days of purchase.
- **24-Hour Customer Service:** For any inquiries or support needs, RAYYOO offers 24-hour customer service.

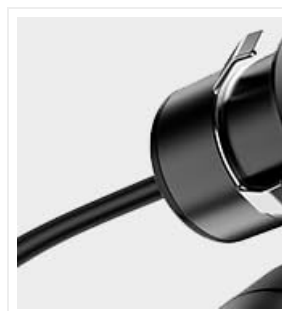


Image 8.1: RAYYOO customer service and warranty information.

