

HOMELYLIFE 3003

HOMELYLIFE Cordless Hair Straightener and Curler 2-in-1 User Manual

Model: 3003

1. INTRODUCTION

Thank you for choosing the HOMELYLIFE Cordless Hair Straightener and Curler. This compact and portable 2-in-1 styling tool is designed for convenience and versatility, allowing you to straighten or curl your hair anytime, anywhere. Featuring a USB rechargeable 5000mAh battery, fast heat-up, and anti-scald design with 4-level adjustable temperature settings, this device offers efficient and safe hair styling on the go. Please read this manual thoroughly before use to ensure proper operation and to maximize the lifespan of your product.

Compact & Portable for Travel



Image 1.1: The HOMELYLIFE Cordless Hair Straightener, showcasing its compact size and portability for travel.

2. SAFETY INFORMATION

To reduce the risk of burns, electrocution, fire, or injury to persons, please observe the following safety precautions:

- Do not use this appliance near water, such as bathtubs, showers, basins, or other vessels containing water.
- Always unplug the appliance immediately after use and before cleaning.
- Keep the appliance away from children. This product is not a toy.
- Do not operate the appliance if it has a damaged cord or plug, if it is not working properly, or if it has been dropped or damaged.
- Keep the cord away from heated surfaces. Do not wrap the cord around the appliance.
- Never block the air openings of the appliance or place it on a soft surface, such as a bed or couch, where the air openings may be blocked.
- Do not use outdoors or operate where aerosol (spray) products are being used or where oxygen is being administered.
- The appliance is hot when in use. Do not let eyes or bare skin touch heated surfaces.

- Always allow the appliance to cool completely before storing.
- Use this appliance only for its intended use as described in this manual.

3. PACKAGE CONTENTS

Please check the package for the following items:

- HOMELYLIFE Cordless Hair Straightener and Curler
- USB Type-C Charging Cable
- Carrying Pouch
- User Manual

4. PRODUCT OVERVIEW

Familiarize yourself with the components of your HOMELYLIFE Cordless Hair Straightener and Curler:



Image 4.1: Labeled diagram of the HOMELYLIFE Cordless Hair Straightener's key features.

- **Ceramic Glazed Heating Plates:** Designed for even heat distribution and smooth gliding through hair.
- **LCD Display Screen:** Shows current temperature and battery level.

- **Temperature Display:** Indicates the selected heat setting.
- **Power Display:** Shows the remaining battery charge.
- **ON/OFF Button:** Used to power the device on and off, and to adjust temperature.
- **Lock Button:** Secures the plates together for compact storage and travel.
- **Charging Port (USB Type-C):** For connecting the charging cable.

The device features upgraded wider and longer 3D floating heating plates, measuring 2.2cm x 8.0cm, which allow for more efficient styling by covering a larger hair section per pass.



Image 4.2: Illustration of the wider and longer 3D floating heating plates for improved styling efficiency.

5. CHARGING THE DEVICE

The HOMELYLIFE Cordless Hair Straightener is equipped with a 5000mAh Li-ion battery and charges via a USB Type-C port.

1. Ensure the device is turned off before charging.
2. Connect the provided USB Type-C charging cable to the charging port on the device.
3. Plug the other end of the USB cable into a compatible USB power source (e.g., USB adapter, mobile power bank, car charger, computer USB port).

- The power display on the LCD screen will indicate charging status. A full charge typically takes approximately 2 hours.
- Once fully charged, the device can provide up to 60 minutes of usage time, depending on the temperature setting and hair type.



Image 5.1: Charging the device using the USB Type-C port.

6. OPERATING INSTRUCTIONS

6.1. Power On/Off

- To turn on: Press and hold the ON/OFF button for a few seconds until the LCD screen illuminates.
- To turn off: Press and hold the ON/OFF button for a few seconds until the LCD screen turns off.

6.2. Temperature Adjustment

The device offers 4 adjustable temperature levels. It heats up rapidly, reaching 180°C in approximately 30 seconds and 200°C in about 60 seconds.

- After turning on the device, press the ON/OFF button repeatedly to cycle through the temperature settings.
- The LCD screen will display the selected temperature.



4 Temperature Levels

LCD Screen Display

Set temperature & battery level at a glance

	200°C (392°F) For medium thick or wavy hair
	180°C (356°F) For hard hair
	160°C (320°F) For normal textured hair
	140°C (284°F) For fine/thin/bleached colored hair

Image 6.1: Temperature settings and recommended hair types.

- **140°C (284°F):** Suitable for fine, thin, or bleached colored hair.
- **160°C (320°F):** Suitable for normal textured hair.
- **180°C (356°F):** Suitable for hard hair.
- **200°C (392°F):** Suitable for medium thick or wavy hair.



Image 6.2: Illustration of the rapid heating technology.

6.3. Straightening Hair

1. Ensure your hair is clean, dry, and detangled.
2. Select the appropriate temperature setting for your hair type.
3. Separate a small section of hair.
4. Place the hair section between the heating plates, close to the roots.
5. Gently glide the straightener down the hair section from root to tip. Repeat if necessary.

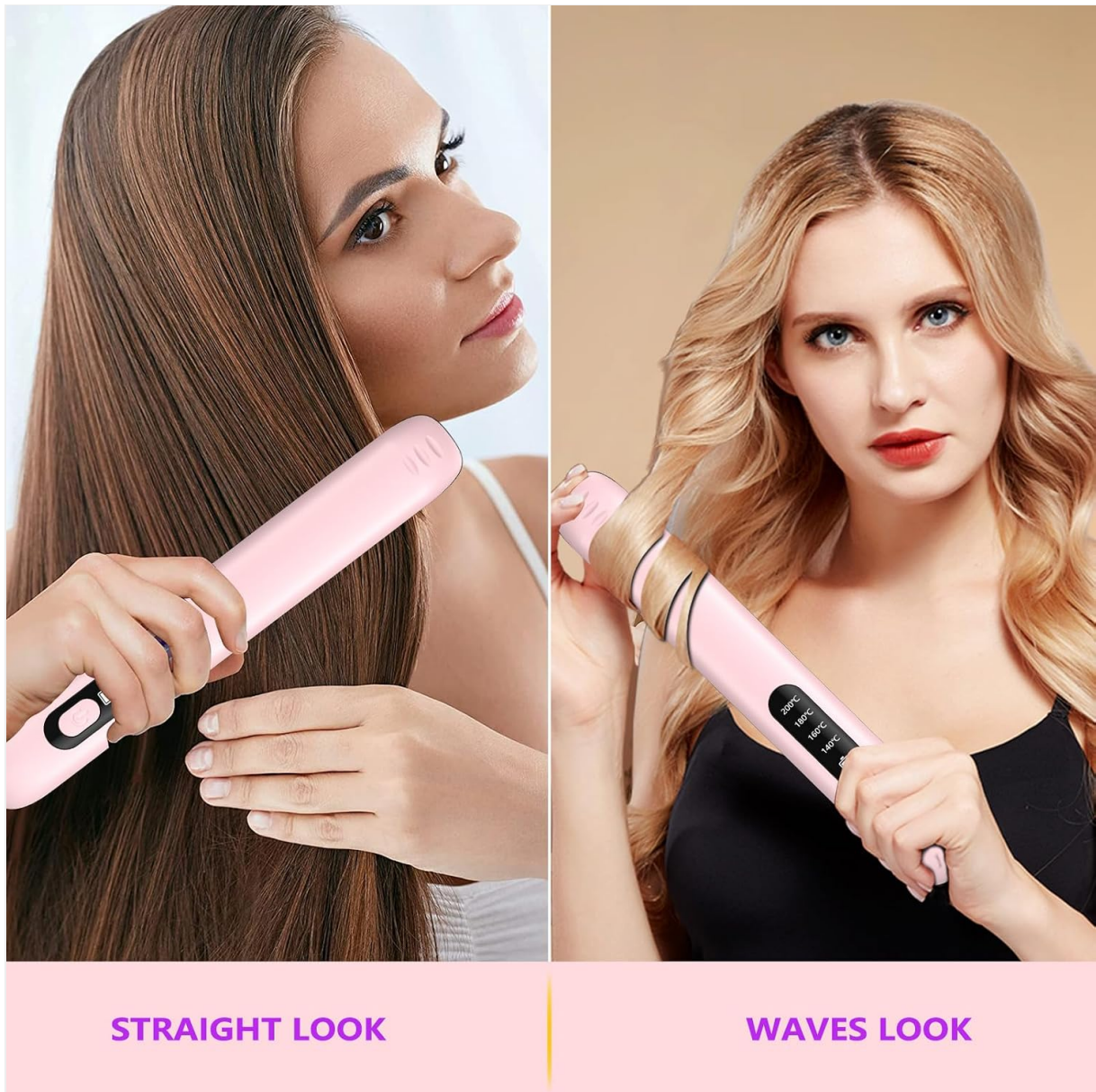


Image 6.3: Demonstrating the straight hair styling function.

6.4. Curling Hair

1. Ensure your hair is clean, dry, and detangled.
2. Select the appropriate temperature setting for your hair type.
3. Separate a small section of hair.
4. Clamp the straightener onto the hair section, about halfway down the length.
5. Rotate the straightener 180 degrees away from your face, then slowly pull it down through the hair section to create a curl.
6. For a more defined curl, hold the straightener in place for a few seconds before pulling down.

Image 6.4: Demonstrating the wavy hair styling function (refer to right side of Image 6.3).

7. MAINTENANCE AND CARE

- **Cleaning:** Ensure the appliance is turned off, unplugged, and completely cool before cleaning. Wipe the exterior with a soft, damp cloth. Do not use abrasive cleaners or immerse the appliance in water.
- **Storage:** When not in use, store the appliance in a cool, dry place, away from moisture and direct sunlight. Use the provided carrying pouch for protection. Ensure the plates are locked together using the

lock button for compact storage.

- **Cord Care:** Do not wrap the charging cable around the appliance. Store the cable loosely to prevent damage.

8. TROUBLESHOOTING

Problem	Possible Cause	Solution
Device does not turn on.	Battery is depleted.	Charge the device fully using the USB Type-C cable.
Device not heating up.	Device not powered on or low battery.	Ensure the device is turned on and fully charged. Check temperature setting.
Short battery life.	High temperature setting used; frequent use.	Lower temperature setting if possible. Ensure full charge before each use. Battery life varies with usage.
Hair not straightening/curling effectively.	Incorrect temperature setting; hair section too large; hair not clean/dry.	Adjust temperature for your hair type. Use smaller hair sections. Ensure hair is clean and completely dry.

9. SPECIFICATIONS

Feature	Specification
Model Number	3003
Product Dimensions	9"L x 1.7"W (23.5 cm length)
Item Weight	260 Grams (9.17 ounces)
Battery Type	Lithium Polymer (4 included)
Battery Capacity	5000mAh
Charging Port	USB Type-C
Max Temperature Setting	200°C (392°F)
Adjustable Temperatures	140°C, 160°C, 180°C, 200°C
Manufacturer	Shenzhen Montado E-commerce Co., Ltd

10. WARRANTY AND SUPPORT

HOMELYLIFE products are manufactured to high-quality standards. For information regarding warranty coverage, technical support, or customer service inquiries, please refer to the contact information provided with your purchase or visit the official HOMELYLIFE website. Please retain your proof of purchase for warranty claims.

