

Scheppach HMS1500

Scheppach HMS1500 Planer/Thicknesser User Manual

Model: HMS1500

INTRODUCTION

Thank you for choosing the Scheppach HMS1500 Planer/Thicknesser. This manual provides essential information for the safe operation, setup, maintenance, and troubleshooting of your machine. Please read these instructions carefully before initial use and keep them for future reference. Proper use and maintenance will ensure optimal performance and extend the lifespan of your tool.

GENERAL SAFETY INSTRUCTIONS

WARNING: Read all safety warnings, instructions, illustrations, and specifications provided with this power tool. Failure to follow all instructions listed below may result in electric shock, fire, and/or serious injury.

- **Work Area Safety:** Keep the work area clean and well-lit. Cluttered or dark areas invite accidents. Do not operate power tools in explosive atmospheres, such as in the presence of flammable liquids, gases, or dust. Power tools create sparks which may ignite the dust or fumes. Keep children and bystanders away while operating a power tool. Distractions can cause you to lose control.
- **Electrical Safety:** Power tool plugs must match the outlet. Never modify the plug in any way. Do not use any adapter plugs with earthed (grounded) power tools. Unmodified plugs and matching outlets will reduce risk of electric shock. Avoid body contact with earthed or grounded surfaces, such as pipes, radiators, ranges, and refrigerators. There is an increased risk of electric shock if your body is earthed or grounded. Do not expose power tools to rain or wet conditions. Water entering a power tool will increase the risk of electric shock. Do not abuse the cord. Never use the cord for carrying, pulling, or unplugging the power tool. Keep cord away from heat, oil, sharp edges, or moving parts. Damaged or entangled cords increase the risk of electric shock.
- **Personal Safety:** Always wear eye protection. Use safety glasses, goggles, or a face shield. Wear hearing protection when operating noisy tools. Wear a dust mask if the operation creates dust. Dress properly. Do not wear loose clothing or jewelry. Keep your hair and clothing away from moving parts. Loose clothes, jewelry, or long hair can be caught in moving parts.
- **Power Tool Use and Care:** Do not force the power tool. Use the correct power tool for your application. The correct power tool will do the job better and safer at the rate for which it was designed. Disconnect the plug from the power source and/or remove the battery pack, if detachable, from the power tool before making any adjustments, changing accessories, or storing power tools. Such preventive safety measures reduce the risk of starting the power tool accidentally. Store idle power tools out of the reach of children and do not allow persons unfamiliar with the power tool or these instructions to operate the power tool. Power tools are dangerous in the hands of untrained users.

- **Specific Planer/Thicknesser Safety:**

- Always ensure the workpiece is free of nails, screws, or other foreign objects before planing.
- Never plane material shorter than 300mm (12 inches) without a push block.
- Keep hands clear of the cutter head at all times.
- Ensure all guards are in place and functioning correctly before operation.
- Always feed the workpiece against the direction of rotation of the cutter head.
- Do not remove jammed workpieces until the machine is switched off and the cutter head has stopped completely.
- Connect the machine to a dust extraction system to minimize airborne dust.

PRODUCT OVERVIEW

The Scheppach HMS1500 is a versatile 2-in-1 planer and thicknesser designed for woodworking tasks. It allows for precise surface planing (jointing) and thicknessing of various wood types, ensuring straight and parallel surfaces. Key features include a powerful motor, adjustable tables, and an integrated dust extraction port.

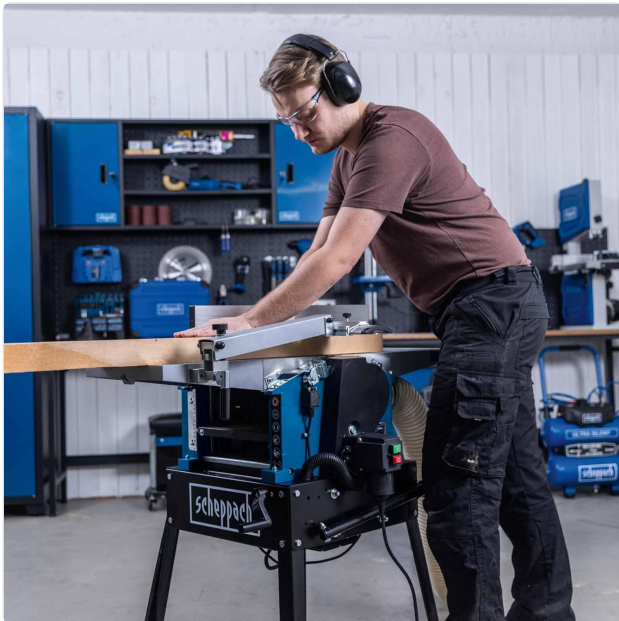


Figure 1: Operator using the Scheppach HMS1500 for planing wood.
Always wear appropriate personal protective equipment.



Arbre porte-fers à 2 fers avec un régime à 6500 min⁻¹ pour un rabotage fluide et précis.

Figure 2: Detail view of the wood passing through the planer, demonstrating the precise cutting action of the 2-blade cutter head.

Support avec poignées et roues de transport pour une assise stable et une facilité de transport de la machine.



Figure 3: The machine features transport handles and wheels for easy mobility within the workshop.

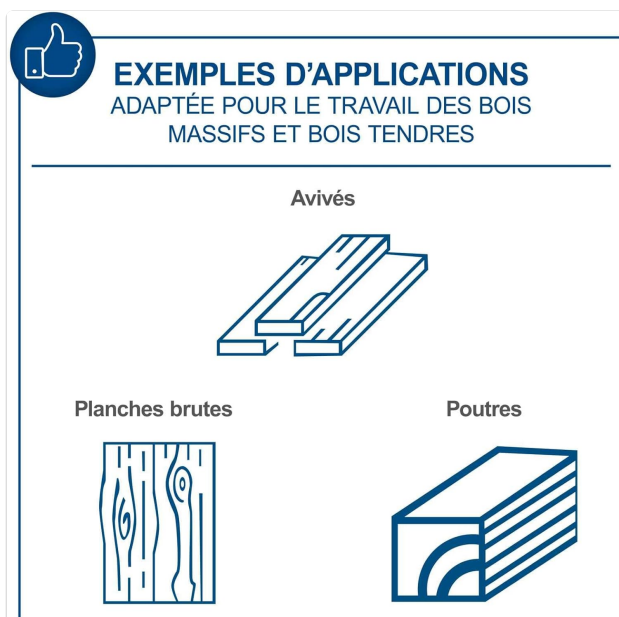


Figure 4: Front-side view of the Scheppach HMS1500, showcasing its robust construction and controls.

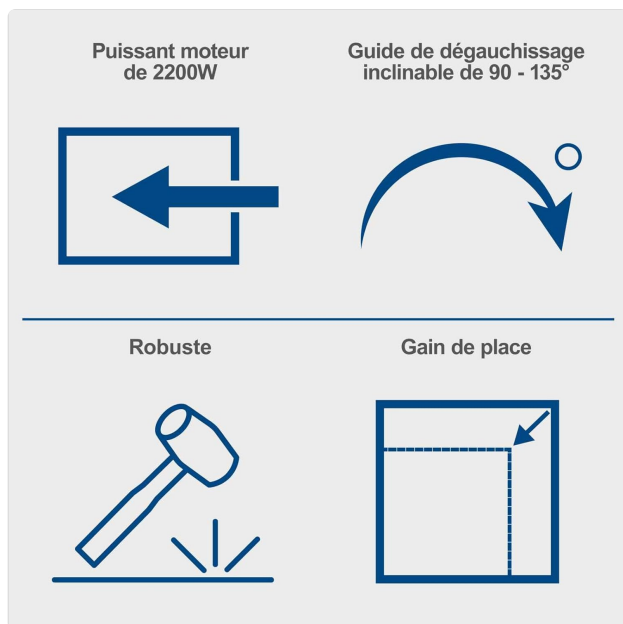


Figure 5: Rear view of the machine, highlighting the integrated dust extraction port for a clean working environment.

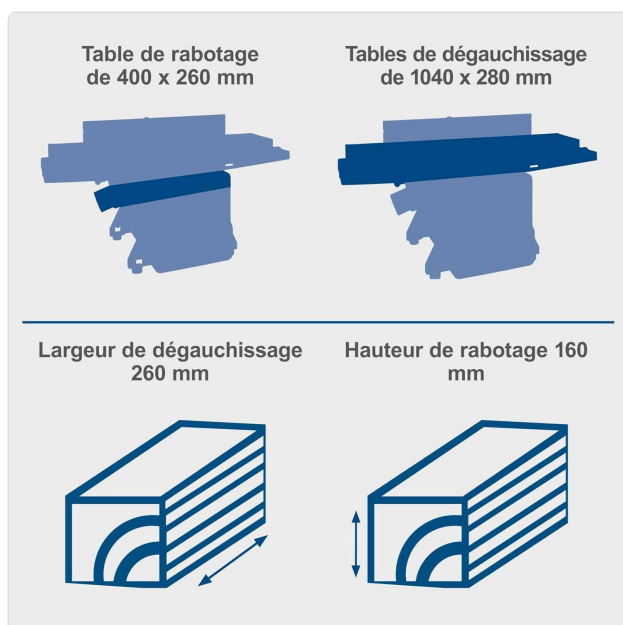


Figure 6: Three-quarter view of the Scheppach HMS1500, showing the planer tables and thicknesser bed configuration.

Note on Videos: No official product videos from the seller were found to be relevant for inclusion in this instruction manual.

SETUP AND ASSEMBLY

Before operating the machine, ensure it is properly assembled and secured. Refer to the assembly diagrams in your packaging for detailed steps.

1. **Unpacking:** Carefully remove all components from the packaging. Check for any damage during transit. Retain packaging for future transport or storage.
2. **Base Assembly:** Assemble the stand/base according to the provided instructions. Ensure all bolts are securely tightened. The machine is heavy (71 kg), so assistance may be required.
3. **Machine Mounting:** Mount the planer/thicknesser unit onto the assembled stand. Secure it firmly using the provided fasteners.

4. **Dust Extraction Connection:** Connect a suitable dust extraction system to the integrated dust port. This is crucial for maintaining a clean workspace and for your health.
5. **Electrical Connection:** Ensure the power supply matches the machine's requirements (220-240V). Plug the machine into a grounded outlet.
6. **Initial Checks:** Before first use, manually check that all moving parts are free to move and that all guards are correctly positioned and secured.

OPERATING INSTRUCTIONS

1. Planing (Jointing) Operation

- **Adjusting the Infeed Table:** Set the desired depth of cut using the infeed table adjustment knob. The maximum depth of cut is 3mm.
- **Adjusting the Fence:** Position the aluminum fence at the desired angle (90-135°) and secure it firmly.
- **Feeding the Workpiece:** Place the workpiece on the infeed table. Ensure it is flat and free of defects. Turn on the machine. Carefully feed the workpiece into the cutter head, keeping your hands away from the blades. Use push blocks for shorter pieces.
- **Maintaining Pressure:** Apply even pressure to the workpiece as it passes over the cutter head and onto the outfeed table.

2. Thicknessing Operation

- **Converting to Thicknesser:** Lift and secure the planer tables out of the way to expose the thicknesser bed.
- **Adjusting Thickness:** Use the handwheel to adjust the height of the thicknesser table to achieve the desired final thickness. The maximum thicknessing height is 160mm.
- **Feeding the Workpiece:** Turn on the machine. Feed the workpiece into the thicknesser opening. The feed rollers will automatically pull the wood through. Do not force the workpiece.
- **Multiple Passes:** For significant material removal, take multiple shallow passes rather than one deep pass to prevent overloading the motor and ensure a smoother finish.

MAINTENANCE

Regular maintenance ensures the longevity and safe operation of your Scheppach HMS1500.

- **Cleaning:** After each use, disconnect the machine from the power supply. Clean all wood chips and dust from the tables, cutter head area, and dust extraction port. Use a brush or compressed air. Do not use solvents that may damage painted surfaces.
- **Blade Inspection and Replacement:** Regularly inspect the planer blades for sharpness and damage. Dull or chipped blades can lead to poor finish and increased motor strain. Replace both blades simultaneously to maintain balance. Refer to the detailed instructions in the full manual for blade replacement procedures.
- **Table Lubrication:** Periodically apply a thin coat of dry lubricant (e.g., silicone spray or paste wax) to the planer and thicknesser tables to reduce friction and prevent rust.
- **Motor and Belt Inspection:** Check the motor ventilation openings for obstructions. Inspect drive belts for wear or damage. Replace if necessary.
- **General Fastener Check:** Periodically check all nuts, bolts, and screws for tightness. Tighten as needed.

TROUBLESHOOTING

Problem	Possible Cause	Solution
Machine does not start.	No power supply; Emergency stop engaged; Thermal overload tripped.	Check power connection; Release emergency stop button; Allow motor to cool down and reset.
Poor surface finish (e.g., tear-out, ripples).	Dull or damaged blades; Incorrect depth of cut; Too fast feed rate; Wood grain issues.	Replace or sharpen blades; Reduce depth of cut; Slow down feed rate; Adjust feed direction relative to grain.
Wood jams during thicknessing.	Excessive depth of cut; Workpiece too wide/thick; Feed rollers dirty or worn.	Reduce depth of cut; Ensure workpiece dimensions are within limits; Clean feed rollers.
Excessive vibration or noise.	Loose fasteners; Unbalanced blades; Worn bearings.	Check and tighten all fasteners; Ensure blades are correctly installed and balanced; Contact service for bearing replacement.

If you encounter problems not listed here or if solutions do not resolve the issue, please contact Scheppach customer support.

TECHNICAL SPECIFICATIONS

Feature	Specification
Model	HMS1500
Manufacturer	Scheppach
Power Supply	220-240 V
Motor Power	2200 Watts
Planing Width	260 mm
Thicknessing Height	160 mm
Number of Blades	2
Cutter Head Speed	6500 rpm
Max. Depth of Cut (Planing)	3 mm
Jointer Table Dimensions	1040 x 280 mm (Aluminum)
Fence Swivel Range	90-135°
Machine Material	Cast Iron, Aluminum
Item Weight	71 Kilograms
Color	Blue

WARRANTY AND SUPPORT

Scheppach products are manufactured to high-quality standards. In the unlikely event of a defect, please refer to the following information:

- **Warranty:** This product is covered by legal guarantees. Please retain your proof of purchase for warranty claims.
- **Returns:** A 30-day return policy may apply, subject to retailer terms and conditions.
- **Customer Support:** For technical assistance, spare parts, or warranty inquiries, please contact Scheppach's specialized customer support. Contact details can typically be found on the Scheppach website or your purchase documentation.