

Azocek Power Wheel Adapter for Dewalt 20V Batteries

Azocek Power Wheel Adapter for Dewalt 20V Batteries

Instruction Manual

INTRODUCTION

This manual provides essential information for the safe and effective use of your Azocek Power Wheel Adapter. This adapter is designed to convert Dewalt 18V/20V Lithium batteries for use in various DIY applications, including power wheels, RC cars, toys, and robotics. It features integrated protection mechanisms and a convenient power switch.

SAFETY INFORMATION

- This power wheel adapter is **not a charger**. It only outputs voltage and power directly from your battery.
- Ensure correct polarity when connecting wires: **red wire to positive (+)** and **black wire to negative (-)**. Incorrect connection can damage the adapter and connected devices.
- Always remove the battery from the adapter when not in use for extended periods to prevent potential battery drain.
- Do not exceed the maximum allowable current of **30A** for the 12AWG wire.
- Keep the adapter away from water, moisture, and extreme temperatures.
- Do not attempt to disassemble or modify the adapter.

PRODUCT FEATURES

- **Integrated Protection:** Built-in smart chip provides over-current, over-discharge, short-circuit, and low-voltage protection for battery and devices.
- **Convenient Switch & Indicator:** Features an integrated push-button switch and LED indicator to show

operating mode and alert for low power or overcurrent conditions.

- **High-Quality Construction:** Made with heat-resistant ABS material and premium 12AWG wire for enhanced safety and conductivity.
- **High Current Capacity:** Supports a maximum allowable current of 30A.

NEW UPGRADE

- ✔ Convenient button switch
- ✔ High-current up to 30A
- ✔ Indicator light indication
- ✔ Low-voltage protection
- ✔ Overcurrent protection
- ✔ Over-discharge protection



VS

OLD VERSION

- ✘ Exposed fuses & switches
- ✘ No low-voltage battery protection
- ✘ No overcurrent protection
- ✘ One-time fuse
- ✘ Maximum current 10A

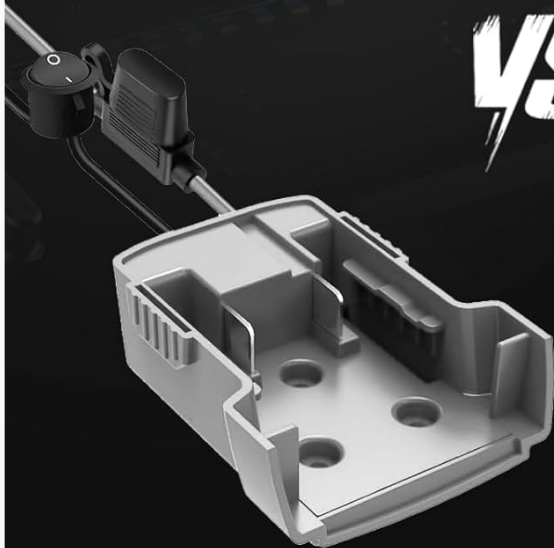
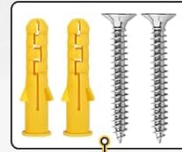


Image: Comparison of the upgraded adapter's features against an older design, emphasizing improved safety and functionality.

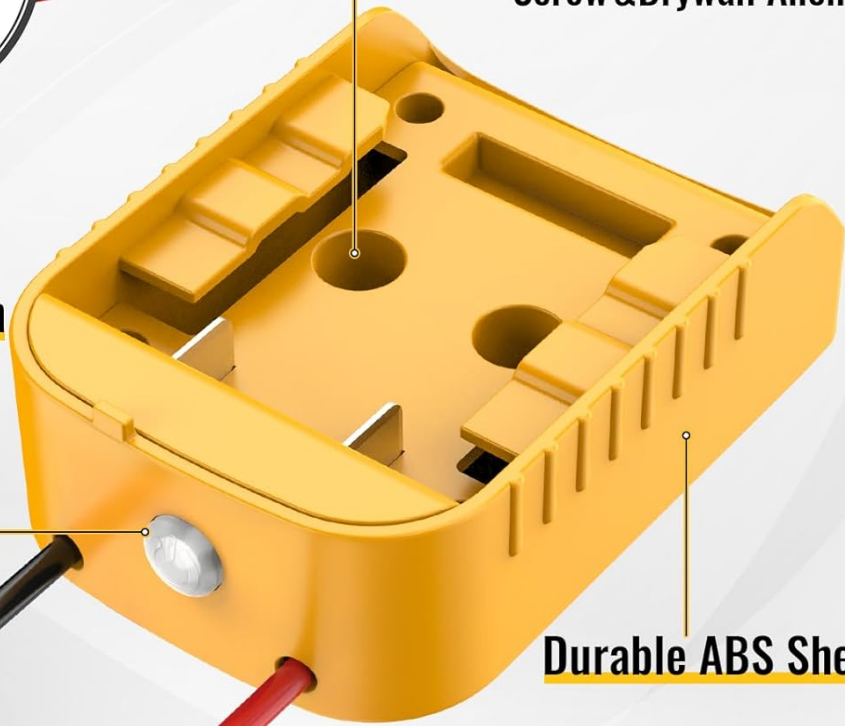


2 Mount Holes



Screw & Drywall Anchors

With Button Switch



Durable ABS Shell

12 AWG Wire

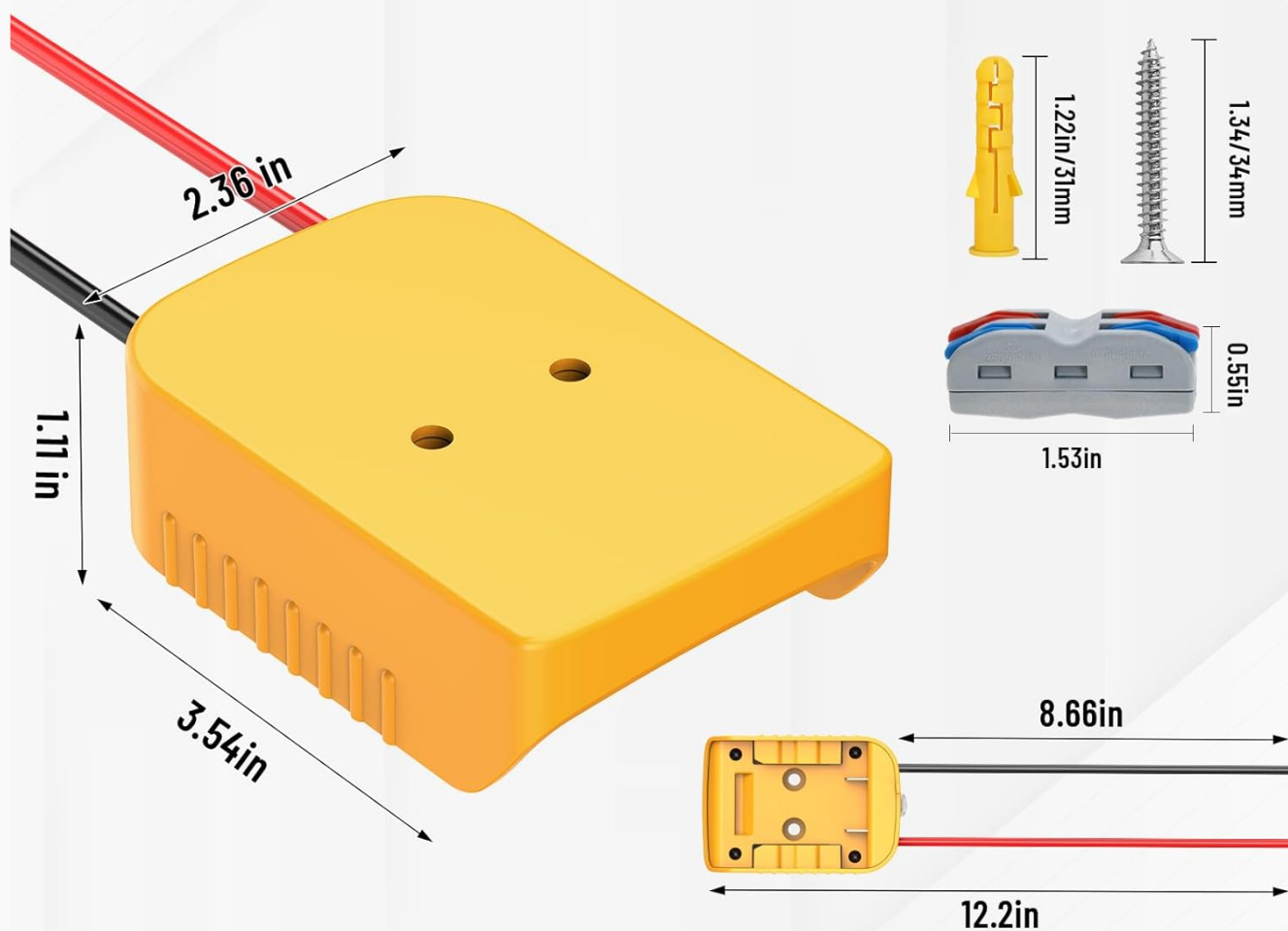


Wire Terminals

Image: Detailed view of the adapter's components, including the button switch, durable ABS shell, 12 AWG wire, and included wire terminals and mounting hardware.

COMPATIBILITY

The Azocak Power Wheel Adapter is compatible with Dewalt 18V/20V Lithium batteries, including models such as DCB205, DCB206, DCB204, DCB203, DCB200, DCB201, and other similar Dewalt 18V/20V Lithium-ion batteries.



Compatible with Dewalt 18V/20V Lithium-ion batteries

such as DCB182,DCB183,DCB200,DCB203,DCB204,DCB205, DCB206 Li-ion batteries and more.

Image: Visual confirmation of compatibility with various Dewalt 18V/20V Lithium-ion battery models.

PACKAGE CONTENTS

- Azocak Power Wheel Adapter (2 units for this package)
- Wire Terminals
- Mounting Screws
- Drywall Anchors

SETUP

1. Connecting Wires

The adapter comes with pre-attached 12AWG red and black wires. Use the provided wire terminals to securely connect these wires to your device's power input. Ensure the **red wire connects to the positive (+) terminal** and the **black wire connects to the negative (-) terminal** of your device.

2. Mounting the Adapter

The adapter includes two mount holes. Use the provided screws and drywall anchors to fix the adapter securely to a surface, if desired, for a stable setup.

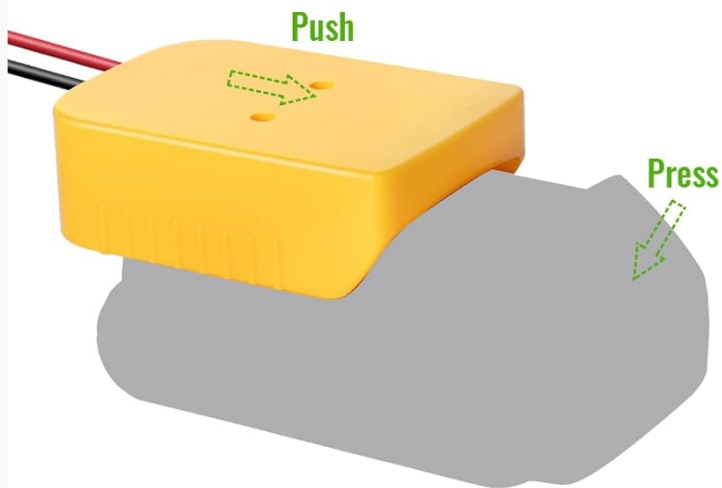
3. Installing the Battery

Before installing the battery, ensure the adapter's power switch is in the **OFF** position. Align the Dewalt 18V/20V battery with the adapter's groove and push it firmly until it locks into place. The adapter connector fits snugly to ensure a secure connection.

4. Removing the Battery

To remove the battery, press down on the buckle located on the battery, then pull the battery out from the adapter.

EASY TO INSTALL AND REMOVE



INSTALL

Move the power adapter to the inside of the groove, then push the converter to lock the battery.

▲ Note: Make sure the adapter switch button is OFF before installing.

REMOVE

Please press down the buckle of the battery, then remove it.



Tips: If the adapter is not used for a long time, remove the battery from the adapter

Image: Step-by-step visual guide for installing and removing a Dewalt battery from the adapter.

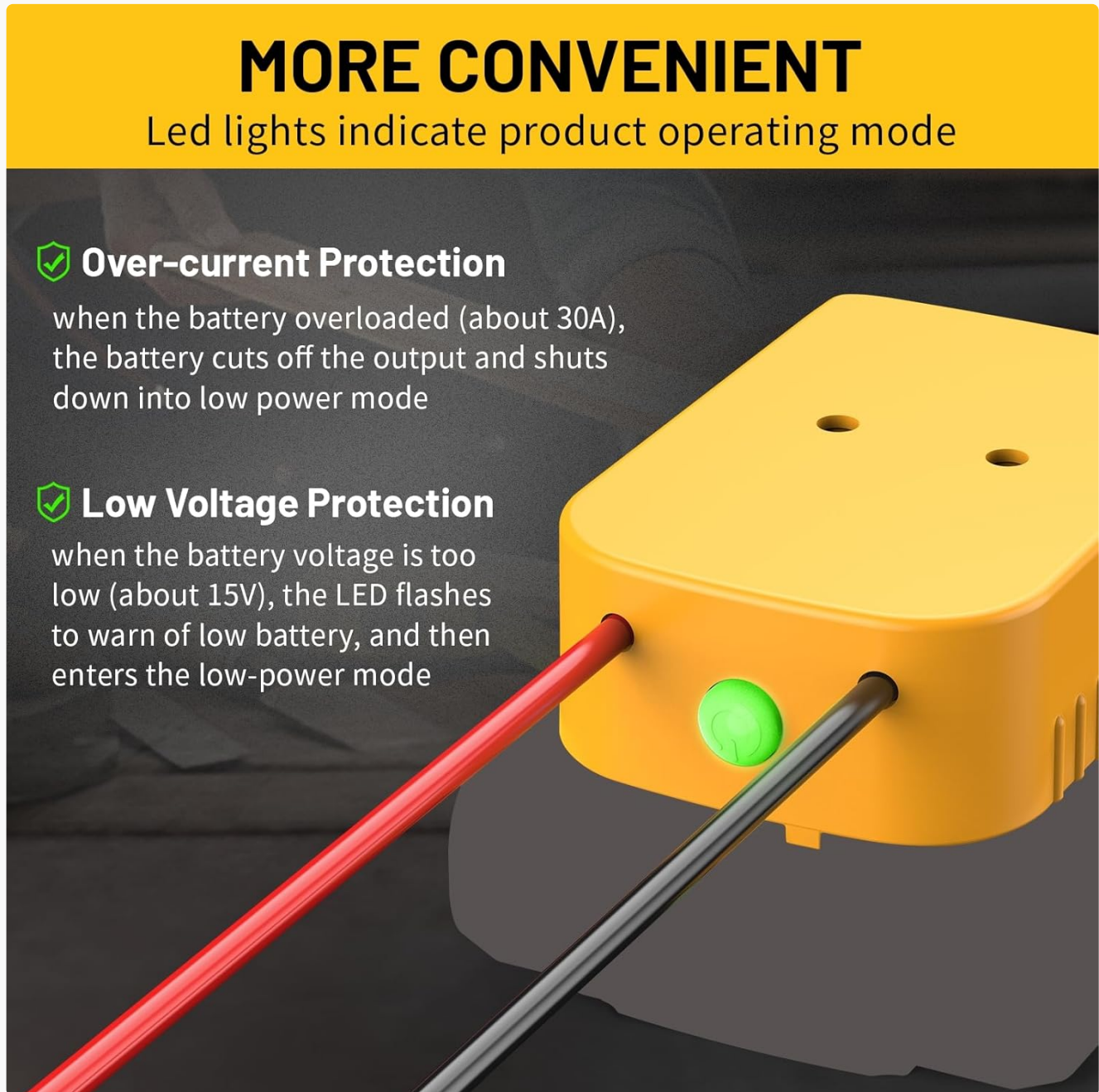
OPERATING INSTRUCTIONS

1. Powering On/Off

Press the integrated push-button switch to turn the adapter ON or OFF. The LED indicator will illuminate when the adapter is powered ON.

2. LED Indicator

- **Solid Green Light:** Indicates the adapter is powered ON and operating normally.
- **Flashing Green Light:** Alerts to a low battery condition (approximately 15V) or an overcurrent event (approximately 30A). The adapter will enter a low-power mode or cut off output to protect the battery and device.



MORE CONVENIENT

Led lights indicate product operating mode

✓ Over-current Protection

when the battery overloaded (about 30A), the battery cuts off the output and shuts down into low power mode

✓ Low Voltage Protection

when the battery voltage is too low (about 15V), the LED flashes to warn of low battery, and then enters the low-power mode

Image: Explanation of the LED indicator's function for over-current and low voltage protection.

MAINTENANCE

- Keep the adapter clean and free from dust and debris. Use a dry cloth for cleaning.
- Store the adapter in a cool, dry place when not in use.
- Always remove the battery from the adapter if it will not be used for a long time to prevent deep discharge and

potential damage to the battery.

TROUBLESHOOTING

No Power Output

- Ensure the battery is fully charged and properly seated in the adapter.
- Verify that the adapter's power switch is ON.
- Check all wire connections for proper polarity and secure contact.

LED Flashing

- A flashing LED indicates either low battery voltage (around 15V) or an overcurrent condition (around 30A).
- If due to low voltage, replace or recharge the battery.
- If due to overcurrent, reduce the load on the device. The adapter will cut off output to protect the battery.

Battery Drains When Adapter is Off

- It is recommended to remove the battery from the adapter when not in use, even if the adapter's switch is off, to prevent gradual discharge of the battery over time.

SPECIFICATIONS

Feature	Detail
Compatible Batteries	Dewalt 18V/20V Lithium-ion (e.g., DCB205, DCB206)
Max Allowable Current	30A
Wire Gauge	12AWG
Material	Heat-resistant ABS
Protection Features	Over-current, Over-discharge, Short-circuit, Low-voltage
Item Weight	6.7 ounces (approx. 0.19 kg)
Package Dimensions	4.41 x 3.62 x 3.19 inches
Connector Type	De-walt proprietary connector



Multi-scene use

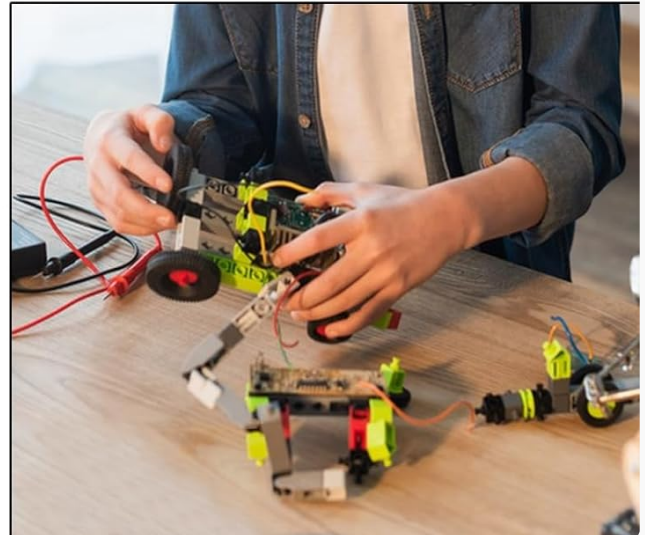


Image: Detailed dimensions of the adapter and its wiring.

WARRANTY AND SUPPORT

For any questions, technical assistance, or warranty claims, please contact Azocek customer support through the retailer where the product was purchased. Please refer to your purchase documentation for specific warranty terms and contact information.