

VIVOHOME VH483

VIVOHOME Airbrush Kit with 1/5 HP Air Compressor - Instruction Manual

Model: VH483

INTRODUCTION

This manual provides detailed instructions for the safe and efficient operation, setup, and maintenance of your VIVOHOME Airbrush Kit. This high-performance airbrush system is designed for a wide range of applications, offering precise control and stable air output. Please read this manual thoroughly before initial use and retain it for future reference.

SAFETY INFORMATION

- Always operate the air compressor in a well-ventilated area.
- Ensure the power supply matches the voltage requirements specified on the compressor.
- Do not operate the compressor near flammable liquids or gases.
- Wear appropriate personal protective equipment, including eye protection and a respirator, when airbrushing.
- Keep children and pets away from the operating area.
- Disconnect the power supply before performing any maintenance or cleaning.
- Never point the airbrush at yourself or others.

PACKAGE CONTENTS

Verify that all components are present and undamaged upon unpacking:

- 1/5 HP Air Compressor
- Dual-Action Airbrush
- Air Hose
- Airbrush Holder (mounted on compressor)
- Air Filter/Moisture Trap
- Pressure Regulator
- User Manual (this document)



Overall view of the VIVOHOME Airbrush Kit, showing the compressor, airbrush, and hose connections.



The 1/5 HP air compressor, featuring a pressure gauge and regulator.



Close-up of the airbrush holder and pressure regulator with moisture trap.

Key Components:

- **Air Compressor:** Provides a consistent and powerful air supply. Features an automatic shut-off if the motor approaches overheating and operates quietly at 47 dB.
- **Dual-Action Airbrush:** Allows for independent control of air and paint flow for fine detail work and broad strokes.
- **Air Filter/Moisture Trap:** Ensures clean and dry air delivery to prevent paint imperfections.
- **Pressure Regulator:** Enables precise adjustment of air pressure for various applications.
- **Airbrush Holder:** Conveniently stores up to two airbrushes on the compressor.

SETUP

1. **Placement:** Place the compressor on a stable, level surface in a well-ventilated area. Ensure adequate space around the unit for air circulation.
2. **Connect Air Hose:** Attach one end of the air hose to the air outlet on the compressor's pressure regulator. Securely tighten the connection.
3. **Connect Airbrush:** Attach the other end of the air hose to the air inlet of your dual-action airbrush. Ensure a tight seal.
4. **Power Connection:** Plug the compressor's power cord into a suitable electrical outlet (220 Volts).
5. **Initial Check:** Turn on the compressor. The pressure gauge should indicate air pressure. Adjust the pressure regulator knob to set the desired working pressure.

OPERATING INSTRUCTIONS

1. Preparing Paint:

- Always thin your paint to the manufacturer's recommended consistency for airbrushing. The consistency should be similar to milk.
- Strain paint to remove any particles that could clog the airbrush nozzle.

2. Filling the Airbrush:

- For gravity-feed airbrushes, pour the prepared paint into the cup on top of the airbrush.

3. Basic Spraying Technique (Dual-Action):

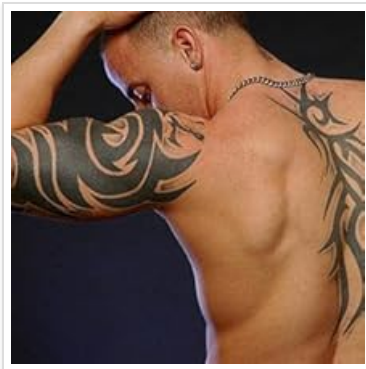
1. Turn on the compressor and set the desired air pressure using the regulator.

2. Hold the airbrush approximately 2-6 inches from the surface, depending on the desired spray pattern.
3. **Initiate Airflow:** Press down on the trigger to release air.
4. **Initiate Paint Flow:** While holding the trigger down, pull it back to release paint. The further back you pull, the more paint is released.
5. Move the airbrush in smooth, even strokes across the surface. Release the paint by pushing the trigger forward before releasing the air by lifting the trigger.

4. Applications:



The airbrush kit is suitable for cake decorating, allowing for fine details and smooth color application.



Create temporary tattoos with precision using the airbrush system.



Customize footwear and other fabric items with unique airbrushed designs.



Achieve intricate nail art designs with the precision of the airbrush.

This airbrush kit is versatile for commercial art, temporary tattoos, sunless tanning, cake decorating, cosmetics, costume makeup, crafts, illustrations, touch-ups, and other airbrushing activities.

MAINTENANCE

1. Airbrush Cleaning:

- After each use, empty any remaining paint from the cup.
- Rinse the cup with appropriate cleaning solution (water for water-based paints, solvent for solvent-based paints).
- Spray the cleaning solution through the airbrush until it sprays clear.
- For thorough cleaning, disassemble the airbrush components (needle, nozzle, cap) and clean them individually with a brush and cleaning solution. Reassemble carefully.

2. Compressor Maintenance:

- **Drain Moisture Trap:** Regularly check and drain any accumulated moisture from the air filter/moisture trap. This prevents water from reaching your airbrush and paint.
- **Keep Clean:** Wipe down the compressor exterior with a damp cloth. Do not use harsh chemicals.
- **Storage:** Store the compressor in a clean, dry environment when not in use.

TROUBLESHOOTING

Problem	Possible Cause	Solution
No air from airbrush	Compressor off; hose disconnected; airbrush clogged	Check power; reconnect hose; clean airbrush nozzle/needle
Paint sputtering or inconsistent spray	Paint too thick; clogged nozzle; moisture in air line; low air pressure	Thin paint; clean airbrush; drain moisture trap; increase air pressure
Airbrush leaks paint	Damaged nozzle/needle; loose components	Inspect and replace damaged parts; tighten all connections
Compressor not turning on	No power; faulty switch	Check power outlet/cord; contact support if switch is faulty

SPECIFICATIONS

Brand:	VIVOHOME
Model Number:	VH483
Product Dimensions (L x W x H):	19.6 x 9.9 x 16 cm; 4.2 kilograms
Color:	Grey (without air tank)
Material:	Aluminum
Power Source:	Corded Electric
Voltage:	220 Volts
Air Flow Capacity:	25 Liters per minute
Noise Level:	47 Decibels
Special Feature:	Quiet operation
Recommended Uses:	Airbrushing
Country of Origin:	China

WARRANTY AND SUPPORT

VIVOHOME products are manufactured to high-quality standards. For warranty information or technical support, please refer to the contact details provided with your purchase documentation or visit the official VIVOHOME website. Please have your model number (VH483) and purchase date available when contacting support.