

[Manuals.plus](#) /

› [Veement](#) /

› Veement V200Pro 2.5K Car Dash Cam User Manual

## Veement Veement-V200Pro

# Veement V200Pro 2.5K Car Dash Cam User Manual

Your comprehensive guide to setting up, operating, and maintaining your Veement V200Pro Dash Cam.

## WHAT'S IN THE BOX

- 1x V200Pro Dash Cam
- 1x Car Charger (11.5ft)
- 2x Electrostatic Sticker + 1x Spare 3M Adhesive Pad
- 1x User Manual + 1x Installation Guide
- 1x Easy Pry Tool

# RECOMMENDED HARDWARE KIT

V200Pro support 24 hours recording only when it is connected to a USB hardware kit (not included in the package).

Please go to amazon.com search **B0D93L49TD**



Image: All components included in the Veement V200Pro Dash Cam package.

## KNOW YOUR DASH CAMERA

The Veement V200Pro is a compact and discreet dash camera designed for optimal road safety. Familiarize yourself with its key features and components:

- **Front Camera:** Captures 2.5K (2560\*1440P) video with a 160° wide-angle lens.
- **1.47" Display:** Provides a clear view for reviewing recordings directly on the device.
- **USB-C Port:** For connecting the car charger.
- **Memory Card Slot:** Supports up to 256GB Micro SD card (U1 grade or higher recommended).
- **Power Button:** Used for powering on/off and locking video files.
- **Speaker:** For audio feedback and playback.



Image: The Veement V200Pro Dash Cam and its accompanying mobile application interface.

# 2.5K@30FPS DASH CAM

Clearly record license plate numbers, road signs and road conditions.

2.5K

2.5K QHD



6 Layer Glass



170° Wide Angle

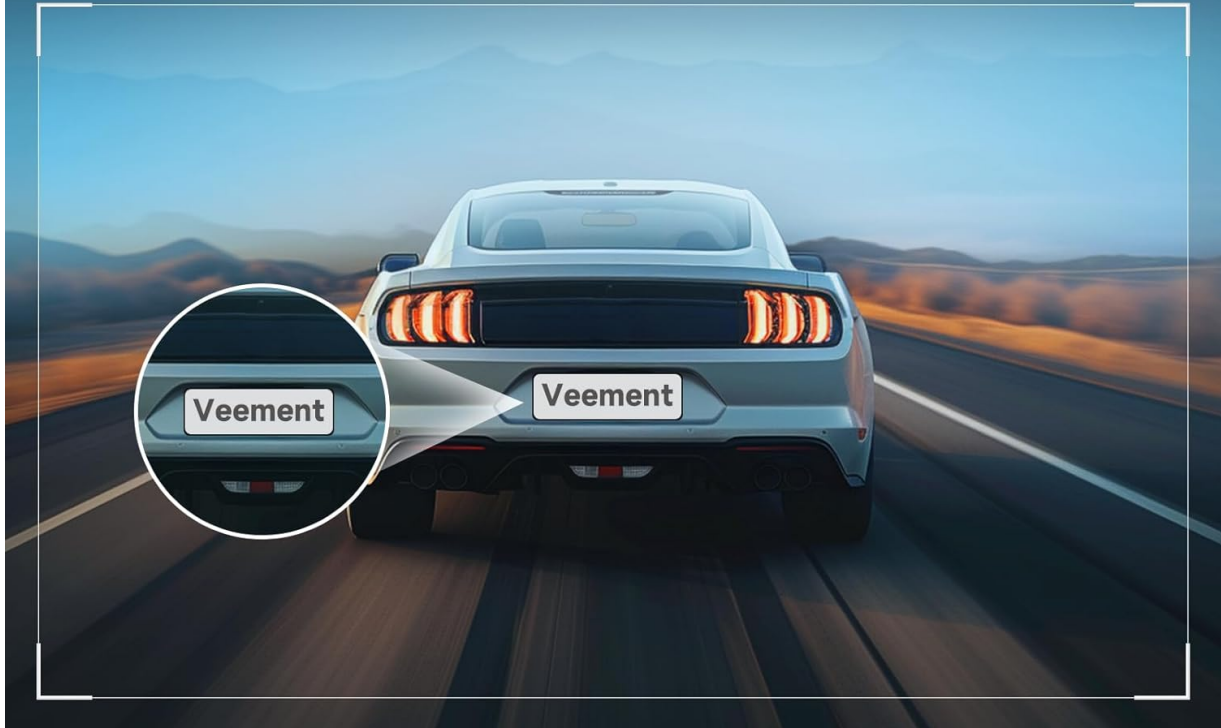


Image: A detailed side view of the dash cam, highlighting its slim profile.

# 2.4G WIFI APP CONTROL

Support real time preview, convenient to download and share videos with family or friends through social platforms.



Image: Close-up of the dash cam's various ports and control buttons.

## SETUP

### Installation Instructions

- 1. Prepare for Installation:** Stop the engine of your vehicle. Find an ideal location on the front windshield, typically near the rearview mirror, that does not obstruct your view. Clean the windshield thoroughly to ensure proper adhesion.
- 2. Attach Electrostatic Sticker:** Peel off the electrostatic sticker and apply it to the cleaned windshield. This sticker provides a clean surface for the adhesive pad and makes removal easier.
- 3. Mount Dash Cam:** Peel off the 3M adhesive pad from the dash cam's mount and firmly press the dash cam onto the electrostatic sticker. Ensure it is securely attached.
- 4. Connect Power:** Connect the provided car charger to the USB-C port on the dash cam. Route the cable neatly along the windshield edge and down to your vehicle's 12V power outlet. Use the included pry tool to tuck the cable under trim for a clean installation.
- 5. Insert Memory Card:** Insert a U1 grade or higher Micro SD card (up to 256GB, not included) into the memory card slot. The dash cam will prompt you to format the card upon first use.

# RECOMMENDED **SD** CARD

Max Support 256GB Micro SD Card. For getting smooth recording video, we recommend **Class 10, U1** Speed Micro-SD memory card.



**SD card is NOT included in the packaging.**

Image: Inserting a Micro SD card into the dash cam's dedicated slot.

## App Setup

6. **Download the App:** Scan the QR code provided in the installation guide or user manual to download the official Veement app (VeeCar) for your iOS or Android smartphone.
7. **Connect via Wi-Fi:** Open the app and follow the on-screen instructions to connect to the dash cam's built-in 2.4G Wi-Fi network. The Wi-Fi name and default password can be found in the manual.
8. **Access Camera:** Once connected, you can access the live view, manage recordings, and adjust camera settings directly from your smartphone.

# SUPER NIGHT VISION

With F1.6 large aperture, 6-Glass lens enhances the recording night vision in low light environment.




Image: The mobile app interface for controlling and managing the dash cam.

## OPERATING

### Recording Modes & Features


- **Loop Recording:** When the memory card reaches its storage limit, new recordings will automatically overwrite the oldest recordings, ensuring continuous operation without manual intervention.
- **G-Sensor:** The built-in G-Sensor automatically detects sudden shakes or collisions. When triggered, it locks the current footage to prevent it from being overwritten, securing critical evidence.
- **24 Hours Parking Monitor:** With an optional hardwire kit (ASIN: B0D93L49TD), the parking monitor activates automatically and records emergency videos upon detecting impacts or motion, protecting your vehicle 24/7.
- **Super Night Vision:** Equipped with an ultra-large F1.6 aperture and 6-layer glass lens, the dash cam increases light intake by 60%. WDR (Wide Dynamic Range) technology balances exposure in dark scenarios, ensuring clear and sharp footage even at night.
- **Wi-Fi & APP Control:** Use the dedicated app to view and manage recordings instantly on your smartphone. You can download and share videos with ease.



### G-SENSOR

Automatically detects sudden vibrations /collisions and locks the lens to prevent the video from being overwritten even during loop recording.


---



### LOOP RECORDING

Create new video clip,and automatically overwrite the oldest footages to save the current files when the card is full. (Supports up to 256G)

---



### 24H PARKING MODE

Auto switch to Parking Mode and start to record instantly,providing 24H protection for your car. NOTE:The Hardwire kit is required for this function.

Image: Visual representation of the G-Sensor, Loop Recording, and 24-hour Parking Mode functionalities.

## Product Feature Video

Video: An official overview of the Veement V200Pro 2.5K Dash Cam's features and display.

## MAINTENANCE

- **Clean the Lens:** Regularly clean the camera lens with a soft, lint-free cloth to ensure clear recording quality.
- **Format SD Card:** It is recommended to format the Micro SD card regularly (e.g., once a month) to maintain optimal recording performance and prevent data corruption.
- **Temperature Considerations:** The dash cam is designed to operate in a wide temperature range (-40°F to 185°F). Avoid prolonged exposure to extreme temperatures outside this range when the vehicle is parked.

## TROUBLESHOOTING

Issue	Possible Solution
-------	-------------------

Issue	Possible Solution
Dash cam not powering on.	Ensure the car charger is properly connected to the dash cam and the vehicle's 12V outlet. Check the vehicle's power outlet for functionality.
Cannot connect to the app via Wi-Fi.	Ensure the dash cam's Wi-Fi is enabled. Verify you are connecting to the correct Wi-Fi network (V200Pro_XXXX). Note that connection may not be possible when using wireless CarPlay or Android Auto. Try restarting both the dash cam and your smartphone.
Poor recording quality.	Ensure the lens is clean. Use a U1 grade or higher Micro SD card. Format the SD card regularly. Check for firmware updates.
Recordings are not saving or are being overwritten.	Ensure a Micro SD card is inserted and properly formatted. Check the loop recording settings in the app. If G-Sensor is triggered, the file should be locked and not overwritten.
Parking monitor not working.	The 24-hour parking monitor requires a hardwire kit (ASIN: B0D93L49TD) for continuous power. Ensure the hardwire kit is correctly installed.

## SPECIFICATIONS

Feature	Detail
Product Dimensions	1.2 x 3.6 x 1.8 inches
Item Weight	8.4 ounces
Model Name	V200Pro
Video Capture Resolution	1440p (2.5K QHD)
Wide Angle	160°
Aperture	F1.6
Lens	6-layer glass lens
Special Features	G-Sensor, WDR Night Vision, 24/7 Parking Monitor (with hardwire kit), Loop Recording
Connectivity Technology	Wi-Fi (2.4G)
Display Size	1.47 inches
Operating Temperature	-40°F to 185°F
Storage	Supports up to 256GB Micro SD (U1 grade or higher)

## WARRANTY AND SUPPORT

For warranty information, technical support, or any inquiries regarding your Veement V200Pro Dash Cam, please refer to the contact details provided in your product packaging or visit the official Veement website.

Always ensure you are using genuine accessories and following the instructions in this manual to maintain product validity and performance.