



[Manuals.plus](#) /

› [Merax](#) /

› Merax Hardshell Luggage Set Instruction Manual

Merax 01

Merax Hardshell Luggage Set Instruction Manual

Models: 20", 24", 28" Suitcases

1. INTRODUCTION

Thank you for choosing the Merax Hardshell Luggage Set. This set includes 20-inch, 24-inch, and 28-inch suitcases designed for durability and ease of travel. Each piece features spinner wheels, a telescopic handle, and a TSA-approved lock. This manual provides essential information for the proper setup, operation, and maintenance of your luggage.



Image 1.1: Merax Hardshell Luggage Set (20", 24", 28") in purple and pink gradient.



Image 1.2: A person effortlessly pulling a Merax suitcase, highlighting its travel-friendly design.

2. PRODUCT FEATURES

- **Durable Hardshell Construction:** Made from high-quality PC materials, providing robust protection for your belongings.

- **Expandable Design:** The 24-inch and 28-inch suitcases feature an expandable zipper, offering up to 25% more packing space.
- **TSA Combination Lock:** Side-mounted lock which allows TSA agents to inspect luggage without damage, enhancing security and privacy.
- **360° Spinner Wheels:** Four multi-directional spinner wheels ensure smooth, effortless mobility in any direction.
- **Adjustable Telescopic Handle:** A 3-stage adjustable handle system accommodates users of different heights for comfortable maneuvering.
- **Organized Interior:** Full-zip interior divider, cross straps, and a small pouch help keep contents secure and organized.

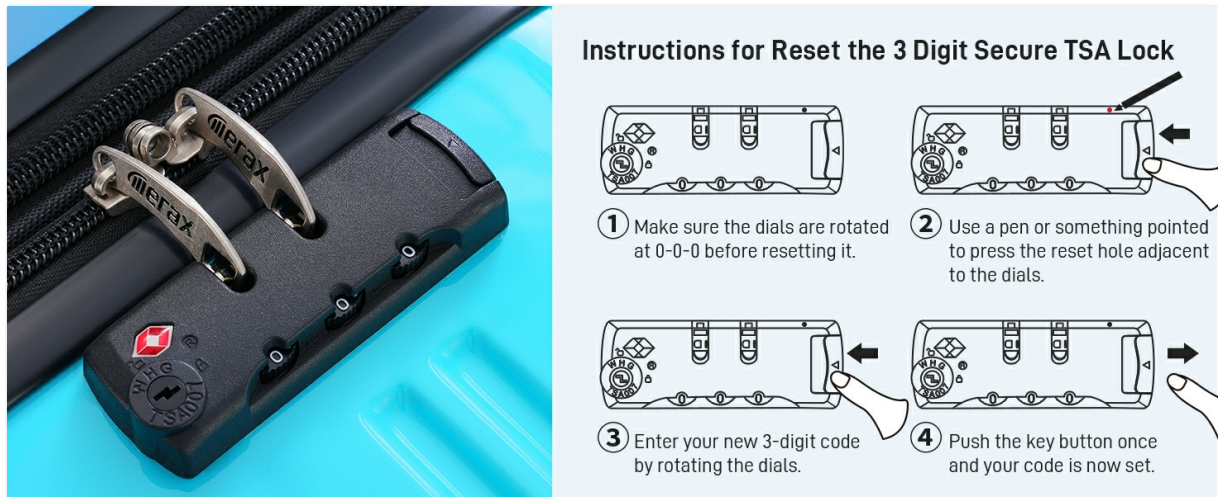


Image 2.1: Detailed view of reinforced grip handles, sturdy telescopic handle, and protective side bumper feet.



Image 2.2: Illustration of the expandable feature on the 24" and 28" suitcases, providing additional packing capacity.

Fashion Design, Smart Function



Durable Quality and Affordable.



Image 2.3: Overview of quality assurance tests, including drop, shock, and fatigue tests, ensuring product durability.

3. SETUP INSTRUCTIONS

3.1 Initial Preparation

- **Protective Film:** Your luggage may come with a clear protective film. This film can be removed before use to reveal the full finish of the hardshell.
- **Unpacking:** The smaller suitcases are designed to fit inside the larger ones for shipping and storage. Carefully unpack all pieces.

3.2 Setting the TSA Combination Lock

The luggage is equipped with a 3-digit TSA-approved combination lock. The default combination is 0-0-0.

1. Ensure the lock is set to the default combination (0-0-0).
2. Locate the small reset button, usually on the side or bottom of the lock. Use a pen or a pointed object to press and hold this button.
3. While holding the reset button, set your desired 3-digit combination by rotating the dials.
4. Release the reset button. Your new combination is now set. Test the new combination to ensure it works correctly before scrambling the dials.



Image 3.1: Visual guide for resetting and setting your personal 3-digit TSA combination lock.

4. OPERATING INSTRUCTIONS

4.1 Using the Telescopic Handle

The telescopic handle has multiple locking positions to adjust to your preferred height. Press the button on top of the handle to extend or retract it. Ensure it clicks into place at your desired height before moving the luggage.

4.2 Maneuvering with Spinner Wheels

The 360° spinner wheels allow for smooth movement in any direction. For optimal performance, push the luggage upright on all four wheels. This reduces strain on your arm and allows for easy navigation through crowded areas.

Your browser does not support the video tag.

Video 4.1: Demonstration of the smooth 360-degree spinner wheels in action.

4.3 Utilizing the Expandable Feature (24" & 28" models only)

To expand the 24-inch and 28-inch suitcases, locate the secondary zipper running along the perimeter of the luggage. Unzip this section to increase the packing depth by approximately 25%. Zip it back up to return to the standard size.

Your browser does not support the video tag.

Video 4.2: Visual guide on how to use the expandable feature for increased packing capacity.

4.4 Internal Organization

The interior features a full-zip divider to separate compartments, and adjustable cross straps to secure your packed items. A small pouch is included for smaller essentials like toiletries or accessories.



Image 4.1: The organized interior with a zippered divider and compression straps for efficient packing.

5. MAINTENANCE

- **Cleaning the Hardshell:** Wipe the exterior with a soft, damp cloth and mild soap. Avoid abrasive cleaners or solvents.
- **Wheel Care:** Periodically check wheels for debris. Clean with a damp cloth. Avoid excessive force or dragging over rough surfaces.
- **Zipper Maintenance:** Keep zippers free of dirt and debris. If a zipper becomes stiff, apply a small amount of zipper lubricant or wax.
- **Storage:** Store luggage in a cool, dry place away from direct sunlight. The smaller suitcases can be nested inside the larger ones for compact storage.

6. TROUBLESHOOTING

- **Lock Not Opening:** Ensure you are using the correct 3-digit combination. If forgotten, you may need to try combinations or contact Merax support for guidance. TSA agents can open the lock without the combination.
- **Stuck Telescopic Handle:** Check for any obstructions in the handle mechanism. Ensure the release button is fully pressed when extending or retracting.
- **Wheels Not Rolling Smoothly:** Inspect wheels for tangled hair, lint, or other debris. Clean thoroughly. Avoid overloading the suitcase, which can strain the wheels.
- **Zipper Issues:** If a zipper snags, gently pull the fabric away from the zipper teeth and try to move the slider. Do not force it.

7. SPECIFICATIONS

Merax Hardshell Luggage Set Dimensions and Weight

Size	Dimensions (including wheels)	Handle Height (extended)	Weight	Recommended Travel Days
20-inch	20.5" x 12.8" x 8"	19"	6 lbs	1-4 days
24-inch	24.5" x 15.8" x 10.2"	15"	8 lbs	4-7 days
28-inch	28.5" x 17.9" x 11.6"	11"	10 lbs	7-9 days

Note: There may be a deviation of 0.8-1.2 inches due to different measurement methods.

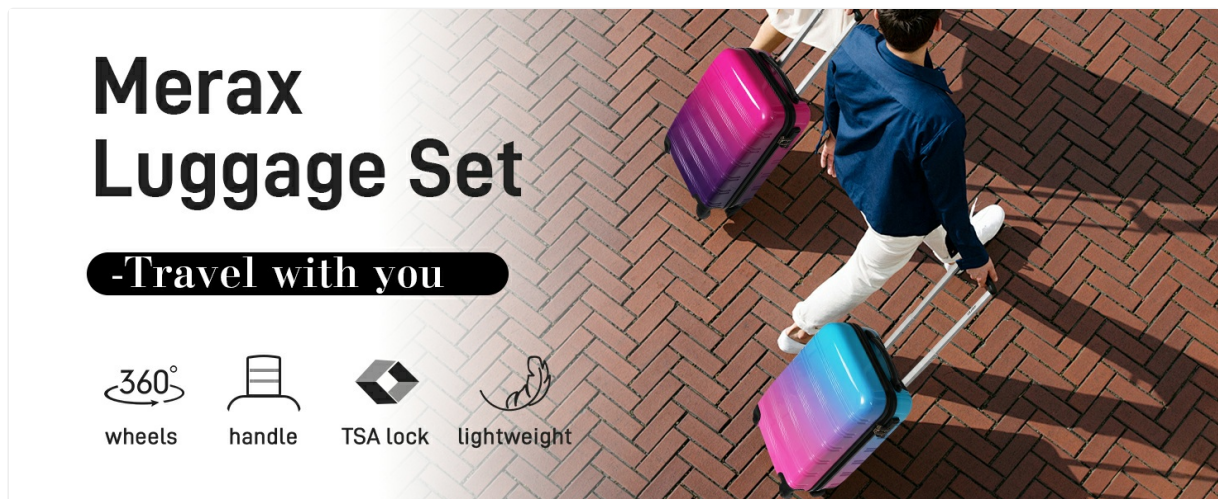


Image 7.1: Visual representation of luggage sizes, including dimensions, weight, and recommended travel duration.

- **Model Number:** 01
- **Material:** PC Hardshell
- **Department:** Unisex Adult
- **Manufacturer:** Merax

8. WARRANTY AND SUPPORT

For warranty information, product support, or to inquire about replacement parts, please refer to the official

Merax website or contact Merax customer service directly. Keep your purchase receipt for warranty claims.

Merax Official Website: [Visit Merax Store on Amazon](#)