

## Manuals+

[Q & A](#) | [Deep Search](#) | [Upload](#)

manuals.plus /

› [DORTALA](#) /

› [DORTALA 4" 10FT Mini Split Line Set Cover Instruction Manual](#)

## DORTALA DOUS-AW10037

# DORTALA 4" 10FT Mini Split Line Set Cover Instruction Manual

Model: DOUS-AW10037 | Brand: DORTALA

## 1. PRODUCT OVERVIEW

The DORTALA 4" 10FT Mini Split Line Set Cover kit is designed to protect and conceal the refrigerant lines, electrical cables, and drain hoses of ductless mini split AC units, central AC systems, and heat pump systems. This kit enhances the aesthetic appearance of your home's exterior by providing a neat and organized solution for exposed lines. Constructed from durable PVC material, it offers resistance to various weather conditions and can be painted to match your exterior walls.

## 2. PRODUCT COMPONENTS

The DORTALA line set cover kit includes a comprehensive set of accessories to facilitate flexible installation and configuration. The components are designed to be combined as needed for various setups.

# Complete Accessories

Allow you to combine different accessories for flexible use



**Figure 2.1: Complete Accessories.** This image displays all the components included in the DORTALA Mini Split Line Set Cover kit. It shows an Inside/Outside Corner, Tee, Coupling, Wall Cap, 90° Elbow, 45° Elbow, Inlet, two Straight Duct Covers, a Flexible Duct Cover, and a Screw Kit. These parts allow for various configurations to cover AC lines effectively.

The kit typically includes:

- **Straight Duct Covers:** 39.5" x 2.7" x 4" (100 cm x 6.8 cm x 10.3 cm) sections for linear runs.
- **Flexible Duct Cover:** 28.3" x 3.6" x 2.5" (72 cm x 9.1 cm x 6.3 cm) for bends and irregular paths.
- **Inside/Outside Corner:** 4.6" x 4.6" x 4.1" (11.7 cm x 11.7 cm x 10.6 cm) for directional changes.
- **90° Elbow:** 5.4" x 5.4" x 4.3" (13.6 cm x 13.6 cm x 10.8 cm) for sharp turns.
- **45° Elbow:** 4.1" x 4.1" x 3" (10.5 cm x 10.5 cm x 7.5 cm) for gradual turns.
- **Tee:** 6.5" x 5.4" (16.5 cm x 13.8 cm) for branching lines.
- **Wall Cover:** 8.5" x 5.3" x 3.3" (21.4 cm x 13.4 cm x 8.5 cm) for covering wall penetrations.
- **Inlet:** 5.6" x 5.1" (14.4 cm x 13 cm) for connecting to the AC unit.
- **Connector:** 4.3" x 2" x 2.9" (11 cm x 5.2 cm x 7.4 cm) for joining straight ducts.
- **Screw Kit:** Fasteners for securing the covers.

### 3. KEY FEATURES

- **Superior PVC Material:** Crafted from premium PVC, ensuring durability, weather resistance, heat resistance (up to 140°F/60°C), cold resistance (down to -40°F/-40°C), UL94-V0 flame resistance, and aging resistance for long-term outdoor use.
- **Universal Application:** Designed with 4" (10.3 cm) wide straight duct covers, suitable for most split and central air conditioners with capacities ranging from 7000 BTU to 24000 BTU.
- **Customizable Design:** Straight ducts can be cut to desired lengths, and the entire system is paintable to match your home's exterior color.
- **Neat Appearance:** Effectively conceals unsightly AC pipes and cords, contributing to a clean and organized external wall.



**Figure 3.1: Premium PVC Material.** This image demonstrates the robust properties of the PVC material used for the line set cover, including its resistance to flame, heat, weather, and aging, with specified temperature ranges.

### 4. SETUP AND INSTALLATION

The DORTALA line set cover offers various installation methods to accommodate different wall structures and AC unit placements. Always ensure the AC unit is powered off before beginning installation.

## 4.1 General Installation Guidelines

1. **Plan the Route:** Determine the optimal path for the line set cover from the AC unit to the wall penetration point, considering the location of the outdoor unit and the indoor unit's line set exit.
2. **Measure and Cut:** Measure the required lengths for straight ducts. Use a suitable cutting tool to trim straight ducts to size if necessary.
3. **Assemble Components:** Connect the various duct sections, elbows, tees, and corners as per your planned route. Ensure all connections are secure.
4. **Secure to Wall:** Use the provided screw kit to attach the assembled line set cover sections to the exterior wall. Pre-drill pilot holes if required for your wall material.
5. **Install Wall Cap and Inlet:** Position the wall cap over the line set entry point into the building and secure it. Attach the inlet near the outdoor AC unit to guide the line set into the cover.
6. **Conceal Lines:** Place the AC lines, cables, and hoses inside the assembled cover sections.
7. **Close Covers:** Snap or secure the cover lids onto the base sections.

## 4.2 Installation Methods

The kit supports the following common installation configurations:

# Different Installation Methods

## Horizontal Installation

Suitable for 1HP to 30HP dual zone mini split air conditioners



## Basic Installation

Ideal for 1HP to 30HP mini split air conditioners

## Vertical Installation

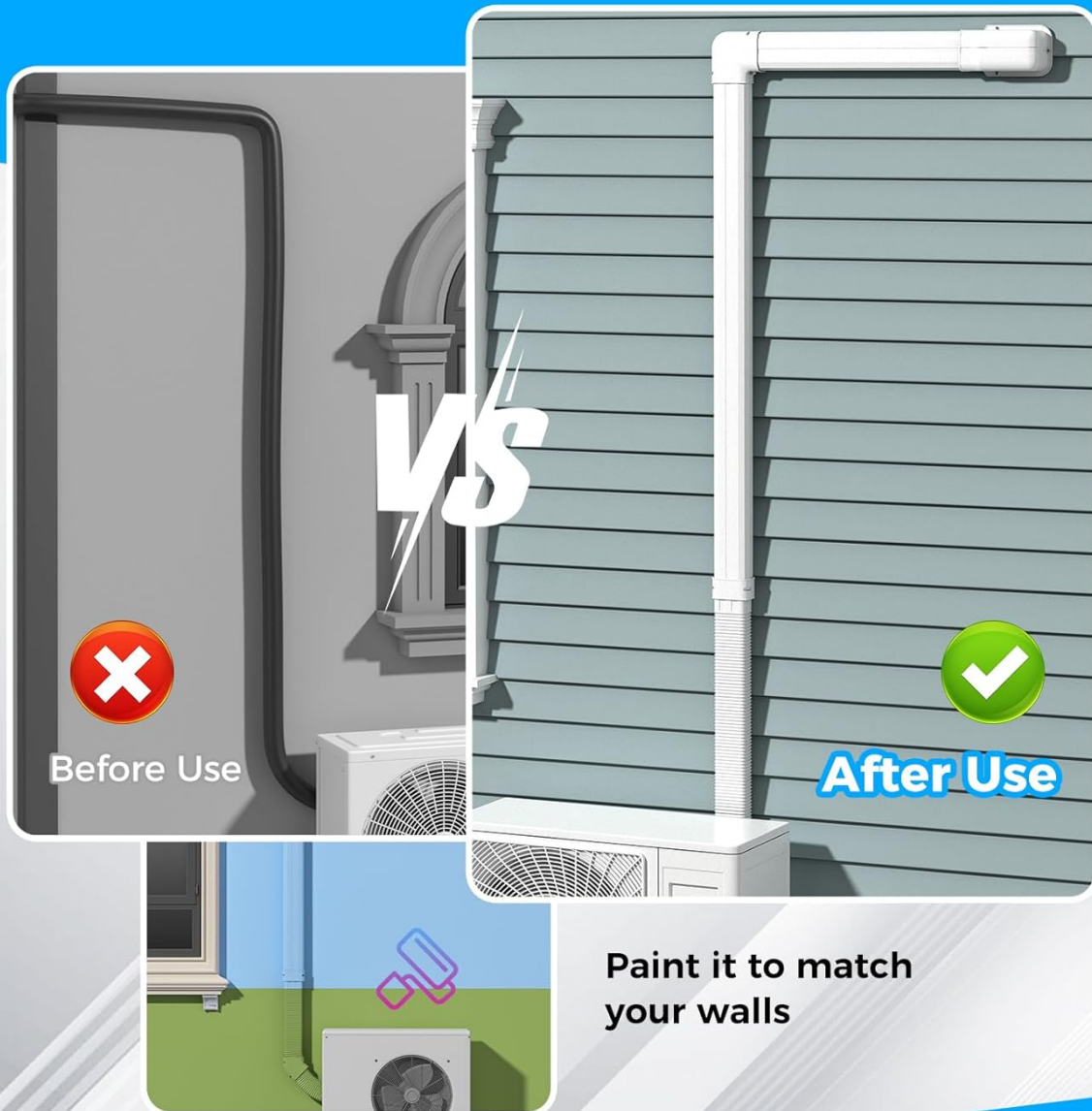
Perfect for walls of different thicknesses



**Figure 4.1: Different Installation Methods.** This image depicts horizontal installation (suitable for 1HP to 30HP dual zone mini split ACs), basic installation (ideal for 1HP to 30HP mini split ACs), and vertical installation (perfect for walls of different thicknesses).

- **Horizontal Installation:** Suitable for dual zone mini split air conditioners (1HP to 30HP) where lines run horizontally along the wall.
- **Basic Installation:** Ideal for standard mini split air conditioners (1HP to 30HP) with a direct vertical run from the unit.
- **Vertical Installation:** Perfect for accommodating walls of varying thicknesses, allowing for a clean vertical descent or ascent.

# Keep External Walls Neat



**Figure 4.2: Keep External Walls Neat.** This image illustrates the aesthetic improvement achieved by installing the line set cover, transforming an untidy exterior with exposed lines into a clean and organized appearance. It also highlights the paintable feature.

## 5. MAINTENANCE

The DORTALA Mini Split Line Set Cover requires minimal maintenance due to its durable PVC construction.

- **Cleaning:** Periodically wipe down the exterior of the cover with a damp cloth to remove dust, dirt, or grime. For stubborn stains, a mild soap solution can be used. Avoid abrasive cleaners.
- **Inspection:** Annually inspect the cover for any signs of damage, cracks, or loose connections. Ensure all sections remain securely fastened to the wall.
- **Painting:** If you choose to paint the cover to match your home, ensure the surface is clean and dry before applying exterior-grade paint. Follow the paint manufacturer's instructions for best results.

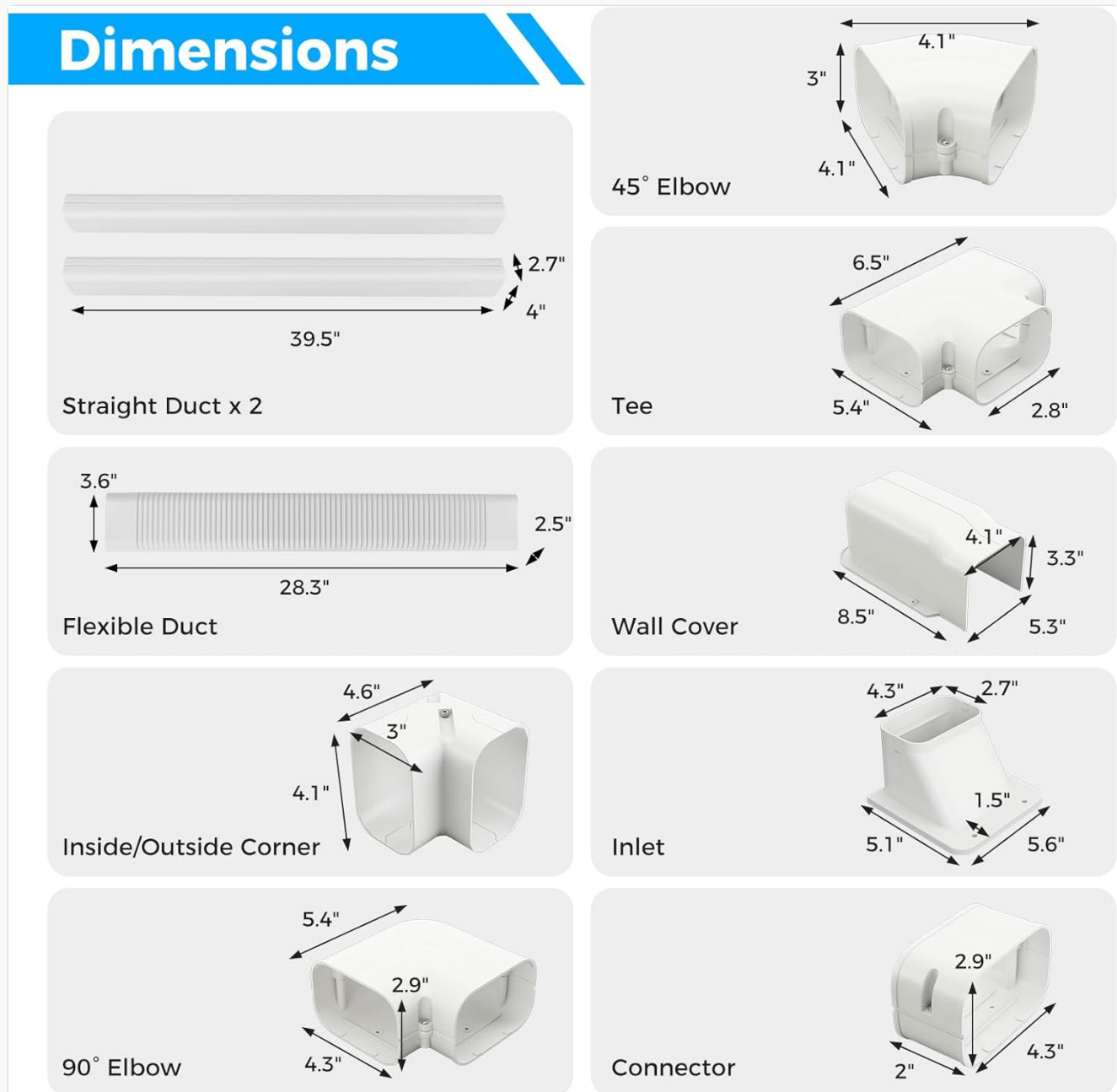
## 6. TROUBLESHOOTING

While the line set cover is a passive component, here are some common considerations:

- **Loose Sections:** If any section of the cover becomes loose, re-secure it to the wall using appropriate fasteners. Ensure the screws are properly anchored.
- **Difficulty Closing:** If covers are difficult to close, check for any obstructions inside the duct, such as improperly routed lines or debris. Ensure the sections are aligned correctly.
- **Paint Peeling/Fading:** If painted, ensure proper surface preparation and use of high-quality exterior paint. Reapply paint as needed following manufacturer guidelines.
- **Water Accumulation:** Ensure proper drainage for the AC unit's condensate line. The line set cover itself is designed to protect lines, not to manage water flow from the AC unit.

## 7. SPECIFICATIONS

Detailed dimensions and material specifications for the DORTALA Mini Split Line Set Cover:



**Figure 7.1: Dimensions.** This image provides a visual representation of the dimensions for each individual component of the line set cover kit, aiding in planning and installation.

## Product Specifications

Feature	Detail
Material	Premium PVC
Color	White (Paintable)
Straight Duct Dimensions (L x W x H)	39.5" x 2.7" x 4" (100 cm x 6.8 cm x 10.3 cm)
Flexible Duct Dimensions (L x W x H)	28.3" x 3.6" x 2.5" (72 cm x 9.1 cm x 6.3 cm)
Inside/Outside Corner Dimensions (L x W x H)	4.6" x 4.6" x 4.1" (11.7 cm x 11.7 cm x 10.6 cm)
90° Elbow Dimensions (L x W x H)	5.4" x 5.4" x 4.3" (13.6 cm x 13.6 cm x 10.8 cm)
45° Elbow Dimensions (L x W x H)	4.1" x 4.1" x 3" (10.5 cm x 10.5 cm x 7.5 cm)
Tee Dimensions (L x W)	6.5" x 5.4" (16.5 cm x 13.8 cm)
Wall Cover Dimensions (L x W x H)	8.5" x 5.3" x 3.3" (21.4 cm x 13.4 cm x 8.5 cm)
Inlet Dimensions (L x W)	5.6" x 5.1" (14.4 cm x 13 cm)
Connector Dimensions (L x W x H)	4.3" x 2" x 2.9" (11 cm x 5.2 cm x 7.4 cm)
Total Net Weight	6.2 lbs (2.8 kg)
Operating Temperature Range	-40°F to 140°F (-40°C to 60°C)
Compatibility	7000 BTU - 24000 BTU AC units

## 8. WARRANTY AND SUPPORT

Specific warranty information for the DORTALA 4" 10FT Mini Split Line Set Cover is not provided in this manual. For details regarding warranty coverage, returns, or technical support, please refer to the product packaging or contact DORTALA customer service directly through their official website or the retailer where the product was purchased.

© 2023 DORTALA. All rights reserved.

This manual is for informational purposes only. DORTALA reserves the right to make changes to product specifications without prior notice.