

Kenmore 2296833

Kenmore 22-96833 Electric Range Stove User Manual

Model: 2296833

Brand: Kenmore

INTRODUCTION

This manual provides essential instructions for the safe and efficient operation, installation, and maintenance of your Kenmore 22-96833 5.6 cu. ft. Front-Control Electric Range Stove. Please read all instructions carefully before using the appliance to ensure proper function and to prevent injury or damage.

IMPORTANT SAFETY INSTRUCTIONS

WARNING: To reduce the risk of fire, electric shock, injury to persons, or damage when using the appliance, follow basic precautions, including the following:

- Read all instructions before using the appliance.
- Ensure proper installation and grounding by a qualified installer.
- Do not repair or replace any part of the appliance unless specifically recommended in this manual. All other servicing should be referred to a qualified technician.
- Keep flammable materials away from the appliance.
- Never use the appliance for warming or heating the room.
- Do not leave children unattended near the appliance.
- Always use dry potholders. Moist or damp potholders on hot surfaces may result in burns from steam.
- Do not heat unopened food containers. Pressure build-up may cause the container to burst and result in injury.
- Always ensure the anti-tip device is properly installed and engaged.

SETUP AND INSTALLATION

Proper installation is crucial for the safe and efficient operation of your electric range. It is recommended that installation be performed by a qualified technician.

Tools Required

- Phillips screwdriver

- Pliers
- 3/4 inch nut driver
- Drill
- Adjustable wrench
- Level

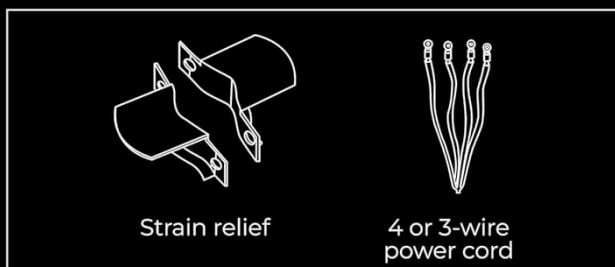
Parts Needed (Not Included)

- Strain relief
- 4 or 3-wire power cord

Tools Required:

- Phillips screwdriver
- 1/4 in. nut driver
- Adjustable wrench
- Pliers
- Drill
- Level

Parts Needed:



Parts Included:



Image Description: This image displays the tools required for installation, including a Phillips screwdriver, pliers, 3/4 inch nut driver, drill, adjustable wrench, and level. It also shows parts needed but not included: a strain relief and a 4 or 3-wire power cord. Additionally, it lists parts included: two oven racks, an anti-tip device, two back plastic pads with ST5*20mm screws, and a user guide.

Parts Included

- Oven racks (2)

- Anti-tip device
- Back plastic pads (2) with ST5*20mm screws (2)
- User guide (this document)

Dimensions and Placement

Ensure adequate space for installation. The range measures approximately 29.9 inches wide, 36 inches high, and 25 inches deep. Refer to the diagram for specific burner sizes and overall dimensions.



Image Description: This diagram illustrates the dimensions of the Kenmore electric range. It shows a width of 29.9 inches, a height of 36 inches, and a depth of 25 inches. The oven has a 5.6 cubic foot capacity. The back burners are 5.9 inches and 6.9 inches, while the front burners are 8.7 inches and 9.2 inches.

OPERATING INSTRUCTIONS

Your Kenmore electric range features a variety of cooking functions and precise controls for optimal cooking results.



Image Description: This image shows a full front view of the Kenmore 22-96833 electric range stove. It features a stainless steel finish, a black ceramic glass cooktop with five radiant elements, and a front-mounted control panel with rotary knobs and a digital display. The oven door has a large window, revealing the interior racks.

Control Panel Overview

The front-facing control panel provides easy access to all cooking settings. It includes knobs for surface elements and a digital display with touch controls for oven functions.

Top Features That Make a Difference

- **Five triple and dual ring elements** for everyday cooking – sauté, boil, and simmer with precision
- **Element simmers** to 800W, ideal for melting butter or simmering sauces
- **Warm Zone** keeps cooked food warm and ready to serve
- **Ultra-durable** chrome racks to hold even the heaviest dishes
- **Storage drawer** that's ideal for pans, trays, and oven-safe dishes



Image Description: This image shows a close-up of the Kenmore electric range's front control panel. It features four rotary knobs for the cooktop elements and a central digital display with touch controls for various oven functions like Bake, Broil, Convection Bake, Convection Roast, Steam Clean, Warm/Proof, Quick Preheat, Delay Start, Cook Time, and Timer. The display also shows the current time and temperature settings.

Surface Cooking Elements

The cooktop features five versatile radiant heating elements, including triple and dual ring elements, a simmer element, and a warm zone.

- **Triple and Dual Ring Elements:** These elements offer flexibility for various pot and pan sizes. Rotate the corresponding knob to select the desired ring size and heat level.
- **Simmer Element:** Ideal for low-heat cooking, such as melting butter or simmering sauces, providing up to 800W of power.
- **Warm Zone:** Located on the cooktop, this area is designed to keep cooked food warm until ready to serve. It operates at a lower temperature and is not intended for cooking.

Oven Functions

The 5.6 cu. ft. oven offers multiple cooking modes:

- **Bake:** For standard baking of cakes, cookies, and casseroles.
- **Broil:** For direct top-down heat, ideal for browning or searing.
- **True Convection:** Circulates hot air with a fan for even baking and roasting on every rack, reducing cook times.
- **Convection Conversion:** Automatically adjusts standard recipe temperatures and times for convection cooking.
- **Warm/Proof:** Maintains a low temperature to keep food warm or to proof dough.
- **Delay Start:** Allows you to set the oven to begin cooking at a later time.
- **Cook Time:** Sets the duration for cooking, after which the oven will turn off automatically.



Image Description: This image provides a close-up view of the Kenmore electric range oven interior, highlighting the halogen lighting and the large oven window. The chrome racks are visible, allowing users to monitor cooking progress without opening the oven door.

Storage Drawer

A convenient storage drawer is located at the bottom of the range, ideal for organizing bakeware, pans, and oven-safe dishes.

MAINTENANCE AND CLEANING

Regular cleaning and maintenance will ensure the longevity and optimal performance of your Kenmore electric range.

Steam Clean Oven Feature

The Steam Clean function simplifies light cleaning of the oven interior. This feature uses water and heat to loosen food soils, making them easier to wipe away without harsh chemicals.

1. Remove all racks and accessories from the oven.
2. Pour approximately 1 cup of distilled water into the bottom of the oven.
3. Select the "Steam Clean" function on the control panel.
4. Once the cycle is complete, wipe the interior with a damp cloth.

The hidden bake element provides a smooth oven floor, eliminating hard-to-reach areas and simplifying cleanup.



Image Description: This image shows the interior of the Kenmore electric range oven, emphasizing its easy-to-clean design. The hidden bake element creates a seamless oven floor, and the convection fan is visible at the back. This design facilitates effortless cleanup after using the steam clean function.

Cooktop Cleaning

- Allow the cooktop to cool completely before cleaning.
- Use a ceramic cooktop cleaner and a non-abrasive pad for spills and stains.
- Wipe with a clean, damp cloth and dry thoroughly.

Exterior Cleaning

- Use a soft cloth and mild soap or a stainless steel cleaner for exterior surfaces.
- Avoid abrasive cleaners or scouring pads, which can scratch the finish.

TROUBLESHOOTING

Before contacting service, review the following common issues and solutions:

Problem	Possible Cause	Solution
Range does not operate	Power cord not connected; circuit breaker tripped; power outage.	Ensure power cord is securely plugged in. Check household circuit breaker/fuse box. Verify power supply.
Oven not heating properly	Incorrect temperature setting; oven door not closed completely; convection fan issue.	Verify temperature setting. Ensure oven door is fully closed. If convection fan is suspected, contact service.
Surface element not heating	Element knob not set correctly; element malfunction.	Ensure the knob is turned to the desired heat setting and element size. If still not heating, contact service.
Oven light not working	Light bulb loose or burned out.	Ensure the bulb is tightened. Replace with a new appliance bulb if burned out (ensure oven is cool and power is off).
Steam Clean not effective	Insufficient water; heavy soil buildup; oven not cool enough before starting.	Ensure 1 cup of water is used. For heavy soil, multiple cycles or manual cleaning may be required. Ensure oven is at room temperature.

SPECIFICATIONS

Feature	Detail
Brand Name	Kenmore
Model Info	2296833
Item Weight	171 pounds
Product Dimensions	10 x 10 x 10 inches (Note: This seems like packaging dimensions, actual product dimensions are 29.9" W x 36" H x 25" D as per image)
Item model number	2296833
Capacity	5.6 Cubic Feet

Feature	Detail
Installation Type	Freestanding
Part Number	2296833
Form Factor	Freestanding
Burner type	Radiant
Drawer Type	Storage
Heating Elements	5
Color	Stainless Steel
Control Console	Knob
Fuel type	Electric
Material Type	Stainless Steel
Batteries Required?	No
Date First Available	August 27, 2024
Finish Type	Brushed
Model Name	5.6 cu. ft. Front Control Electric Range Oven

Note: The "Product Dimensions" listed as 10x10x10 inches in the specifications table likely refers to packaging or a generic placeholder. Actual product dimensions are approximately 29.9" W x 36" H x 25" D, as indicated in the dimension diagram.

WARRANTY INFORMATION

Kenmore appliances typically come with a limited warranty covering defects in materials and workmanship. Please refer to the warranty card included with your appliance or visit the official Kenmore website for specific terms and conditions, including warranty duration and coverage details.

Keep your purchase receipt as proof of purchase for any warranty claims.






CUSTOMER SUPPORT

For technical assistance, service scheduling, or to order replacement parts, please contact Kenmore Customer Support.

- **Online Support:** Visit the official Kenmore website for FAQs, troubleshooting guides, and contact forms.
- **Telephone Support:** Refer to your warranty documentation or the Kenmore website for the most current customer service phone numbers.

When contacting support, please have your appliance model number (2296833) and serial number ready.

Related Documents - 2296833

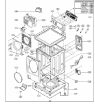
	<p>Kenmore Electric Range Model 95163# Use & Care Guide</p> <p>This Kenmore electric range use and care guide provides essential information for installation, operation, safety, and maintenance of Model 95163#. Learn about its features, controls, and troubleshooting.</p>
	<p>Kenmore ELITE HE3t Steam Front-Loading Automatic Washer Use & Care Guide</p> <p>User manual for the Kenmore ELITE HE3t Steam Front-Loading Automatic Washer, covering installation, operation, features, care, and troubleshooting. Learn how to get the most out of your high-efficiency appliance.</p>
	<p>Kenmore Ultra Wash Dishwasher with SmartWash Technology - Models 22-13032, 22-13033, 22-13039</p> <p>Detailed specifications, features, dimensions, and accessory information for the Kenmore Ultra Wash Dishwasher with SmartWash Technology. Covers models 22-13032 (White), 22-13033 (Stainless), and 22-13039 (Black), highlighting its wash system, cycles, energy efficiency, and warranty.</p>
	<p>Guide d'utilisation et d'entretien - Cuisinière Électrique Kenmore KKFTR4.8-RearAFC-SS</p> <p>Manuel d'utilisation et d'entretien pour la cuisinière électrique Kenmore modèle KKFTR4.8-RearAFC-SS. Ce guide fournit des instructions détaillées sur l'installation, l'utilisation, l'entretien et le dépannage.</p>
	<p>Kenmore KKFTR4.8-RearAFC-SS Electric Range Use & Care Guide</p> <p>This Kenmore electric range Use & Care Guide provides essential safety instructions, installation details, operating procedures, maintenance tips, and troubleshooting for the KKFTR4.8-RearAFC-SS model, featuring a 30-inch width, 5 cu. ft. capacity, ceramic glass top, air fry, and convection.</p>

The Kenmore Elite® is a registered trademark of Sears, Roebuck and Company.

Appliance Factory Parts

**Kenmore 41532
Owner's Manual**

Shop genuine replacement parts for Kenmore 41532



Find Your Kenmore Washer Parts - Select From 150 Models

Manual contents follow

[Kenmore Elite Front-Loading Automatic Washer Owner's Manual and Use & Care Guide](#)

Comprehensive owner's manual and use & care guide for the Kenmore Elite Front-Loading Automatic Washer (Model 796.4153#). Provides detailed information on safety instructions, installation requirements, features, operation, maintenance, troubleshooting, and warranty. Includes guidance on connecting water lines, drain hose, and power supply.