

manuals.plus /

- › [Gyroor](#) /
- › [Gyroor H30 Max Electric Scooter User Manual](#)

Gyroor H30 Max

Gyroor H30 Max Electric Scooter User Manual

Model: H30 Max | Brand: Gyroor

1. INTRODUCTION

Thank you for choosing the Gyroor H30 Max Electric Scooter. This manual provides essential information for the safe operation, assembly, and maintenance of your scooter. Please read it thoroughly before first use to ensure optimal performance and safety.



Figure 1.1: Gyroor H30 Max Electric Scooter. This image shows the scooter from the side, highlighting its sleek design, LED lights along the deck, and musical notes floating above, indicating its Bluetooth speaker feature.

2. SAFETY INFORMATION

Your safety is paramount. Always follow these guidelines:

- Always wear a helmet and appropriate safety gear (knee pads, elbow pads) when riding.
- Ensure all screws and quick releases are securely fastened before each ride.
- Do not ride in wet conditions, on uneven surfaces, or at night without proper lighting.

- Maintain a safe distance from other riders, pedestrians, and obstacles.
- Do not exceed the maximum weight limit of 121 pounds (55 kg).
- This scooter is designed for children aged 6-12. Adult supervision is recommended.
- Familiarize yourself with local laws and regulations regarding electric scooter use.
- Avoid sudden turns or maneuvers at high speeds.
- Use both the foot brake and electronic brake for effective stopping.

3. PACKAGE CONTENTS

Please check the package for the following items:

- Gyroor H30 Max Electric Scooter x 1
- User Manual x 1
- Charger x 1
- Assembly Tools (Allen wrenches)

4. ASSEMBLY

The Gyroor H30 Max Electric Scooter comes partially assembled. Follow these steps to complete the assembly:

1. Carefully remove the scooter and all components from the packaging.
2. Lift the handlebar stem and insert it into the main body of the scooter until it clicks into place. Ensure the locking mechanism is fully engaged.
3. Secure the handlebar stem using the provided screws and Allen wrench. Tighten firmly to prevent wobbling.
4. Check that the front wheel is properly aligned with the handlebar.



Figure 4.1: Assembly Overview. This image shows a child riding the scooter, with an overlay highlighting key specifications like the 150W motor, 21.6V 2.5A smart battery, and 2 hours fast charge time, indicating the scooter's readiness for use after assembly.

5. CHARGING THE BATTERY

Before first use, fully charge the scooter's battery. The 21.6V 2.6A smart battery charges fully in approximately 2 hours.

- Locate the charging port on the scooter.

- Connect the charger to the charging port, then plug the charger into a standard wall outlet.
- The indicator light on the charger will change (e.g., from red to green) when charging is complete.
- Disconnect the charger once fully charged. Do not overcharge.



Figure 5.1: Battery System. This image provides an internal view of the scooter's 21.6V/2.6Ah capacity battery, emphasizing its 2-hour fast charge capability.

6. OPERATING INSTRUCTIONS

6.1. Power On/Off

Press and hold the power button on the LED display to turn the scooter on or off.

6.2. Riding the Scooter

1. Place one foot firmly on the scooter deck.
2. Use your other foot to kick-slide off the ground to gain initial momentum (approx. 3 mph).
3. Once moving, gently twist the accelerator knob on the handlebar to engage the motor and increase speed.
4. To stop, release the accelerator and use either the electronic brake (lever on handlebar) or the rear foot brake (press down on the rear fender).



Figure 6.1: How to Ride. This illustration demonstrates the three key steps for operating the scooter: 1) Kick-start to 3mph, 2) Twist

accelerator for speed, and 3) Release accelerator and use brakes to stop.

6.3. Speed Modes

The scooter features multiple speed settings. Refer to the LED display and controls to switch between modes. The maximum speed is 10 MPH.

6.4. Adjustable Height

The handlebar height can be adjusted to 3 levels: 34", 36", and 38" to accommodate different rider heights. Use the quick-release clamp on the stem to adjust and secure the height.

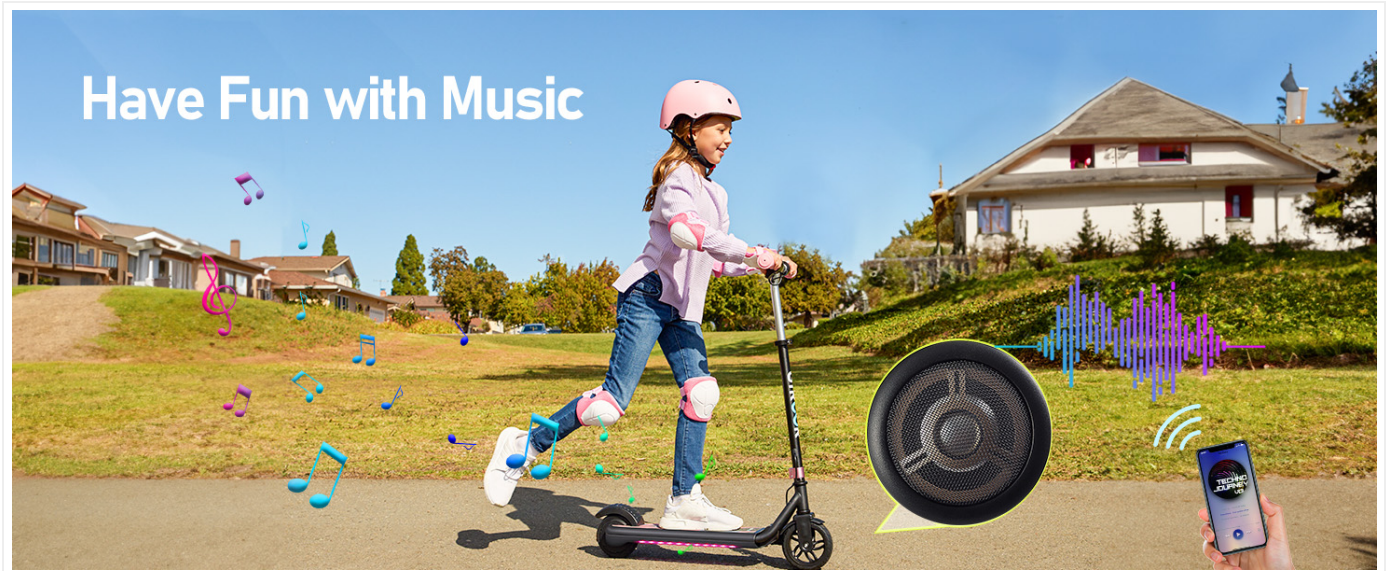


Figure 6.2: Adjustable Height. This image illustrates three scooters set at different handlebar heights (34", 36", 38"), demonstrating the adjustable feature for various rider sizes.

6.5. LED Lights & Bluetooth Speaker

The scooter is equipped with vibrant LED lights and a built-in Bluetooth speaker.

- **LED Lights:** The lights automatically activate when the scooter is powered on, enhancing visibility and adding a fun element.
- **Bluetooth Speaker:** To connect, turn on the scooter and search for "Gyroor H30 Max" (or similar) on your mobile device's Bluetooth settings. Pair the devices to play music through the scooter's speaker.

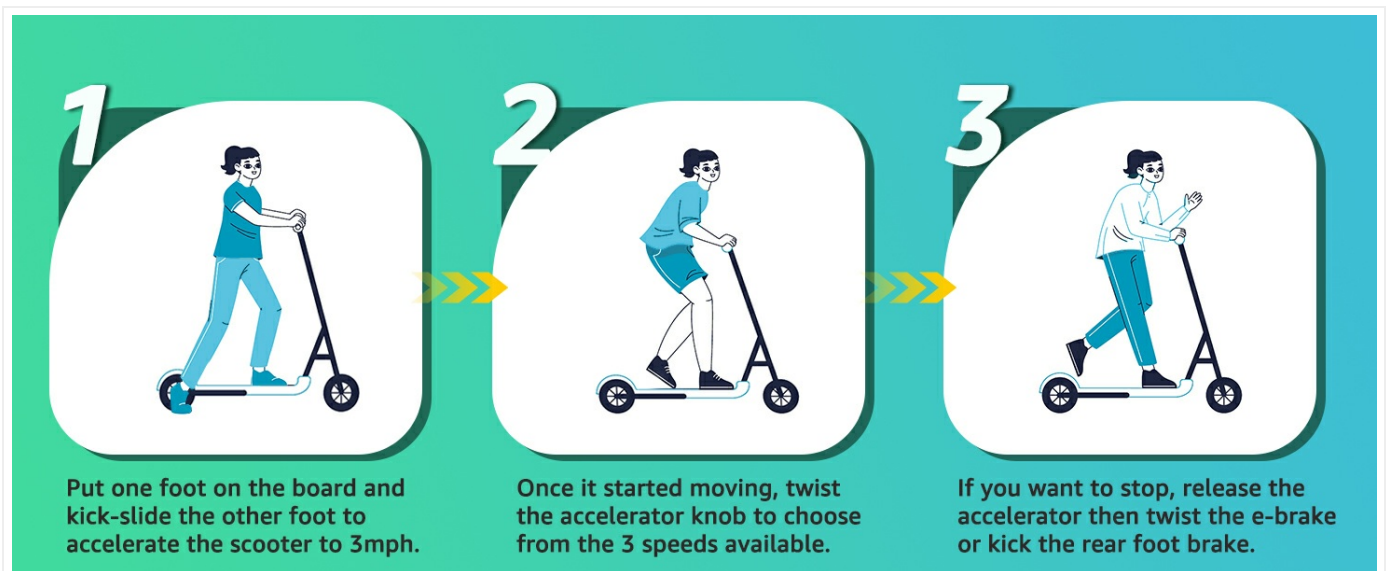


Figure 6.3: Music Feature. This image depicts a child enjoying music while riding the scooter, with musical notes and a speaker icon

indicating the integrated Bluetooth speaker functionality.



Figure 6.4: Ambient Lights. This close-up image showcases the scooter's front tire and the colorful ambient LED lights that illuminate the ground, enhancing visibility and aesthetic appeal.

7. MAINTENANCE

- **Cleaning:** Wipe the scooter with a damp cloth. Do not use harsh chemicals or abrasive materials. Do not wash with high-pressure water.
- **Storage:** Store the scooter in a cool, dry place away from direct sunlight and extreme temperatures.
- **Battery Care:** Charge the battery regularly, even if not in use, to maintain its lifespan. Avoid fully discharging the battery.
- **Tires:** Check tire pressure (if applicable for solid tires, ensure they are free from debris) and wear periodically.
- **Brakes:** Regularly inspect the brake system for proper function and adjust if necessary.
- **Fasteners:** Periodically check and tighten all screws and bolts to ensure they are secure.

8. TROUBLESHOOTING

Problem	Possible Cause	Solution
Scooter does not turn on.	Low battery; Power button not pressed correctly.	Charge the battery; Press and hold the power button firmly.
Scooter not moving when accelerator is twisted.	Not kick-started; Brake engaged; Motor issue.	Kick-start to at least 3 mph; Ensure brakes are fully released; Contact support if motor issue persists.
Bluetooth speaker not connecting.	Scooter not in pairing mode; Device too far; Interference.	Ensure scooter is on; Bring device closer; Restart both devices.
Handlebar is wobbly.	Loose screws or quick-release.	Tighten all assembly screws and ensure quick-release is securely fastened.

9. SPECIFICATIONS

Feature	Detail
---------	--------

Feature	Detail
Model Name	H30 Max
Motor Power	150W
Battery	21.6V 2.6A (2.6Ah)
Charging Time	Approx. 2 hours
Max Speed	10 MPH
Weight Limit	121 Pounds (55 kg)
Wheel Size	6 Inches
Wheel Material	Rubber
Frame Material	Aluminum
Brake System	Dual (Foot Brake, Electronic Brake)
Adjustable Height	34", 36", 38"
Recommended Age	6-12 years

10. WARRANTY AND SUPPORT


Gyroor provides the following warranty for the H30 Max Electric Scooter:

- **Battery:** 6-month limited warranty.
- **Other Components:** 1-year limited warranty.

For warranty claims, technical support, or any inquiries, please contact Gyroor customer service. Refer to the product packaging or the official Gyroor website for contact details.

Note on Videos: No official seller videos were available for embedding in this manual. For visual instructions, please refer to the included manual or the manufacturer's official website.

Related Documents - H30 Max

	<p>Gyroor H30 Max Electric Scooter User Manual</p> <p>Comprehensive user manual for the Gyroor H30 Max Electric Scooter, covering installation, operation, safety guidelines, battery and charger information, warranty, and specifications.</p>
---	--

	<p>Gyroor H30 Pro Electric Scooter User Manual</p> <p>Comprehensive user manual for the Gyroor H30 Pro Electric Scooter, covering installation, operation, safety guidelines, battery and charger information, warranty scope, package contents, and technical specifications. Learn how to safely ride and maintain your electric scooter.</p>
	<p>Gyroor H30 Max Electric Scooter User Manual and Guide</p> <p>Comprehensive user manual for the Gyroor H30 Max Electric Scooter, covering setup, operation, safety, maintenance, specifications, and warranty information.</p>
	<p>H30 Max Electric Scooter: User Manual, Safety, and Operation Guide</p> <p>Get started with your Gyroor H30 Max Electric Scooter. This guide covers setup, riding instructions, safety precautions, battery care, charging, warranty, and technical specifications.</p>
	<p>Gyroor H30 Electric-Assisted Scooter User Manual and Safety Guide</p> <p>Comprehensive user manual for the Gyroor H30 Electric-Assisted Scooter, covering product accessories, installation, riding operations, safety instructions, battery and charger information, warranty, and contact details.</p>
	<p>Gyroor H30 Pro Electric Scooter User Manual and Safety Guide</p> <p>Comprehensive user manual for the Gyroor H30 Pro electric scooter, covering installation, operation, safety instructions, battery care, warranty, and specifications. Learn how to ride safely and maintain your scooter.</p>