

## Manuals+

[Q & A](#) | [Deep Search](#) | [Upload](#)

manuals.plus /

› [DCOLOR](#) /

› [DCOLOR TV LED Backlight with HDMI 4K 60Hz Sync Box User Manual](#)

## DCOLOR MZ-TSB2A

# DCOLOR TV LED Backlight with HDMI 4K 60Hz Sync Box

Model: MZ-TSB2A

## INTRODUCTION

This manual provides instructions for the installation, operation, and maintenance of your DCOLOR TV LED Backlight with HDMI 4K 60Hz Sync Box. This system is designed to enhance your viewing experience by synchronizing LED backlighting with the on-screen content of your 55-65 inch television.

## PACKAGE CONTENTS

Please verify that all components are present before beginning installation:

- HDMI Sync Box
- RGBIC LED Strip Light (12.5 ft)
- Power Adapter
- HDMI Cable
- Mounting Clips
- User Manual

## SETUP INSTRUCTIONS

Follow these steps for proper installation of your DCOLOR TV LED Backlight system. This system is designed for 55-65 inch TVs and does not require an app or Wi-Fi for basic operation.

### Step 1: Prepare the LED Strip

Unroll the 12.5ft RGBIC LED strip. Ensure the TV surface where the strip will be applied is clean and dry. The strip is designed to cover all four sides of a 55-65 inch TV without cutting or splicing.

# Fitting 55" to 65" TVs

Adapt length without cutting and splicing



Image: LED strip on a reel with included mounting clips, suitable for 55-65 inch TVs.

## Step 2: Attach the LED Strip to the TV

Carefully peel the adhesive backing from the LED strip and firmly press it onto the back perimeter of your TV. Start from one corner and work your way around, ensuring the strip is evenly placed. Use the provided mounting clips for additional security, especially at corners or where the strip might lift.

## Full Corners Mapping Capacity



Image: Step-by-step diagram illustrating the placement of the LED strip on the back of the TV.

### Step 3: Connect the Sync Box

1. Connect the LED strip to the USB-C port on the HDMI Sync Box.
2. Connect the HDMI Sync Box's HDMI output to an HDMI input port on your TV.
3. Connect your external media device (e.g., streaming box, game console, cable box) to the HDMI input port on the HDMI Sync Box.
4. Connect the power adapter to the HDMI Sync Box and plug it into a power outlet.

# Easy Setup

No Need WiFi or App

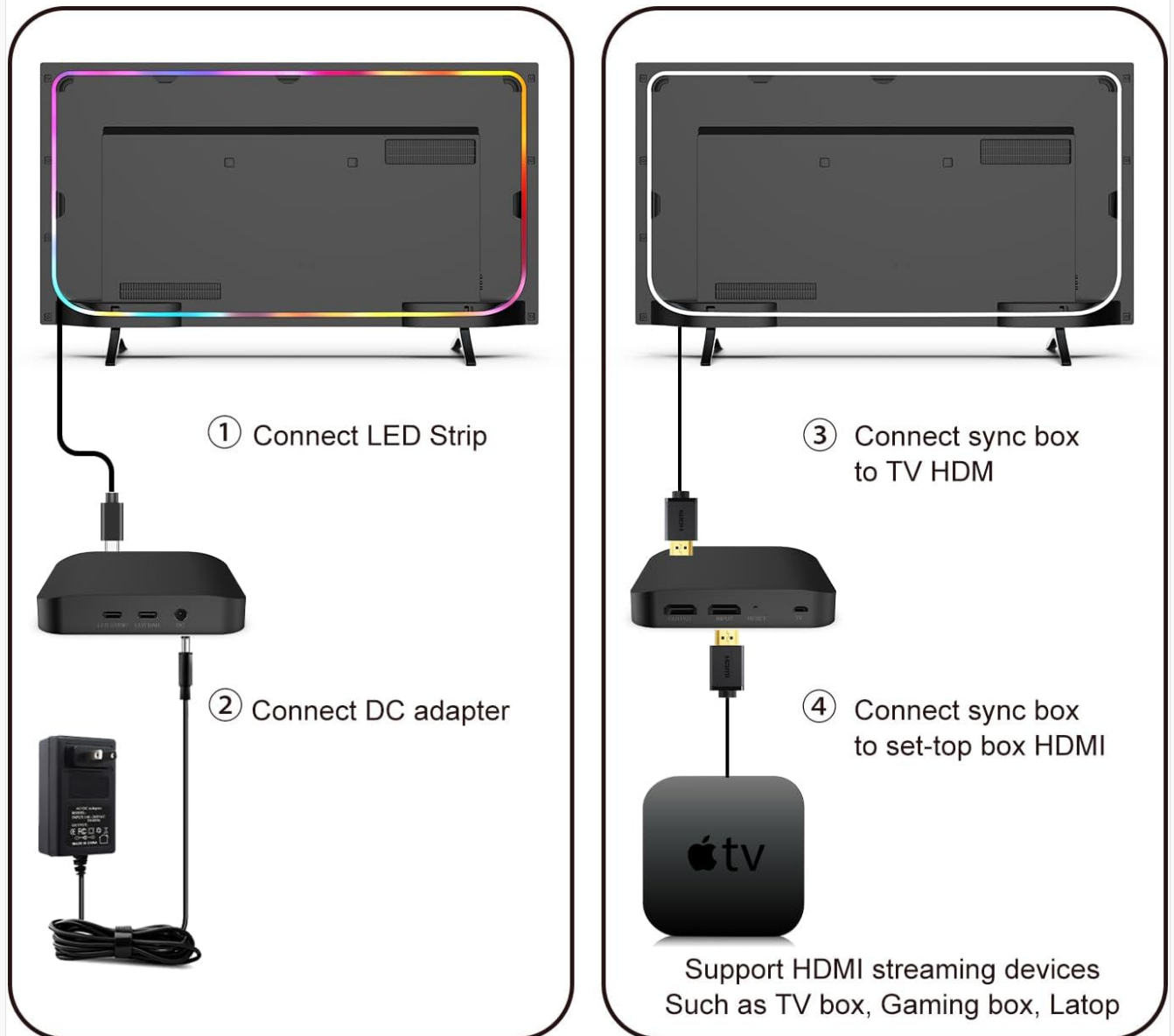


Image: Connection diagram for the LED strip, sync box, TV, and an external HDMI streaming device.

*Note: The sync box processes the HDMI signal from your external device. Ensure your TV input is set to the HDMI port where the sync box is connected.*

## OPERATING INSTRUCTIONS

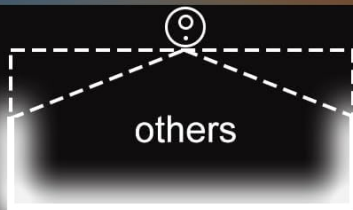
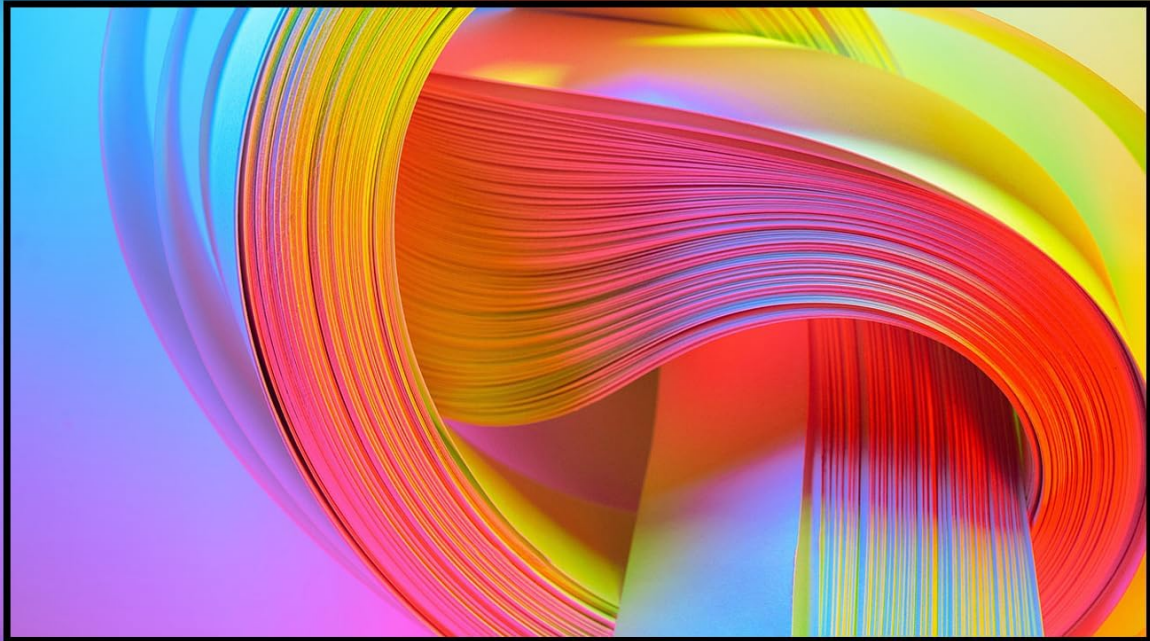
The DCOLOR TV LED Backlight system automatically synchronizes with your TV's display content, providing an immersive lighting experience.

### Automatic Color Synchronization

Once powered on and connected correctly, the LED lights will automatically detect and match the colors displayed on your TV screen. This real-time synchronization ensures a responsive visual experience with near-zero delay.

# Real-Time Performance

latency-free



0.1S Delay Camera Capture



No Delay HDMI Sync

Image: A television displaying dynamic content with the DCOLOR LED backlight system actively synchronizing colors, demonstrating real-time performance.

# *Blend Multiple Colors of Light*

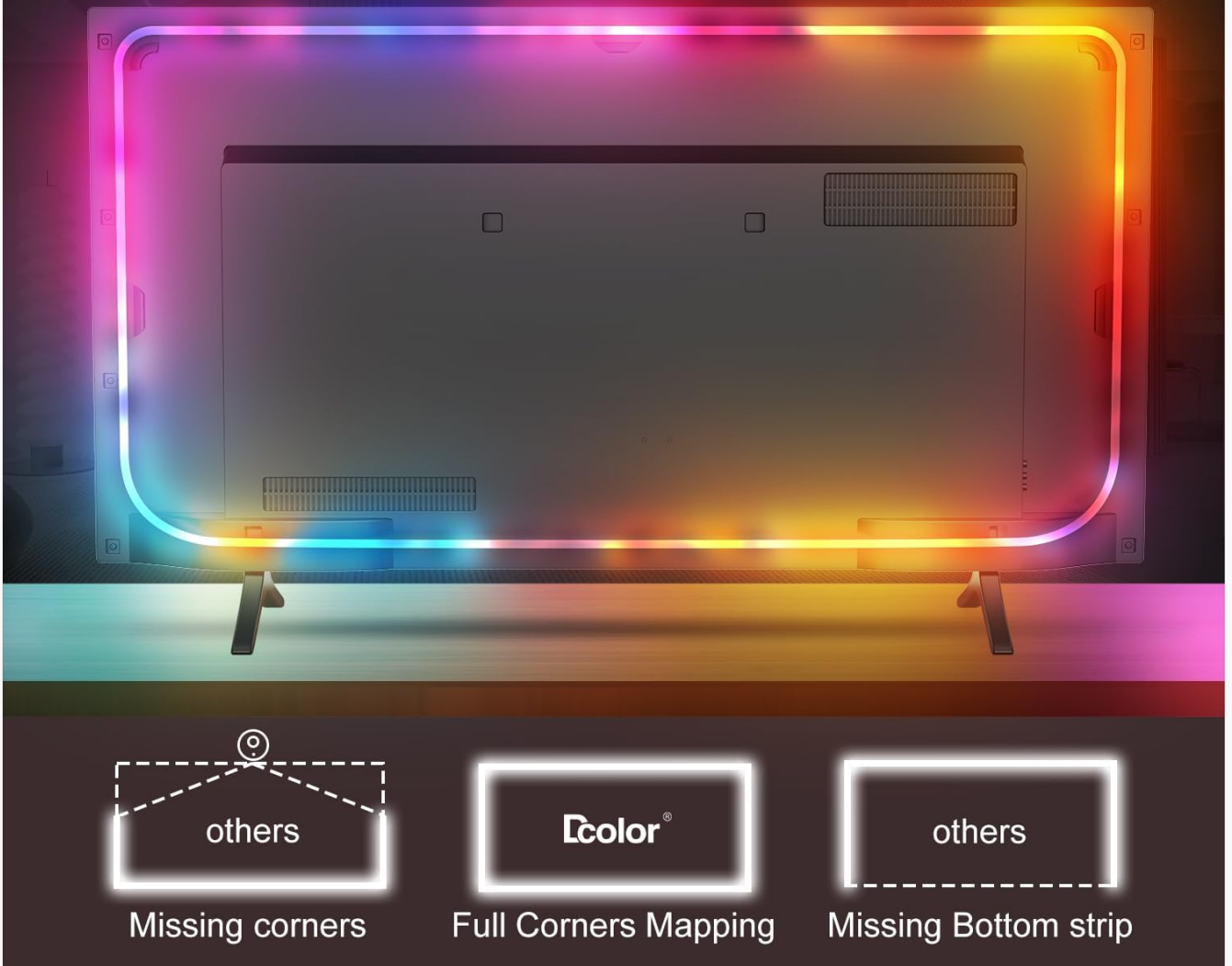


Image: The back of a TV with the LED strip installed, illustrating the 360-degree full corner mapping for comprehensive backlighting.

## **Vibrant Color Display**

The RGBIC technology allows for 16 million color combinations, providing stunning light effects that enhance movies, games, and other visual content. The system offers enhanced brightness due to a higher density of LED beads.

# 16 Million RGB Color

Twice the LED beads, brighter, more colors



Image: A TV screen showcasing vibrant, abstract colors, complemented by the synchronized RGBIC LED backlight, highlighting the 16 million color capability.

## 4K 60Hz Video Support

The sync box supports up to 4K resolution at 60Hz, ensuring smooth video playback and an optimal gaming experience without compromising picture quality.

# Supports Up to 4K@60Hz Video

Ideal for smooth video playback and gaming



Image: A TV displaying a high-resolution scene of a car, demonstrating the system's support for 4K@60Hz video with synchronized backlighting.

## Remote Control Operation

The system is controlled via a remote. Refer to the remote control's specific instructions for adjusting settings such as brightness or switching modes (if available). The product description indicates no app or Wi-Fi control is needed, implying remote control is the primary method.

## Visual Demonstration

Your browser does not support the video tag.

Video: A demonstration of the DCOLOR TV LED Backlight system in action, showcasing its real-time color synchronization with various on-screen content. This video highlights the immersive viewing experience provided by the backlight.

Your browser does not support the video tag.

Video: Another visual demonstration of the DCOLOR TV LED Backlight, illustrating how the lights enhance the overall TV viewing experience by extending the on-screen colors to the surrounding wall.

## MAINTENANCE

To ensure the longevity and optimal performance of your DCOLOR TV LED Backlight system, follow these simple maintenance guidelines:

- **Cleaning:** Gently wipe the LED strips and the sync box with a soft, dry cloth to remove dust. Avoid using liquid cleaners directly on the components.
- **Cable Management:** Ensure all cables are neatly organized and not under tension to prevent damage.
- **Environmental Conditions:** Operate the system in a dry environment. Avoid exposure to extreme temperatures or humidity.

## TROUBLESHOOTING

If you encounter issues with your DCOLOR TV LED Backlight, refer to the following common solutions:

Problem	Possible Cause	Solution
LED lights do not turn on.	Power connection issue, sync box not receiving power.	Check if the power adapter is securely connected to the sync box and the power outlet. Ensure the outlet is functional.
Lights are on but not synchronizing with TV content.	Incorrect HDMI connections, TV input not set correctly.	Verify that your external media device is connected to the <b>Input</b> port of the sync box, and the sync box's <b>Output</b> port is connected to your TV. Ensure your TV's input source is set to the correct HDMI port connected to the sync box.
Partial LED strip not lighting up.	Damaged LED segment or poor connection.	Inspect the LED strip for any visible damage or loose connections. If a segment is faulty, contact customer support.
No signal or poor picture quality on TV.	Faulty HDMI cable or sync box issue.	Try a different HDMI cable. Bypass the sync box to see if the external device works directly with the TV. If the issue persists, the sync box may be faulty.
Lights remain on after TV is off.	External device still active or sync box not entering standby.	Ensure all connected external devices are powered off or in standby mode. Manually power off the sync box using its remote if necessary.

If these steps do not resolve the issue, please contact DCOLOR customer support for further assistance.

## SPECIFICATIONS

- **Brand:** DCOLOR
- **Model Number:** MZ-TSB2A
- **Compatible TV Size:** 55-65 Inch
- **LED Strip Length:** 12.5 feet (approx. 3.8 meters)
- **Light Type:** RGBIC LED
- **Video Support:** Up to 4K@60Hz

- **Control Method:** Remote
- **Power Source:** Corded Electric
- **Indoor/Outdoor Usage:** Indoor
- **Material:** Acrylic
- **Item Weight:** 1.44 ounces (approx. 40.8 grams)
- **Package Dimensions:** 7.17 x 6.81 x 2.44 inches

---

## WARRANTY AND SUPPORT

For warranty information or technical support, please refer to the contact details provided with your product packaging or visit the official DCOLOR website. Keep your purchase receipt as proof of purchase for any warranty claims.

---

© 2024 DCOLOR. All rights reserved.