

## FESTO EGC-HD-220-790-BS-10P-0H-GK

# Instruction Manual

FESTO EGC-HD-220-790-BS-10P-0H-GK 556821 Spindle Axis

Model: EGC-HD-220-790-BS-10P-0H-GK

## 1. INTRODUCTION

This manual provides essential information for the safe and efficient operation, installation, and maintenance of the FESTO EGC-HD-220-790-BS-10P-0H-GK Spindle Axis. This high-precision component is designed for demanding industrial applications requiring linear motion with high rigidity and dynamic performance. Please read this manual thoroughly before installation or operation to ensure proper use and to prevent damage or injury.

## 2. SAFETY INFORMATION

Always observe general safety regulations and accident prevention guidelines when working with industrial machinery. Failure to follow these instructions may result in serious injury or damage to the equipment.

- Ensure all power sources are disconnected before performing any installation, maintenance, or repair work.
- Only qualified personnel should install, operate, and maintain this equipment.
- Wear appropriate personal protective equipment (PPE) at all times.
- Do not exceed the specified load capacities or operating parameters.
- Keep hands and loose clothing away from moving parts.
- Regularly inspect the axis for signs of wear, damage, or loose connections.

## 3. SETUP AND INSTALLATION

### 3.1 Unpacking and Inspection

Carefully unpack the spindle axis and inspect it for any signs of shipping damage. Report any damage to the carrier immediately. Verify that all components listed in the packing slip are present.



Figure 3.1: The FESTO EGC-HD-220-790-BS-10P-0H-GK Spindle Axis, showing its robust linear guide and drive mechanism. This image displays the primary view of the axis, highlighting its compact design and integrated components.

## 3.2 Mounting

The spindle axis must be mounted on a rigid, flat, and stable surface to ensure optimal performance and prevent misalignment. Use appropriate fasteners and torque settings as specified in the detailed mounting instructions (refer to the full technical documentation for specific mounting hole patterns and dimensions).

- Ensure the mounting surface is clean and free of debris.
- Align the axis carefully to avoid binding or excessive friction.
- Tighten mounting screws evenly and to the recommended torque.

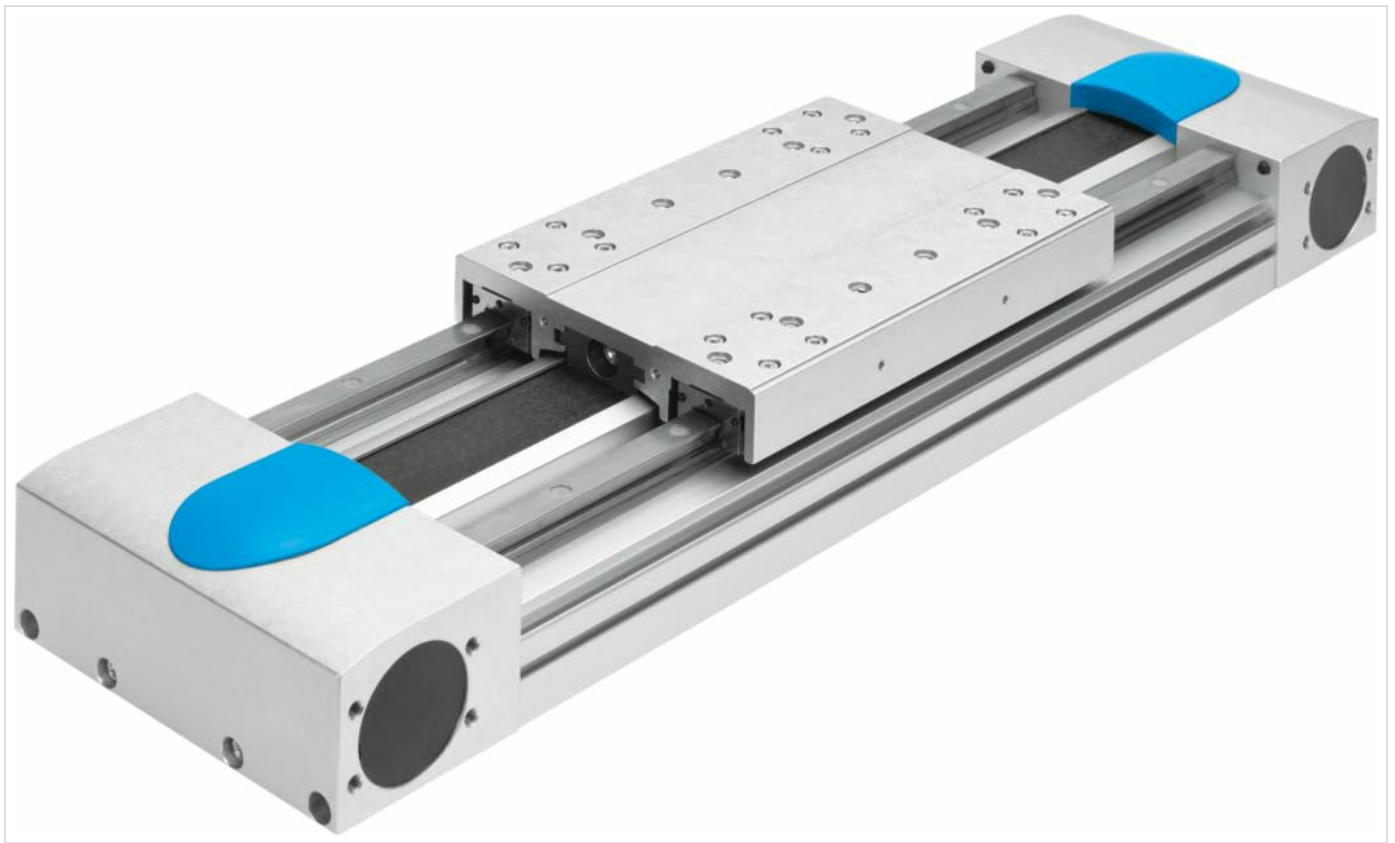


Figure 3.2: An alternative view of the FESTO EGC-HD-220-790-BS-10P-0H-GK Spindle Axis, potentially showing the end caps or different mounting points. This perspective provides additional detail on the structural integrity and design of the linear unit.

### 3.3 Electrical/Pneumatic Connections

Connect the spindle axis to the appropriate control system and power supply according to the wiring diagrams provided in the complete technical documentation. Ensure all connections are secure and comply with local electrical codes. For pneumatic variants, connect air supply lines to the designated ports, ensuring proper pressure and filtration.

## 4. OPERATING INSTRUCTIONS

---

### 4.1 Initial Power-Up

Before applying power, double-check all connections and ensure no obstructions are present in the axis's travel path. Power up the control system and the spindle axis according to the system's startup procedure.

### 4.2 Basic Operation

The spindle axis is typically controlled via a connected motion controller or PLC. Refer to your system's programming manual for specific commands to initiate motion, set speeds, and define positions. Start with slow movements to verify correct operation and alignment.

### 4.3 Operational Considerations

- Monitor the axis for unusual noises, vibrations, or excessive heat during operation.
- Do not operate the axis beyond its specified load limits or duty cycle.
- Ensure emergency stop functions are tested regularly and are fully operational.

## 5. MAINTENANCE

---

Regular maintenance is crucial for extending the lifespan and ensuring the reliable performance of your FESTO Spindle

Axis.

5.1 Routine Checks

- **Daily/Weekly:** Visually inspect the axis for any loose fasteners, signs of wear, or debris accumulation. Check for smooth movement.
- **Monthly/Quarterly:** Verify proper lubrication. Check for excessive play in the guide system. Inspect electrical/pneumatic connections for integrity.

5.2 Cleaning

Keep the axis clean and free of dust, chips, and other contaminants. Use a soft cloth and a mild, non-abrasive cleaner. Avoid using solvents that could damage seals or coatings.

5.3 Lubrication

The spindle and guide elements require periodic lubrication. Refer to the specific lubrication schedule and recommended lubricants in the full technical documentation for the EGC-HD series. Use only specified lubricants to maintain performance and warranty.

5.4 Storage

If storing the axis for an extended period, ensure it is clean, properly lubricated, and stored in a dry, temperature-controlled environment to prevent corrosion and degradation of components.

6. TROUBLESHOOTING

This section provides solutions to common issues. For more complex problems, contact FESTO technical support.

Problem	Possible Cause	Solution
Axis not moving	No power; control signal absent; emergency stop engaged; mechanical obstruction.	Check power supply and connections; verify control signals; disengage E-stop; remove obstructions.
Unusual noise/vibration	Lack of lubrication; loose mounting; worn components; misalignment.	Apply lubricant; tighten mounting bolts; inspect for wear and replace parts if necessary; check alignment.
Reduced accuracy/repeatability	Excessive wear in guides; backlash in drive; contamination.	Inspect and replace worn components; clean the axis thoroughly.

7. SPECIFICATIONS

Key technical specifications for the FESTO EGC-HD-220-790-BS-10P-0H-GK Spindle Axis:

- Model Number:** EGC-HD-220-790-BS-10P-0H-GK
- Manufacturer:** FESTO
- Type:** Spindle Axis (Linear Drive)
- Application:** Industrial linear motion, material handling, automation
- Package Dimensions:** 11.81 x 11.81 x 11.81 inches
- Package Weight:** 10.58 ounces
- ASIN:** B0DFC4R98B

**First Available:** August 27, 2024

*Note: For detailed performance curves, load capacities, and environmental specifications, please refer to the official FESTO product datasheet for this model.*

## 8. WARRANTY AND SUPPORT

### 8.1 Warranty Information

FESTO products are manufactured to high quality standards and typically come with a manufacturer's warranty covering defects in materials and workmanship. The specific terms and duration of the warranty may vary by region and product. Please retain your proof of purchase. For detailed warranty information, refer to the official FESTO warranty policy available on their website or contact your local FESTO representative.

### 8.2 Technical Support




For technical assistance, troubleshooting beyond this manual, spare parts, or service, please contact FESTO customer support. Have your product model number (EGC-HD-220-790-BS-10P-0H-GK) and serial number (if applicable) ready when contacting support.




You can find contact information for your regional FESTO support team on the official FESTO website [www.festo.com](http://www.festo.com)



© 2024 FESTO. All rights reserved. Information subject to change without notice.

### Related Documents - EGC-HD-220-790-BS-10P-0H-GK

	<p><a href="#">Festo Spindle Axes EGC-BS-KF with Recirculating Ball Bearing Guide</a></p> <p>Discover the Festo EGC-BS-KF spindle axes, featuring recirculating ball bearing guides for high rigidity, load capacity, and precision. Explore key features, technical specifications, and selection aids for these electromechanical drives.</p>
	<p><a href="#">Festo ELGA-TB Toothed Belt Axes: Selection Guide and Technical Data</a></p> <p>Explore the Festo ELGA-TB series of toothed belt axes, designed for high-speed, high-precision linear motion applications. This guide provides detailed technical specifications, key features, and selection aids for various models including KF, RF, and G variants, suitable for automation and handling systems.</p>
	<p><a href="#">Defender StarWave 06 Wired Gaming Keyboard Instruction Manual</a></p> <p>Instruction manual for the Defender StarWave 06 wired gaming keyboard, detailing setup, features, and usage. Also references other Defender keyboard models such as GK-596, GK-581, GK-417, GK-778DL, GK-077, GK-184, GK-579, and GK-002.</p>

 <p>The image shows the cover of the SMA Sunny Island 4.4M/6.0H/8.0H Firmware Update User Manual. It features a yellow SMA Sunny Island inverter on a white background. The SMA logo is in the top right corner. The text 'User Manual' is in the top left. Below the inverter image, it says 'SUNNY ISLAND 4.4M / 6.0H / 8.0H' and 'Firmware Update User Manual'. At the bottom, it says 'SMA' and 'Copyright © SMA Solar Technology AG'.</p>	<p><a href="#">SMA Sunny Island 4.4M/6.0H/8.0H Firmware Update User Manual</a></p> <p>User manual for executing a firmware update on SMA Sunny Island 4.4M, 6.0H, and 8.0H inverters. Covers preparation, configuration, execution, and troubleshooting steps for firmware updates.</p>
 <p>The image shows the cover of the 'Decorative Ceiling Tiles WPC Wall Panels User Guide'. It features a photograph of a modern interior space with blue and white decorative ceiling tiles and WPC wall panels. The title 'Decorative Ceiling Tiles' is at the top left, and 'User Guide for WPC Wall Panels' is below it. At the bottom, it says 'Decorative Ceiling Tiles Inc.' and 'www.decorativeceilingtiles.com'.</p>	<p><a href="#">User Guide for Decorative Ceiling Tiles WPC Wall Panels</a></p> <p>This user guide provides essential care and maintenance instructions for Decorative Ceiling Tiles' WPC Wall Panels, ensuring their longevity and aesthetic appeal.</p>
 <p>The image shows the cover of the Franke Kitchen Hood User Manual for FCS, FCC, and FCL series. It features a list of product models: FCS 100, FCS 120, FCS 140, FCS 160, FCS 180, FCS 200, FCS 220, FCS 240, FCS 260, FCS 280, FCS 300, FCS 320, FCS 340, FCS 360, FCS 380, FCS 400, FCS 420, FCS 440, FCS 460, FCS 480, FCS 500, FCS 520, FCS 540, FCS 560, FCS 580, FCS 600, FCS 620, FCS 640, FCS 660, FCS 680, FCS 700, FCS 720, FCS 740, FCS 760, FCS 780, FCS 800, FCS 820, FCS 840, FCS 860, FCS 880, FCS 900, FCS 920, FCS 940, FCS 960, FCS 980, FCS 1000, FCS 1020, FCS 1040, FCS 1060, FCS 1080, FCS 1100, FCS 1120, FCS 1140, FCS 1160, FCS 1180, FCS 1200, FCS 1220, FCS 1240, FCS 1260, FCS 1280, FCS 1300, FCS 1320, FCS 1340, FCS 1360, FCS 1380, FCS 1400, FCS 1420, FCS 1440, FCS 1460, FCS 1480, FCS 1500, FCS 1520, FCS 1540, FCS 1560, FCS 1580, FCS 1600, FCS 1620, FCS 1640, FCS 1660, FCS 1680, FCS 1700, FCS 1720, FCS 1740, FCS 1760, FCS 1780, FCS 1800, FCS 1820, FCS 1840, FCS 1860, FCS 1880, FCS 1900, FCS 1920, FCS 1940, FCS 1960, FCS 1980, FCS 2000, FCS 2020, FCS 2040, FCS 2060, FCS 2080, FCS 2100, FCS 2120, FCS 2140, FCS 2160, FCS 2180, FCS 2200, FCS 2220, FCS 2240, FCS 2260, FCS 2280, FCS 2300, FCS 2320, FCS 2340, FCS 2360, FCS 2380, FCS 2400, FCS 2420, FCS 2440, FCS 2460, FCS 2480, FCS 2500, FCS 2520, FCS 2540, FCS 2560, FCS 2580, FCS 2600, FCS 2620, FCS 2640, FCS 2660, FCS 2680, FCS 2700, FCS 2720, FCS 2740, FCS 2760, FCS 2780, FCS 2800, FCS 2820, FCS 2840, FCS 2860, FCS 2880, FCS 2900, FCS 2920, FCS 2940, FCS 2960, FCS 2980, FCS 3000, FCS 3020, FCS 3040, FCS 3060, FCS 3080, FCS 3100, FCS 3120, FCS 3140, FCS 3160, FCS 3180, FCS 3200, FCS 3220, FCS 3240, FCS 3260, FCS 3280, FCS 3300, FCS 3320, FCS 3340, FCS 3360, FCS 3380, FCS 3400, FCS 3420, FCS 3440, FCS 3460, FCS 3480, FCS 3500, FCS 3520, FCS 3540, FCS 3560, FCS 3580, FCS 3600, FCS 3620, FCS 3640, FCS 3660, FCS 3680, FCS 3700, FCS 3720, FCS 3740, FCS 3760, FCS 3780, FCS 3800, FCS 3820, FCS 3840, FCS 3860, FCS 3880, FCS 3900, FCS 3920, FCS 3940, FCS 3960, FCS 3980, FCS 4000, FCS 4020, FCS 4040, FCS 4060, FCS 4080, FCS 4100, FCS 4120, FCS 4140, FCS 4160, FCS 4180, FCS 4200, FCS 4220, FCS 4240, FCS 4260, FCS 4280, FCS 4300, FCS 4320, FCS 4340, FCS 4360, FCS 4380, FCS 4400, FCS 4420, FCS 4440, FCS 4460, FCS 4480, FCS 4500, FCS 4520, FCS 4540, FCS 4560, FCS 4580, FCS 4600, FCS 4620, FCS 4640, FCS 4660, FCS 4680, FCS 4700, FCS 4720, FCS 4740, FCS 4760, FCS 4780, FCS 4800, FCS 4820, FCS 4840, FCS 4860, FCS 4880, FCS 4900, FCS 4920, FCS 4940, FCS 4960, FCS 4980, FCS 5000, FCS 5020, FCS 5040, FCS 5060, FCS 5080, FCS 5100, FCS 5120, FCS 5140, FCS 5160, FCS 5180, FCS 5200, FCS 5220, FCS 5240, FCS 5260, FCS 5280, FCS 5300, FCS 5320, FCS 5340, FCS 5360, FCS 5380, FCS 5400, FCS 5420, FCS 5440, FCS 5460, FCS 5480, FCS 5500, FCS 5520, FCS 5540, FCS 5560, FCS 5580, FCS 5600, FCS 5620, FCS 5640, FCS 5660, FCS 5680, FCS 5700, FCS 5720, FCS 5740, FCS 5760, FCS 5780, FCS 5800, FCS 5820, FCS 5840, FCS 5860, FCS 5880, FCS 5900, FCS 5920, FCS 5940, FCS 5960, FCS 5980, FCS 6000, FCS 6020, FCS 6040, FCS 6060, FCS 6080, FCS 6100, FCS 6120, FCS 6140, FCS 6160, FCS 6180, FCS 6200, FCS 6220, FCS 6240, FCS 6260, FCS 6280, FCS 6300, FCS 6320, FCS 6340, FCS 6360, FCS 6380, FCS 6400, FCS 6420, FCS 6440, FCS 6460, FCS 6480, FCS 6500, FCS 6520, FCS 6540, FCS 6560, FCS 6580, FCS 6600, FCS 6620, FCS 6640, FCS 6660, FCS 6680, FCS 6700, FCS 6720, FCS 6740, FCS 6760, FCS 6780, FCS 6800, FCS 6820, FCS 6840, FCS 6860, FCS 6880, FCS 6900, FCS 6920, FCS 6940, FCS 6960, FCS 6980, FCS 7000, FCS 7020, FCS 7040, FCS 7060, FCS 7080, FCS 7100, FCS 7120, FCS 7140, FCS 7160, FCS 7180, FCS 7200, FCS 7220, FCS 7240, FCS 7260, FCS 7280, FCS 7300, FCS 7320, FCS 7340, FCS 7360, FCS 7380, FCS 7400, FCS 7420, FCS 7440, FCS 7460, FCS 7480, FCS 7500, FCS 7520, FCS 7540, FCS 7560, FCS 7580, FCS 7600, FCS 7620, FCS 7640, FCS 7660, FCS 7680, FCS 7700, FCS 7720, FCS 7740, FCS 7760, FCS 7780, FCS 7800, FCS 7820, FCS 7840, FCS 7860, FCS 7880, FCS 7900, FCS 7920, FCS 7940, FCS 7960, FCS 7980, FCS 8000, FCS 8020, FCS 8040, FCS 8060, FCS 8080, FCS 8100, FCS 8120, FCS 8140, FCS 8160, FCS 8180, FCS 8200, FCS 8220, FCS 8240, FCS 8260, FCS 8280, FCS 8300, FCS 8320, FCS 8340, FCS 8360, FCS 8380, FCS 8400, FCS 8420, FCS 8440, FCS 8460, FCS 8480, FCS 8500, FCS 8520, FCS 8540, FCS 8560, FCS 8580, FCS 8600, FCS 8620, FCS 8640, FCS 8660, FCS 8680, FCS 8700, FCS 8720, FCS 8740, FCS 8760, FCS 8780, FCS 8800, FCS 8820, FCS 8840, FCS 8860, FCS 8880, FCS 8900, FCS 8920, FCS 8940, FCS 8960, FCS 8980, FCS 9000, FCS 9020, FCS 9040, FCS 9060, FCS 9080, FCS 9100, FCS 9120, FCS 9140, FCS 9160, FCS 9180, FCS 9200, FCS 9220, FCS 9240, FCS 9260, FCS 9280, FCS 9300, FCS 9320, FCS 9340, FCS 9360, FCS 9380, FCS 9400, FCS 9420, FCS 9440, FCS 9460, FCS 9480, FCS 9500, FCS 9520, FCS 9540, FCS 9560, FCS 9580, FCS 9600, FCS 9620, FCS 9640, FCS 9660, FCS 9680, FCS 9700, FCS 9720, FCS 9740, FCS 9760, FCS 9780, FCS 9800, FCS 9820, FCS 9840, FCS 9860, FCS 9880, FCS 9900, FCS 9920, FCS 9940, FCS 9960, FCS 9980, FCS 10000. The Franke logo is at the top left.</p>	<p><a href="#">Franke Kitchen Hood User Manual: FCS, FCC, FCL Series</a></p> <p>Comprehensive user manual for Franke kitchen hoods, including safety instructions, operating guidelines, cleaning, and maintenance for FCS, FCC, and FCL series models.</p>