

[Manuals.plus](#) /

> [CHUMPOSH](#) /

> CHUMPOSH Pro Car Vacuum ST-6655 Plus User Manual

CHUMPOSH ST-6655 Plus

CHUMPOSH Pro Car Vacuum ST-6655 Plus User Manual

4-in-1 Portable Cordless Vacuum, Air Blower, and Inflator

1. INTRODUCTION

Thank you for choosing the CHUMPOSH Pro Car Vacuum ST-6655 Plus. This versatile 4-in-1 device is designed to provide powerful and convenient cleaning for your car, home, and office. It functions as a vacuum cleaner, air duster, air blower, and inflator, offering a comprehensive solution for various cleaning and inflation needs. Please read this manual carefully before use to ensure proper operation and maintenance.

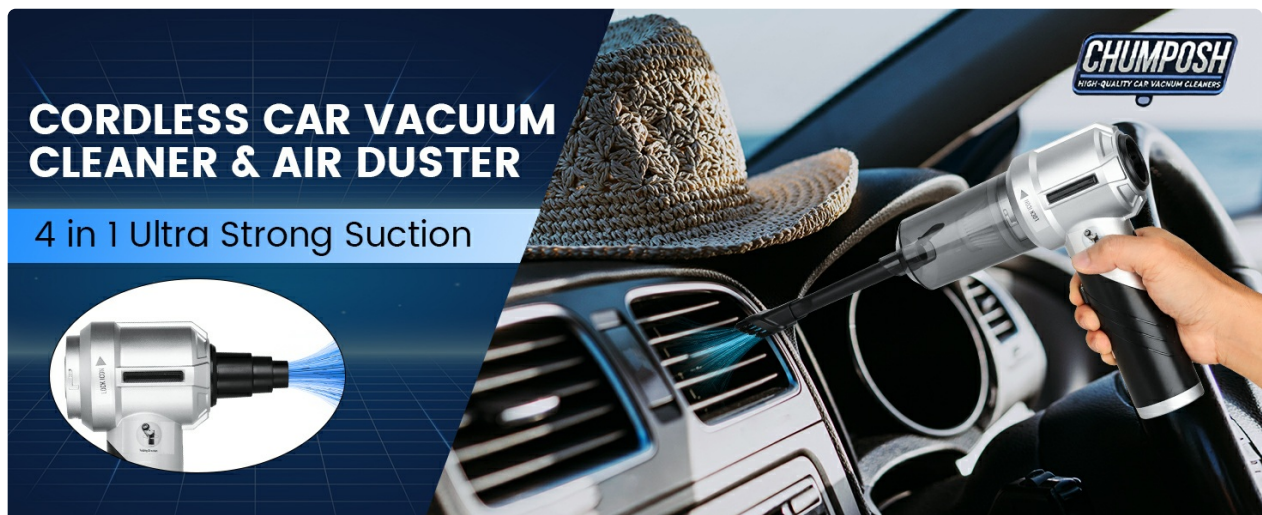


Image: The CHUMPOSH Pro Car Vacuum ST-6655 Plus demonstrating its multi-functional capabilities.

2. SAFETY INSTRUCTIONS

To ensure safe operation and prevent damage, please observe the following safety precautions:

- Do not immerse the device in water or other liquids.
- Keep the device away from heat sources, direct sunlight, and flammable materials.
- Do not use the device to vacuum liquids, hot ashes, sharp objects, or hazardous materials.
- Ensure the dust cup and filters are correctly installed before operation.
- Do not block the air inlets or outlets during use.
- Keep out of reach of children.
- Use only the provided charging cable and adapter.
- If the device is damaged, do not attempt to repair it yourself. Contact customer service.

3. PRODUCT OVERVIEW AND PACKAGE CONTENTS

Familiarize yourself with the components included in your package:



Image: Detailed view of the product packaging list with all accessories.

1. Fuselage (Main Unit)
2. Long and Flat Suction Mouth + Brush
3. Blow Long Nozzle + Brush
4. Fine Steel Filter Element
5. Short Blowing Nozzle
6. Small Inflator Nozzle
7. USB Charging Cable
8. Large Inflator Nozzle
9. Multi-function Air Blower
10. Fine Steel Filter Element (Spare)
11. Filter (HEPA) x2
12. Storage Bag

4. SETUP

4.1 Initial Charging

Before first use, fully charge the device. Connect the provided USB-C charging cable to the charging port on the vacuum and plug the other end into a suitable USB power adapter (not included). The indicator light will show red during charging and turn green when fully charged. A full charge typically takes 2.5 to 3 hours.

90° FOLDABLE CAR VACUUM PORTABLE CORDLESS



Image: Charging process and indicator lights.

4.2 Attaching Accessories

The CHUMPOSH Pro Car Vacuum ST-6655 Plus is designed for easy attachment of various nozzles and brushes. Simply align the desired accessory with the suction or blowing port and push firmly until it clicks into place. To remove, pull the accessory gently.

4.3 Foldable Design

The vacuum features a 90-degree foldable design for compact storage. To fold, gently push the release button (if present) or rotate the handle until it locks into the folded position. To unfold, reverse the process.

CHUMPOSH



18000PA

High-Powered Suction for Quick Absorption



90°Foldable Portable

90° foldable design for easy carrying and storage.



Brushless Motor

Increased Machine Life And Efficiency



2500mAh*3

30Min Continuous Runtime

New Ultra-Powerful Handheld Vacuum

Other



Only 7000PA

Weak suction that can't clean thoroughly.



Non-Foldable Design

Takes up space and Non-portable.



Brush Motor

Short lifespan and high noise.



1000mAh*1

Drains power in just a few minutes

Old Weak Suction Handheld Vacuum

Image: Foldable design for portability and storage.

5. OPERATING INSTRUCTIONS

5.1 Power On/Off and Suction Levels

Press the power button to turn on the vacuum. The device may have multiple suction levels (e.g., 9000PA, 12000PA, 18000PA). Press the power button repeatedly to cycle through the suction levels. Press and hold the power button to turn off the device.

18000PA

Brushless Motor Strong Suction



First Gear **9000PA**



Second Gear **12000PA**



Third Gear **18000PA**



Image: Suction power levels.

5.2 Vacuuming Function

Attach the appropriate nozzle for your cleaning task. The long flat suction mouth with brush is ideal for crevices and car interiors. The floor brush is suitable for larger flat surfaces like carpets or upholstery.

- **For Car Interiors:** Use the long flat suction mouth or brush attachment to clean dust and debris from seats, floor mats, and tight spaces.
- **For Home/Office:** Utilize the floor brush for carpets or the crevice tool for keyboards and furniture gaps.

REUSABLE WASHABLE RECHARGEABLE

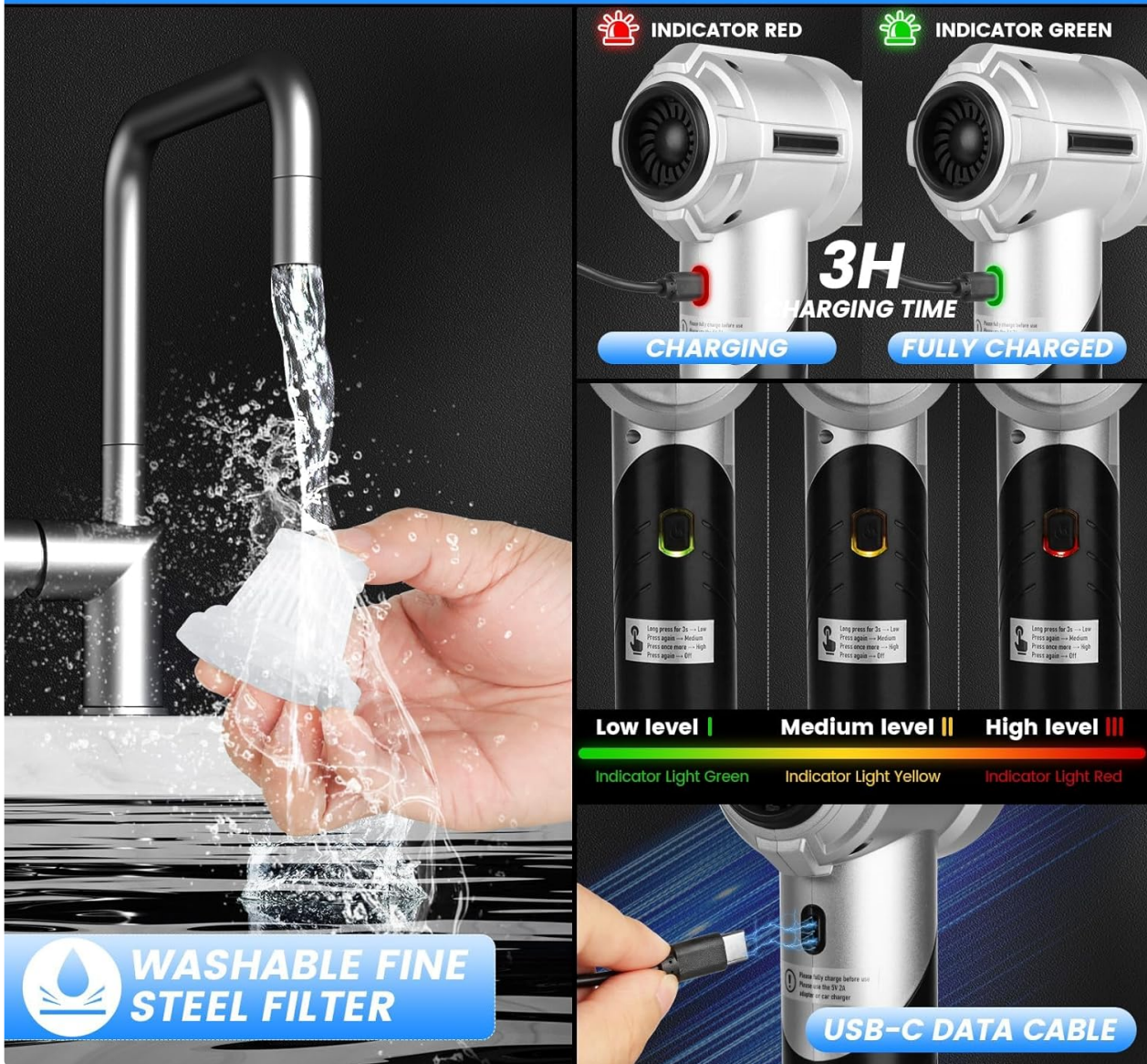


Image: Examples of vacuuming applications.

5.3 Air Blower and Inflator Function

To use the blowing function, attach the desired blowing nozzle to the exhaust port of the device. The various nozzles allow for different applications:

- **Air Duster:** Use the short or long blowing nozzle to remove dust from keyboards, electronics, or delicate surfaces.
- **Inflator:** Attach the small or large inflator nozzle to inflate items like life rings, air beds, or other inflatables.
- **Air Extractor:** The device can also be used to extract air from compression bags.

Occasions Without Accessories

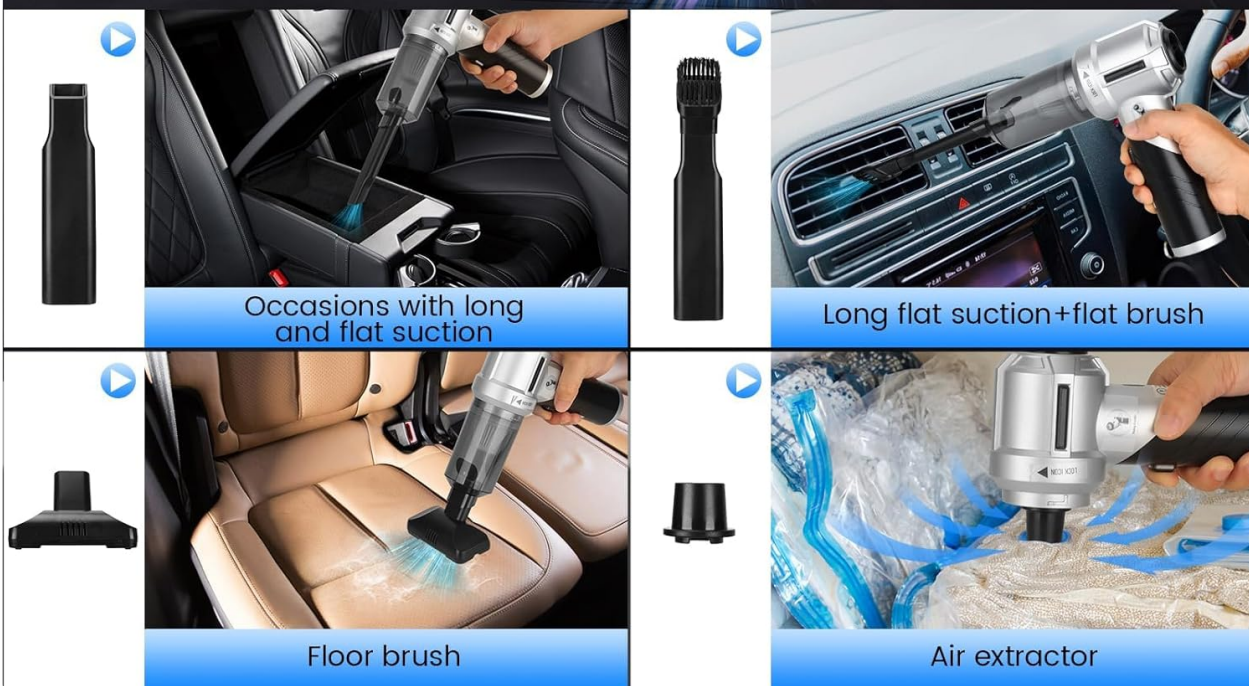


Image: Examples of blowing and inflating applications.

6. MAINTENANCE

6.1 Emptying the Dust Cup

Regularly empty the dust cup to maintain optimal suction power. To empty, twist and detach the dust cup from the main unit. Dispose of collected debris and reattach the dust cup securely.

6.2 Cleaning the Filters

The device features a dual filtration system with a washable HEPA filter and a fine steel filter. For best performance, clean the filters after every few uses.

- **Fine Steel Filter:** This filter can be rinsed under running water. Ensure it is completely dry before reinserting.

- **HEPA Filter:** The HEPA filter can be cleaned with a brush to remove dust. It can also be gently rinsed with water. Allow it to air dry completely for at least 24 hours before reinstallation. The HEPA filter should be replaced every 2-3 months depending on usage.

 Only shows the suction effect, Please don't imitate

MOST POWERFUL SUCTION



Image: Washable fine steel filter cleaning.

6.3 Storage

Store the vacuum and its accessories in the provided storage bag in a cool, dry place, away from direct sunlight and extreme temperatures.

7. TROUBLESHOOTING

Problem	Possible Cause	Solution
Device does not turn on	Battery is depleted.	Charge the device fully.

Problem	Possible Cause	Solution
Low suction power	Dust cup is full. Filters are clogged. Obstruction in nozzle.	Empty dust cup. Clean or replace filters. Check and clear any obstructions.
Device stops working shortly after turning on	Battery is low. Overheating protection activated.	Recharge the battery. Allow the device to cool down before resuming use.
Charging indicator light not working	Charging cable or adapter is faulty.	Try a different USB-C cable or power adapter.

8. SPECIFICATIONS

Feature	Detail
Brand	CHUMPOSH
Model Name	car vacuum ST-6655 Plus
Special Features	Cordless, Foldable, HEPA, Portable, Washable Filter
Filter Type	HEPA Filter
Is Cordless?	Yes
Capacity	400 Milliliters
Wattage	90 watts
Charging Time	2.5 - 3 Hours
Maximum Suction	18000 PA
Recommended Uses	Car, Office, Home, Sofa
Form Factor	Handheld
Color	Black
Product Dimensions	7.2"L x 3.1"W x 9.8"H
Noise Level	70 dB
Battery Life	15-30 minutes (depending on suction level)
Connectivity Technology	USB

9. WARRANTY AND SUPPORT

CHUMPOSH is committed to providing high-quality products and excellent customer service.

- **30-Day Return Policy:** Enjoy a 30-day no-reason return or exchange policy.
- **365-Day Replacements:** Replacements and accessories are available within 365 days of purchase.
- **Lifetime Service:** We offer lifetime after-sales service for every customer.
- **Customer Support:** Our responsive customer service team is available to assist with any questions within 24 hours.

For support, please refer to the contact information provided with your purchase or visit the official CHUMPOSH website.

© 2025 CHUMPOSH. All rights reserved.