

## Ocypus Liquid cooler Iota L24 BK

# Ocypus Iota L24 AIO CPU Water Cooler User Manual

Model: Liquid cooler Iota L24 BK | Brand: Ocypus

## 1. INTRODUCTION

Thank you for choosing the Ocypus Iota L24 AIO CPU Water Cooler. This advanced liquid cooling solution is designed to provide efficient heat dissipation for your CPU, ensuring stable performance even under heavy loads. Featuring a unique floating visual digital display, customizable ARGB lighting, and high-performance silent fans, the Iota L24 combines aesthetics with superior cooling capabilities. This manual will guide you through the installation, operation, and maintenance of your new cooler.



*Figure 1: Ocypus Iota L24 AIO CPU Water Cooler*

## 2. PRODUCT FEATURES

### 2.1 Floating Visual Digital Display

The Iota L24 features a flat digital display elevated through a high-transparency cover, creating an enhanced sense of space and a visually striking effect. This display provides real-time monitoring of your CPU or GPU temperature.

The flat digital display is elevated through the high-transparency cover, creating an enhanced sense of space.

# Visual Leap with Digital Display



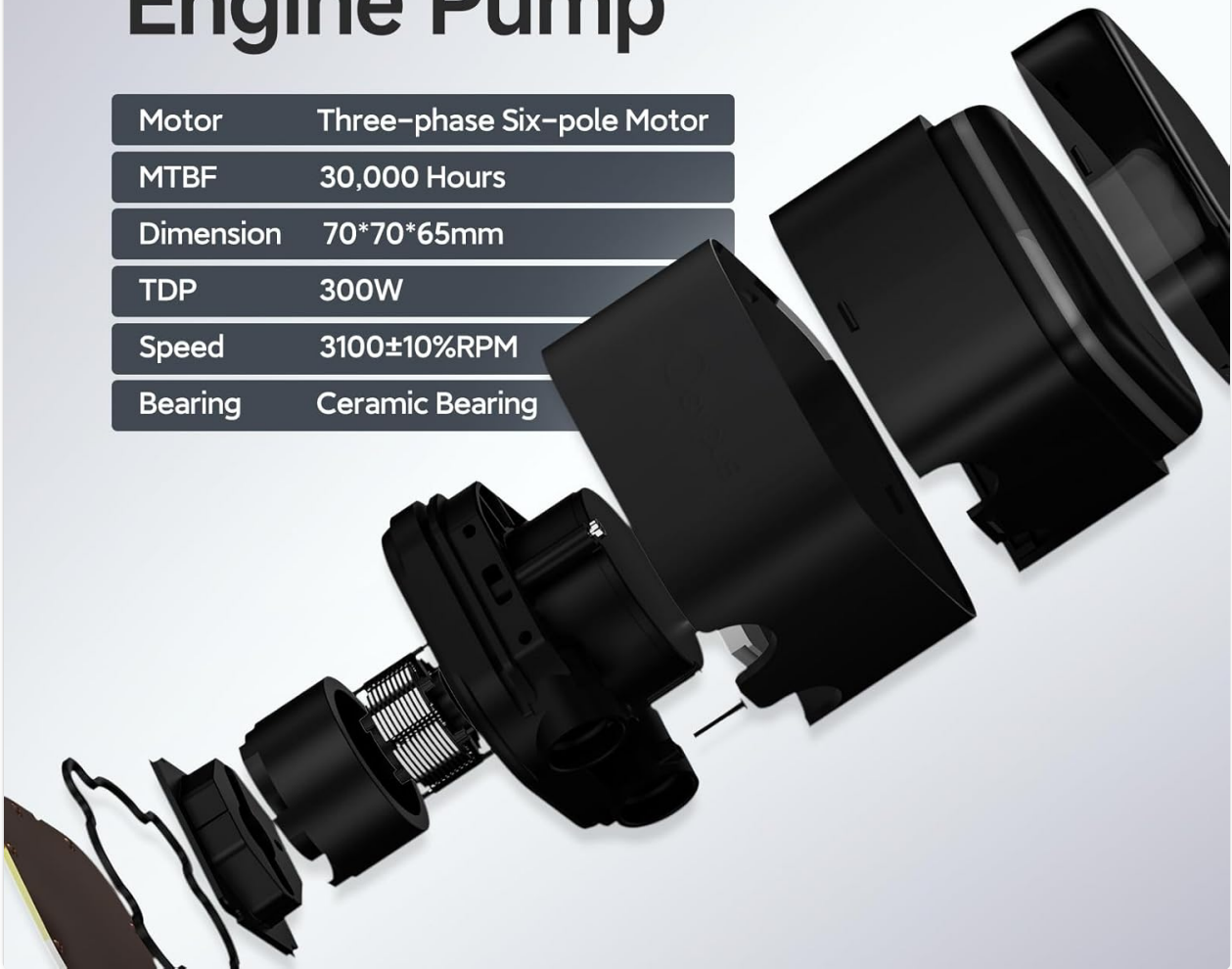
*Figure 2: Floating Visual Digital Display*

## 2.2 Supercharged Engine Pump

The 70x70x65mm CPU liquid cooler pump efficiently manages liquid cooling circulation, ensuring sustained high-performance output and significantly lowering core temperatures. It is designed for robust and reliable operation.

# Supercharged Engine Pump

Motor	Three-phase Six-pole Motor
MTBF	30,000 Hours
Dimension	70*70*65mm
TDP	300W
Speed	3100±10%RPM
Bearing	Ceramic Bearing



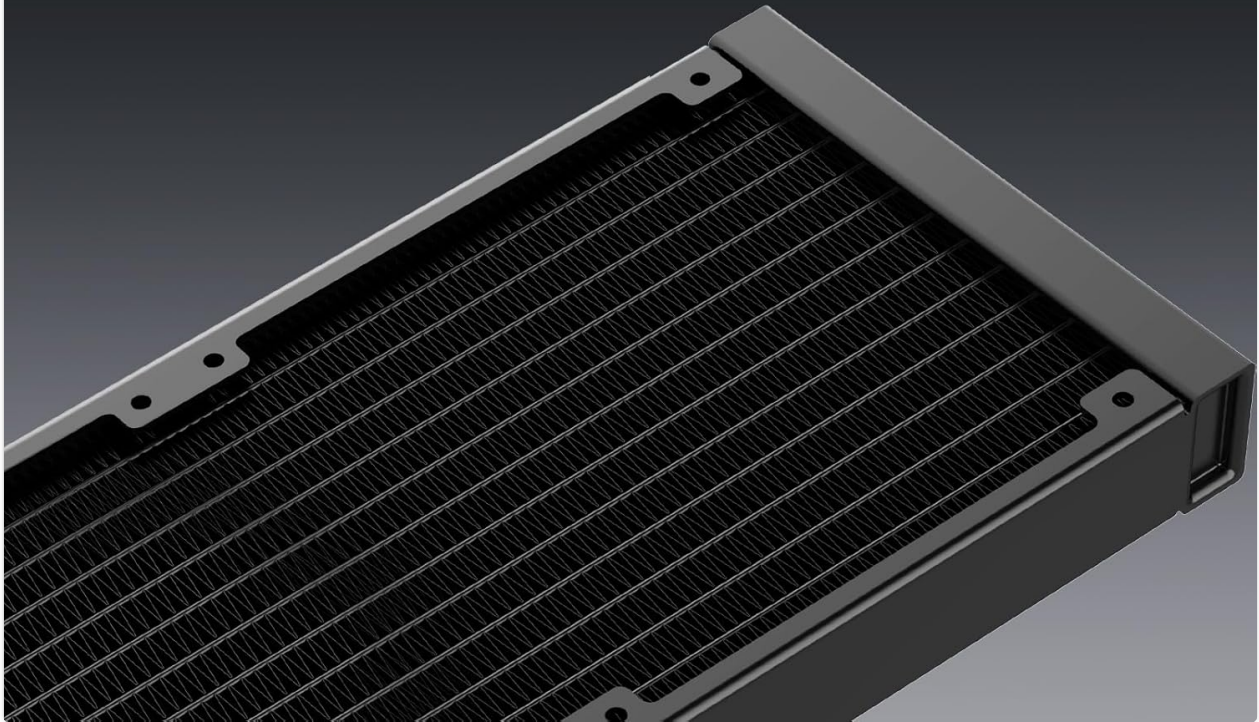
*Figure 3: Supercharged Engine Pump Design*

## 2.3 240MM Aluminum Radiator

The 240mm aluminum radiator provides an efficient cooling solution. Its lightweight design reduces stress on your PC case while maximizing heat dissipation.

# 240MM Aluminium Radiator

12 Rows of water path ways for liquid and heat transfer with high-performance fans, effectively and quickly dissipates heat.



*Figure 4: 240MM Aluminum Radiator*

## 2.4 ARGB Lighting Control

The Iota 240mm AIO supports ARGB independent control, making it compatible with various motherboard lighting control software (e.g., ASRock Polychrome Sync, MSI Mystic Light Sync, GIGABYTE RGB Fusion 2.0, ASUS Aura Sync). This allows for easy management and customization of pump lighting effects.

# Gathering Myriad Colors

Supports ARGB independent control, compatible with various motherboard lighting control softwares,



Figure 5: ARGB Lighting Control

## 2.5 Low-Noise Fans

Equipped with two 120mm silent fans ( $\leq 29\text{dB(A)}$ ), enhanced with high-quality FDB bearings. These fans feature a redesigned airflow optimization structure, operating at speeds from 500 to 2000  $\pm 10\%$  RPM, with a max airflow of 77 CFM and max air pressure of 4.65mmH<sub>2</sub>O. They strike an optimal balance between low noise and efficient cooling.



# High-Performance Silent Fans

**500~2000 ± 10% RPM**

Speed

**77 CFM**

Air Flow(MAX)

**4.65 mmH<sub>2</sub>O**

Air Pressure(MAX)

**≤29dB(A)**

Noise

**FDB**

Bearing Type



Figure 6: High-Performance Silent Fans

## 3. WHAT'S IN THE BOX

Upon opening your Ocybus Iota L24 AIO CPU Water Cooler package, please verify that all the following components are included:

- 1 x Liquid CPU Cooler (Radiator with attached pump and tubes)
- 1 x Thermal Paste
- 2 x Installation Tools (Mounting hardware kits for Intel and AMD platforms)

276\*120\*27mm(LxWxH)



Figure 7: Product Packaging and Contents

## 4. SETUP AND INSTALLATION

The Iota L24 water cooler is equipped with all-metal mounting hardware, providing straightforward installation support for both Intel and AMD mainstream platforms. Please refer to the detailed installation guide provided with the product for step-by-step instructions specific to your CPU socket type.

### 4.1 Platform Compatibility

- **Intel LGA:** 115X / 1200 / 1700 / 1851
- **AMD:** AM4 / AM5

### 4.2 General Installation Steps (Summary)

1. Prepare your motherboard and CPU by cleaning the CPU surface and applying thermal paste.
2. Attach the appropriate mounting brackets to the pump head for your CPU socket.
3. Secure the pump head onto the CPU, ensuring even pressure.
4. Mount the radiator and fans to your PC case in the desired location (e.g., top, front).



5. Connect the pump and fan cables to the appropriate headers on your motherboard (CPU\_FAN, AIO\_PUMP, ARGB headers).
6. Connect the USB cable from the pump to an available USB 2.0 header on your motherboard for digital display functionality and software control.



Figure 8: Multi-Platform Mounting Hardware

## 5. OPERATING INSTRUCTIONS

### 5.1 Digital Display Operation

The digital display on the pump head shows real-time CPU or GPU temperature. To control and customize the display, you will need to use the Ocypus Digital software.

- **Temperature Display:** Shows current CPU or GPU temperature.
- **Unit Switching:** The Ocypus Digital software allows you to switch between Celsius (°C) and Fahrenheit (°F).
- **Display On/Off:** Control the digital display function via the software.
- **CPU/GPU Selection:** Choose whether to display CPU or GPU temperature.

## 5.2 Ocypus Digital Software

The Ocypus Digital software is essential for controlling the digital display and managing certain aspects of your cooler. It is typically downloaded and installed automatically after the Iota series radiator is installed and connected via USB. If needed, it can also be downloaded from the official Ocypus website. Note: The software is currently available for Windows 10 and above.



Figure 9: Ocypus Digital Software Interface

## 5.3 ARGB Lighting Control

To customize the ARGB lighting effects, connect the cooler's ARGB cable to a compatible ARGB header on your motherboard. Use your motherboard's lighting control software (e.g., ASUS Aura Sync, MSI Mystic Light Sync) to synchronize and personalize the lighting.

## 6. MAINTENANCE

Regular maintenance helps ensure the longevity and optimal performance of your AIO cooler.

- **Dust Removal:** Periodically clean the radiator fins and fan blades using compressed air or a soft brush to prevent dust buildup, which can impede airflow and cooling performance.

- **Check Connections:** Ensure all cables (power, ARGB, USB) are securely connected to the motherboard and cooler components.
- **Inspect Tubing:** Occasionally check the liquid tubes for any signs of kinks, leaks, or damage.
- **Software Updates:** Keep the Ocypus Digital software updated to the latest version for improved functionality and bug fixes.

## 7. TROUBLESHOOTING

If you encounter issues with your Ocypus Iota L24 AIO cooler, refer to the following common troubleshooting steps:

- **Digital Display Not Working:**
  - Ensure the USB cable from the pump is securely connected to a USB 2.0 header on your motherboard.
  - Verify that the Ocypus Digital software is installed and running.
  - Check if the display function is enabled within the Ocypus Digital software.
  - Some users have reported software instability on fully updated Windows 11. Try reinstalling the software or checking for newer versions on the official Ocypus website.
- **High CPU Temperatures:**
  - Ensure the pump is running (you might feel a slight vibration or hear a low hum). Check pump power connection.
  - Verify that the fans are spinning and properly oriented for airflow (intake or exhaust, depending on your case setup).
  - Confirm that the pump head is making good contact with the CPU and that thermal paste was applied correctly.
  - Check for dust buildup on the radiator fins and clean if necessary.
- **Excessive Fan Noise:**
  - Check fan speeds in your motherboard's BIOS/UEFI or fan control software. Adjust fan curves to reduce noise if temperatures allow.
  - Ensure no cables are obstructing the fan blades.
  - Verify that fan screws are tightened properly to prevent vibration.
- **ARGB Lighting Issues:**
  - Ensure the ARGB cable is correctly connected to a compatible 3-pin ARGB header on your motherboard.
  - Use your motherboard's ARGB software to control the lighting.
  - Check for any loose connections or damaged pins on the ARGB cable.

## 8. SPECIFICATIONS

Detailed specifications for the Ocypus Iota L24 AIO CPU Water Cooler:

Feature	Specification
Product Dimensions	15.15 x 6.3 x 7.48 inches (38.48 x 16.00 x 18.99 cm)



Feature	Specification
Item Model Number	Liquid cooler Iota L24 BK
Manufacturer	Ocypus
Power Connector Type	3-Pin
Voltage	12 Volts (DC)
Wattage	3.6 watts
Cooling Method	Water, Air
Compatible Devices	Desktop
Noise Level	≤29 dB(A)
Material	Aluminum, Rubber, Copper
Maximum Rotational Speed	2000 RPM





## 9. WARRANTY AND SUPPORT

The Ocypus Iota L24 AIO CPU Water Cooler comes with a **Three-Year Warranty** from the date of purchase. This warranty covers defects in materials and workmanship under normal use.

If you have any questions about the use of the product, require technical assistance, or need to claim warranty service, please contact Ocypus customer support. Refer to the product packaging or the official Ocypus website for the most current contact information.

### Related Documents - Liquid cooler Iota L24 BK

	<p><a href="#">Ocypus Iota A62 Series CPU Cooler Installation Guide</a></p> <p>Installation guide and warranty information for the Ocypus Iota A62 Series CPU Cooler, compatible with Intel LGA115x/1200/1700/1851 and AMD AM4/AM5 sockets.</p>
	<p><a href="#">REEVEN NAIA 240mm Liquid CPU Cooler Installation Guide</a></p> <p>Comprehensive installation guide for the REEVEN NAIA 240mm All-in-One Liquid CPU Cooler, covering AMD and Intel socket compatibility, parts list, and step-by-step assembly instructions.</p>

	<p><a href="#">TRYX Panorama SE 360 ARGB AIO Cooler: User Manual &amp; Specifications</a></p> <p>Comprehensive user manual for the TRYX Panorama SE 360 ARGB All-In-One liquid CPU cooler. Features a 6.5-inch curved AMOLED display with customizable effects, 360mm radiator, Asetek Adela pump, and support for Intel LGA 1851/1700/1200/115X and AMD AM5/AM4 sockets. Includes installation guide, specifications, and compatibility information.</p>
	<p><a href="#">Alphacool Core Ocean T38 AIO Liquid Cooler Installation Guide</a></p> <p>Alphacool Core Ocean T38 AIO is a liquid CPU cooler designed for efficient thermal management. This guide provides detailed instructions for installation on various Intel and AMD platforms, including component identification, preparation steps, mounting procedures, and connection details for RGB lighting and pump.</p>
	<p><a href="#">XPG LEVANTE II 360 ARGB CPU Liquid Cooler Installation Guide</a></p> <p>Comprehensive guide for installing the XPG LEVANTE II 360 ARGB CPU Liquid Cooler, covering package contents, motherboard setup for Intel and AMD platforms, bracket installation, and fan/pump connections.</p>
	<p><a href="#">Lurker V240 All-in-One 240mm Liquid CPU Cooler User Manual</a></p> <p>User manual for the Lurker V240 All-in-One 240mm Liquid CPU Cooler, providing installation instructions and component details for Intel and AMD motherboards.</p>