

## Manuals+

[Q & A](#) | [Deep Search](#) | [Upload](#)

[manuals.plus](#) /

› [Ocypus](#) /

› [Ocypus Iota L24 AIO CPU Water Cooler with Digital Display - Instruction Manual](#)

## Ocypus Iota L24

# Ocypus Iota L24 AIO CPU Water Cooler with Digital Display - Instruction Manual

Model: Iota L24

Brand: Ocypus

## INTRODUCTION

---

This manual provides detailed instructions for the installation, operation, and maintenance of your Ocypus Iota L24 240MM All-In-One (AIO) CPU Water Cooler. The Iota L24 features an efficient cooling pump, ARGB lighting control, 120MM PWM fans, and a digital display for real-time temperature monitoring. Please read this manual thoroughly before installation and use to ensure proper function and longevity of your product.

The Ocypus Iota liquid CPU cooler features a floating visual design with a flat digital display elevated through a high-transparency cover, creating a sense of depth. It is designed to efficiently manage liquid cooling circulation, ensuring sustained high-performance output and significantly lowering core temperatures.

## WHAT'S IN THE BOX

---

Verify that all components are present before beginning installation.

- 1 x Liquid CPU Cooler (Radiator, Pump, and Tubing pre-assembled)
- 1 x Thermal Paste
- 2 x Installation Tools
- Mounting Hardware for Intel and AMD platforms



Image: All components included in the Ocypos Iota L24 package.

## SETUP AND INSTALLATION

---

The Ocypos Iota L24 water cooler is equipped with all-metal mounting hardware, providing installation support for both Intel and AMD mainstream platforms.

### Platform Compatibility:

- **Intel LGA:** 115X / 1200 / 1700 / 1851
- **AMD:** AM4 / AM5

### General Installation Steps:

1. **Prepare CPU:** Ensure your CPU is clean and free of old thermal paste. Apply the provided thermal paste to the center of the CPU.
2. **Install Backplate (if required):** For Intel sockets, install the appropriate backplate behind the motherboard.
3. **Attach Mounting Brackets:** Secure the correct mounting brackets to the pump head according to your CPU socket type (Intel or AMD).

4. **Mount Pump Head:** Carefully place the pump head onto the CPU, aligning the screws with the backplate or standoffs. Tighten the screws in a cross pattern until snug.
5. **Install Radiator:** Mount the 240mm aluminum radiator to an available fan mount location in your PC case. Ensure proper airflow direction.
6. **Install Fans:** Attach the two 120mm PWM fans to the radiator. Connect the fan cables to the motherboard's fan headers.
7. **Connect Power and ARGB:** Connect the pump power cable to the motherboard's CPU\_FAN or AIO\_PUMP header. Connect the ARGB cable to a compatible motherboard ARGB header for lighting control.
8. **Connect USB for Digital Display:** Connect the digital display's USB cable to an available USB 2.0 header on your motherboard. This is essential for the real-time temperature display and software functionality.



## Dot Matrix Digital Display

Real-time display of CPU or GPU temperature

Digital function requires connection to USB 2.0

Digital software supports Windows 10 / Windows 11



Image: The Ocyclus Iota L24 AIO cooler installed within a computer case, showcasing the pump head and radiator.

# All-Metal Brackets

Compatible with Intel and AMD Mainstream Platforms



Image: Detailed view of the all-metal mounting brackets for Intel and AMD platforms, included with the Ocyplus Iota L24.

## OPERATING INSTRUCTIONS

---

### Initial Power On:

After completing the installation, power on your computer. The digital display on the pump head should illuminate and begin showing temperature readings. The ARGB lighting will also activate.

### Fan and Pump Control:

- The 120mm PWM fans operate at speeds from 500 to 2000 RPM ( $\pm 10\%$ ), automatically adjusting based on CPU temperature. This is controlled via your motherboard's BIOS or fan control software.
- The pump operates continuously to ensure optimal liquid circulation.

### ARGB Lighting Control:

The Iota 240mm AIO supports ARGB independent control. Connect the ARGB cable to your motherboard's 5V 3-pin ARGB header. You can then manage the pump and fan lighting effects using your motherboard's lighting control software (e.g., ASUS Aura Sync, MSI Mystic Light Sync, Gigabyte RGB Fusion, ASRock Polychrome Sync).

The Ocybus Iota L24 features a dot matrix digital display that provides real-time monitoring of your CPU or GPU temperature.

### Ocybus Digital Software:

- The digital display function requires a connection to a USB 2.0 header on your motherboard. Ensure this connection is secure.
- The Ocybus Digital software supports Windows 10 and Windows 11 operating systems.
- To download the software, search for "Ocybus" in your browser or refer to the product manual for the official Ocybus website. Locate "Ocybus Digital" and download the installation package.
- When installing the software, it is recommended to add it to your antivirus software's whitelist to prevent any conflicts.
- The software allows you to switch the temperature display between Celsius and Fahrenheit. (Maximum display temperature is 199°F).

# Supercharged Engine Pump

motor:

**Three-phase Six-pole Motor**

noise:

**≤27dB(A)**

TDP:

**280W**

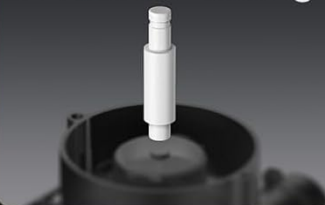


Rotational speed:

**3100±10%RPM**

Axis:

**Ceramic Bearing**



**Large Copper Base**

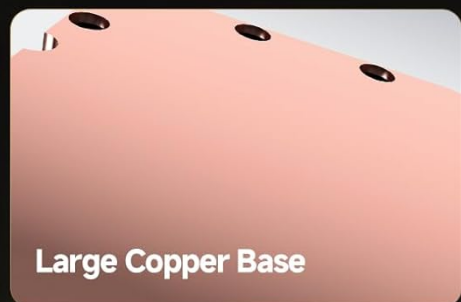


Image: Close-up of the Ocybus Iota L24 pump head, displaying the CPU temperature on its digital screen.

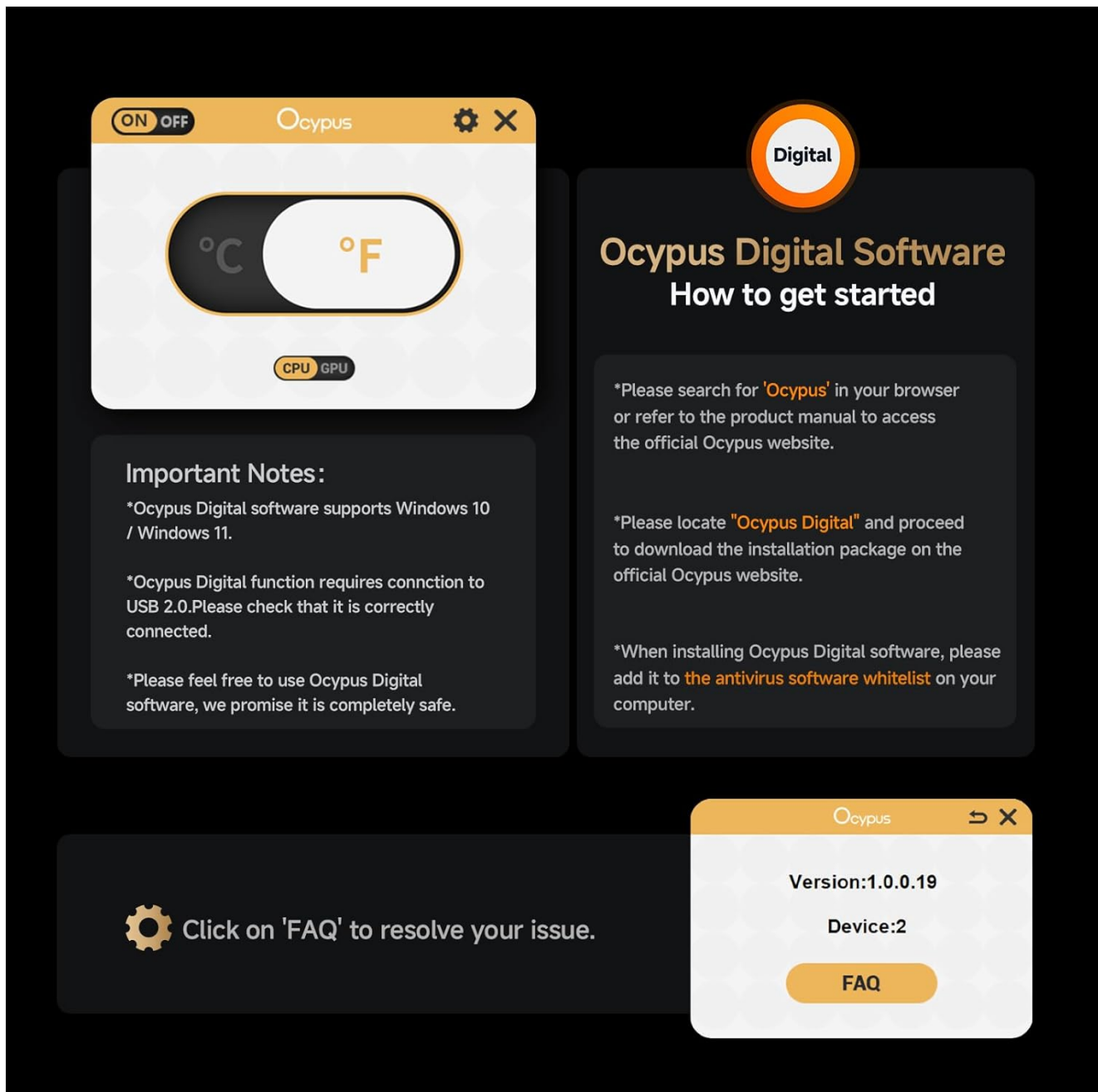


Image: Screenshot of the Ocybus Digital software interface, showing options to switch between Celsius and Fahrenheit, and important notes regarding USB connection and software installation.

## MAINTENANCE

---

Regular maintenance ensures optimal performance and extends the lifespan of your AIO cooler.

- **Dust Cleaning:** Periodically clean the radiator fins and fan blades to prevent dust buildup, which can impede airflow and cooling efficiency. Use compressed air or a soft brush.
- **Check Tubing:** Inspect the liquid tubing for any signs of kinks, leaks, or damage. Ensure connections are secure.
- **Thermal Paste:** While not frequently required, if you remove the pump head from the CPU, reapply a fresh layer of thermal paste before reinstallation.
- **Software Updates:** Keep the Ocybus Digital software updated to the latest version for improved features and stability.

## SPECIFICATIONS

---

Feature	Detail
Product Dimensions	15.15"L x 6.3"W x 7.48"H
Cooling Method	Liquid (Water)
Radiator Size	240mm Aluminum
Fan Size	2 x 120mm
Fan Speed	500~2000 ±10% RPM
Max Airflow	77 CFM
Max Air Pressure	4.65 mmH2O
Noise Level	≤29 dB(A)
Pump Dimensions	70 x 70 x 65mm
Pump Motor	Three-phase Six-pole Motor
Pump Bearing	Ceramic Bearing
Pump Rotational Speed	3100 ±10% RPM
TDP (Thermal Design Power)	280W
Material	Aluminum, Copper, Rubber
Power Connector Type	3-Pin (Pump), 4-Pin PWM (Fans)
Voltage	12 Volts (DC)
Wattage	3.6 watts
Compatible Devices	Desktop PCs
CPU Socket Compatibility	Intel LGA: 115X/1200/1700/1851, AMD: AM4/AM5

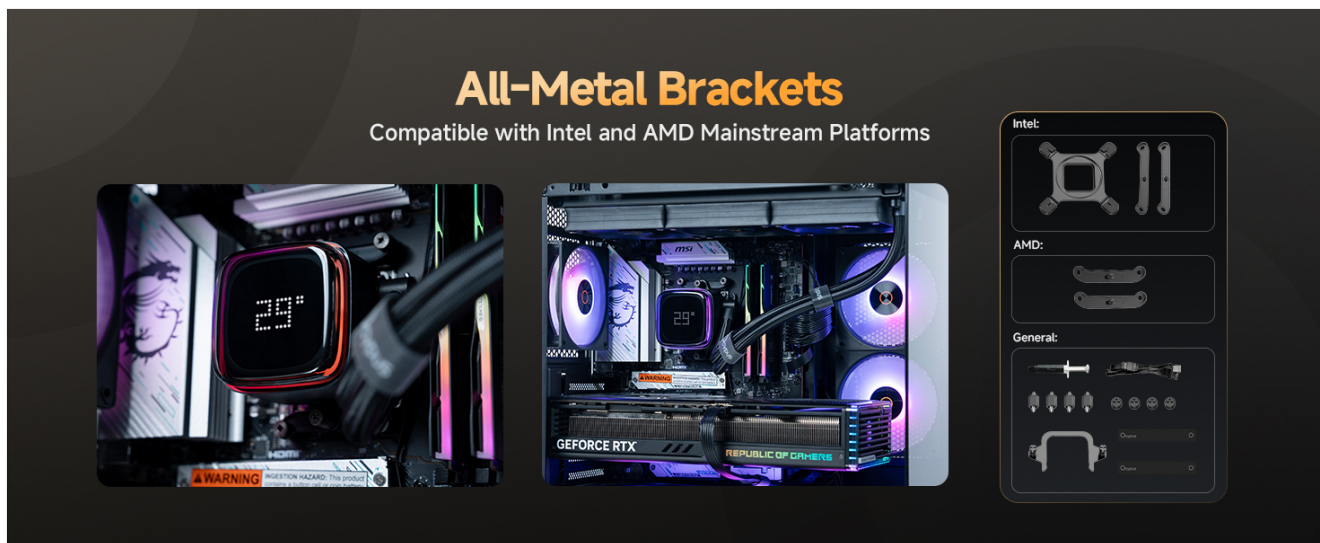


Image: Diagram showing the dimensions of the Ocyus Iota L24 radiator and pump head.

If you encounter issues with your Ocybus Iota L24 AIO cooler, refer to the following common troubleshooting steps.

- **No Temperature Display:**

- Ensure the USB 2.0 cable from the pump head is securely connected to a motherboard USB 2.0 header.
- Verify that the Ocybus Digital software is installed and running correctly.
- Check if the software is whitelisted in your antivirus program.

- **High CPU/GPU Temperatures:**

- Confirm that the pump is running (you may feel a slight vibration or hear a faint hum).
- Check if the fans on the radiator are spinning. If not, ensure they are properly connected to the motherboard.
- Verify that the pump head is securely mounted to the CPU and that thermal paste was applied correctly.
- Ensure there is adequate airflow in your PC case and that the radiator fins are not obstructed by dust.

- **ARGB Lighting Not Working:**

- Ensure the ARGB cable is correctly connected to a 5V 3-pin ARGB header on your motherboard.
- Check your motherboard's lighting control software to ensure ARGB effects are enabled and configured.

- **Unusual Noises:**

- A slight hum from the pump is normal. Excessive gurgling or grinding noises may indicate air bubbles in the loop. Gently tilt your PC case to help dislodge air bubbles.
- Ensure fan blades are not obstructed and are securely mounted.

If these steps do not resolve your issue, please contact Ocybus customer support for further assistance.

## WARRANTY AND SUPPORT

---

The Ocybus Iota L24 AIO CPU Water Cooler comes with a **Three-Year Warranty** from the date of purchase. This warranty covers defects in materials and workmanship under normal use. It does not cover damage caused by improper installation, accident, abuse, misuse, natural disaster, or unauthorized modification.

For warranty claims, technical support, or any questions regarding the use of your product, please contact Ocybus customer service. You can typically find contact information on the official Ocybus website or through your retailer. Please have your purchase receipt and product model number (Iota L24) available when contacting support.