

## JUJIANG EGA-15

# JUJIANG EGA-15 Swing Gate Opener Control Board User Manual

Model: EGA-15

## 1. INTRODUCTION

This manual provides essential information for the safe and efficient installation, operation, and maintenance of the JUJIANG EGA-15 Swing Gate Opener Control Board. Please read this manual thoroughly before attempting any installation or operation to ensure proper functionality and to prevent damage or injury. The JUJIANG EGA-15 is a sophisticated control board designed to manage the operation of swing gate openers, offering various programmable features for enhanced security and convenience.

## 2. SAFETY INFORMATION

- Always disconnect power before performing any installation, maintenance, or repair work.
- Installation should be performed by qualified personnel in accordance with local electrical codes and regulations.
- Ensure all wiring connections are secure and properly insulated.
- Do not operate the gate opener if any part of the system is damaged or malfunctioning.
- Keep children and pets away from the gate area during operation.

## 3. PRODUCT OVERVIEW

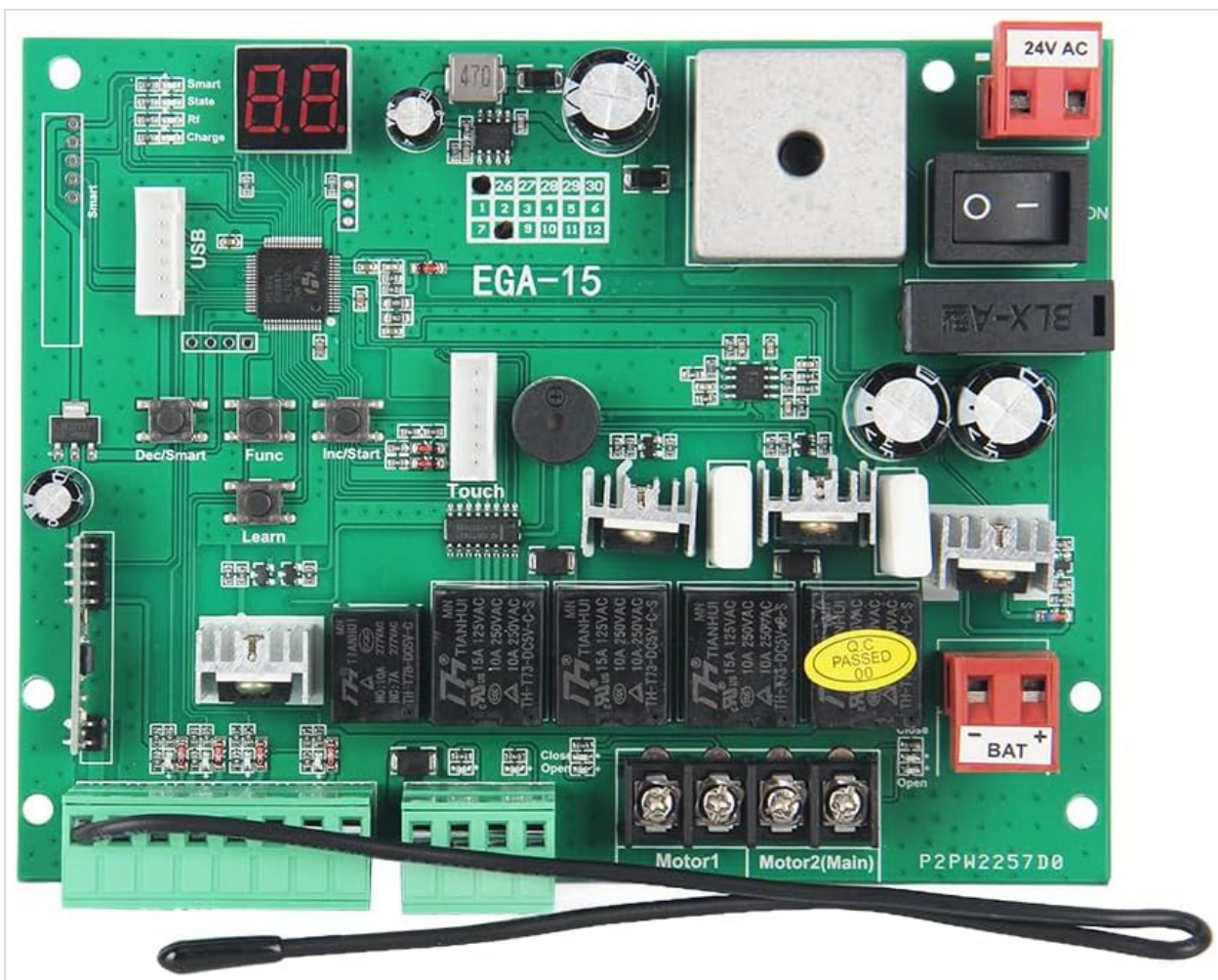


Image 1: The JUJIANG EGA-15 Swing Gate Opener Control Board. This image displays the green circuit board with various components including an LED display, USB port, control buttons, DIP switches, motor terminals, and power connections.

The EGA-15 control board features multiple input/output terminals, an LED display for status and error codes, and programmable buttons for configuration. Key components include:

- **24V AC Input:** Main power supply connection.
- **BAT+ Terminal:** Connection for backup battery.
- **Motor1 & Motor2(Main) Terminals:** Connections for swing gate opener motors.
- **LED Display (8.8.):** Shows operational status, programming values, and error codes.
- **Control Buttons (Dec/Smart, Func, Inc/Start, Touch, Learn):** Used for programming and manual control.
- **DIP Switches:** For setting various operational parameters and modes.
- **USB Port:** Potentially for firmware updates or advanced configuration.
- **Status LEDs (Smart, State, Rf, Charge):** Provide visual feedback on the board's current state.

## 4. SETUP AND INSTALLATION

### 4.1 Wiring Connections

1. **Power Supply (24V AC):** Connect the main 24V AC power supply to the designated red terminal block labeled "24V AC" on the top right of the board. Ensure correct polarity if applicable.
2. **Battery Backup (BAT+):** Connect a compatible backup battery to the red terminal block labeled "BAT+" on the bottom right. Observe correct polarity (+ to +).
3. **Motor Connections:** Connect the gate opener motors to the green terminal blocks labeled "Motor1" and

"Motor2(Main)" at the bottom of the board. Refer to your gate opener's specific wiring diagram for motor connections.

4. **Accessory Connections:** Connect any external accessories such as photocells, keypads, loop detectors, or safety sensors to the appropriate green terminal blocks. Consult the detailed wiring diagram provided with your complete gate opener system for specific terminal assignments.
5. **Antenna:** Connect the RF antenna to the designated port for remote control functionality.

## 4.2 Initial Configuration (DIP Switches)

The DIP switches (labeled 26-30 and 1-12) are used to set fundamental operating parameters. Refer to the specific configuration guide for your gate opener system to correctly set these switches for functions such as:

- Operating mode (e.g., single gate, dual gate)
- Auto-close delay
- Safety sensor activation
- Force settings

## 4.3 Learning Procedure

After all connections are made and DIP switches are set, the system typically requires a learning procedure to set gate travel limits and program remote controls.

- **Gate Limits:** Use the "Learn" button in conjunction with the "Inc/Start" and "Dec/Smart" buttons to teach the board the open and close positions of the gate(s). Follow the specific sequence outlined in your gate opener's main manual.
- **Remote Controls:** Press the "Learn" button briefly, then press a button on your remote control to pair it with the system. The LED display or a specific LED will usually indicate successful pairing.

# 5. OPERATING INSTRUCTIONS

---

## 5.1 Basic Operation

Once configured, the gate opener can be operated via remote control or wired input devices (e.g., push button, keypad). A single press of a programmed remote button typically initiates an open/close cycle. Another press during operation may stop or reverse the gate, depending on the programmed mode.

## 5.2 LED Display and Status Indicators

The "8.8." LED display provides feedback on the board's status, programming steps, and error codes. The "Smart", "State", "Rf", and "Charge" LEDs also indicate various operational conditions:

- **Smart LED:** Indicates smart functions or advanced features are active.
- **State LED:** Shows the current operational state (e.g., idle, opening, closing).
- **Rf LED:** Illuminates when an RF signal (from a remote control) is received.
- **Charge LED:** Indicates the backup battery is charging.

# 6. MAINTENANCE

---

Regular maintenance ensures the longevity and reliable operation of your JUJIANG EGA-15 control board and the entire gate opener system.

- **Visual Inspection:** Periodically inspect the control board for any signs of damage, loose connections, or

corrosion. Ensure the enclosure is sealed to protect against environmental elements.

- **Wiring Check:** Verify that all wiring connections are secure and free from wear or damage.
- **Battery Check:** If a backup battery is installed, check its charge status and condition regularly. Replace if necessary.
- **Cleanliness:** Keep the control board and its enclosure clean and free from dust, debris, and insects.

For maintenance of the gate opener mechanism itself, refer to the specific instructions provided with your gate opener system.

## 7. TROUBLESHOOTING

If you encounter issues with your JUJIANG EGA-15 control board, consult the following troubleshooting guide. For complex problems, contact a qualified technician.

- **Gate Not Responding:**
  - Check main power supply (24V AC) and ensure the power switch on the board is ON.
  - Verify remote control battery and ensure it is properly paired (check Rf LED).
  - Inspect all wiring connections to motors and input devices.
  - Check for any obstructions in the gate's path that might trigger safety sensors.
- **Gate Stops Mid-Cycle:**
  - Check for obstructions.
  - Review DIP switch settings for force limits or auto-reverse sensitivity.
  - Ensure motor connections are secure.
- **LED Display Shows Error Code:**
  - Refer to the specific error code list in your gate opener's main manual for detailed explanations and solutions. Common errors might relate to motor overload, sensor faults, or limit switch issues.
- **Battery Not Charging:**
  - Verify the battery is correctly connected to the BAT+ terminal with correct polarity.
  - Check the battery itself for faults.
  - Ensure the main 24V AC power supply is active.

## 8. SPECIFICATIONS

Model Number	EGA-15
Manufacturer	JUAIJING
Item Weight	2.88 ounces
Product Dimensions	5.91 x 1.97 x 8.27 inches
Included Components	Control board
Batteries Included	No
Batteries Required	No

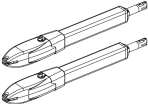

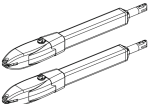
## 9. WARRANTY AND SUPPORT

For warranty information, please refer to the documentation provided at the time of purchase or contact your seller directly. JUJIANG products are typically covered by a manufacturer's warranty against defects in materials and workmanship.

For technical support or further assistance, please contact the JUJIANG customer service department or your authorized dealer. When contacting support, please have your product model number (EGA-15) and purchase details readily available.

© 2025 JUJIANG. All rights reserved. Information in this manual is subject to change without notice.

### Related Documents - EGA-15

<div><p><b>Dual Swing Gate Opener User Manual</b></p><p>Model: PKM-C026-400-1</p><ul style="list-style-type: none"><li>• Please read and follow all safety precautions, instructions and warnings before installation and use.</li><li>• Please check if the opener are required to comply with local codes.</li><li>• Read the manual before installation.</li></ul></div>	<p><a href="#">JUJIANG PKM-C026-400-1 Dual Swing Gate Opener User Manual</a></p> <p>Comprehensive user manual for the JUJIANG PKM-C026-400-1 Dual Swing Gate Opener, detailing safety precautions, installation steps, wiring diagrams, remote control operation, system settings, maintenance, and troubleshooting.</p>
<div><p><b>Dual Swing Gate Opener User Manual</b></p><p>Model: PKM-C01-300</p><ul style="list-style-type: none"><li>• Please read and follow all safety precautions, instructions and warnings before installation and use.</li><li>• Please check if the opener are required to comply with local codes.</li><li>• Read the manual before installation.</li></ul></div>	<p><a href="#">JUJIANG Dual Swing Gate Opener User Manual PKM-C01-300</a></p> <p>User manual for the JUJIANG Dual Swing Gate Opener, model PKM-C01-300. Provides detailed instructions on safety, installation, technical specifications, operation, maintenance, and troubleshooting for automatic gate systems.</p>
<div><p><b>Dual Swing Gate Opener User Manual</b></p><p>Model: PKM-C026-400</p><ul style="list-style-type: none"><li>• Please read and follow all safety precautions, instructions and warnings before installation and use.</li><li>• Please check if the opener are required to comply with local codes.</li><li>• Read the manual before installation.</li></ul></div>	<p><a href="#">JUJIANG PKM-C026-400 Dual Swing Gate Opener User Manual</a></p> <p>Comprehensive user manual for the JUJIANG PKM-C026-400 Dual Swing Gate Opener, covering safety, installation, part list, technical specifications, wiring, operation, maintenance, and troubleshooting.</p>

