

FFsign 3831

FFsign 3831 Roller Brush & Filter Replacement Kit Instruction Manual

For Bissell Crosswave Hard Floor Expert 3831 and HF2 3845N Vacuums

1. INTRODUCTION

This manual provides instructions for the installation, maintenance, and general use of the FFsign 3831 Roller Brush and Filter Replacement Kit. These parts are designed to maintain the performance of your compatible Bissell Crosswave wet dry vacuum.

2. COMPATIBILITY

The FFsign 3831 Roller Brush and Filter Replacement parts are specifically designed for use with the following Bissell Crosswave models:

- Bissell CrossWave Hard Floor Expert 3831 Vacuum
- Bissell CrossWave HF2 3845N Vacuum

Please verify your vacuum cleaner model number before installation to ensure proper fit and function.

Compatible with Bissell Crosswave Hard Floor

Expert Vacuum 3831
HF2 3845 3847 3848

for part No. B0555, 1637755, 1632973



Figure 2.1: Visual representation of compatible Bissell Crosswave models and key dimensions of the replacement parts.

3. PACKAGE CONTENTS

Your FFsign 3831 Replacement Kit includes the following components:

- 2 x 3831 Replacement Roller Brushes
- 2 x 3831 Replacement Vacuum Filters
- 1 x Cleaning Tool



Figure 3.1: Contents of the FFsign 3831 Roller Brush & Filter Replacement Kit.

4. INSTALLATION INSTRUCTIONS

4.1. Replacing the Roller Brush

Follow these steps to replace the roller brush in your Bissell Crosswave vacuum:

1. **Step 1:** Ensure the vacuum is powered off and unplugged. Remove the brush roll cover.
2. **Step 2:** Pull the brush roll tab to remove the old brush roll. Pull the yellow tab of the brush roll filter to remove it.
3. **Step 3:** Place the end of the new brush into the left side of the foot. Press the tab of the brush down so it locks into place.
4. **Step 4:** Replace the brush roll window by aligning it with the foot. Press the window down until it clicks into place.

Easy to Install

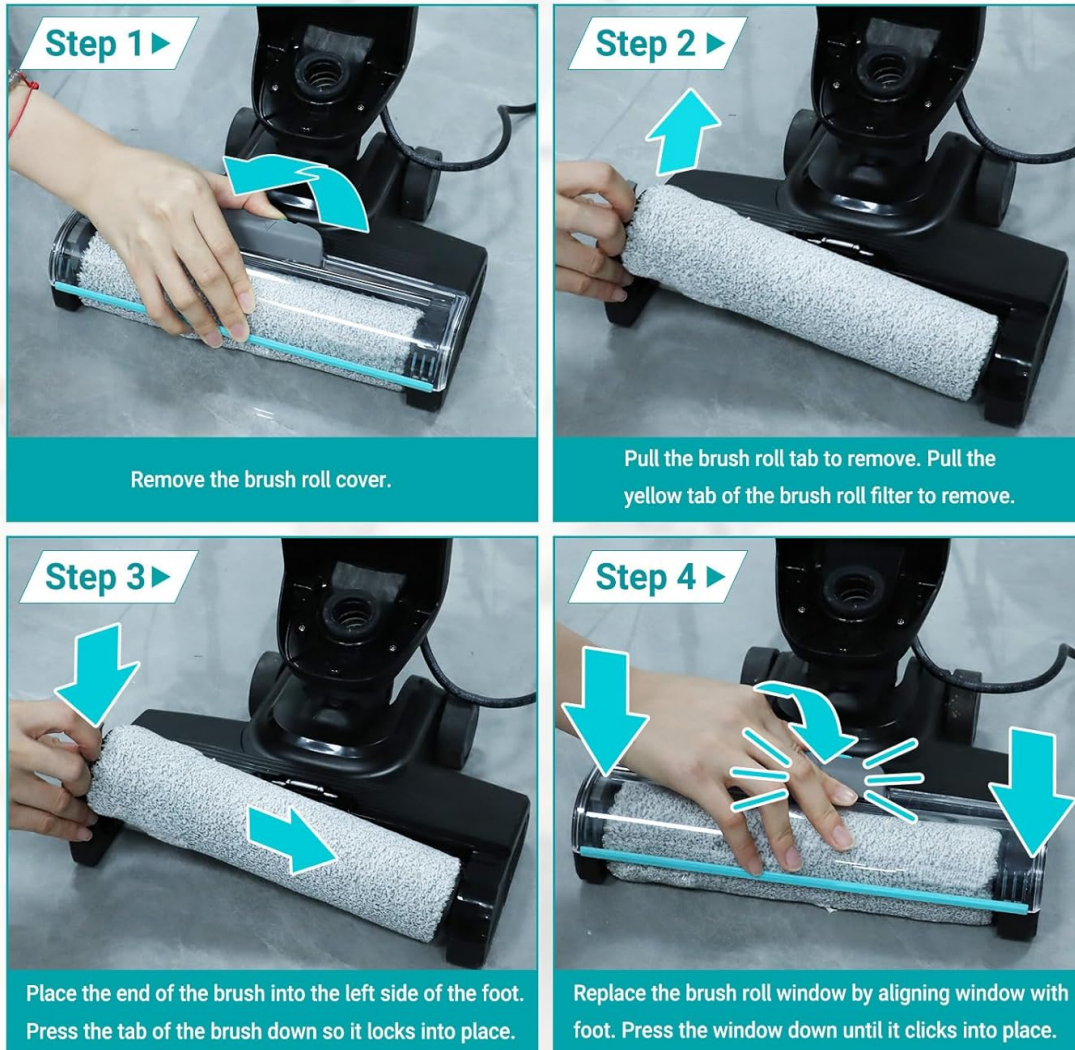


Figure 4.1: Step-by-step guide for roller brush installation.

4.2. Replacing the Filter

To replace the vacuum filter:

1. **Step 1:** Ensure the vacuum is powered off and unplugged. Locate the filter compartment, typically near the dirty water tank.
2. **Step 2:** Remove the old filter.
3. **Step 3:** Insert the new FFsign 3831 filter into the compartment, ensuring it is seated correctly.
4. **Step 4:** Close the filter compartment securely.

The replacement filters are designed to trap particles as small as 0.3 microns, contributing to cleaner air output.



Figure 4.2: Illustration of the filter's particle capture capability.

5. MAINTENANCE

Regular cleaning and timely replacement of your roller brush and filter are essential for optimal vacuum performance.

5.1. Cleaning the Roller Brush and Filter

Both the roller brush and filter are washable and reusable:

- Remove the brush roll and filter as described in the installation section.
- Rinse both components thoroughly under cold running water.
- Use the provided cleaning tool to remove any tangled hair or debris from the brush roll.
- Allow the brush roll and filter to air dry completely before reinstalling them into the vacuum. Ensure they are fully dry to prevent mold or mildew growth.

Washable & Reusable

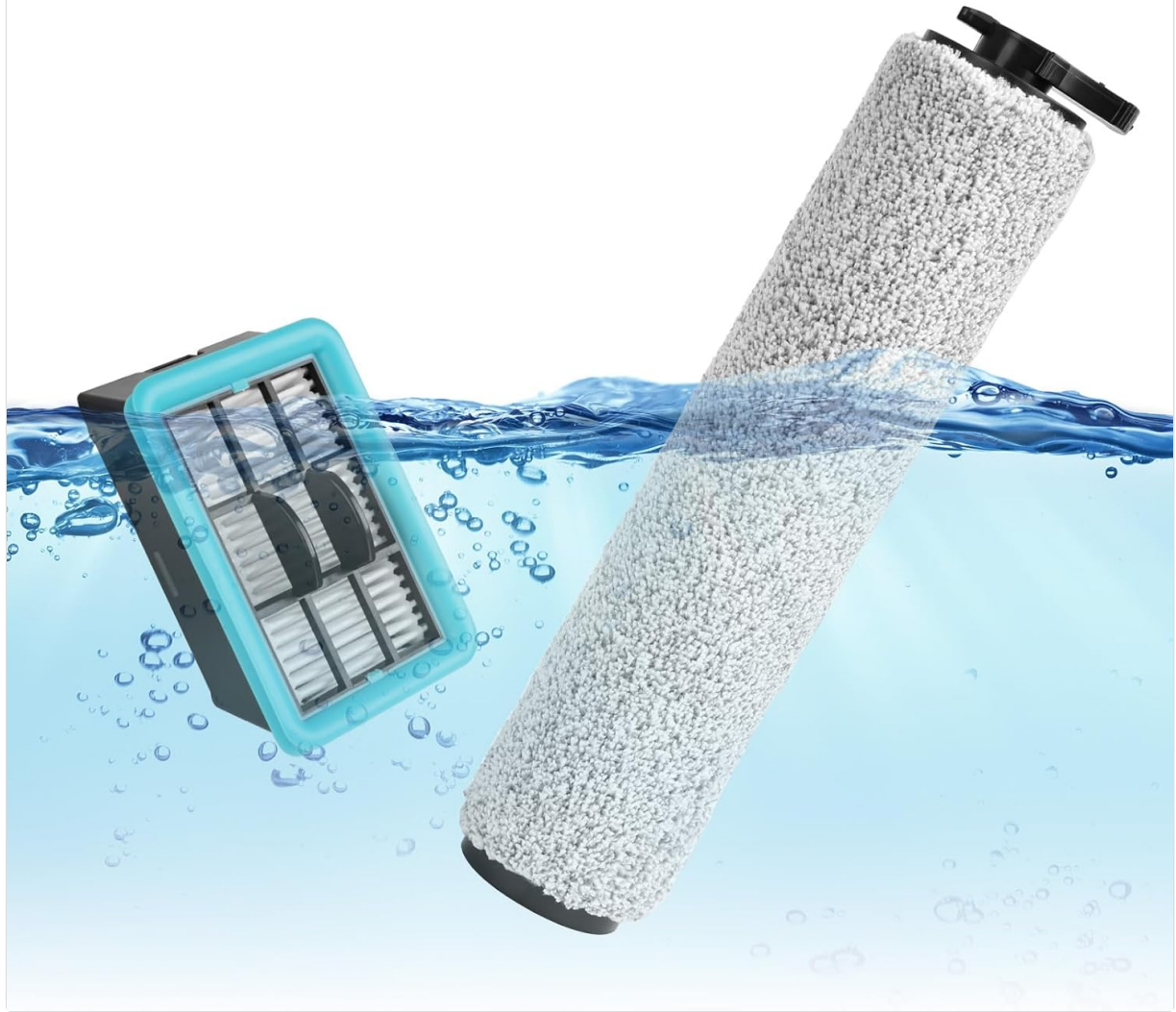


Figure 5.1: Washable and reusable nature of the roller brush and filter.

5.2. Replacement Frequency

It is recommended to replace the FFsign 3831 roller brush and filter every 3-6 months, depending on usage frequency and cleaning habits. Regular replacement ensures consistent cleaning performance and extends the life of your vacuum.

6. SPECIFICATIONS

Brand	FFsign
Model Number	3831
Compatible Devices	Bissell CrossWave Hard Floor Expert 3831, HF2 3845N
Material	Soft microfiber and nylon (Roller Brush)
Filter Grade	H13 Grade HEPA
Reusability	Reusable
Number of Pieces	5 (2 brush rolls, 2 filters, 1 cleaning tool)

7. TROUBLESHOOTING

If you experience issues after replacing your roller brush or filter, consider the following:

- **Reduced Suction:** Ensure the filter is correctly seated and not clogged. Check for any blockages in the vacuum's air pathways.
- **Poor Cleaning Performance:** Verify the roller brush is installed correctly and spinning freely. Ensure it is clean and free of debris.
- **Unusual Noises:** Check if the roller brush is properly locked into place and not obstructed by foreign objects.
- **Water Leaks:** Confirm that all components, including the brush roll cover and dirty water tank, are securely closed after maintenance.

If problems persist, refer to your original Bissell Crosswave vacuum manual or contact FFsign customer support.

8. SUPPORT

For further assistance or inquiries regarding your FFsign 3831 Roller Brush & Filter Replacement Kit, please contact FFsign customer support through the retailer where the product was purchased. For information regarding your Bissell Crosswave vacuum, please refer to the manufacturer's official documentation or support channels.