

BPXX D463B

BPXX Bluetooth Thermal Shipping Label Printer D463B User Manual

Model: D463B

1. INTRODUCTION

This manual provides detailed instructions for the setup, operation, and maintenance of your BPXX Bluetooth Thermal Shipping Label Printer, Model D463B. This printer is designed for efficient and clear printing of various thermal labels, including 4x6 inch shipping labels, with a resolution of 203 DPI. It supports both Bluetooth connectivity via the 'Ezlabel' mobile application and USB connection to computers.

2. PACKING LIST

Please verify that all items listed below are included in your package:

- 1 x BPXX D463B Thermal Printer
- 1 x USB Cable
- 1 x User Manual
- 1 x USB Flash Drive (containing drivers)
- 1 x Folding Label (sample roll)
- 1 x Power Cord
- 1 x Power Adapter

►► Packing List



2. USB Cable



3. User Manual



1. D463B Thermal Printer



4. USB Flash Drive



5. Folding Label



6. Power Cord



7. Power Adapter

Image: Contents of the BPXX D463B Thermal Printer package, including the printer, USB cable, user manual, USB flash drive, sample labels, power cord, and power adapter.

3. SETUP GUIDE

3.1 Hardware Connection

1. Connect the power adapter to the printer's power port and plug the power cord into an electrical outlet.
2. Open the printer cover and load the thermal labels. Ensure the labels are facing the correct direction for printing and are properly aligned within the guide rails.
3. Close the printer cover securely.



Image: The BPXX D463B thermal printer with a label being printed, alongside a smartphone displaying the 'Ezlabel' app interface and various label types.

3.2 Software and Driver Installation

3.2.1 Mobile App (Bluetooth Connection)

For mobile printing, download the 'Ezlabel' application from your device's app store (available for iOS and Android).

1. Search for 'Ezlabel' in the App Store (iOS) or Google Play Store (Android).
2. Download and install the application.
3. Enable Bluetooth on your mobile device.
4. Open the 'Ezlabel' app and follow the in-app instructions to connect to your BPXX D463B printer via Bluetooth.

3.2.2 Computer Driver (USB Connection)

For computer printing, install the appropriate drivers for your operating system (Windows, Mac OS, Linux, ChromeOS). Drivers are provided on the included USB flash drive or can be downloaded from the official website.

- Insert the provided USB flash drive into your computer.
- Locate and run the installer for your operating system.
- Follow the on-screen prompts to complete the driver installation.
- Alternatively, download drivers from: [BPXX Driver Download](#)

Easy to Connect Printing

Bluetooth Connection

Use "Ezlabel" APP to Connect to Bluetooth and Print



USB Connection

One-click Installation of Print Drivers for Easy Printing



Image: Diagram illustrating both Bluetooth connectivity with a mobile device (iOS, Android, iPad) via the 'Ezlabel' app and USB connectivity with a computer (Windows, Linux, ChromeOS, Mac OS) for the BPXX D463B printer.

4. OPERATING INSTRUCTIONS

4.1 Loading Labels

Ensure the thermal labels are loaded correctly for optimal printing. The printer supports thermal labels with widths

ranging from 1 to 4.5 inches, including standard 4x6 inch shipping labels.

1. Open the top cover of the printer.
2. Place the roll of thermal labels into the label compartment, ensuring the printable side faces upwards.
3. Feed the first label through the printer's output slot until it is slightly extended.
4. Adjust the label guides to fit the width of your labels snugly, without being too tight.
5. Close the top cover. The printer will automatically detect the label size and calibrate.



Image: The BPXX D463B thermal printer demonstrating support for various label widths from 1 to 4.5 inches, including different shapes and sizes of thermal labels.

4.2 Printing via Bluetooth (Mobile App)

1. Ensure the printer is powered on and connected to the 'Ezlabel' app via Bluetooth.

2. Open the 'Ezlabel' app on your mobile device.
3. Select or create your desired label design. The app includes preset templates for various label sizes.
4. Confirm print settings such as label size and quantity.
5. Initiate the print command from the app.

4.3 Printing via USB (Computer)

1. Connect the printer to your computer using the provided USB cable.
2. Ensure the printer drivers are correctly installed.
3. Open the document or application from which you wish to print (e.g., a PDF viewer, shipping software).
4. Select the BPXX D463B printer from your printer options.
5. Adjust print settings as needed (e.g., paper size to 4x6 inches for shipping labels).
6. Send the print command.

4.4 Supported Platforms and Print Quality

The BPXX D463B printer is compatible with major shipping carriers and e-commerce platforms, facilitating the printing of shipping labels, return labels, and postage labels.

- **Shipping Carriers:** FedEx, UPS, USPS, DHL, EasyPost, etc.
- **E-commerce Platforms:** Amazon, Shopify, Etsy, eBay, Walmart, etc.

The printer utilizes a high-quality thermal print head and advanced algorithms to deliver clear and sharp barcodes and text at 203 DPI resolution. It achieves a high-speed output of 152mm/s, capable of printing approximately 72 4x6 inch shipping labels per minute.

Support Multiple Platforms

Print any Shipping Labels from the Platforms



Image: Visual representation of the BPXX D463B thermal printer's compatibility with numerous shipping and e-commerce platforms, including Amazon, eBay, Shopify, UPS, FedEx, and USPS.

Print Clearly



Image: Close-up view highlighting the 203 DPI print resolution of the BPXX D463B thermal printer, demonstrating clear and sharp output for barcodes and text.

Fast Printing & Easily Scan

152 mm/s Print Speed

72 pcs Minute

5. MAINTENANCE

- **Cleaning the Print Head:** Use an alcohol swab or a specialized thermal printer cleaning pen to gently wipe the print head. Ensure the printer is off and cooled down before cleaning.
- **Cleaning the Exterior:** Wipe the exterior of the printer with a soft, damp cloth. Avoid using harsh chemicals or abrasive materials.
- **Dust Removal:** Periodically use compressed air to clear any dust or paper debris from inside the label compartment.

6. TROUBLESHOOTING

If you encounter issues with your BPXX D463B printer, refer to the following common problems and solutions:

- **Printer Not Responding:**
 - Ensure the power cord is securely connected and the printer is turned on.
 - For Bluetooth connection, verify that Bluetooth is enabled on your device and the printer is paired within the 'Ezlabel' app.
 - For USB connection, check the USB cable connection and ensure drivers are correctly installed. Try a different USB port or cable.
- **Poor Print Quality (Faint/Streaky Prints):**
 - Clean the print head as described in the Maintenance section.
 - Ensure you are using high-quality thermal labels.
 - Check print density settings in the 'Ezlabel' app or printer preferences on your computer.
- **Labels Not Feeding Correctly:**
 - Verify that labels are loaded correctly and aligned with the guide rails.
 - Ensure there are no obstructions in the label path.
 - Perform a label calibration from the printer settings or app if available.
- **Printer Offline Error:**
 - Restart both the printer and your computer/mobile device.
 - Re-establish the Bluetooth or USB connection.
 - Check printer status in your operating system's printer settings.

7. PRODUCT SPECIFICATIONS


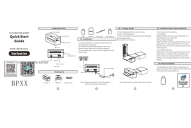



Model Name	D463B
Brand	BPXX
Printing Technology	Thermal
Connectivity Technology	Bluetooth, USB
Maximum Print Resolution	203 x 203 Dots Per Inch (DPI)
Maximum Print Speed	152 mm/s (72 labels per minute)
Maximum Media Size	4 x 6 inch
Supported Label Width	1 - 4.5 inches
Compatible Devices	PC (Windows, Mac OS, Linux, ChromeOS), Smartphones (iOS, Android)
Control Method	App ('Ezlabel'), USB
Product Dimensions	7.3"D x 3.3"W x 3.3"H


Item Weight	1.6 pounds
Included Components	Printer, USB Cable, User Manual, USB Flash Drive, Sample Labels, Power Cord, Power Adapter

8. WARRANTY AND SUPPORT

The BPXX D463B Thermal Shipping Label Printer comes with a limited warranty. For specific warranty terms and conditions, please refer to the documentation included with your product or contact BPXX customer support. For technical assistance, troubleshooting, or any inquiries regarding your product, please contact BPXX customer support through the official website or the contact information provided in your product packaging.

Related Documents - D463B

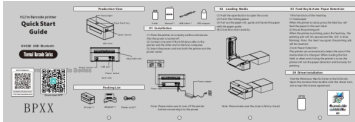
	<p>BPXX D463B Thermal Barcode Printer User Manual</p> <p>Comprehensive user manual for the BPXX D463B Thermal Barcode Printer, covering installation, operation, troubleshooting, and maintenance for USB and Bluetooth connectivity across Windows, macOS, Linux, iOS, Android, and ChromeOS.</p>
	<p>BPXX D463B-USB+Bluetooth Thermal Barcode Printer Quick Start Guide</p> <p>Quick start guide for the BPXX D463B-USB+Bluetooth thermal barcode printer, covering installation, media loading, driver setup, LED status, specifications, and maintenance.</p>
	<p>BPXX D465B Thermal Barcode Printer User Manual: Installation & Operation Guide</p> <p>Comprehensive user manual for the BPXX D465B Thermal Barcode Printer. Covers installation (USB/Bluetooth), setup, printing guides for Windows, macOS, Linux, iOS, Android, and ChromeOS, troubleshooting, and maintenance.</p>
	<p>BPXX P81 A4 Mobile Thermal Printer User Manual</p> <p>This user manual provides comprehensive instructions for the BPXX P81 A4 Mobile Thermal Printer, covering installation, setup, and printing procedures for Windows, macOS, iOS, and Android devices. Learn about LED status, specifications, and maintenance.</p>
	<p>BPXX D465B Thermal Barcode Printer: Quick Start Guide for Setup and Operation</p> <p>Get started with your BPXX D465B thermal barcode label printer. This comprehensive quick start guide covers installation, media loading, driver setup, specifications, LED status, and maintenance tips for optimal performance.</p>



[BPXX P81 Portable Printer: Quick Start Guide and User Manual](#)

Get started with your BPXX P81 portable printer. This guide covers package contents, installation, connecting to your device, and maintenance for your A4 thermal printer.

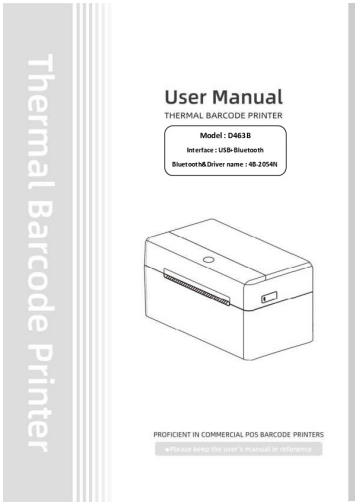
Documents - BPXX – D463B



[BPXX D463B-USB+Bluetooth Thermal Barcode Printer Quick Start Guide](#)

Quick start guide for the BPXX D463B-USB+Bluetooth thermal barcode printer, covering installation, media loading, driver setup, LED status, specifications, and maintenance.

lang:en score:35 filesize: 1.07 M page_count: 2 document date: 2023-03-15



[BPXX D463B Thermal Barcode Printer User Manual](#)

Comprehensive user manual for the BPXX D463B Thermal Barcode Printer, covering installation, operation, troubleshooting, and maintenance for USB and Bluetooth connectivity across Windows, macOS, Linux, iOS, Android, and ChromeOS.

lang:en score:28 filesize: 5.81 M page_count: 87 document date: 2023-08-15