

Manuals+

[Q & A](#) | [Deep Search](#) | [Upload](#)

manuals.plus /

› [E-YEEGER](#) /

› [E-YEEGER S60 Dash Cam User Manual](#)

E-YEEGER S60

E-YEEGER S60 Dash Cam User Manual

2.5K Front and Rear Dual Dash Camera

1. INTRODUCTION

Thank you for choosing the E-YEEGER S60 Dash Cam. This device is designed to provide comprehensive video recording of your driving experience, enhancing safety and providing crucial evidence in case of incidents. Featuring 2.5K front and 1080P rear cameras, superior night vision, and advanced safety features like G-Sensor and Loop Recording, the S60 is a reliable companion for your vehicle. Please read this manual thoroughly before use to ensure proper installation and operation.

2. PACKAGE CONTENTS

Please check the package contents upon opening. If any items are missing or damaged, please contact customer support.

- 1 x E-YEEGER S60 Dash Cam (Front Camera)
- 1 x Rear Camera
- 1 x User Manual
- 1 x 32GB SD Card (pre-installed into S60)
- 1 x Car Charger (11.5ft)
- 1 x 360° Suction Mount



Image: E-YEEGER S60 Dash Cam, showing the main unit, rear camera, and included 32GB SD card.

3. PRODUCT OVERVIEW

The E-YEEGER S60 Dash Cam features a compact design with a 2-inch IPS screen for clear viewing and easy operation. It records in 2.5K resolution for the front camera and 1080P for the rear camera, providing comprehensive coverage.

Key Features:

- **2.5K Front & 1080P Rear Cameras:** High-resolution recording for clear video evidence.
- **Superior Night Vision:** Equipped with a starlight night vision sensor and F1.8 aperture 6-layer glass lens for clear footage in low-light conditions.
- **G-Sensor:** Automatically locks and saves footage upon detecting sudden collisions or impacts.
- **Loop Recording:** Overwrites the oldest unlocked videos when the memory card is full, ensuring continuous recording.
- **24-Hour Parking Monitor:** Provides time-lapse recording in parking mode (requires hardwire kit, not included).
- **2-inch IPS Display:** User-friendly interface for easy navigation and video playback.
- **Adjustable Suction Cup:** Allows 360° rotation for optimal viewing and recording angles.
- **USB-C Compatibility:** Modern and flexible power connection.



Image: Dash cam installed in a car, highlighting its 2-inch LCD, 2.5K Dual HD recording, Super Night Vision, G-sensor, Loop Recording, and included 32GB card.

DUAL VISION, TOTAL PROTECTION

Ultra Vision Recording

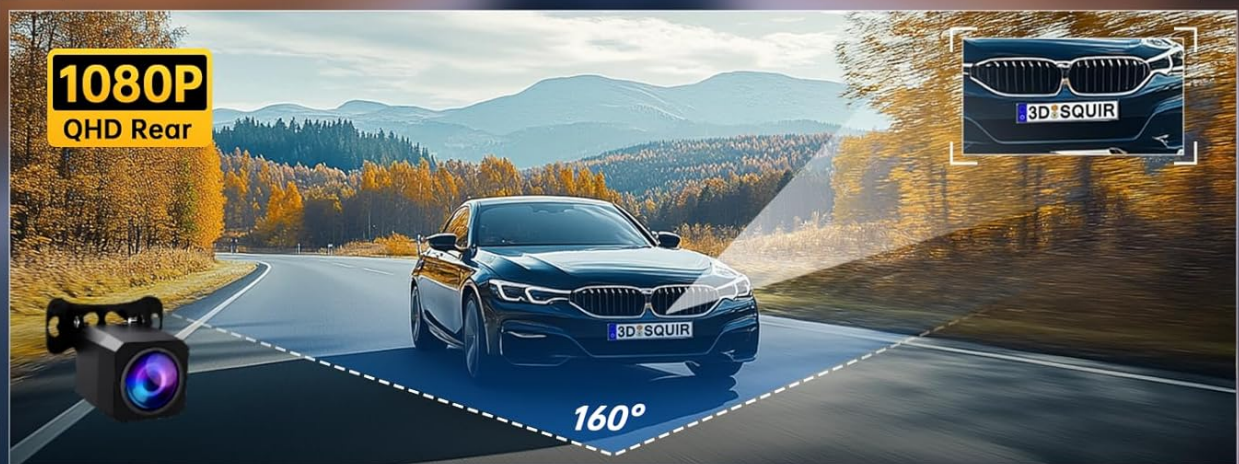


Image: Illustration of the dual vision recording, showing the 2.5K front camera with a 170-degree view and the 1080P rear camera with a 160-degree view.

SUPER NIGHT VISION

Even at night, small details can be captured clearly.



Super
Sensor



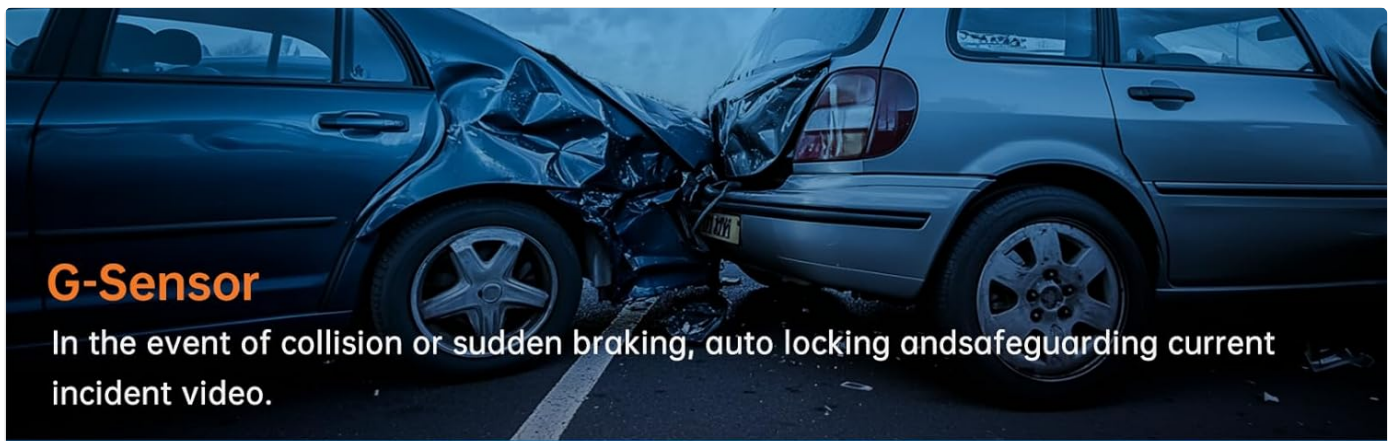
F1.8
Aperture



6-Glass
Lens



Image: Depiction of the Super Night Vision capability, emphasizing the F1.8 aperture and 6-glass lens for clear night recordings.



G-Sensor

In the event of collision or sudden braking, auto locking and safeguarding current incident video.

Seamless Loop Recording Contains 32G high-speed SD card

The dash cam will automatically overwrite the oldest videos when the memory card is full eliminating the need for manual deletion and ensuring you never miss a moment on the road.



Image: Explaining the G-Sensor for collision detection and seamless loop recording for continuous video capture.

MINI BODY & 2" IPS SCREEN

Rotatable brackets for easy Installation, the minlature design ensures It can be discreetly hidden behind the rearview mirror, without obstructing your view



Image: Illustrates the compact size of the dash cam, its 2-inch IPS screen, and the adjustable suction cup mount with 150-degree and 360-degree rotation.



Image: Shows the dash cam connected via a USB-C cable, highlighting its modern connectivity.



Image: Demonstrates the dash cam's extreme durability, capable of operating in temperatures ranging from -4°F to 165°F.

4. SETUP AND INSTALLATION

Follow these steps to properly install your E-YEEGER S60 Dash Cam.

4.1 Inserting the SD Card

1. Ensure the dash cam is powered off.
2. Locate the SD card slot on the side of the dash cam.
3. Insert the provided 32GB SD card (or another compatible Class 10 or higher, up to 256GB) with the gold contacts facing the back of the camera until it clicks into place.
4. To remove, gently push the card until it pops out.

4.2 Installing the Front Camera

1. Clean the windshield area where you intend to mount the dash cam. Ensure it is free of dust and grease.

2. Attach the suction mount to the dash cam.
3. Press the suction cup firmly against the windshield, ideally behind the rearview mirror to avoid obstructing your view.
4. Flip the lever on the suction cup to secure it.
5. Adjust the camera angle using the rotatable bracket to ensure the lens captures the road ahead clearly.

4.3 Installing the Rear Camera

1. Identify a suitable location for the rear camera, typically on the rear windshield, ensuring a clear view.
2. Clean the mounting surface thoroughly.
3. Attach the rear camera using its adhesive pad or screws (if applicable).
4. Route the rear camera cable to the front dash cam. Conceal the cable along the vehicle's headliner and A-pillars for a neat installation.
5. Connect the rear camera cable to the designated port on the main dash cam unit.

4.4 Connecting Power

1. Plug the small end of the car charger cable into the USB-C port on the dash cam.
2. Plug the larger end of the car charger into your vehicle's 12V cigarette lighter socket.
3. Route the power cable neatly to avoid interference with driving controls.

5. OPERATING INSTRUCTIONS

Learn how to operate your E-YEEGER S60 Dash Cam's various functions.

5.1 Power On/Off

- **Automatic:** The dash cam will automatically power on and begin recording when your vehicle's ignition is turned on (and power is supplied to the 12V socket). It will power off automatically shortly after the ignition is turned off.
- **Manual:** Press and hold the Power button (usually marked with a power symbol) to manually turn the dash cam on or off.

5.2 Recording Modes

- **Normal Recording:** When powered on, the dash cam automatically starts continuous loop recording. Videos are saved in segments (e.g., 1, 3, or 5 minutes) and the oldest unlocked files are overwritten when the SD card is full.
- **Emergency Recording (G-Sensor):** If the built-in G-Sensor detects a sudden impact or collision, the current video segment will be automatically locked and protected from being overwritten. These files are stored in a separate folder.
- **Parking Monitor:** With a hardwire kit (not included) connected, the dash cam can monitor your vehicle while parked. It typically uses time-lapse recording or motion detection to save power and storage space. Refer to the hardwire kit's manual for specific setup.

5.3 Menu Navigation

- Use the navigation buttons (Up, Down, OK, Menu) to browse through settings on the 2-inch IPS screen.
- Press the 'Menu' button to enter the settings interface.
- Use 'Up' and 'Down' to scroll through options.
- Press 'OK' to select an option or confirm a setting.
- Press 'Menu' again to exit the settings.

5.4 Video Playback

1. Stop recording by pressing the 'OK' button if currently recording.
2. Press the 'Mode' button (often labeled 'M') to switch to playback mode.
3. Use 'Up' and 'Down' buttons to navigate through recorded video files.

4. Press 'OK' to play the selected video.
5. Press 'OK' again to pause/resume playback.
6. Press 'Mode' to exit playback mode.

6. MAINTENANCE

Proper maintenance ensures the longevity and optimal performance of your dash cam.

6.1 Formatting the SD Card

It is recommended to format the SD card regularly (e.g., once a month) to prevent data corruption and ensure smooth recording. Formatting will erase all data on the card, so back up any important files first.

1. Power on the dash cam.
2. Enter the 'Menu' settings.
3. Navigate to the 'Format' option.
4. Confirm the formatting process.

6.2 Cleaning the Dash Cam

- Use a soft, dry cloth to clean the dash cam body.
- For the lens, use a lens cleaning cloth or a microfiber cloth specifically designed for optics. Do not use abrasive materials or chemical cleaners.
- Ensure the windshield area where the suction cup is mounted is clean to maintain a strong grip.

7. TROUBLESHOOTING

If you encounter issues with your dash cam, refer to the following common problems and solutions.

Problem	Possible Cause	Solution
Dash cam does not power on.	No power supply; faulty charger; loose connection.	Check car charger connection; try another 12V socket; ensure vehicle ignition is on.
Dash cam turns off automatically.	Low battery; power supply issue; G-Sensor sensitivity too high.	Ensure continuous power supply; reduce G-Sensor sensitivity in settings.
Recording stops or freezes.	SD card error; incompatible SD card; full SD card.	Format the SD card; use a Class 10 or higher SD card; replace SD card if damaged.
Video quality is poor.	Dirty lens; protective film still on lens; incorrect resolution setting.	Clean the lens; remove any protective film; check video resolution settings.
Rear camera not working.	Loose connection; faulty cable/camera.	Check the connection of the rear camera cable to the main unit.

If the problem persists after trying these solutions, please contact E-YEEGER customer support.

8. SPECIFICATIONS

Detailed technical specifications for the E-YEEGER S60 Dash Cam.

Feature	Description
---------	-------------

Feature	Description
Brand	E-YEEGER
Model	S60
Orientation	Front & Rear
Video Capture Resolution	Front: 2.5K (2560*1440P), Rear: 1080P
Screen	2-inch IPS Display
Lens Aperture	F1.8
Front Lens Angle	170° Ultra Wide Angle
Rear Lens Angle	160° (approximate, based on dual vision image)
Storage	Supports up to 256GB Micro SD Card (Class 10 or higher)
Connectivity Technology	USB (Type-C Port)
Special Features	Built-In Microphone, Display, Speaker, Loop Recording, G-Sensor, Automatic Incident Detection, WDR & HDR, Super Infrared Night Vision
Mounting Type	Windshield Mount (360° Suction Mount)
Operating Temperature	-4°F to 165°F (-20°C to 74°C)

9. WARRANTY AND SUPPORT

E-YEEGER is committed to providing high-quality products and excellent customer service.

- **Warranty:** The E-YEEGER S60 Dash Cam comes with a 10-year free warranty.
- **Replacement & Refund:** Enjoy a 12-month replacement service and a 45-day refund guarantee.
- **Technical Support:** Lifetime professional technical support is available.

For any questions, technical assistance, or warranty claims, please do not hesitate to contact us at support@customerafter-sales.com.