

manuals.plus /

› [PSIER](#) /

› [PSIER Open Ear Headphones Bluetooth 5.3 Bone Conduction Headphones User Manual](#)

PSIER SP06

PSIER Open Ear Headphones User Manual

Model: SP06

Brand: PSIER

INTRODUCTION

This manual provides comprehensive instructions for the setup, operation, maintenance, and troubleshooting of your PSIER Open Ear Headphones, Model SP06. These headphones are designed to offer a comfortable, open-ear listening experience with advanced audio technology and extended battery life, suitable for various activities including daily use, running, and workouts.



Image: PSIER Open Ear Headphones with their charging case, showcasing the sleek black design and the digital display on the case.

WHAT'S IN THE BOX

Upon unboxing your PSIER Open Ear Headphones, please verify that all the following components are included:

- Open Ear Earbuds (1 pair)
- User Manual (1)
- USB-C Charging Cable (1)
- LED Digital Display Charging Case (1)

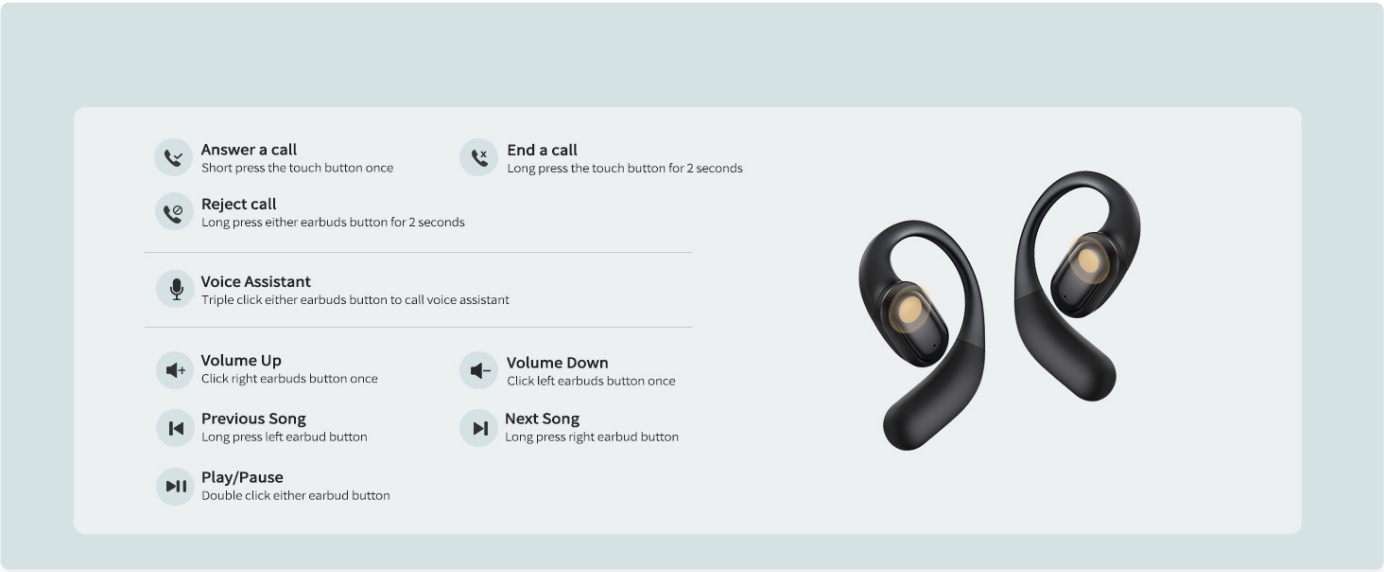


Image: A visual representation of the product contents, including the headphones, charging case, USB-C cable, and user manual.

PRODUCT OVERVIEW

The PSIER Open Ear Headphones are engineered for comfort, safety, and high-quality audio. Key features include:

- **Open-Ear Design:** Sits around the ear, allowing awareness of surroundings.
- **Lightweight and Comfortable:** Weighing only 13g, made from skin-friendly materials for extended wear.
- **13.2mm Aluminized LCD Dome Speakers:** Deliver crystal-clear HD stereo sound with powerful bass.
- **Directional Acoustic Technology:** Reduces sound leakage by 95% for private listening.
- **Extended Playtime:** Up to 10 hours per earbud, with a total of 40 hours using the charging case.
- **IPX6 Water Resistance:** Protects against sweat and splashes, ideal for workouts.
- **Smart Touch Control:** Intuitive controls for calls, music, and voice assistant.

SOFT COMFORT & SNUG FIT



Ergonomic
earhook



Skin-friendly
material



Feelless
light

Image: A woman wearing the headphones, illustrating the soft comfort and snug fit provided by the ergonomic earhook and skin-friendly material.



SITUATIONAL AWARENESS

Keep you connected to the world around you while still enjoying your music

Image: A man running outdoors while wearing the headphones, emphasizing the ability to maintain situational awareness.

13.2 MM DYNAMIC DRIVER



Panoramic
sound effect



Acoustic
structural cavity

Equipped with upgraded Aluminized LCD dome speakers
for a more immersive music experience.

Image: A detailed diagram illustrating the 13.2mm dynamic driver, highlighting its panoramic sound effect and acoustic structural cavity for immersive audio.

PRECISION DIRECTIONAL AUDIO

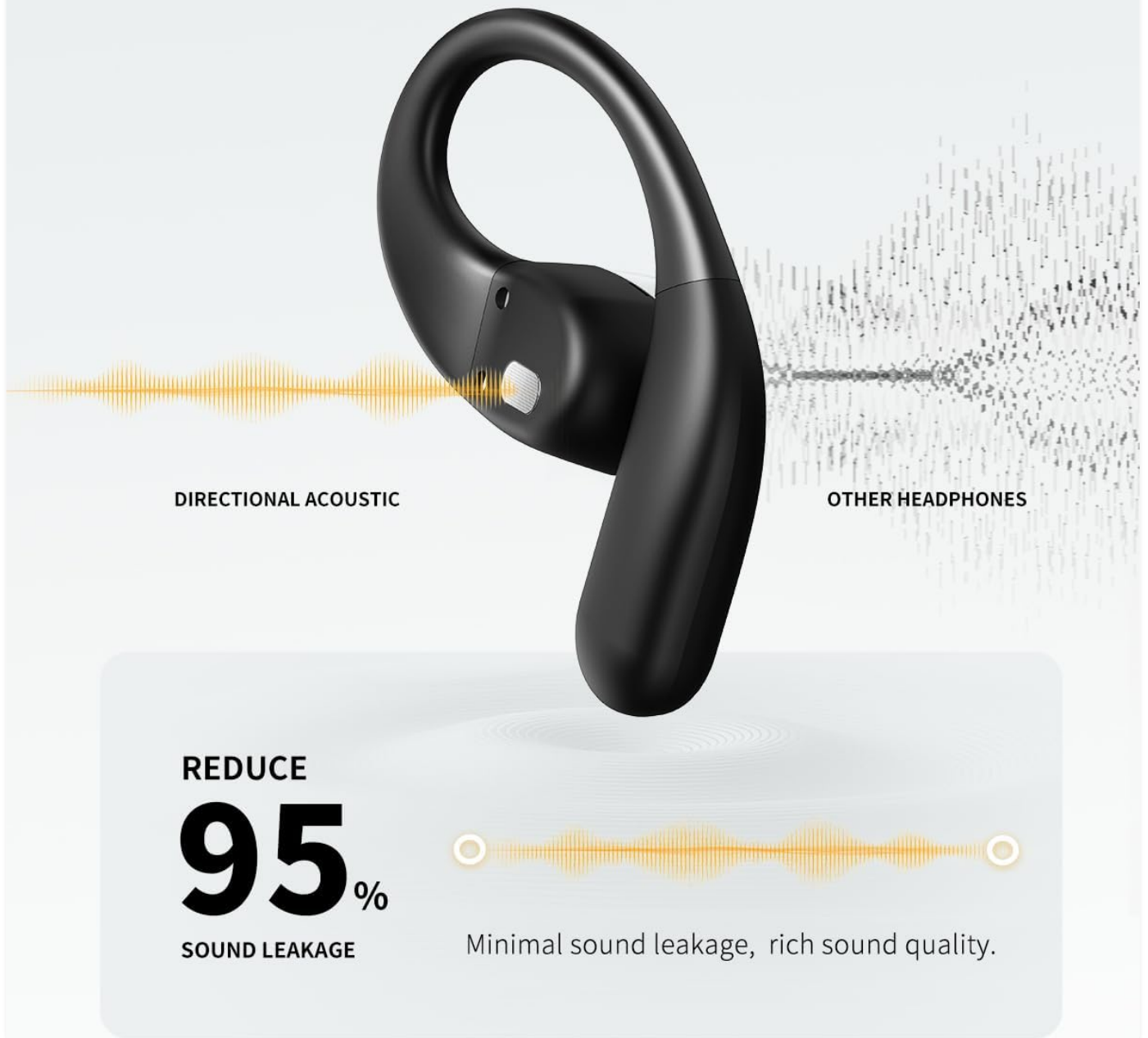


Image: A graphic demonstrating the precision directional audio technology, showing how it reduces sound leakage by 95% compared to other headphones.

ALL-DAY BATTERY LIFE

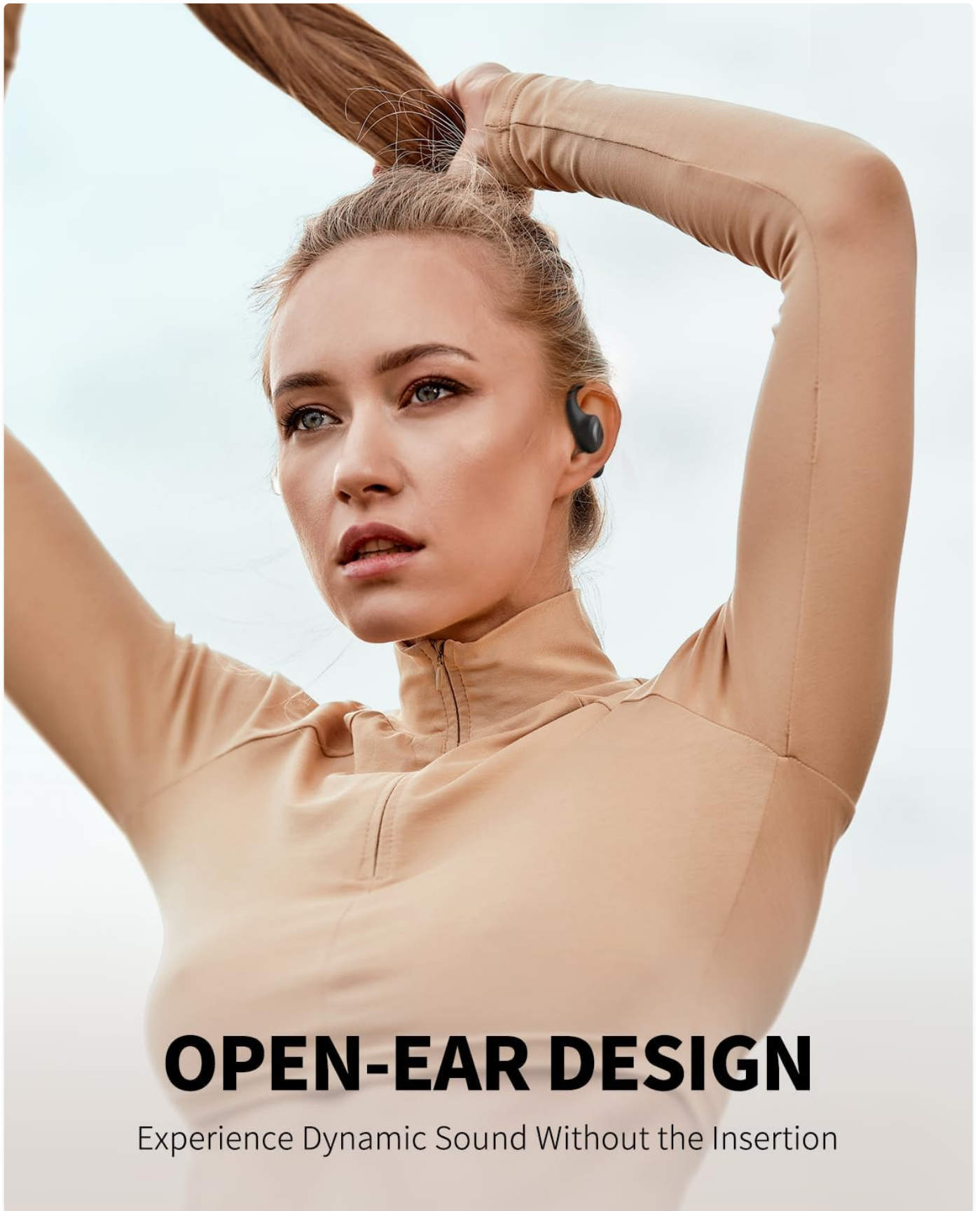
10^H
Single Charge

40^H
With Charge Case

DIGITAL POWER DISPLAY

Enjoy a seamless listening experience with endless hours of audio.

Image: A visual showing the all-day battery life, with 10 hours on a single charge and 40 hours with the charging case, featuring a digital power display.



OPEN-EAR DESIGN

Experience Dynamic Sound Without the Insertion

Image: A woman demonstrating the open-ear design, highlighting how it provides dynamic sound without insertion into the ear canal.

SETUP

1. Charging the Headphones

Before first use, ensure your headphones and charging case are fully charged. Connect the provided USB-C charging cable to the charging case and a compatible USB power source. The LED digital display on the charging case will indicate the battery level. A

full charge takes approximately 2 hours.

2. Powering On and Pairing

The headphones are designed for automatic pairing. Simply pick up both wireless bone conduction earbuds from the charging case, and they will automatically power on and enter pairing mode. On your device (smartphone, tablet, laptop), enable Bluetooth and select "PSIER SP06" from the list of available devices to connect.

3. Wearing the Headphones

For optimal comfort and sound quality, follow these steps to properly wear your PSIER Open Ear Headphones:

- 1. **Step 1:** Hang the end of the earbud on the ear helix.
- 2. **Step 2:** Rotate it backward along the auricle.
- 3. **Step 3:** Adjust the ear hook until the headset is worn stably and comfortably.

Open Ear Earbuds x1
User manual x1
USB-C Charging Cable x1
LED Digital Display Charging Case x1



Image: A three-step visual guide demonstrating the correct way to position and adjust the open-ear headphones for a secure and comfortable fit.

OPERATING INSTRUCTIONS

Your PSIER Open Ear Headphones feature intuitive touch controls on each earbud for managing calls, music playback, and voice assistant functions.

Touch Controls

Function	Action
Answer a Call	Short press the touch button once
End a Call	Long press the touch button for 2 seconds
Reject Call	Long press either earbud button for 2 seconds
Voice Assistant	Triple click either earbud button
Volume Up	Click right earbud button once
Volume Down	Click left earbud button once
Previous Song	Long press left earbud button

Function	Action
Next Song	Long press right earbud button
Play/Pause	Double click either earbud button

Smart Touch Control

Answer and hang up calls, play and pause tracks, and adjust voice volume, all with only one tap.



Image: A visual guide detailing the various touch control gestures for managing calls, music, and voice assistant functions on the headphones.

Usage Scenarios

The open-ear design and IPX6 water resistance make these headphones versatile for various activities:

- **Cycling:** Maintain awareness of traffic and surroundings.
- **Driving:** Stay connected while being aware of road sounds.
- **Working:** Listen to music or calls without being completely isolated.
- **Running/Workouts:** Enjoy music during intense activities without worrying about sweat.

Stable connection

Bluetooth 5.3 technology provides the headset with ultra-low latency and an ultra-long connection range of 33 ft.

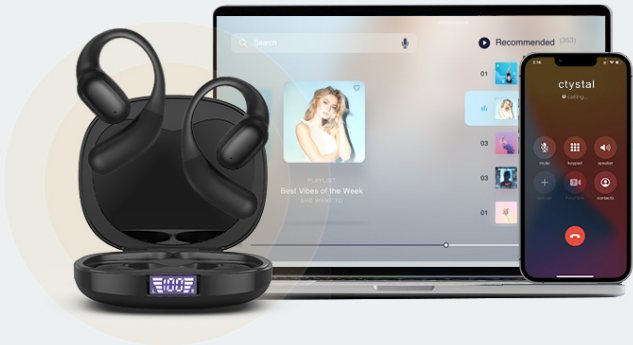


Image: Collage showing the headphones being used during cycling, driving, working, and running, illustrating their versatility.

MAINTENANCE

Proper care and maintenance will extend the lifespan of your PSIER Open Ear Headphones.

- **Cleaning:** Gently wipe the earbuds and charging case with a soft, dry, lint-free cloth. For stubborn dirt, a slightly damp cloth can be used, but ensure no moisture enters any openings. Do not use harsh chemicals or abrasive materials.
- **Storage:** When not in use, store the headphones in their charging case to protect them from dust, dirt, and physical damage. Store in a cool, dry place away from direct sunlight and extreme temperatures.
- **Water Exposure:** While IPX6 water-resistant, avoid submerging the headphones in water. Dry them thoroughly if they get wet from sweat or splashes before placing them back in the charging case.
- **Charging:** Use only the provided USB-C cable or a certified equivalent for charging. Avoid overcharging by disconnecting once fully charged.

TROUBLESHOOTING

If you encounter issues with your headphones, refer to the following common problems and solutions:

Problem	Possible Solution
Headphones not powering on	Ensure the charging case and earbuds are charged. Place earbuds in the case, close, then reopen to activate.
Cannot pair with device	<ul style="list-style-type: none">◦ Ensure Bluetooth is enabled on your device.◦ Make sure the headphones are in pairing mode (take them out of the case).◦ Forget "PSIER SP06" from your device's Bluetooth list and try pairing again.◦ Move closer to your device (within 33 feet).
No sound or low volume	<ul style="list-style-type: none">◦ Increase volume on both the headphones and your connected device.◦ Ensure headphones are properly connected to your device.◦ Check if the headphones are charged.
Sound cutting in/out or unstable connection	<ul style="list-style-type: none">◦ Move closer to your device and away from sources of interference (e.g., Wi-Fi routers, other Bluetooth devices).◦ Ensure there are no physical obstructions between the headphones and your device.◦ Restart both the headphones (by placing them in the case and taking them out) and your device.
Touch controls not responding	<ul style="list-style-type: none">◦ Ensure your fingers are clean and dry.◦ Try restarting the headphones.

SPECIFICATIONS

Detailed technical specifications for the PSIER Open Ear Headphones (Model SP06):

Feature	Detail
Model Name	SP06
Brand	PSIER

Feature	Detail
Ear Placement	Open Ear
Connectivity Technology	Wireless (Bluetooth)
Bluetooth Version	5.3
Bluetooth Range	33 Feet
Audio Driver Type	Bone Conduction Driver
Audio Driver Size	13.2 Millimeters
Frequency Response	20 Hz
Sensitivity	98 dB
Impedance	32 Ohm
Control Type	Touch Control
Playtime (Earbuds)	Up to 10 Hours
Playtime (with Charging Case)	Up to 40 Hours
Charging Time	2 Hours
Water Resistance Level	IPX6 (Water Resistant)
Item Weight	1.2 Ounces
Material	Plastic, Silicone
Compatible Devices	Laptops, Smartphones, Tablets
Included Components	User Manual, USB-C Charging Cable

WARRANTY AND SUPPORT

Warranty Information







PSIER Open Ear Headphones (Model SP06) come with a **12-month warranty** from the date of purchase. This warranty covers manufacturing defects and issues arising from normal use. Please retain your proof of purchase for warranty claims.

Customer Support

For any questions, technical assistance, or warranty claims, please contact PSIER customer support. Refer to the contact information provided on the product packaging or the official PSIER website for the most up-to-date support channels. You can also visit the [PSIER Store on Amazon](#) for additional product information and support resources.



Related Documents - SP06

	<p>PSIER SP05 Open Ear Wireless Headphones User Manual</p> <p>User manual for the PSIER SP05 Open Ear Wireless Headphones, detailing product contents, specifications, pairing, controls, charging, warranty, and safety information.</p>
	<p>PSIER SP05 Open Ear Headphones User Manual - Pairing, Controls, and Safety</p> <p>Comprehensive user manual for PSIER SP05 Open Ear Headphones. Learn about pairing, TWS connection, touch controls, charging, warranty, and safety guidelines for your wireless Bluetooth earbuds.</p>
	<p>CT12 Wireless Earbuds User Manual</p> <p>User manual for the PSIER CT12 wireless open-ear headphones. This guide details product contents, specifications, power on/off, Bluetooth pairing, earbud reset, wear instructions, MFB button controls, charging procedures, FCC certification, and essential safety guidelines.</p>
	<p>PSIER S12 Wireless Earbuds User Manual: Features, Pairing, Charging, and Safety</p> <p>Comprehensive user guide for the PSIER S12 wireless earbuds. Covers product contents, specifications, power on/off, Bluetooth pairing, resetting, charging, wearing, controls, extended warranty, technical support, FCC certification, and safety precautions.</p>
	<p>X12 Wireless Earbuds User Manual - Psier</p> <p>Comprehensive user manual for Psier X12 wireless earbuds. Learn about package contents, specifications, pairing, controls, charging, safety guidelines, and FCC compliance.</p>
	<p>SP06 Open Ear Headphones User Manual</p> <p>Comprehensive user manual for the SP06 Open Ear Headphones by Guangdong Xizhongxi, detailing setup, operation, controls, charging, safety guidelines, and FCC compliance information.</p>