

Manuals+

[Q & A](#) | [Deep Search](#) | [Upload](#)

manuals.plus /

> [LcFun](#) /

> [LcFun 2 Pack Torch Lighters Instruction Manual](#)

LcFun B0DF78W18Y

LcFun 2 Pack Torch Lighters Instruction Manual

Model: B0DF78W18Y

1. INTRODUCTION

The LcFun Torch Lighters are designed for versatile use, featuring a refillable butane tank, a visible fuel window, and an adjustable, windproof jet flame. This manual provides essential information for safe and effective operation, maintenance, and troubleshooting.

2. SAFETY INFORMATION

- **Butane Not Included:** All lighters are shipped without butane. Please fill with fuel before using.
- **Proper Filling:** For safety and to prevent butane splatter, the tank should only be filled to approximately 85% capacity. Avoid overfilling.
- **Keep Away from Children:** This product is not a toy. Store out of reach of children.
- **Avoid Extreme Temperatures:** Do not expose to temperatures above 122°F (50°C) or to prolonged sunlight.
- **Use in Well-Ventilated Area:** Ensure adequate ventilation when refilling or operating the lighter.
- **Do Not Puncture or Incinerate:** Never puncture or throw into fire.
- **Keep Away from Face and Clothing:** Always direct the flame away from your face, clothing, and flammable materials.
- **Use Only Butane Fuel:** Use only high-quality butane fuel for refilling.

3. PRODUCT FEATURES

Excellent Design

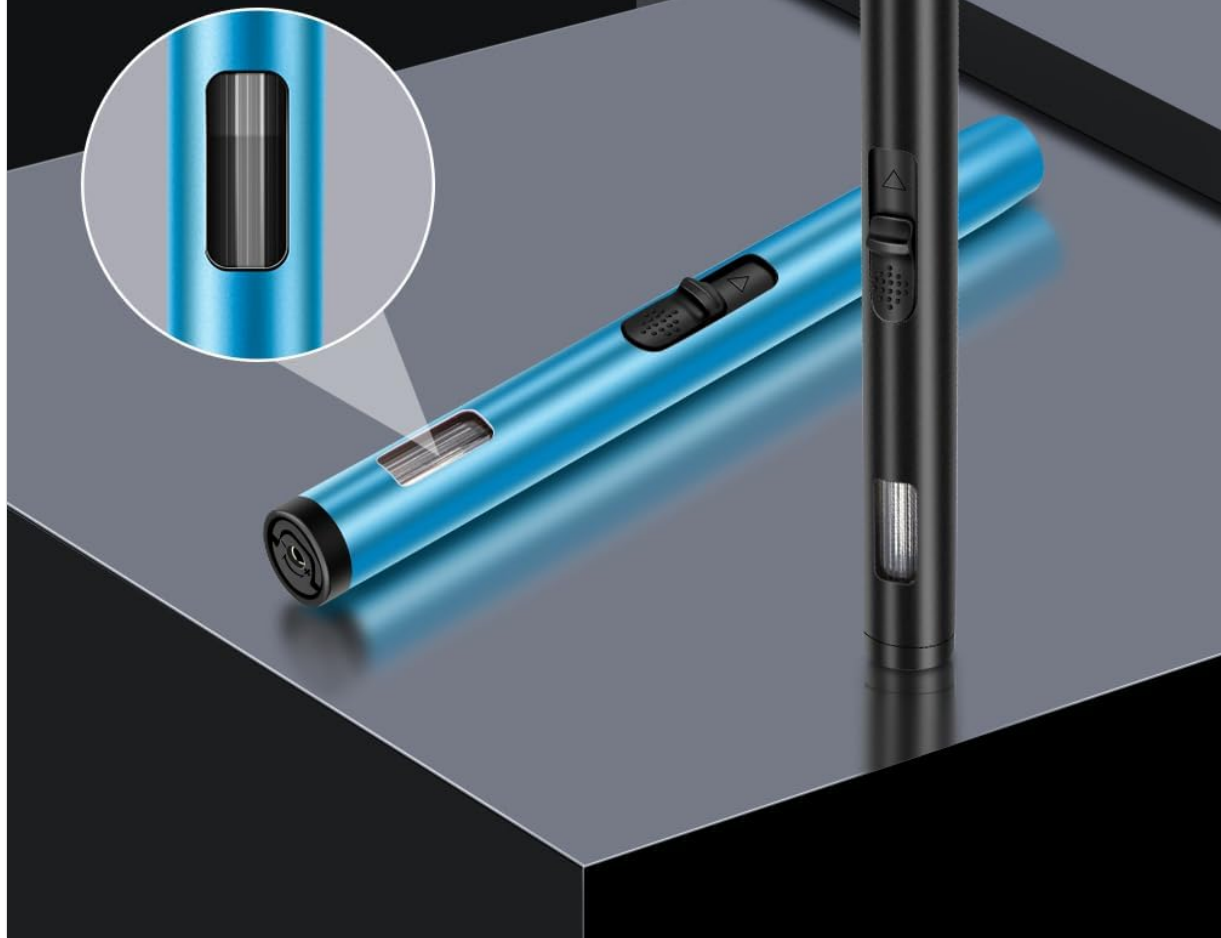
All lighters are shipped **WITHOUT BUTANE**,
please refill butane before use



Detailed Design: This image highlights the key components of the LcFun Torch Lighter, including the jet burner, ignition button, visible gas window, flame adjuster, and gas refill valve.

LCFUN

Visible Fuel Window



Visible Fuel Window: Easily monitor the butane level through the transparent window, ensuring you know when to refill.

Windproof Butane Torch Lighter



Windproof Jet Flame: The lighter features a powerful, continuous jet flame designed to resist wind, making it suitable for outdoor and camping activities.

Multipurpose Lighter



Candle



Cas



BBQ



Fireplace

Multipurpose Use: Ideal for lighting candles, gas stoves, BBQs, fireplaces, and for camping or fireworks.

4. SETUP AND FIRST USE

4.1 Butane Refilling

1. Ensure the lighter is completely empty of any residual fuel by pressing the refill valve with a small tool (e.g., a screwdriver).
2. Turn the flame adjuster to the lowest setting (towards the '-' sign).
3. Hold the lighter upside down. Firmly insert the nozzle of a high-quality butane fuel can into the filling valve at the bottom of the lighter.
4. Press down for 3-5 seconds. Repeat 2-3 times until the fuel window indicates approximately 85% full.
5. Allow the lighter to rest for about 4 minutes after refilling to allow the fuel to reach room temperature.



Refilling Process: Insert the butane can nozzle vertically into the lighter's refill valve and press firmly.

Your browser does not support the video tag.

Video: Butane Lighter Refilling and Usage Demonstration. This video demonstrates the correct procedure for refilling the LcFun torch lighter with butane fuel and shows its operation for various tasks like lighting grills and candles.

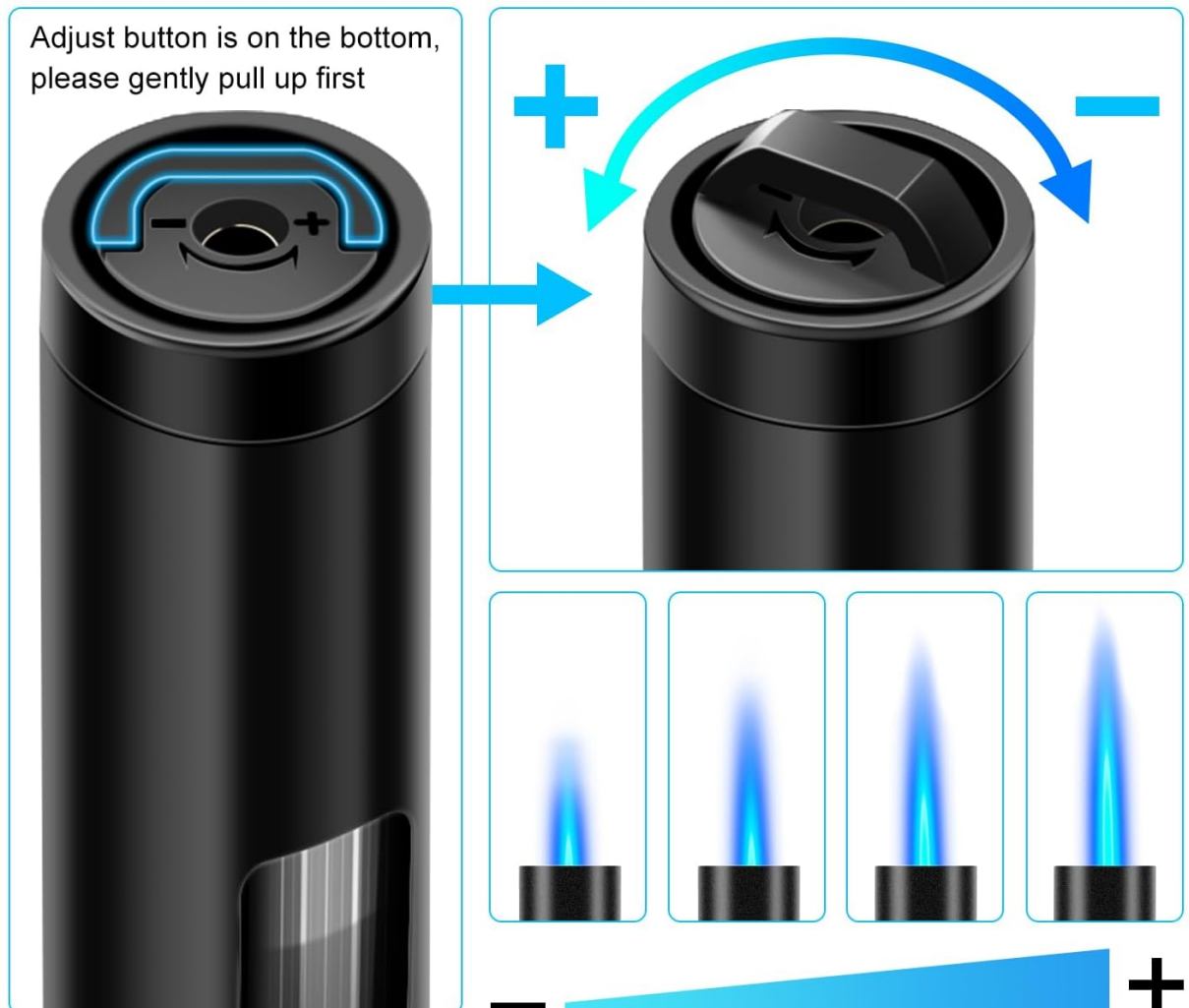
4.2 Flame Adjustment

The flame height can be adjusted using the adjuster at the bottom of the lighter. Gently pull up the recessed semi-circular handle and turn it towards '+' for a higher flame or towards '-' for a lower flame. The recommended flame height is 0.8-1.0 inch.

ADJUSTABLE FLAME FOR TOTAL CONTROL

All lighters are shipped WITHOUT butane

Adjust button is on the bottom, please gently pull up first



Adjustable Flame Control: The diagram illustrates how to adjust the flame intensity by rotating the valve at the base of the lighter.

5. OPERATING INSTRUCTIONS

5.1 Igniting the Lighter

Once filled and adjusted, slide the ignition button forward to ignite the jet flame. The flame will appear instantly.

5.2 Turning Off the Lighter

Release the ignition button to extinguish the flame. The flame will cease immediately once the button is released.

6. MAINTENANCE

6.1 General Care

- Keep the lighter clean and free from debris.
- Store in a cool, dry place, away from direct sunlight and heat sources.

6.2 Refilling Best Practices

- Always use high-quality butane fuel to ensure optimal performance and longevity of the lighter.
- Do not attempt to disassemble the lighter for maintenance beyond refilling and flame adjustment.

7. TROUBLESHOOTING

7.1 Lighter Does Not Ignite

- **Check Butane Level:** Look at the visible fuel window. If empty, refill the lighter.
- **Adjust Flame Height:** Ensure the flame adjuster is not set too low. Increase it slightly.
- **Bleed Air:** If the lighter has been refilled but still won't light, there might be air trapped in the tank. Press the refill valve with a small tool to release air, then try refilling again.

7.2 Flame is Weak or Inconsistent

- **Low Butane:** Refill the lighter if the fuel level is low.
- **Flame Adjustment:** Increase the flame height using the adjuster.
- **Impurity in Fuel:** Use only high-quality butane fuel. Low-quality fuel can cause blockages or inconsistent flames.

8. SPECIFICATIONS

Feature	Detail
Brand	LcFun
Material	Metal
Item Weight	4.6 ounces (0.13 Kilograms)

Fuel Type	Liquefied Petroleum Gas (Butane)
Product Dimensions	6.53"L x 0.63"W x 0.63"Th
Number of Items	2

9. WARRANTY AND SUPPORT

Your LcFun Torch Lighters come with a 120-day warranty. If you encounter any issues or require assistance, please do not hesitate to contact us. We are committed to ensuring your satisfaction and are always here to help.