

[Manuals.plus](#) /

> [lingsee](#) /

> LINGSEE 4K WiFi HDMI Wireless Display Dongle Adapter User Manual

lingsee 4K WiFi HDMI Wireless Display DLNA Dongle Adapter

LINGSEE 4K WiFi HDMI Wireless Display Dongle Adapter User Manual

Model: 4K WiFi HDMI Wireless Display DLNA Dongle Adapter

INTRODUCTION

The LINGSEE 4K WiFi HDMI Wireless Display Dongle Adapter is designed to cast content wirelessly from your smartphones, tablet PCs, or notebooks to larger display devices such as HDTVs, monitors, and projectors. It supports various wireless display protocols including Miracast, DLNA, and AirPlay, enabling seamless streaming of videos, audio, photos, office files, and web content. This device offers a convenient solution for both entertainment and professional presentations, providing a high-quality 1080P video output and excellent sound effects.



Figure 1: The LINGSEE 4K WiFi HDMI Wireless Display Dongle Adapter, showing the main dongle unit and its accompanying USB power cable with WiFi antenna.

SPECIFICATIONS

Feature	Description
Color	Black
Material	ABS + PC

HDMI Output	HDMI 1.2, supports 1080P video output and High-quality Sound Effect output. Supports 4K resolution.
WiFi Module	Built-in 8188ETV, supports 2.4GHz WiFi.
Wireless Display	Supports Online & Local content wireless display: Video / Audio / Photo / Office file / Website.
Supported Video Formats	AVI, DIVX, MKV, TS, DAT, MPG, MPRG, MOV, MP4, RM, RMVB, WMV
Supported Audio Formats	MP1, MP2, MP3, WMA, OGG, ADPCM-WAV, PCM-WAV, AAC
Supported Photo Formats	JPEG, BMP
Memory Storage Capacity	128 MB
Supported Internet Services	Netflix, Hulu, YouTube, Browser

SETUP GUIDE

Follow these steps to set up your LINGSEE Wireless Display Dongle Adapter:

1. **Connect to Display:** Insert the HDMI connector of the dongle into an available HDMI port on your TV, monitor, or projector.
2. **Provide Power:** Connect the USB power cable to the dongle's micro USB port. Then, plug the USB-A end of the cable into a USB port on your TV (if available and provides sufficient power) or into a standard USB power adapter (5V/1A recommended) plugged into a wall outlet.



Figure 2: Power and HDMI connection diagram. Ensure the dongle is properly powered for stable operation.

3. **Select Input:** Turn on your display device and use its remote control to select the correct HDMI input source that the dongle is connected to. You should see the dongle's startup screen on your display.
4. **Connect Mobile Device:** On your smartphone, tablet, or laptop, go to your Wi-Fi settings. Find and connect to the Wi-Fi network broadcast by the dongle (usually named "AnyCast-XXXX" or similar, with a password displayed on the screen).
5. **Configure for Mirroring:** Once connected to the dongle's Wi-Fi, open a web browser on your mobile device and navigate to the IP address displayed on the dongle's screen (e.g., 192.168.49.1). This will open the dongle's settings page. From here, you can configure the dongle to connect to your home Wi-Fi network (for internet access) and select the mirroring mode (Miracast, AirPlay, DLNA).

Simple operation plug and play

No need to download any related software, as long as you plug in the wireless device and power supply, mobile phone/tablet/notebook device to set accordingly, wireless WIFI connection, you can synchronize the display interface of mobile phone/tablet/notebook



Connection diagram

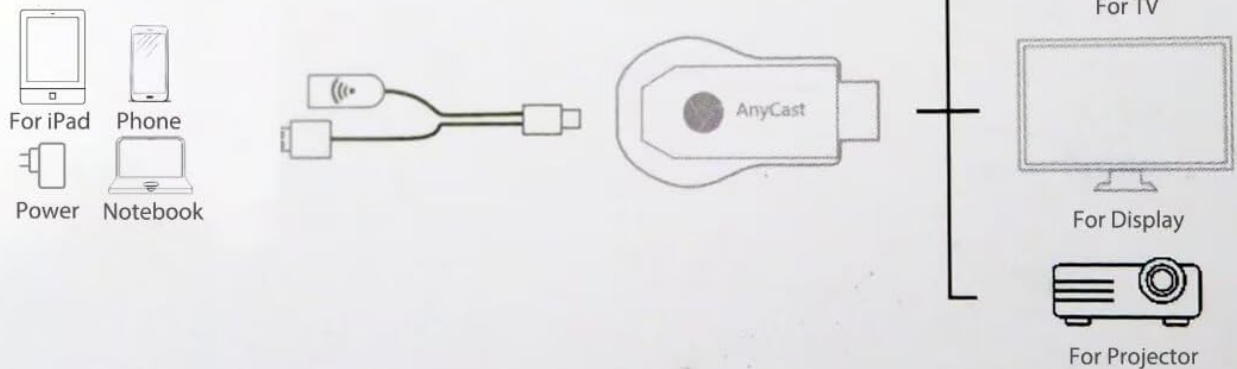


Figure 3: Connection diagram illustrating how the dongle facilitates wireless display from mobile devices to larger screens.

OPERATING INSTRUCTIONS

Once the dongle is set up, you can begin mirroring your device's screen or streaming content.

Screen Mirroring (Miracast/AirPlay)

For real-time screen mirroring, activate the screen mirroring feature on your mobile device. The exact name of this feature varies by device:

- **For Android devices:** Look for "Wireless Display," "Screen Mirroring," "Smart View," "Cast," or similar options in your device's settings or quick settings panel. Select the dongle from the list of available devices.
- **For iOS devices (AirPlay):** Swipe down from the top-right corner (or up from the bottom for older models) to open Control Center. Tap "Screen Mirroring" and select the dongle.
- **For Windows devices:** Press Windows key + P, then select "Connect to a wireless display" and choose the dongle.



Figure 4: The dongle enables easy screen mirroring, allowing users to enjoy media on a large screen in three simple steps: Insert, Connect, and Mirror.

DLNA Streaming

For streaming media files (videos, photos, music) from your device without mirroring the entire screen, use DLNA-compatible applications. Many media players and gallery apps on smartphones support DLNA. Look for a "Cast" or "Share" icon within the app when playing media, and select the dongle as the target device.

Perfectly to enjoy the ultimate big screen

Watch movies, play games, create your own exclusive cinema.
Allows you to enjoy the different audio-visual.



Figure 5: Enjoying a large screen experience by mirroring content from a smartphone to a TV using the wireless display dongle.

Connecting to Home Router (for Internet Access)

To allow the dongle and your mirrored device to access the internet simultaneously (e.g., for streaming online content), you need to connect the dongle to your home Wi-Fi router. This is done via the dongle's web-based settings page (accessed by connecting to the dongle's Wi-Fi and navigating to its IP address, as described in the Setup Guide).

- On the settings page, find the "Internet" or "Wi-Fi" option.
- Scan for available Wi-Fi networks and select your home router's SSID.
- Enter your home Wi-Fi password and confirm. The dongle will then connect to your home network.

Wireless display

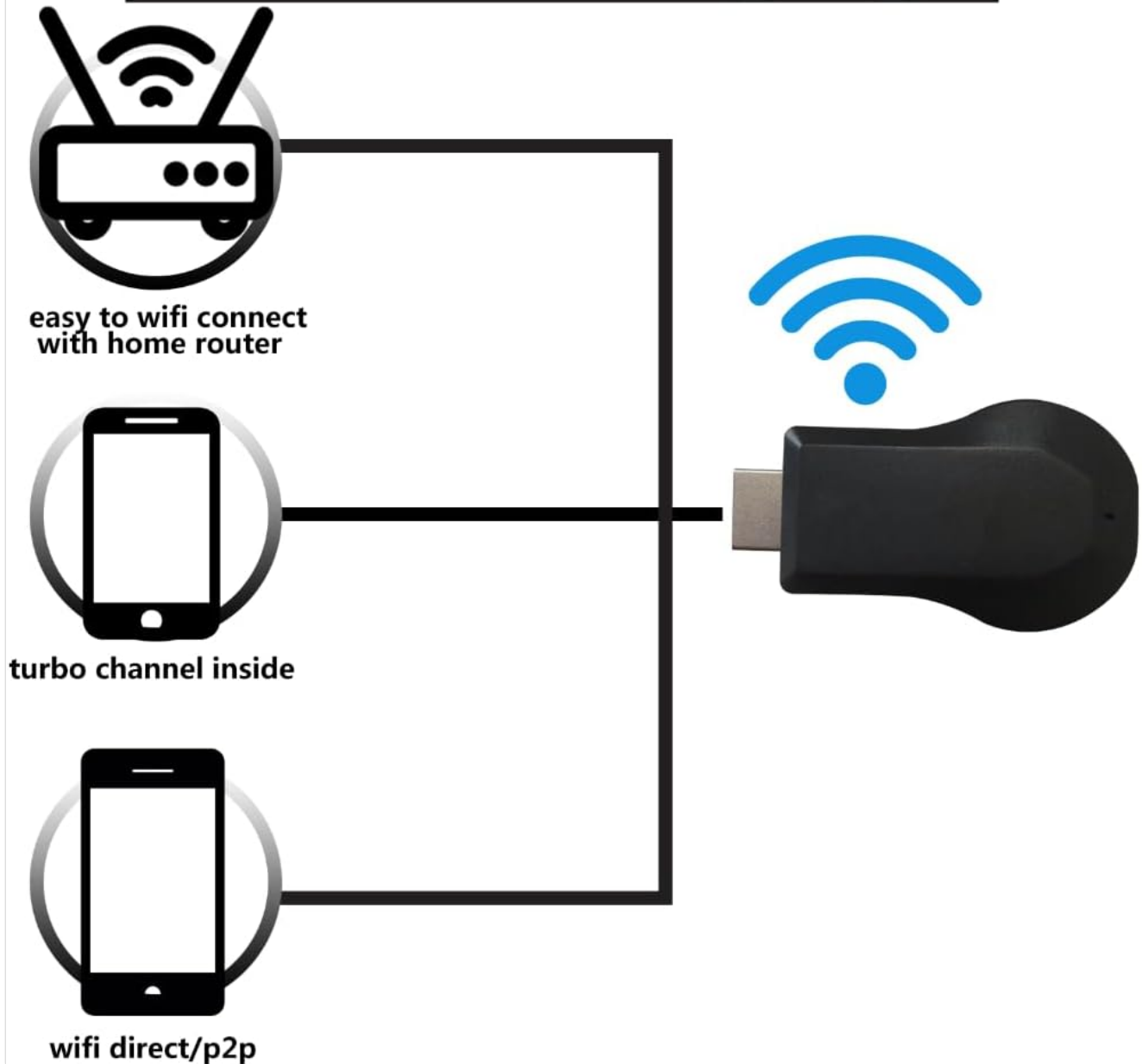


Figure 6: Diagram showing the process of connecting the dongle to a home router for internet access, enabling seamless online content streaming.

MAINTENANCE

To ensure the longevity and optimal performance of your LINGSEE Wireless Display Dongle Adapter, please follow these maintenance guidelines:

- **Cleaning:** Use a soft, dry, lint-free cloth to clean the surface of the dongle. Do not use liquid cleaners, aerosols, or abrasive solvents, as they may damage the device.
- **Storage:** When not in use, store the dongle in a cool, dry place, away from direct sunlight and extreme temperatures.
- **Handling:** Handle the dongle with care. Avoid dropping it or subjecting it to strong impacts, which can damage internal components.
- **Ventilation:** Ensure the dongle has adequate ventilation when in use. Do not cover it or place it in enclosed spaces that could lead to overheating.
- **Power Supply:** Always use a stable power supply (5V/1A) to prevent damage to the device.

TROUBLESHOOTING

If you encounter issues with your LINGSEE Wireless Display Dongle Adapter, refer to the following common problems and solutions:

Problem	Possible Cause	Solution
No display on TV/monitor.	<ul style="list-style-type: none">◦ Dongle not powered.◦ Incorrect HDMI input selected.◦ Loose HDMI connection.	<ul style="list-style-type: none">◦ Ensure USB power cable is securely connected and dongle is receiving power.◦ Verify the TV/monitor is set to the correct HDMI input channel.◦ Reseat the dongle firmly into the HDMI port.
Unstable or choppy mirroring.	<ul style="list-style-type: none">◦ Weak Wi-Fi signal.◦ Interference from other devices.◦ Distance between devices.	<ul style="list-style-type: none">◦ Ensure the dongle and your mobile device are within close proximity to each other and to the Wi-Fi router (if connected).◦ Minimize interference by moving away from other wireless devices.◦ Check for firmware updates for the dongle (via its web interface).
Cannot connect to dongle's Wi-Fi.	<ul style="list-style-type: none">◦ Incorrect Wi-Fi password.◦ Dongle not broadcasting Wi-Fi.	<ul style="list-style-type: none">◦ Double-check the Wi-Fi password displayed on the dongle's screen.◦ Restart the dongle by unplugging and re-plugging its power cable.
No audio during mirroring.	<ul style="list-style-type: none">◦ TV/monitor volume too low or muted.◦ Audio output settings on source device.	<ul style="list-style-type: none">◦ Increase the volume on your TV/monitor.◦ Check your mobile device's audio output settings to ensure sound is directed to the mirrored display.

WARRANTY AND SUPPORT

This product is designed for reliable performance. While specific warranty details are not provided, LINGSEE is committed to customer satisfaction.

If the product is defective or damaged upon arrival, or if you encounter any problems during use, please contact the seller immediately for assistance. They will provide support to resolve any issues you may experience.

For further assistance, please refer to the contact information provided by your retailer or on the product packaging.

SAFETY INFORMATION

Please read and follow these safety precautions to prevent damage to the device or injury to yourself:

- Do not expose the device to water, moisture, or extreme temperatures.
- Do not attempt to disassemble, repair, or modify the device yourself. This will void any potential warranty and may cause damage or injury.
- Keep the device away from heat sources such as radiators, heat registers, stoves, or other apparatus (including amplifiers) that produce heat.
- Use only the provided or recommended power supply.
- Avoid placing the device in direct sunlight for extended periods.
- Keep out of reach of children.

This manual is for informational purposes only.