

IOOI00 D210

IOOI00 D210 Portable Thermal Printer User Manual

Wireless Inkless Bluetooth Thermal Printer for Tattoo Stencil Transfer Paper, 8.5 x 11 Letter, A4 Rolled & Folded Thermal Paper

1. INTRODUCTION

The IOOI00 D210 is a portable, inkless thermal printer designed for convenience and versatility. It supports printing on A4-sized thermal paper and tattoo stencil transfer paper, accommodating both rolled and folded paper formats. This manual provides essential information for setting up, operating, maintaining, and troubleshooting your D210 printer.



Image 1.1: The IOOIOO D210 Portable Thermal Printer, a compact and wireless device.

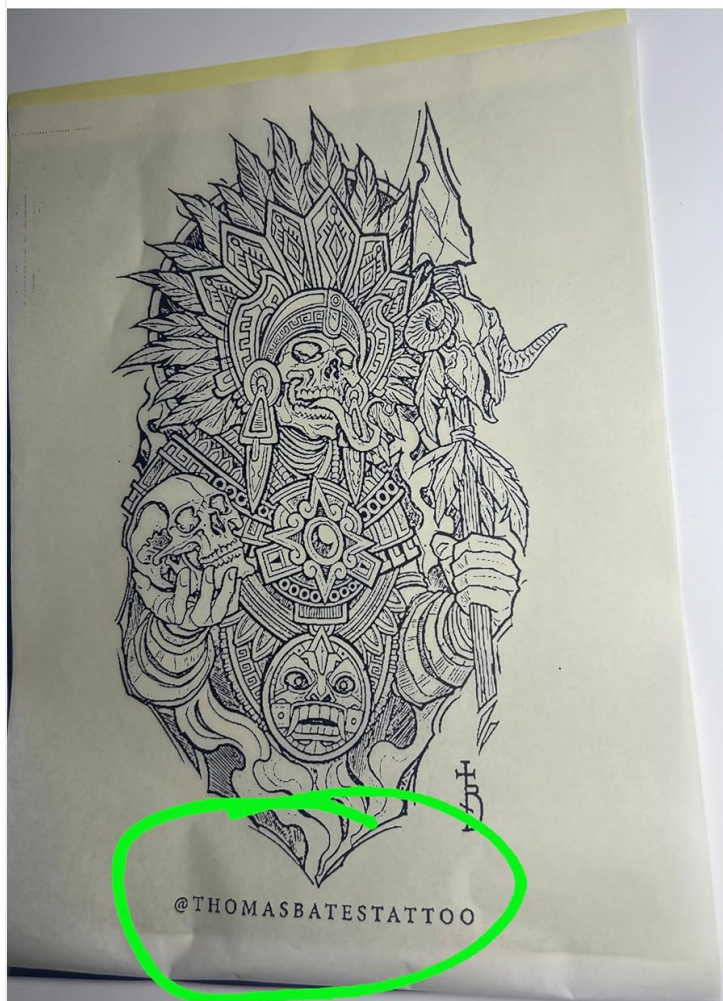
2. PACKAGE CONTENTS

Verify that all items are present in your package:

- IOOIOO D210 Portable Thermal Printer
- 5 x Tattoo Stencil Transfer Sheets
- 1 x Roll of A4 or Letter Thermal Paper
- 3 x Continuous Folded Pieces of Letter Thermal Paper
- 1 x USB Cable
- QR Code for Manual Download (digital manual)

Our IOOIOO®

D210 tattoo printer



Other printer

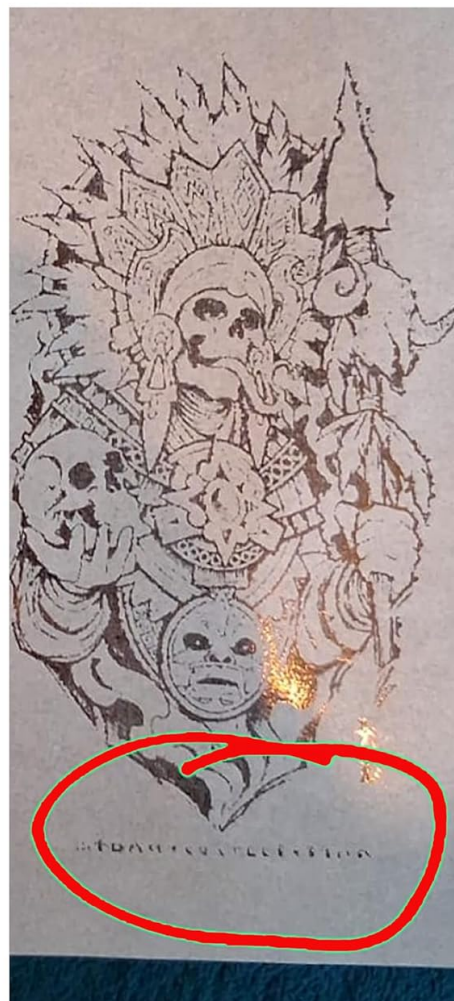


Image 2.1: Components included with the IOOIOO D210 printer, alongside a view of the mobile application interface and printed examples.

3. SETUP

3.1 Charging the Printer

Before first use, fully charge the printer using the provided USB cable. Connect the USB cable to the printer's charging port and a compatible USB power source (e.g., computer, wall adapter). The indicator light will show charging status.

3.2 Installing the App and Drivers

For mobile devices (Android/iPhone), scan the QR code provided in the package to download the official IOOIOO printing application. For Mac and Windows PCs, download the necessary drivers from the official IOOIOO website or follow instructions in the digital manual.

4. OPERATING INSTRUCTIONS

4.1 Loading Thermal Paper

The D210 printer supports both rolled and folded thermal paper (Letter/A4 size).

4.1.1 Loading Rolled Paper

1. Open the printer's paper cover.
2. Insert the thermal paper roll into the designated slot, ensuring the printable side faces the print head.
3. Pull a small length of paper out of the printer's exit slot.
4. Close the paper cover securely.



Image 4.1: The IOOIOO D210 printer prepared to print on 8.5x11 Letter/A4 thermal rolled paper.

4.1.2 Loading Folded Paper

1. Open the printer's paper cover.
2. Place the stack of folded thermal paper into the input tray, ensuring the printable side is correctly oriented.
3. Guide the first sheet into the printer's feed mechanism.
4. Close the paper cover securely.



Print 8.5x11" Letter/A4 thermal rolled paper also

Image 4.2: The IOOIIOO D210 printer demonstrating compatibility with continuous folded perforated letter-size paper.

4.2 Connecting to Devices

4.2.1 Bluetooth Connection (Mobile Devices)

1. Ensure the printer is powered on.
2. Enable Bluetooth on your mobile device (Android or iPhone).
3. Open the IOOIIOO printing application.
4. Within the app, search for and select your D210 printer from the list of available devices to pair.

4.2.2 USB Connection (PC)

1. Ensure the printer is powered on.
2. Connect the printer to your Mac or Windows PC using the provided USB cable.
3. Ensure the necessary drivers are installed on your computer.
4. The printer should be recognized as a printing device in your system settings.

4.3 Printing Process

Once connected and paper is loaded:

1. Open the document or image you wish to print in the IOOIOO app or your computer's printing interface.
2. Select the IOOIOO D210 printer.
3. Adjust print settings as needed (e.g., paper size, density). Note that the printer is optimized for black and white output and is not ideal for gradient designs or colors.
4. Initiate the print command.



Print continuous folded perforated letter size paper also

Image 4.3: Example of clear printing on tattoo stencil paper, showing sharp lines and solid black blocks. Not suitable for gradients.



**Even sharp lines and big black blocks are clear.
Note: not for gradient lines.**

Image 4.4: A visual comparison highlighting the print clarity of the IIOIOO D210 printer for tattoo stencils against another printer's output.

5. MAINTENANCE

5.1 Cleaning the Print Head

Periodically clean the print head to ensure optimal print quality. Use a soft, lint-free cloth lightly dampened with isopropyl alcohol. Gently wipe the print head surface. Ensure the printer is off and disconnected from power before cleaning.

5.2 Paper Handling

Store thermal paper in a cool, dry place away from direct sunlight to prevent degradation. Avoid touching the thermal paper's surface excessively, as oils from skin can affect print quality.

6. TROUBLESHOOTING

- **Printer Not Turning On:** Ensure the printer is fully charged. Connect it to a power source and allow it to charge for at least 30 minutes before attempting to power on again.
- **Poor Print Quality:**
 - Check if the thermal paper is loaded correctly with the printable side facing the print head.
 - Clean the print head as described in the Maintenance section.
 - Ensure the thermal paper is not old or damaged.
 - Adjust print density settings in the application or driver.
- **Connection Issues (Bluetooth):**
 - Ensure Bluetooth is enabled on your mobile device and the printer is within range.
 - Restart both the printer and your mobile device.
 - Forget the device in your Bluetooth settings and re-pair.
- **Connection Issues (USB):**
 - Verify the USB cable is securely connected to both the printer and the PC.
 - Ensure printer drivers are correctly installed. Try reinstalling them if issues persist.
 - Try a different USB port or cable.
- **Paper Jams:** Turn off the printer, carefully open the paper cover, and gently remove any jammed paper. Ensure paper is loaded correctly and not wrinkled.

7. SPECIFICATIONS

Product Dimensions	10.5"D x 3.1"W x 1.9"H
Item Weight	2.09 pounds (0.95 Kilograms)
Printing Technology	Thermal
Connectivity Technology	Bluetooth (for Phone), USB (for PC)
Maximum Media Size	Letter/A4
Print Media	Thermal Paper (plain), Tattoo Stencil Transfer Paper
Maximum Black and White Print Resolution	300 dpi
Max Print Speed (Monochrome)	4 ppm
Ink Type	Inkless (Thermal)
Compatible Devices	PC, Smartphones (Android, iPhone)
Battery	1 Lithium Ion battery (included)

8. WARRANTY AND SUPPORT



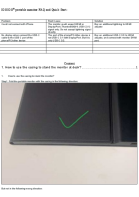

8.1 Limited Warranty

The IOOIOO D210 Portable Thermal Printer comes with a limited warranty. Please refer to the digital manual or contact customer service for specific warranty terms and conditions.

8.2 Customer Service

If you encounter any problems with the product or require assistance, please contact IOOIOO customer service via the local US phone number provided in your product documentation or on the official IOOIOO website. We are available to assist you with product inquiries, technical support, and warranty claims.

Related Documents - D210

	<p>iooioo D210 Portable Printer User Manual</p> <p>User manual for the iooioo D210 portable printer, covering setup, paper installation, Bluetooth and USB printing, troubleshooting, and FAQs. Supports tattoo stencils and various paper types.</p>
	<p>IOOIOO A80/A81 Portable Printer Manual</p> <p>User manual for the IOOIOO A80/A81 portable printer, covering product interface, phone and PC connectivity (Bluetooth and USB), paper installation, charging, cleaning the print head, and troubleshooting FAQs.</p>
	<p>IOOIOO Portable Monitor FAQ and Quick Start Guide</p> <p>Troubleshooting common connection issues and step-by-step instructions for setting up the IOOIOO portable monitor using its protective casing.</p>
	<p>Marklife D210 A4 Thermal Printer User Manual</p> <p>Comprehensive user manual for the Marklife D210 A4 Thermal Printer, detailing setup, paper loading, printing functions, and troubleshooting.</p>