

VGKE 16000LM_Android Projector

VGKE Mini Projector 16000LM Android Projector User Manual

Model: 16000LM_Android Projector

1. INTRODUCTION

This manual provides essential instructions for setting up, operating, and maintaining your VGKE Mini Projector. Please read it thoroughly before using the product to ensure optimal performance and longevity.



Figure 1: VGKE Mini Projector and its stand.

2. SETUP

2.1 Unboxing

Carefully unpack all components from the product box. Ensure all items listed in the package contents are present.

Your browser does not support the video tag.

Video 1: Unboxing the projector and its accessories.

2.2 Physical Setup and Power Connection

Place the projector on a stable, flat surface. The projector features a 90-degree adjustable and retractable stand for flexible positioning. Connect the power cord to the projector and then to a power outlet.



Figure 2: The VGKE Mini Projector demonstrating its 90-degree adjustable lens for flexible projection onto walls or ceilings.

Your browser does not support the video tag.

Video 2: Demonstrating power connection and initial startup of a smart Android projector.

2.3 Remote Control Pairing

To ensure full functionality, pair the remote control with your projector. Follow the on-screen instructions or refer to the video below.

Your browser does not support the video tag.

Video 3: Instructions on how to pair the Bluetooth remote control with the projector.

2.4 Network Configuration

Connect your projector to your Wi-Fi network and sign in to your Google account to access smart features and apps. Follow the on-screen prompts.

Your browser does not support the video tag.

Video 4: Guide on how to start and configure the projector, including Wi-Fi and Google account setup.

2.5 Connecting to iOS/Android Devices

The projector supports AirPlay/Miracast/Google Cast for screen mirroring. Ensure your device and projector are on the same Wi-Fi network.

- **For iOS Devices:** Select the 'E-Share' app on the home page, turn on 'AirPlay' in settings, and select the projector from your iOS device's screen mirroring options.
- **For Android Devices:** Select the 'E-Share' app on the home page, turn on 'Miracast' in settings, and select the projector from your Android device's wireless projection options.

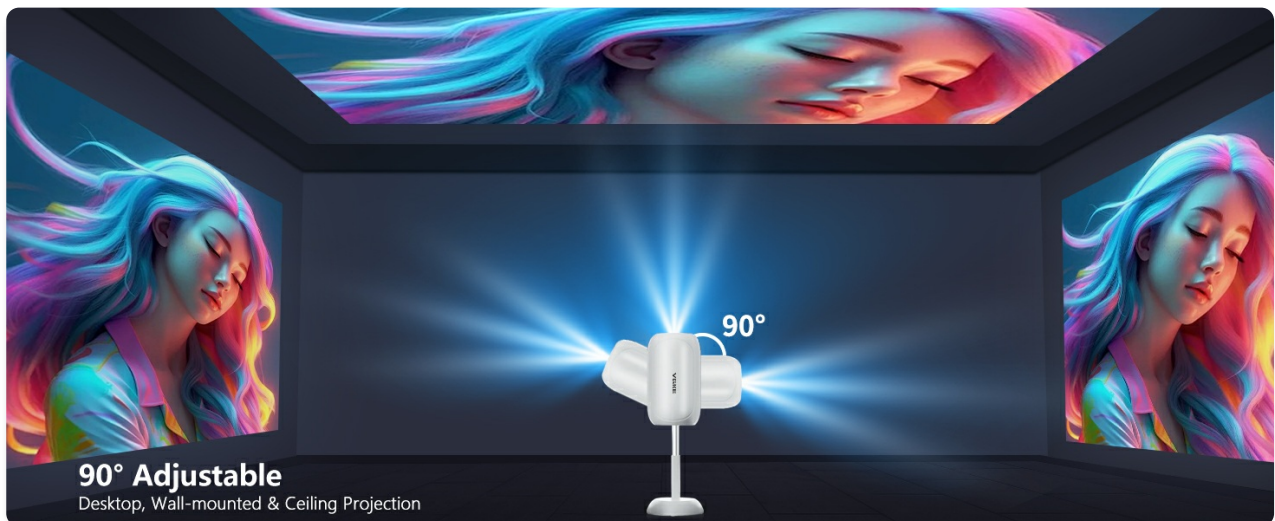


Figure 3: Instructions for connecting to an iOS device for screen mirroring.

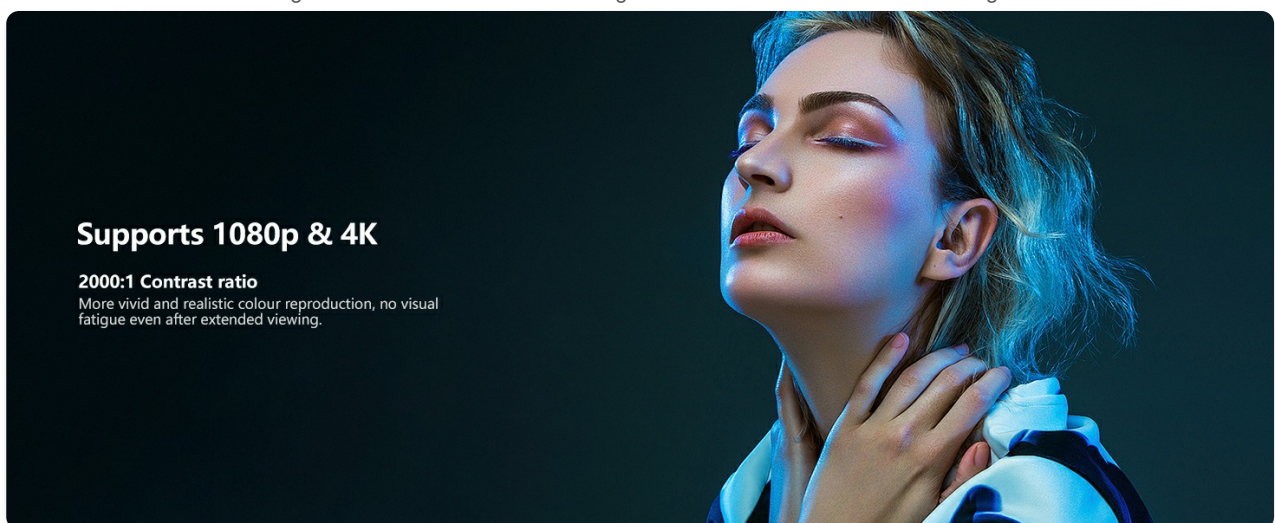


Figure 4: Instructions for connecting to an Android device for screen mirroring.

3. OPERATING INSTRUCTIONS

3.1 Projection Adjustment

The projector features 3D TOF autofocus and auto keystone correction for a clear image. You can also manually adjust the focus if needed.



Figure 5: Illustration of the projector's intelligent auto screen adjustment features, including 3D TOF sensor, autofocus, and auto keystone correction.

3.2 Using Built-in Apps

The projector runs on Android 13.0, allowing direct access to over 8,000 apps like Netflix, Prime Video, YouTube, and Disney+ without external devices.

Smart Projector Built-in APPS

8000+ apps, streaming everything on Android TV



Figure 6: The VGKE Mini Projector displaying its smart interface with pre-installed applications for direct streaming.

3.3 Screen Mirroring

Mirror content from your iOS or Android devices seamlessly using AirPlay, Miracast, or Google Cast. Ensure a stable WiFi 6 connection for optimal performance.

Ultra Fast WiFi 6 Connection

One-Click Streaming via Miracast/Airplay/Googlecast



Figure 7: The projector connected via Ultra Fast WiFi 6, demonstrating one-click streaming via Miracast, Airplay, and Googlecast.

3.4 Bluetooth Connectivity

Connect external Bluetooth 5.2 devices such as soundbars or headphones for an enhanced audio experience.



Figure 8: The VGKE Mini Projector utilizing two-way Bluetooth 5.2 for immersive stereo audio experience with external speakers.

3.5 External Device Connection

Utilize the HDMI, AV, and USB ports to connect various devices like smartphones, laptops, tablets, DVD players, and TV sticks/boxes.

Compatible with Multiple Devices

Smartphone/Tablets/Laptop/Headset/Sound Bar/PS5
Streaming devices



Figure 9: The projector's versatile connectivity options, including HDMI, USB, and Audio ports, compatible with smartphones, laptops, and gaming consoles.

4. MAINTENANCE

4.1 Cleaning the Projector Lens and Internal Dust

Regular cleaning ensures optimal image quality. Use a flat screwdriver or art knife to open the dust cover. Use a cotton swab from the cleaning kit to gently clean any black spots on the projector LCD screen. Remember to put the dust cover back on after cleaning.

Your browser does not support the video tag.

Video 5: Detailed instructions on how to clean the internal dust from the projector.

5. TROUBLESHOOTING

- **No Image:** Ensure the power cord is securely connected and the projector is turned on. Check the input source (HDMI, USB) is correctly selected.
- **Blurry Image:** Use the auto-focus feature or manually adjust the focus dial. Ensure the projection surface is flat and the projector is positioned correctly.
- **No Sound:** Check the volume settings on the projector and any connected external audio devices. Ensure Bluetooth audio is correctly paired or HDMI audio is selected.
- **Connectivity Issues (Wi-Fi/Bluetooth):** Ensure the projector is within range of the network/device. Re-enter Wi-Fi passwords or re-pair Bluetooth devices.
- **Remote Control Not Responding:** Check the batteries in the remote control. Re-pair the remote control if necessary.

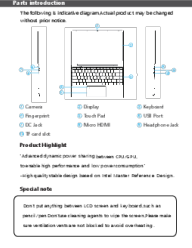

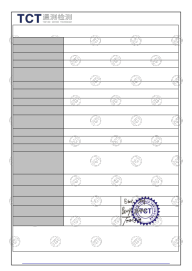

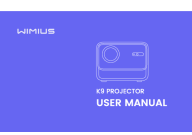

6. SPECIFICATIONS

Feature	Detail
Brand	VGKE
Model	16000LM_Android Projector
Product Dimensions	15.49 x 15.49 x 24.38 cm
Item Weight	1.36 kg
Form Factor	Portable
Screen Resolution	1280 x 720 (Native)
Display Resolution Maximum	3840 x 2160 Pixels (4K Support)
Operating System	Android 13.0
Special Features	3D TOF Autofocus, Auto Keystone, 90° Adjustable, Built-in Apps
Connectivity Technology	Bluetooth 5.2, HDMI, Wi-Fi 6 (2.4G/5G), AV, USB
Power Source	AC (230 Volts)
Included Components	Power Cord, Remote, User Manual

7. WARRANTY AND SUPPORT

VGKE is committed to providing reliable after-sales support. For any inquiries, technical assistance, or warranty claims, please contact VGKE customer service. Our team is always ready to provide you with consultation or assistance.

Please refer to your purchase documentation for specific warranty terms and contact details.

	<p>VGKE Laptop User Manual: Features, Safety, and Warranty Information</p> <p>Comprehensive user manual for the VGKE Laptop, covering parts introduction, LED indicators, important safety notices, warranty details, and FCC compliance. Learn about your VGKE laptop's features and proper usage.</p>
	<p>VGKE TS-6 Micro-Portable LED LCD Projector: Specifications and Features</p> <p>Discover the VGKE TS-6, a micro-portable LED LCD projector offering 780 ANSI lumens, 10,000:1 contrast, 1080p resolution, and a 25,000-hour LED lifespan. Features Airplay, Miracast, and Bluetooth connectivity for versatile media playback.</p>
	<p>VGKE Laptop FCC Test Report (FCC ID: 2AZ4C2021M)</p> <p>This test report from SHENZHEN TONGCE TESTING LAB details the compliance testing of a VGKE Laptop (Model B14, FCC ID: 2AZ4C2021M) against FCC Part 15 regulations and ANSI C63.10:2013 standards.</p>
	<p>WIMIUS P63 Projector User Manual</p> <p>User manual for the WIMIUS P63 Projector, covering setup, operation, specifications, troubleshooting, and warranty information.</p>
	<p>WIMIUS K9 Projector User Manual: Setup, Specifications, and Operation Guide</p> <p>Get the most out of your WIMIUS K9 Projector with this comprehensive user manual. Learn about installation, remote control, image settings, connectivity options, and troubleshooting for your home cinema experience.</p>
	<p>Agreago GC357 Auto Focus Video Projector User Manual</p> <p>Comprehensive user manual for the AGREAGO GC357 Auto Focus Video Projector, covering setup, features, connections, screen mirroring, Bluetooth, specifications, and troubleshooting.</p>