

## SOULION R80

# SOULION R80 Bluetooth Computer Speakers Instruction Manual

Model: R80

## INTRODUCTION

Thank you for choosing the SOULION R80 Bluetooth Computer Speakers. This manual provides essential information for the proper setup, operation, and maintenance of your device. Please read these instructions carefully before use to ensure optimal performance and longevity.



Image: The SOULION R80 Bluetooth Computer Speakers, featuring a central control panel with a digital clock display and a colorful LED light strip along the bottom edge.

## KEY FEATURES

- **LCD Clock Display:** Integrated digital clock for convenience (requires 2 AA batteries, not included).
- **Upgraded LED Light Effects:** Five dynamic lighting effects with a unique mirror inlay design.
- **Multiple Connectivity Modes:** Supports USB, Bluetooth, and AUX connections.
- **Powerful & Clear Sound:** Equipped with two independent diaphragms for rich audio.
- **Easy Controls:** Independent button operation and a rotary knob for volume adjustment.

## SETUP

---

### Package Contents

- SOULION R80 Speaker
- USB-C to USB Adapter
- User Manual

### Powering the Device

The speaker is powered via a USB connection. Connect the integrated USB cable to a USB port on your computer or a USB power adapter (not included).

### Clock Setup

1. Insert 2 AA batteries (not included) into the battery compartment located at the rear of the speaker.
2. Press the "H" button to select 12/24 hour format.
3. Press the "S" button to select hours.
4. Use the "▲" button to adjust the correct hour.
5. Press the "S" button again to select minutes.
6. Use the "▲" button to adjust the correct minutes.
7. Finally, press the "S" button again to confirm the time.

# How To Adjust Clock

Enjoy your happy time.

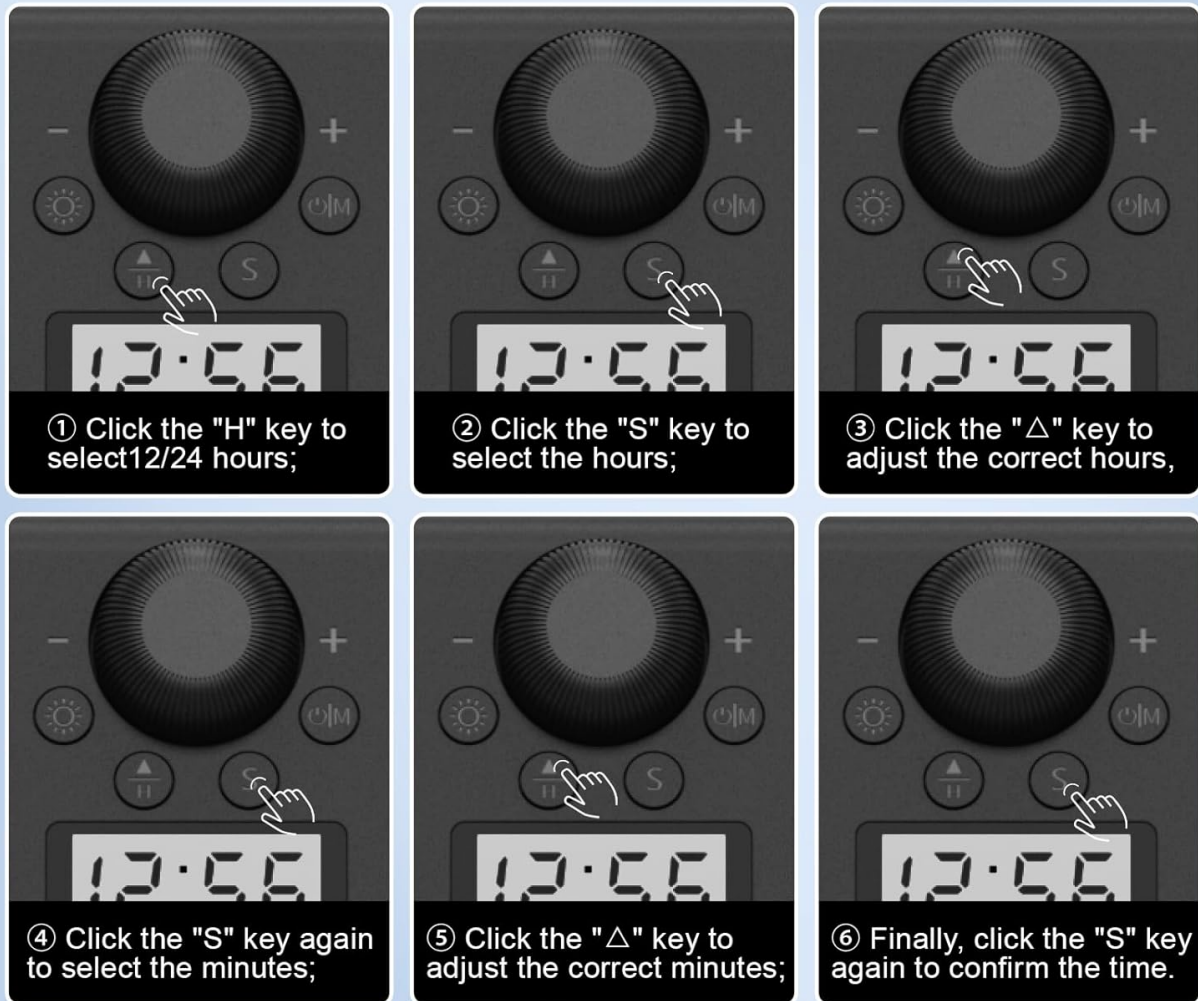


Image: Visual guide for setting the digital clock on the speaker, detailing button presses for hour and minute adjustments.



Image: Details on the clock's power requirements, showing the battery bay and emphasizing that 2 AA batteries are needed and not included. It also explains that the clock is powered by USB when connected, extending battery life.

## Connecting to Devices

The SOULION R80 offers multiple connectivity options:

- **USB Mode (for PC/Laptop):**

- a. Plug the USB connector into a USB port on your computer.
- b. For MacBooks with USB-C ports, use the included USB-C to USB adapter.
- c. On Windows, select "R80" as the audio output in your sound settings.
- d. On Mac, select "R80" as the sound output in System Preferences > Sound.

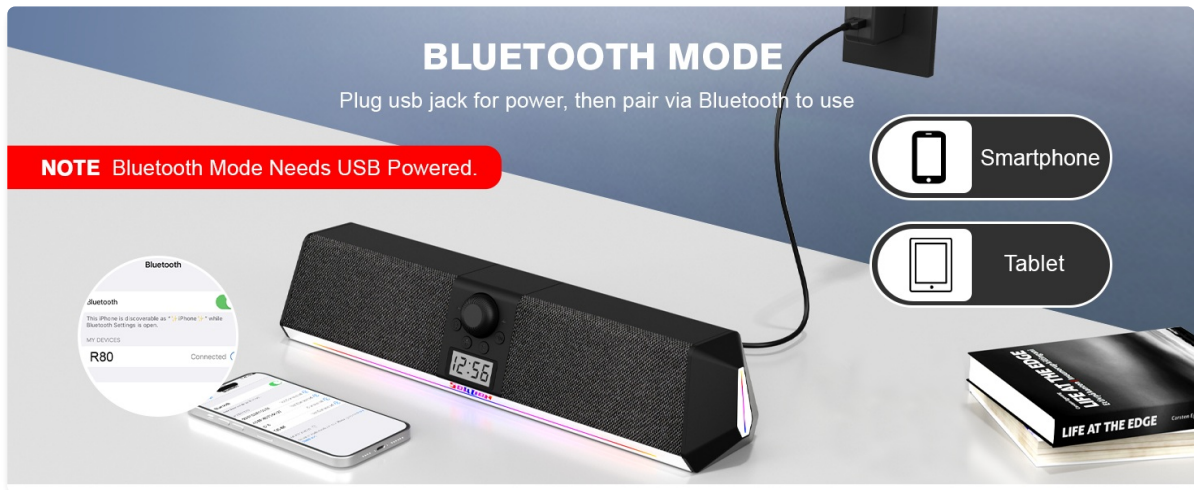


Image: A screenshot demonstrating how to select "R80" as the audio output device in Windows sound settings.



Image: A screenshot demonstrating how to select "R80" as the sound output device in Mac System Preferences.

- **Bluetooth Mode:**

- a. Ensure the speaker is powered via USB.
- b. Press the "M" button on the speaker to select "Bluetooth Mode".
- c. On your smartphone or tablet, search for "R80" in the Bluetooth settings and connect.
- d. To clear Bluetooth memory and reconnect, press and hold the light button for three seconds.



## Troubleshooting

Do not work/No sound

1. Be sure do not plug with two devices as the audio output on computer at the same time.
2. Be sure choose "R80" as audio output on your device.
3. Be sure computer & R80 speaker both volume up and try to be MAX.
4. Try to plug the USB or Type-C jack at the back of computer host port.
5. Try to connect with other devices works or not.
6. Try to change Bluetooth mode and check work or not.

Image: A visual guide illustrating how to connect the SOULION R80 speaker via Bluetooth, showing a smartphone pairing with "R80".

### • AUX Mode:

- a. Ensure the speaker is powered via USB.
- b. Connect a 3.5mm audio cable (not included) from your device to the AUX input port on the rear of the speaker.
- c. Press the "M" button on the speaker to select "AUX Mode".
- d. Note: Only supports 3.5mm 3-Pole audio cables. 4-Pole audio cables are not supported.



Image: A visual guide illustrating how to connect the SOULION R80 speaker via AUX mode, showing the 3.5mm audio jack connection and specifying supported cable types.

## OPERATING INSTRUCTIONS

### Controls Overview

# Easy Control & Connect



Turn On/Off Light  
Light Mode Switch



Power On/Off  
Mode Switch



Select Hours/Minutes



"▲" Adjust Time Digits  
(hours/minutes)  
"H" Select 12/24 Hours



**Clock**

**(Needs 2 AA batteries, not included)**

Image: A detailed view of the SOULION R80 speaker's control panel, highlighting the volume knob, mode switch, light control, and clock adjustment buttons.

- **Power On/Off:** Long press the "M" button for 3 seconds.
- **Volume Adjustment:** Rotate the central knob clockwise to increase volume, counter-clockwise to decrease.
- **Mode Switching:** Short press the "M" button to cycle between USB, Bluetooth, and AUX modes.
- **LED Light Control:** Short press the light button to switch between 5 different LED light modes. Long press to turn the lights off.
- **Clock Adjustment:** Use the "H" and "S" buttons to select and the "▲" button to adjust hours and minutes as described in the Setup section.



## LED Light Effects

The SOULION R80 features 5 distinct LED lighting effects:

- Rainbow
- Breathe
- Monochrome Fixed
- Rhythm
- Gradient



## Usage Scenarios





Image: Depicts the SOULION R80 speakers being used in various entertainment scenarios such as listening to music, watching movies, and playing games, showcasing its versatility.

## MAINTENANCE

---

### General Care

- Keep the speaker in a dry environment.
- Clean the surface with a soft, dry cloth. Avoid using harsh chemicals or abrasive materials.
- Do not expose the speaker to extreme temperatures or direct sunlight.

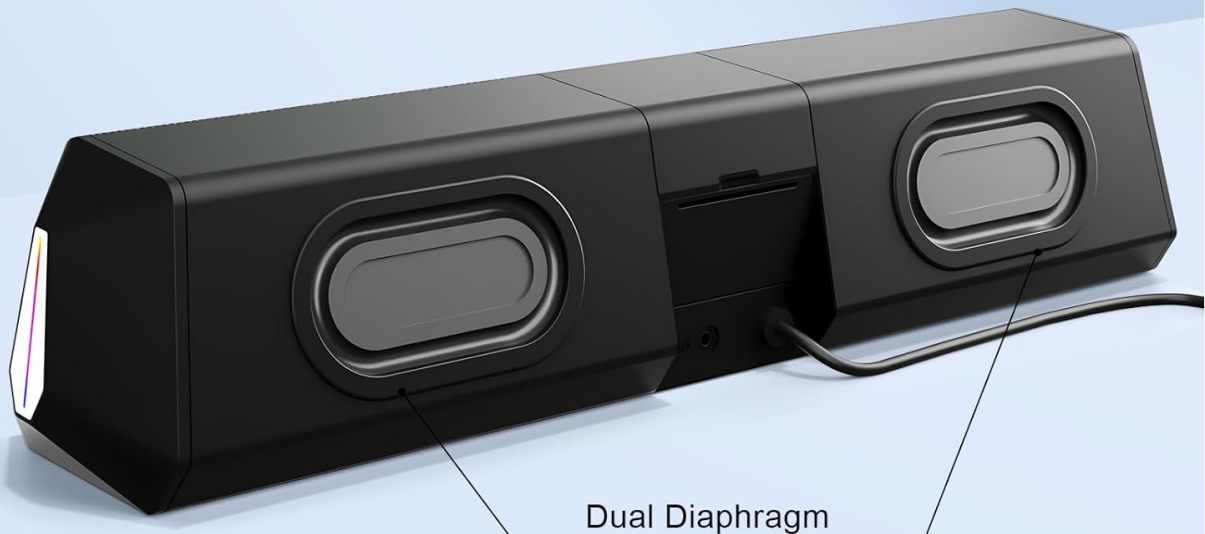
### Clock Battery Replacement

The digital clock requires 2 AA batteries. Replace them when the display becomes dim or stops working. Ensure correct polarity when inserting new batteries.



# Loud & Rich Sound

Enjoy your auditory feast.



**Battery Bay for Clock**



**2 AA batteries** **Not Included**



Image: The rear of the SOULION R80 speaker, illustrating the dual diaphragms and the battery compartment for the clock, emphasizing that AA batteries are not included.

## TROUBLESHOOTING

### No Sound or Device Not Working

- Ensure only one device is connected as the audio output on your computer at a time.
- Verify that "R80" is selected as the audio output on your device.
- Confirm that both the computer and the R80 speaker volumes are turned up, ideally to maximum for testing.
- Try plugging the USB or Type-C jack into a different port on your computer.
- Attempt to connect with other devices to check if the speaker functions.
- Switch between Bluetooth, USB, and AUX modes to see if the issue is mode-specific.



Image: A troubleshooting chart listing common issues like 'No sound' and providing steps to resolve them, such as checking audio output settings and trying different ports or modes.

### SPECIFICATIONS

Feature	Detail
Model Name	R80
Brand	SOULION
Speaker Type	Soundbar
Connectivity Technology	USB, Bluetooth
Wireless Communication Technology	Bluetooth
Special Feature	USB Port, Digital Clock Display, LED Dynamic Light
Power Source	DC (USB Powered)
Speaker Maximum Output Power	10 Watts
Frequency Response	150 Hz
Signal-to-Noise Ratio	60 dB
Product Dimensions	15"D x 3"W x 3"H
Item Weight	1.8 pounds (818 Grams)
Color	Black
Material	Composite
Control Method	Touch, Rotary Knob
Maximum Range (Bluetooth)	10 Meters
Manufacturer	Shenzhen Soulion Technology Co., LTD

### PRODUCT VIDEOS

## SOULION R80 USB Computer Speakers Overview

Your browser does not support the video tag.

Video: This official product video demonstrates the key features of the SOULION R80 speakers, including LED lighting, connectivity options (USB, Bluetooth, AUX), and control panel functions. It shows the speaker in various usage scenarios and highlights its design and sound capabilities.

## WARRANTY INFORMATION

The SOULION R80 Bluetooth Computer Speakers come with a **Limited Warranty**. For specific terms and conditions, please refer to the warranty card included with your product or contact SOULION customer support.

## CUSTOMER SUPPORT

If you encounter any issues or have questions regarding your SOULION R80 speakers, please contact our customer support team. Refer to the product packaging or the official SOULION website for the most up-to-date contact information.

For further assistance, please visit the [SOULION Store on Amazon](#).