



Manuals.plus /

› PHILIPS /

› Philips Series 9000 All-In-One Trimmer User Manual

PHILIPS MG9560/28

Philips Series 9000 All-In-One Trimmer User Manual

Model: MG9560/28

INTRODUCTION

This manual provides detailed instructions for the safe and effective use of your Philips Series 9000 All-In-One Trimmer. Designed for versatile grooming, this device allows you to style your beard, body, face, nose, and ear hair with precision. Please read this manual thoroughly before first use and retain it for future reference.

IMPORTANT SAFETY INFORMATION

Always follow basic safety precautions when using electrical appliances. This device is water-resistant and can be used in the shower, but ensure it is fully charged and the charging port is dry before connecting the USB cable. Do not disassemble the device. Keep out of reach of children. Only use attachments provided by Philips. If the device is damaged, do not use it.

PACKAGE CONTENTS



Image: The Philips Series 9000 All-In-One Trimmer with all its attachments, including various combs, a nose/ear trimmer, and different trimming heads.

Your Philips Series 9000 All-In-One Trimmer package includes the following items:

- 1 Premium Stainless Steel Multi Groomer (main unit)
- 1 Travel Pouch
- 5 Trimmer Attachments (various heads for different grooming needs)
- 12 Guards (various length combs)
- 1 Adjustable Precision Comb (for fine-tuning length settings)
- 1 Cleaning Brush
- 1 USB Power Cord (power adapter not included)

PRODUCT OVERVIEW



Image: The main Philips Series 9000 All-In-One Trimmer unit, showcasing its sleek design and power button. The Philips Series 9000 All-In-One Trimmer features a high-quality stainless steel handle with an ergonomic rubber grip for comfortable and controlled use. It is equipped with self-sharpening stainless steel blades designed for long-lasting performance without the need for oil. The device is water-resistant, allowing for convenient use in the shower and easy cleaning under running water.

SETUP

Charging the Trimmer

Before first use, fully charge the trimmer. The powerful lithium-ion battery provides up to 3 hours of runtime on a full charge. A 5-minute quick charge option is available for a single trim.

1. Ensure the trimmer is dry before charging.
2. Connect the supplied USB power cord to the trimmer's charging port.
3. Connect the other end of the USB cable to a compatible USB power adapter (not included).
4. The battery indicator light will show the charging status (low, empty, charging, or full).
5. Disconnect the trimmer from the charger once fully charged.

Attaching and Detaching Heads/Combs

To attach a trimming head or comb, align it with the main unit and press firmly until it clicks into place. To detach, gently pull the head or comb away from the unit.

OPERATING INSTRUCTIONS

General Use

- Press the power button to turn the trimmer on or off.
- Ensure the desired attachment and comb are securely in place before use.

Trimming Beard and Face Hair

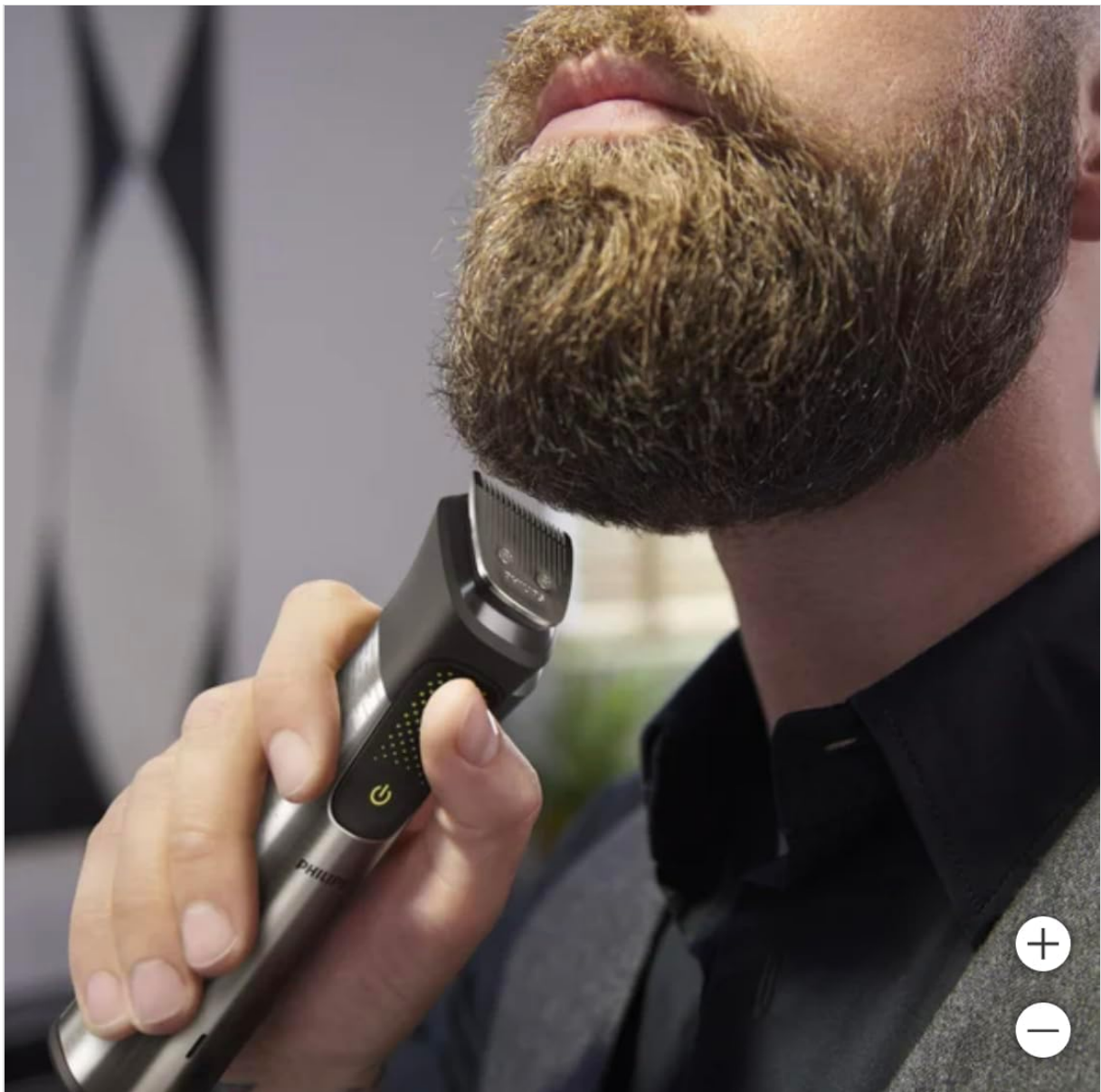


Image: A man precisely trimming his beard using the Philips Series 9000 All-In-One Trimmer. Utilize the BeardSense technology, which scans beard density 125 times per second and adjusts power for efficient trimming. The patented precision trimming comb offers 11 length settings between 1-3 mm for an even trim.

Hair Clipping

For hair clipping, attach the extra-wide 41 mm stainless steel hair clipper. This allows for faster cutting with each stroke.

Body Grooming

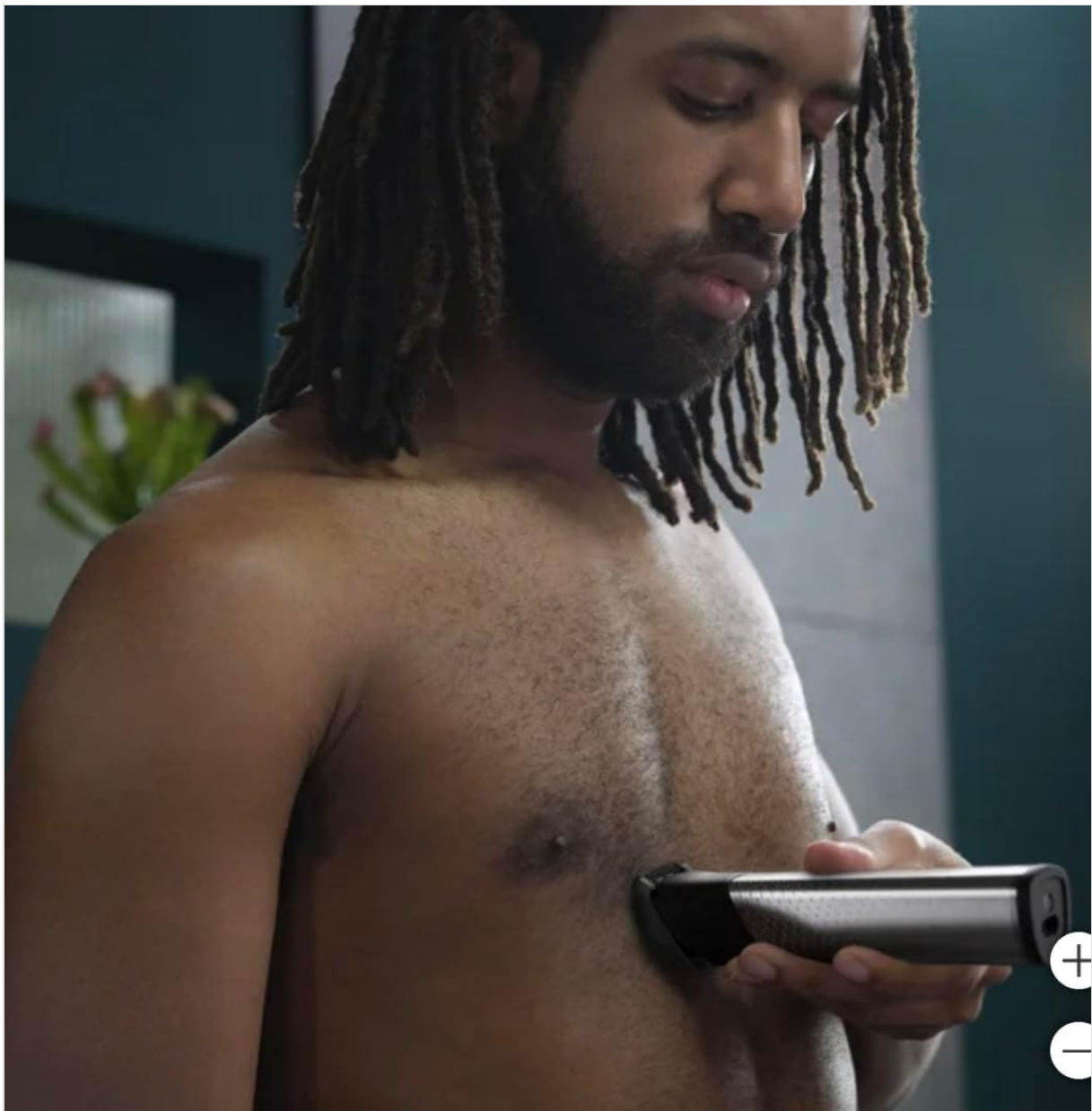


Image: A man using the Philips Series 9000 All-In-One Trimmer to groom his chest hair. Attach the dedicated click-on combs for body grooming (3 mm, 5 mm) to comfortably trim body hair.

Nose, Ear, and Eyebrow Trimming

Use the specialized nose/ear trimmer attachment to safely remove unwanted hair. The dedicated eyebrow comb helps keep eyebrows neat and tidy.

Wet & Dry Use

The trimmer is designed for both wet and dry use. You can comfortably use it in the shower for convenience.

MAINTENANCE

Cleaning

After each use, clean the trimmer and its attachments to ensure optimal performance and hygiene.

- Turn off the trimmer and detach any combs or heads.
- Rinse the trimming head and combs under running tap water.
- Use the supplied cleaning brush to remove any trapped hairs from the blades and inside the trimmer head.
- Wipe the main unit with a damp cloth. Ensure the charging port is dry before storing or recharging.

- Allow all parts to air dry completely before reassembling or storing.

Blade Care

The self-sharpening stainless steel blades do not require oiling. Simply keep them clean as described above.

Storage

Store the trimmer and its accessories in the provided travel pouch in a dry, cool place, away from direct sunlight and moisture.

TROUBLESHOOTING

If you encounter issues with your Philips Series 9000 Trimmer, refer to the following common solutions:

Problem	Possible Cause	Solution
Trimmer does not turn on.	Battery is empty.	Charge the trimmer for at least 5 minutes for a quick trim, or fully charge for up to 3 hours of runtime.
Uneven trimming results.	Hair buildup in the comb/blades, or incorrect attachment/technique.	Clean the trimmer head and comb thoroughly. Ensure the comb is securely attached. Use slow, even strokes against the direction of hair growth.
Trimmer pulls hair.	Blades are clogged or battery is low.	Clean the blades and trimmer head. Ensure the trimmer is fully charged.
Attachments do not fit.	Incorrect attachment for the main unit, or not aligned properly.	Ensure you are using the correct attachment for the Philips Series 9000 model. Align the attachment carefully and press firmly until it clicks.

If the problem persists after trying these solutions, please refer to the Warranty & Support section for further assistance.

SPECIFICATIONS

Feature	Detail
Model Number	MG9560/28
Brand	PHILIPS
Power Source	Battery Powered (Lithium-ion)
Battery Runtime	Up to 3 hours
Quick Charge	5-minute option available
Blade Material	Stainless Steel (Self-sharpening)
Special Features	Cordless, Detachable Head, Dry Shave, Rechargeable, Water Resistant, Skin Protection System, BeardSense technology
Dimensions (L x W x H)	13 x 4.5 x 4.5 cm
Item Weight	0.59 Kilograms
Color	Multicolor
Recommended Uses	Beard trimming, hair clipping, body grooming, nose hair trimming, ear hair trimming, eyebrow maintenance

WARRANTY & SUPPORT

Your Philips Series 9000 All-In-One Trimmer comes with a **2-year warranty** from the date of purchase. This warranty covers defects in materials and workmanship under normal use.

For warranty claims, technical support, or any questions regarding your product, please contact Philips Customer Service. You can find contact information on the official Philips website or through the retailer where you purchased the product.

Manufacturer Contact: Philips, Consumer Lifestyle BV, Tussendiepen 4, 9206 AD Drachten, The Netherlands.
Tel: 1-866-800-9311