

XuanPad K10

XuanPad Full HD 1080P Portable Projector

Model: K10

PRODUCT OVERVIEW

The XuanPad K10 Projector is a versatile home theater device designed for an immersive viewing experience. It features official Netflix licensing, automatic focus and keystone correction, and a highly adaptable 210° rotatable stand. With Full HD 1080P native resolution and 4K support, coupled with 700 ANSI brightness, it delivers clear and vibrant images. Advanced connectivity options include WiFi 6 and Bi-directional Bluetooth 5.2, ensuring seamless streaming and audio integration. The projector also incorporates a dust removal and efficient heat dissipation design for enhanced durability and performance.



Image: The XuanPad K10 Projector showcasing its compact design and integration with streaming services.

SETUP GUIDE

Follow these steps for initial setup of your XuanPad K10 Projector:

1. **Unboxing:** Carefully remove all components from the packaging. Ensure you have the projector, power cord, remote, HDMI cable, and AV cable.
2. **Power Connection:** Connect the power cord to the projector's power input port and then to a power outlet. The power indicator light will illuminate.
3. **Placement:** Place the projector on a stable, flat surface. The 210° rotatable stand allows for flexible positioning, including ceiling, tabletop, or floor mounting.
4. **Initial Power On:** Press the power button on the projector or the remote control to turn on the device.
5. **Network Setup:** Navigate to the 'Network' settings to connect to your Wi-Fi network. The projector supports fast WiFi 6 for stable wireless connections.
6. **Auto Focus & Keystone Correction:** The projector features state-of-the-art AI focus and displacement gyroscope technology that automatically focuses and corrects trapezoidal distortion within 3 seconds. Manual adjustments can also be made via the remote if needed.

7. **App Access:** The smart system provides seamless access to certified apps like Netflix. Ensure you are logged into your accounts to access content.



Image: Rear view of the projector highlighting the power input, USB, and HDMI ports for connectivity.

OPERATING INSTRUCTIONS

Adjusting Image Quality

- **Auto Focus & Keystone:** The projector automatically adjusts focus and corrects trapezoidal distortion. For manual adjustment, use the remote control's focus and keystone buttons.
- **Zoom Function:** Adjust the image size from 50% to 100% using the zoom setting in the menu.
- **Brightness & Color:** The projector offers 700 ANSI brightness and covers 99% of the NTSC color gamut. Adjust picture mode settings (e.g., standard, vivid, user) via the menu for optimal viewing.

Auto Screen Adjustment

No need manual adjustment, enjoy hassle-free clarity



Auto Focus



Auto Keystone Correction



Digital Zoom

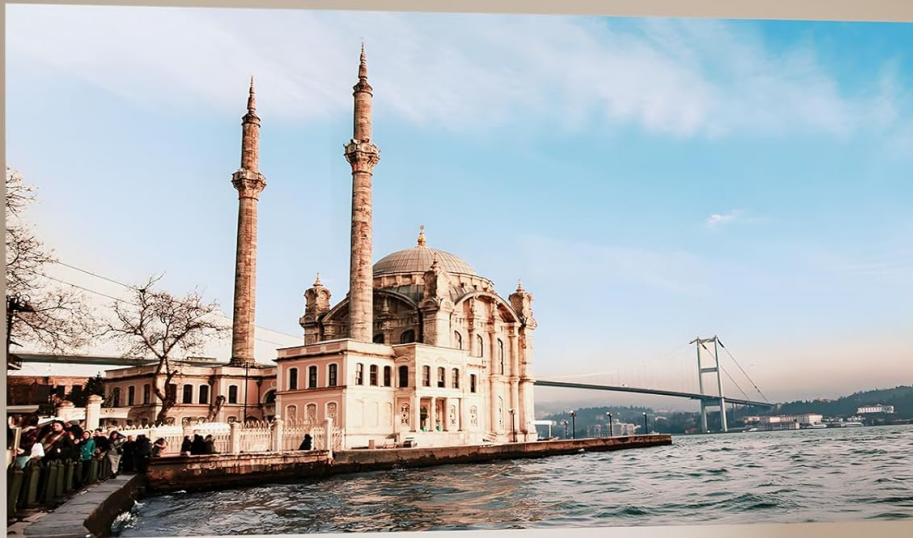
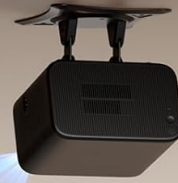


Image: Visual representation of the projector's auto focus and auto keystone correction features.

Connectivity

- **Wi-Fi 6:** Connect to your home network for high-speed, stable streaming and wireless projection.
- **Bi-directional Bluetooth 5.2:** Connect external speakers or headphones for enhanced audio, or use the projector as a standalone Bluetooth speaker.
- **HDMI & USB:** Use the HDMI port to connect external devices like laptops, gaming consoles, or streaming sticks. The USB port allows for media playback from USB drives.

Meet Your Different Installation Needs



1 Ceiling Mount



2 Tabletop Mount



3 Floor Mount



Image: Depiction of the projector's ultra-fast WiFi 6 capabilities for smooth streaming.

MAINTENANCE

Regular maintenance ensures optimal performance and longevity of your projector:

- **Dust Removal:** The projector is designed with features to minimize dust accumulation. Periodically clean the exterior with a soft, dry cloth. Avoid using abrasive cleaners or solvents.
- **Heat Dissipation:** Ensure proper ventilation around the projector to allow for effective heat dissipation. Do not block the vents.
- **Lens Cleaning:** Use a specialized lens cleaning cloth and solution to gently clean the projector lens. Avoid touching the lens directly with your fingers.
- **Storage:** When not in use for extended periods, store the projector in a cool, dry place, away from direct sunlight and extreme temperatures.

TROUBLESHOOTING

If you encounter issues with your XuanPad K10 Projector, refer to the following common solutions:

- **No Image/Blurry Image:**

- Ensure the power cord is securely connected.
 - Check the focus and keystone settings. The auto-focus feature should correct most blurriness.
 - Verify the input source (HDMI, Home) is correctly selected.
 - Adjust the projector's position to be perpendicular to the screen/wall.
- **No Sound:**
 - Check the projector's volume level and ensure it is not muted.
 - Verify audio connection cables (if using external speakers) are properly connected.
 - Adjust audio output settings on the connected device.
 - If using Bluetooth, ensure the external speaker is paired and connected.
- **Connectivity Issues (Wi-Fi/Bluetooth):**
 - Ensure the Wi-Fi network is stable and within range.
 - Restart the projector and your Wi-Fi router.
 - For Bluetooth, ensure the external device is in pairing mode and within range.
- **Remote Control Not Responding:**
 - Check and replace the batteries in the remote control.
 - Ensure there are no obstructions between the remote and the projector's IR receiver.

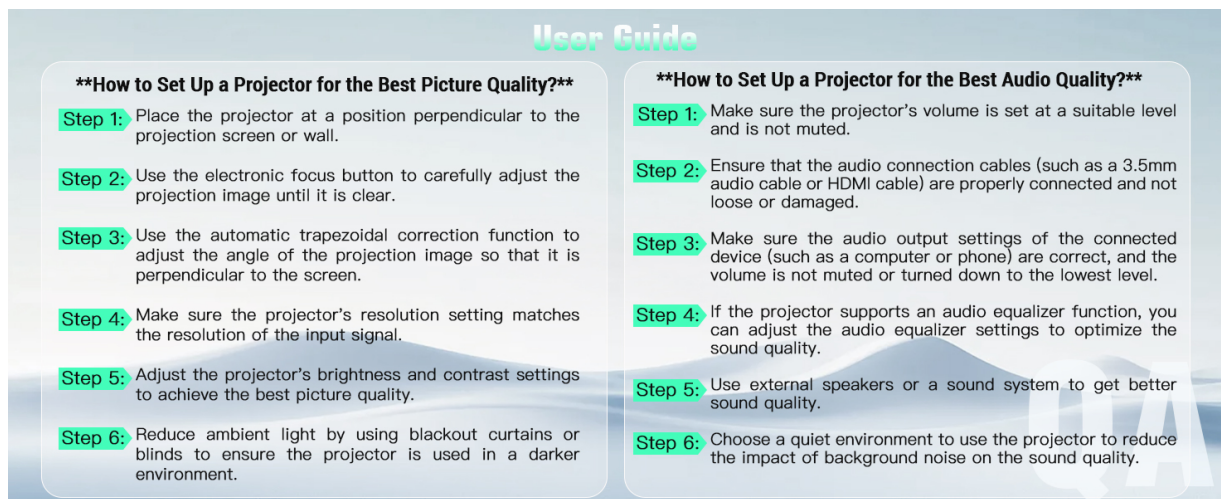


Image: Detailed user guide providing tips for optimizing picture and audio quality.

SPECIFICATIONS

Feature	Detail
Brand	XuanPad
Model Number	K10
Item Weight	5.35 pounds
Product Dimensions	7.7 x 4.3 x 6.1 inches
Color	Black

Display Resolution	1920 x 1080 (Native 1080P, 4K Support)
Brightness	700 ANSI
Connectivity Technology	Bluetooth, HDMI, USB, Wi-Fi
Special Features	Auto Focus; Built-in Apps (Netflix licensed); 360° Rotatable Stand; 70° Vertical Adjustment; Auto Keystone Correction; Bi-directional Bluetooth 5.2; 50%-100% Zoom; 3D Stereo Sound; Portable Size
Visible Screen Diagonal	300" / 762 cm

WARRANTY & SUPPORT

Your XuanPad K10 Projector is designed for reliability and performance. For any inquiries or assistance, please refer to the following:

- **Protection Plans:** Extended protection plans are available for purchase, including 2-Year and 3-Year options.
- **Customer Service:** XuanPad offers 24/7 professional customer service.
- **Technical Support:** Lifetime technical support is provided for your product.
- **Authenticity:** This product is Verified by Transparency, ensuring its authenticity with a unique code verified before shipping.

For further assistance, please contact XuanPad customer support through their official channels.



Image: Information regarding XuanPad's 24/7 professional service and lifetime technical support.