

[Manuals.plus](#) /

> [eXtremeRate](#) /

> eXtremeRate Custom Replacement Housing Shell for GBA SP (IPS & Standard LCD Compatible) - Matcha Green

## eXtremeRate ASPP3008

# eXtremeRate Custom Replacement Housing Shell for GBA SP

Model: ASPP3008 - Compatible with IPS & Standard LCD

### INTRODUCTION

---

This instruction manual provides detailed guidance for installing the eXtremeRate custom replacement housing shell for your Game Boy Advance SP console. This shell is designed to be compatible with both IPS and standard LCD screens, offering a fresh new look and feel for your device. Please note that the console and screen are not included with this product.

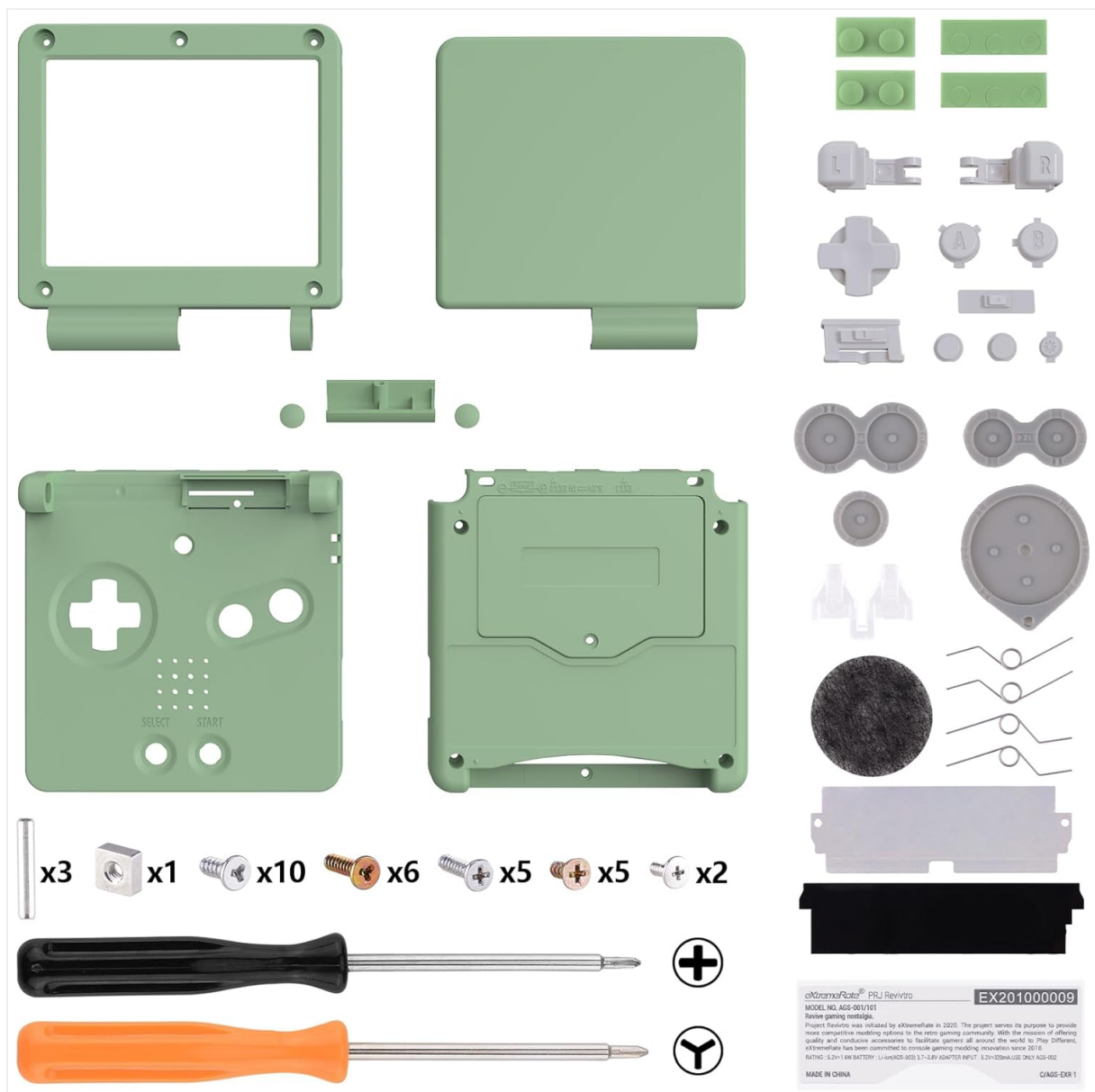


Image: The eXtremeRate GBA SP Custom Housing Shell in Matcha Green, shown in its open position.

## WHAT'S INCLUDED

Your package contains the following components:

- Full replacement housing shell for GBA SP
- Replacement buttons (A, B, D-pad, Start, Select, L, R, Power, Volume)
- Screen frame
- Various screws and small internal components
- Installation tools (screwdrivers)

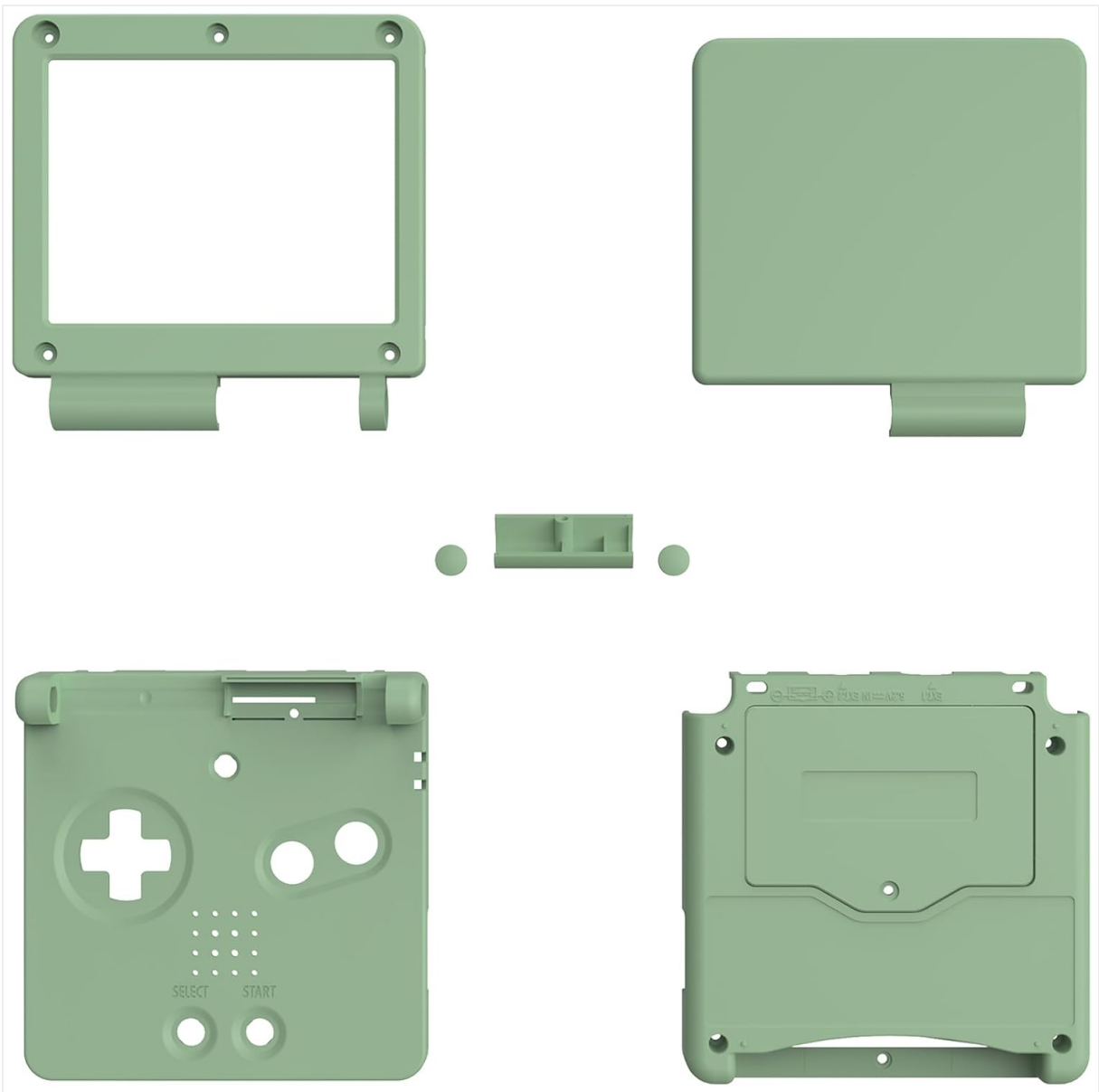


Image: An exploded view showing all components included in the eXtremeRate GBA SP Custom Housing Shell kit.



Image: A detailed layout of the custom replacement housing shell parts, including the front and back shells, screen frame, and buttons.

## SETUP AND INSTALLATION

---

Replacing the console shell requires disassembling your Game Boy Advance SP. This process involves careful handling of small components and electronics. Installation is performed at your own risk.

### Required Tools (Included)

- Tri-wing screwdriver
- Phillips head screwdriver

### Installation Steps Overview

1. **Disassemble the Original Console:** Carefully remove all external screws and open the console. Pay attention to ribbon cables and connectors.
2. **Transfer Internal Components:** Move the motherboard, screen, battery, speakers, and other internal parts from the old shell to the new eXtremeRate housing.
3. **Install New Buttons:** Place the new replacement buttons into their respective slots in the new shell.
4. **Assemble the New Shell:** Close the new housing, ensuring all components are correctly seated and secured. Fasten all screws.

For a visual guide, please search for "eXtremeRate Upgraded Shell for GBA SP" or "R7EHybsHhE4" on YouTube to find detailed installation videos. These videos provide step-by-step instructions that can greatly assist with the assembly process.

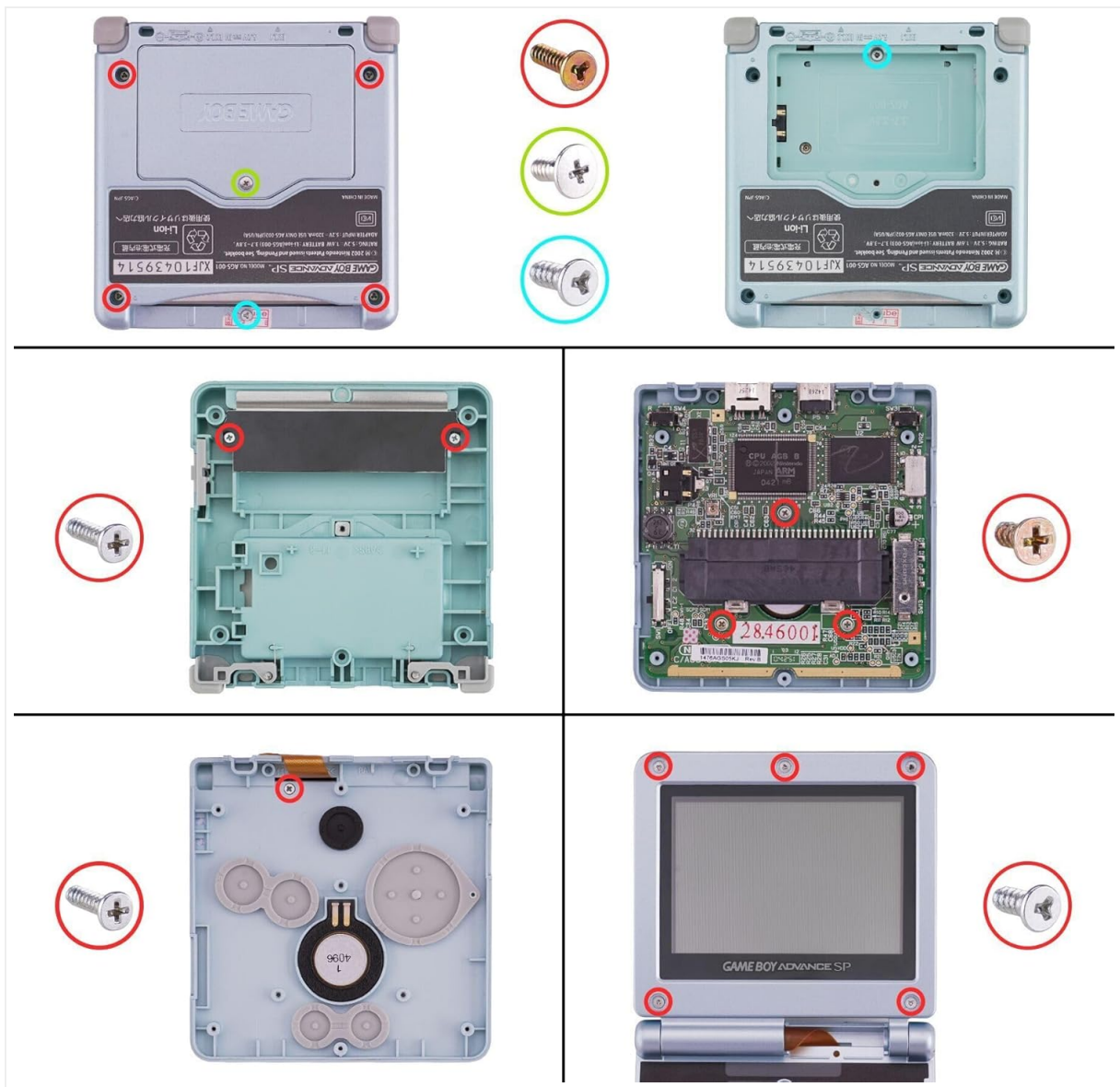


Image: A diagram highlighting the various screw locations on the GBA SP console that need to be removed during disassembly.

## OPERATING

Once the eXtremeRate custom housing shell is successfully installed, your Game Boy Advance SP will operate as usual. The new shell provides a durable and aesthetically pleasing exterior without altering the console's core functionality. The matte finish offers a comfortable grip during gameplay.



Image: The eXtremeRate GBA SP Custom Housing Shell in its open position, ready for use.

## MAINTENANCE

To ensure the longevity and appearance of your eXtremeRate custom housing shell, follow these maintenance guidelines:

- **Cleaning:** Use a soft, dry, or slightly damp cloth to wipe down the shell. Avoid abrasive cleaners or solvents, as these can damage the matte finish.
- **Storage:** Store your console in a clean, dry environment away from direct sunlight and extreme temperatures.
- **Handling:** While the ABS material is durable, avoid dropping the console or subjecting it to excessive force to prevent cracks or damage.

## TROUBLESHOOTING

If you encounter issues after installing the new shell, consider the following:

- **Console Not Powering On:** Double-check all internal connections, especially the battery and power switch. Ensure no ribbon cables are pinched or improperly seated.
- **Buttons Not Responding:** Verify that all button membranes and contacts are correctly aligned and clean. Ensure the new buttons are properly seated.
- **Screen Issues:** If the screen is not displaying correctly, re-check the screen's ribbon cable connection to the motherboard. Ensure it is fully inserted and not damaged.
- **Loose Shell:** Ensure all screws are tightened appropriately. Do not overtighten.

If problems persist, refer to the installation videos mentioned in the Setup section or contact eXtremeRate customer support for further assistance.

## SPECIFICATIONS

|       |             |
|-------|-------------|
| Brand | eXtremeRate |
|-------|-------------|

|                                   |  |
|-----------------------------------|--|
| <b>Model Number</b>               | ASPP3008   |
| <b>Color</b>                      | Matcha Green   |
| <b>Product Dimensions (LxWxH)</b> | 30 x 20 x 10 mm  |
| <b>Product Weight</b>             | 10 grams   |
| <b>Material</b>                   | Premium ABS  |
| <b>Compatibility</b>              | Game Boy Advance SP (GBA SP), IPS and Standard LCD screens |

## **WARRANTY AND SUPPORT**

---

For information regarding product warranty, returns, or technical support, please refer to the official eXtremeRate website or contact their customer service directly. Specific warranty terms may vary by region and retailer.