

Manuals+

[Q & A](#) | [Deep Search](#) | [Upload](#)

manuals.plus /

› [FRP](#) /

› [FRP MB40 4-Stroke Mini Bike Instruction Manual](#)

FRP MB40

FRP MB40 4-Stroke Mini Bike Instruction Manual

Model: MB40

INTRODUCTION

This manual provides essential information for the safe assembly, operation, and maintenance of your FRP MB40 4-Stroke Mini Bike. Please read this manual thoroughly before operating the mini bike to ensure proper use and to prevent injury or damage.



Image: The FRP MB40 4-Stroke Mini Bike, showcasing its compact design and the included basic tools for assembly.

SAFETY INFORMATION

WARNING: This product is intended for proper use in safe and appropriate environments only. Dangerous riding behaviors such as wheelies or jumps are strictly prohibited. The manufacturer shall not be held liable for any injuries or damages resulting from improper use or handling of the product.

Proposition 65 Warning: This product may contain chemicals known to the State of California to cause cancer and birth defects or other reproductive harm.

- Always wear appropriate safety gear, including a helmet, eye protection, gloves, and sturdy footwear.
- Ensure the mini bike is in good working condition before each ride.
- Operate only in designated areas, away from public roads and traffic.
- Supervise young riders at all times.
- Familiarize yourself with the emergency kill switch and braking system.

✓ TAILORED FOR YOUNG RIDERS

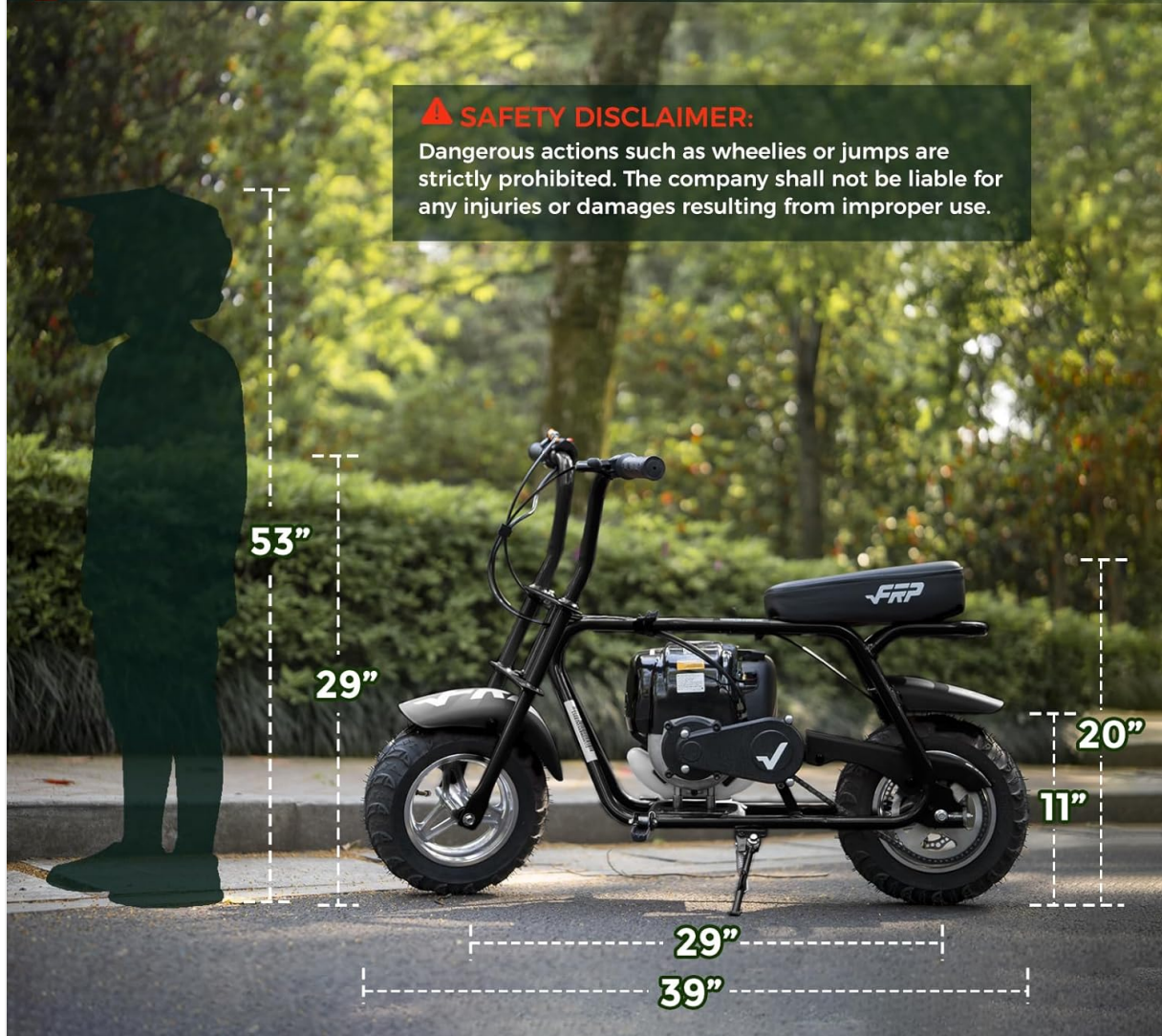


Image: A diagram illustrating the dimensions of the FRP MB40 Mini Bike and reiterating the safety disclaimer regarding prohibited dangerous riding behaviors.

PACKAGE CONTENTS

Upon opening the package, verify that all the following components are present:

- MB40 Mini Bike (main frame with engine)
- Front wheel
- Front fork
- Handlebar
- Front fender
- Assembly tools (typically included)

ASSEMBLY INSTRUCTIONS

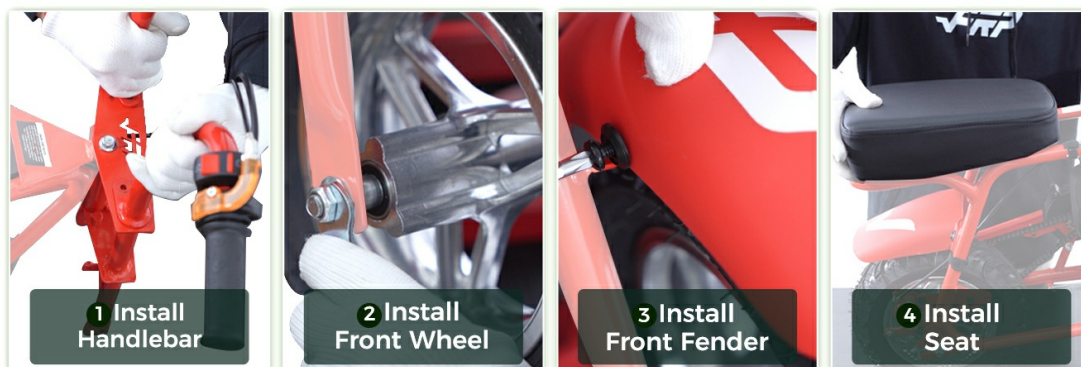
The FRP MB40 Mini Bike is designed for easy assembly with most components pre-installed. All necessary tools are typically included. Follow these steps for quick setup:

1. **Install Handlebar:** Attach the handlebar to the front fork assembly. Ensure it is securely fastened

and aligned for comfortable riding.

2. **Install Front Wheel:** Mount the front wheel onto the front fork. Verify that all nuts and bolts are tightened to the manufacturer's specifications.
3. **Install Front Fender:** Secure the front fender above the front wheel.
4. **Install Seat:** Attach the seat to the main frame. The unified bolt system simplifies this process.

SIMPLE INSTALLATION STEPS



NOTE: PLEASE REFER TO THE INSTALLATION VIDEO OR CONTACT FRP CUSTOMER SERVICE FOR DETAILS

Image: A visual guide demonstrating the four simple installation steps: handlebar, front wheel, front fender, and seat.

OPERATING INSTRUCTIONS

Starting the Engine

The FRP MB40 features an easy-start mechanism. To start the 40CC 4-stroke engine:

1. Ensure the fuel tank contains fresh gasoline.
2. Locate the pull-start mechanism.
3. Engage the choke if the engine is cold (refer to engine manual for specific choke operation).
4. Pull the starter cord firmly and smoothly until the engine starts.
5. Once started, gradually disengage the choke.



Image: A child demonstrating the simple pull-start method for the FRP Mini Bike, highlighting its user-friendly design.

Riding the Mini Bike

The MB40 is designed for young riders, offering a maximum speed of 18 mph and supporting up to 165 lbs. It features a 4-stroke engine, which provides stable operation and reduced noise compared to 2-stroke engines, and does not require oil mixing with fuel.

- Familiarize yourself with the throttle and brake controls before riding.
- Always maintain a safe speed and be aware of your surroundings.
- Utilize the dual disc brakes for effective stopping power.
- The emergency kill switch provides an immediate engine shut-off for safety.

RIDE IN PLEASURE & SAFETY



Image: A child riding the FRP Mini Bike, with callouts for key safety features including the emergency kill switch, anti-scratch enclosure, and dual disc brakes.

MAINTENANCE

Regular maintenance ensures the longevity and safe operation of your FRP MB40 Mini Bike.

- **Oil Changes:** The 4-stroke engine is designed for 10W-40 oil. Refer to the engine manual for recommended oil change intervals and procedures. Regular oil changes are crucial for engine health.
- **Tire Pressure:** Check tire pressure before each ride. Maintain recommended pressure for optimal performance and safety. The knobby off-road tires are designed for various terrains.
- **Brake Inspection:** Regularly inspect brake levers, cables, and disc pads for wear and proper function. Adjust or replace components as needed.
- **Chain Maintenance:** Keep the drive chain clean and properly lubricated. Check for correct tension.
- **General Inspection:** Periodically check all nuts, bolts, and fasteners for tightness. Ensure the anti-scratch enclosure is intact.



SAFE & CONTROLLED RIDE

Sporty Seat Design

Sturdy Build

Knobby Off-Road Tires

Image: Detailed views of the FRP Mini Bike's features, including the sporty seat design, sturdy frame construction, and knobby off-road tires suitable for diverse riding conditions.

SPECIFICATIONS

Feature	Detail
Brand	FRP
Model	MB40 Mini Dirt Bike
Engine Type	40CC 4-Stroke
Max Speed	18 Mph
Max Load Capacity	165 LBS
Recommended Oil	10W-40
Item Weight	46 pounds
Product Dimensions	38.5 x 20 x 11 inches

Feature	Detail
Special Features	4 Stroke Stronger Power, Durable, Kill Switch, Multi-Speed, Rear Disc Brake



Image: A child riding the FRP Mini Bike, visually representing its 40CC 4-stroke engine capabilities, including a maximum range of 16 miles, a top speed of 18 mph, and a maximum load capacity of 165 lbs.

TROUBLESHOOTING

This section provides general guidance for common issues. For detailed troubleshooting, please refer to the engine manual or contact customer support.

- **Engine Not Starting:** Check fuel level, ensure the kill switch is in the "run" position, and verify the spark plug connection. If cold, ensure the choke is engaged.
- **Loss of Power:** Inspect fuel filter, air filter, and spark plug. Ensure proper oil level.
- **Brake Issues:** Check brake cable tension and disc pad wear. Adjust or replace as necessary.
- **Unusual Noises:** Stop operation immediately and inspect for loose parts, chain issues, or engine problems.

WARRANTY AND CUSTOMER SUPPORT

FRP provides comprehensive customer service for your MB40 Mini Bike:

- **60-Day Customer Service:** Includes no-cost parts replacement and a pre-paid return label for eligible issues.
- **365-Day Technical Support:** Available to assist with any technical questions or concerns.
- **Returns:** Please retain original packaging for 60 days for smooth returns.
- **Important:** Any unauthorized modifications will void the warranty.

For support, please contact FRP customer service directly. Visit the [FRP Store on Amazon](#) for more information.



Image: An overview of FRP's after-sales policy, detailing 60 days of free parts and returns, and emphasizing contacting FRP service for assistance.