

## ZEBRONICS ZEB-SHEER

# ZEBRONICS Sheer Rechargeable Wireless Mouse (ZEB-SHEER) User Manual

Model: ZEB-SHEER | Brand: ZEBRONICS

## INTRODUCTION

This manual provides detailed instructions for the setup, operation, and maintenance of your ZEBRONICS Sheer Rechargeable Wireless Mouse (ZEB-SHEER). This mouse features dual-mode connectivity (2.4GHz wireless and Bluetooth), a transparent body with RGB lighting, silent operation, and a built-in rechargeable battery. Please read this manual thoroughly before using the product to ensure proper function and longevity.

## WHAT'S IN THE BOX

- Mouse - 1 unit
- USB Nano Receiver - 1 unit
- Charging cable - 1 unit
- Quick User Guide - 1 unit

## PRODUCT FEATURES

- **Ergonomic and Transparent Design:** Lightweight and portable with a sleek transparent body and RGB LED lights.
- **Dual Mode Connectivity:** Supports both 2.4GHz wireless and Bluetooth connections.
- **Dual Bluetooth Connections:** Seamlessly switch between two paired Bluetooth devices.
- **Adjustable DPI:** 4-level DPI settings up to 2400 DPI for precise cursor control.
- **USB Nano Receiver:** Removable receiver for 2.4GHz plug-and-play functionality.
- **5 Buttons:** Includes a dedicated desktop button, DPI control switch, right & left click, and middle scroll wheel.
- **Rechargeable Battery:** Built-in battery with Type-C charging.
- **LED Indicator:** Provides information on battery life and connectivity status.
- **Silent Operation:** Designed for a quiet work environment.
- **Mode Switch Button:** Allows toggling between 2.4GHz wireless and Bluetooth connections, or between paired Bluetooth devices.

# SETUP INSTRUCTIONS

## 1. Powering On/Off

Locate the ON/OFF switch on the bottom of the mouse. Slide the switch to the "ON" position to power on the mouse. Slide it to "OFF" to power off.

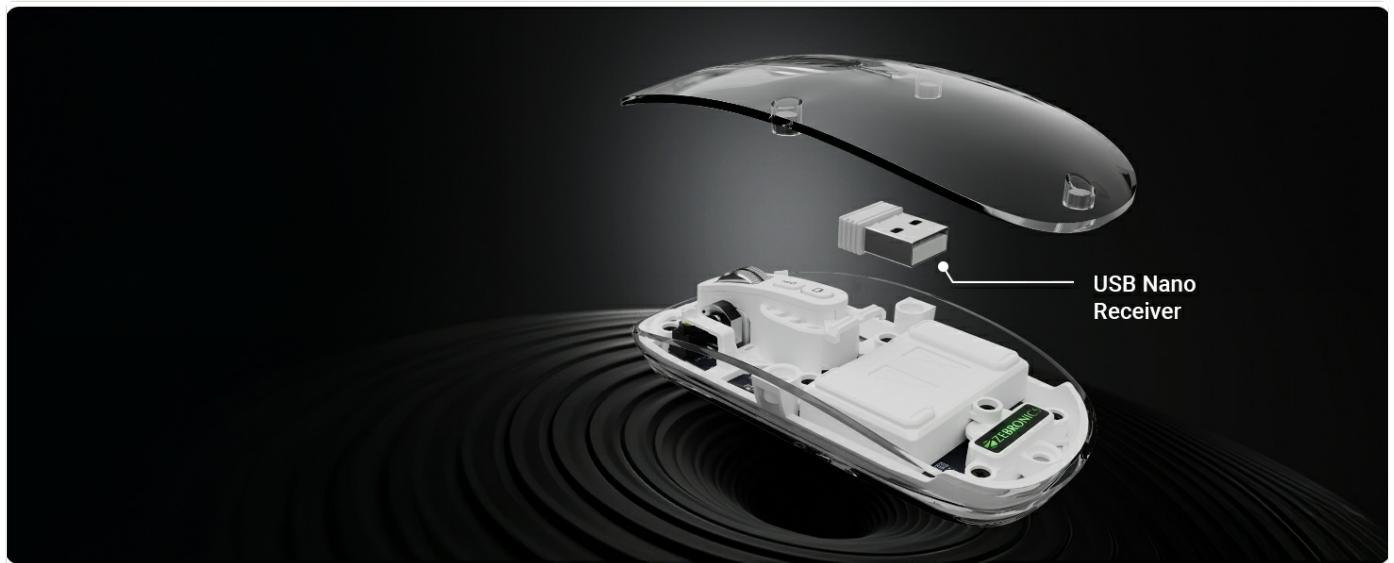


Image: Bottom view of the mouse with ON/OFF and mode switches labeled.

## 2. Connecting via 2.4GHz Wireless Mode

1. Locate the USB Nano Receiver. It is stored magnetically under the top panel of the mouse. Gently lift the top cover to access it.
2. Insert the USB Nano Receiver into an available USB port on your computer or laptop.
3. Ensure the mouse is powered on.
4. Press the Mode Switch button on the bottom of the mouse until the LED indicator shows 2.4G mode (usually a specific color or blinking pattern). The mouse should automatically connect to your device.



Image: USB Nano Receiver location and removal.



Image: Mouse connected via USB Nano Receiver to a laptop.

### 3. Connecting via Bluetooth Mode (BT1 / BT2)

1. Ensure the mouse is powered on.
2. Press the Mode Switch button on the bottom of the mouse to select either BT1 or BT2 mode. The corresponding LED indicator will flash, indicating it's ready for pairing.
3. On your device (computer, laptop, tablet, or smartphone), go to Bluetooth settings.
4. Search for new Bluetooth devices. The mouse should appear as "ZEB-SHEER" or similar.
5. Select the mouse to pair. Once paired, the LED indicator will stop flashing and remain solid.
6. To connect a second Bluetooth device, repeat steps 2-5, selecting the other Bluetooth mode (BT1 if you used BT2, or vice versa).

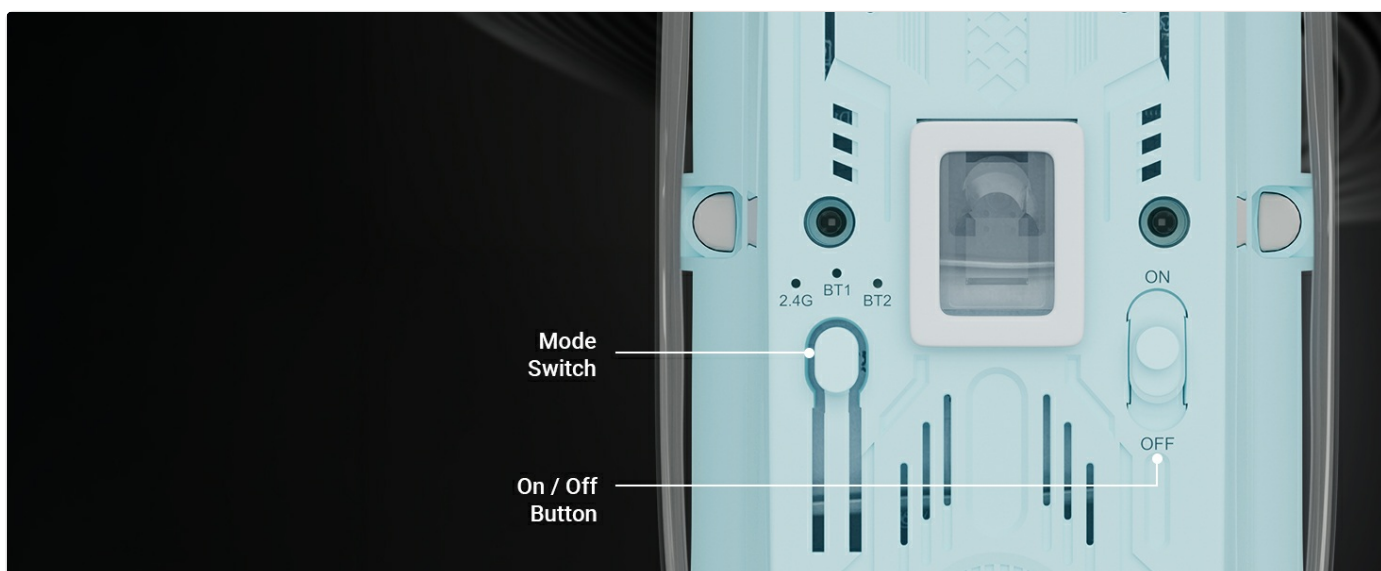


Image: Mode switch button on the mouse bottom.

## OPERATING INSTRUCTIONS

### 1. Button Functions

The ZEB-SHEER mouse features 5 buttons for various functions:

- **Left Click:** Standard selection and activation.
- **Right Click:** Context menu access.



- **Scroll Wheel (Middle Click):** Scrolling and middle-click function.
- **DPI Control Switch:** Adjusts cursor sensitivity.
- **Dedicated Desktop Button:** Quickly minimizes all open windows to show the desktop.



Image: Labeled buttons on the mouse.

## 2. DPI Adjustment

The mouse offers 4 levels of DPI (Dots Per Inch) for adjusting cursor speed and sensitivity. Press the **DPI Control Switch** button (located near the scroll wheel) to cycle through the available DPI settings: 800, 1200, 1600, and 2400 DPI. Select the setting that best suits your preference and task.



Image: DPI levels and control button.

## 3. Charging the Mouse

The ZEB-SHEER mouse has a built-in rechargeable battery. To charge, connect the provided Type-C charging cable to the charging port on the front of the mouse and the other end to a USB power source (e.g., computer USB port, USB wall adapter). The LED indicator will show charging status.



Image: Mouse connected for Type-C charging.

## 4. LED Indicator

The LED indicator on the mouse provides visual feedback on battery status and connectivity. Refer to the quick user guide for specific LED patterns and their meanings. Generally, a flashing LED indicates pairing mode or low battery, while a solid LED indicates a stable connection or full charge.

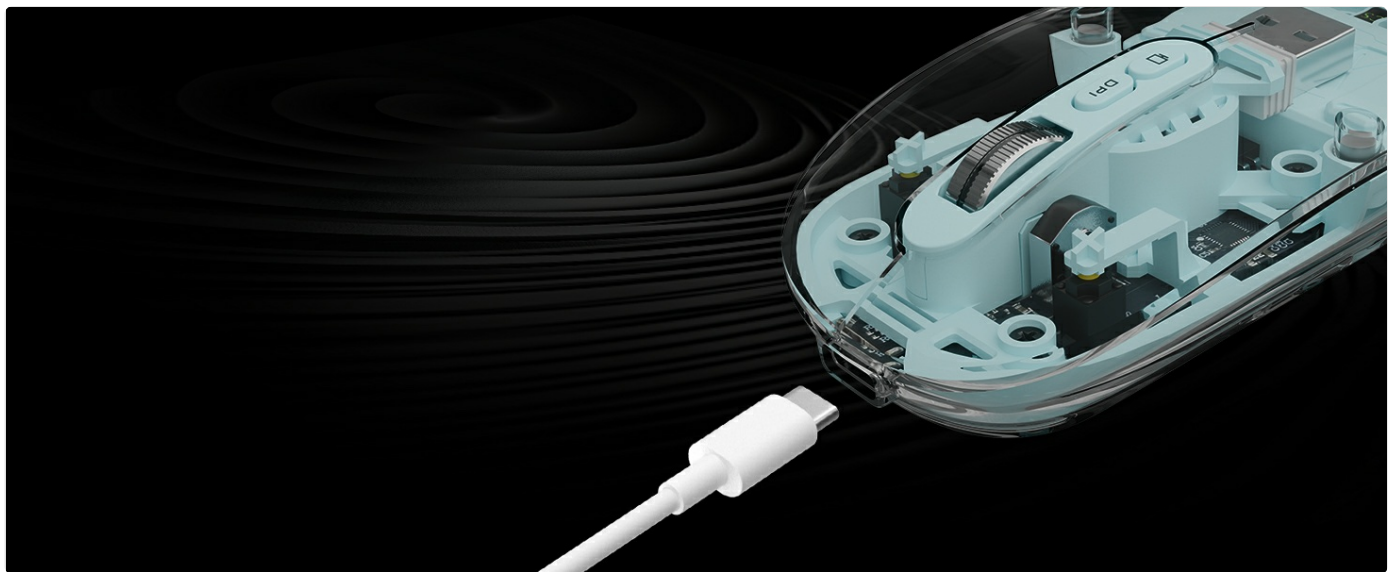


Image: LED indicator for battery and connectivity status.

## MAINTENANCE

- **Cleaning:** Use a soft, dry cloth to clean the mouse. Avoid using harsh chemicals or abrasive materials.
- **Storage:** When not in use, store the mouse in a cool, dry place.
- **Battery Care:** Avoid fully discharging the battery frequently to prolong its lifespan. Charge the mouse regularly.
- **Receiver Storage:** Store the USB Nano Receiver inside the mouse when traveling to prevent loss.

## TROUBLESHOOTING

Problem	Solution
---------	----------

Problem	Solution
Mouse not responding (2.4GHz)	<ul style="list-style-type: none"><li>◦ Ensure the mouse is powered ON.</li><li>◦ Check if the USB Nano Receiver is securely plugged into a working USB port.</li><li>◦ Verify the mouse is in 2.4GHz mode using the Mode Switch button.</li><li>◦ Try plugging the receiver into a different USB port.</li><li>◦ Recharge the mouse if the battery is low.</li></ul>
Mouse not connecting (Bluetooth)	<ul style="list-style-type: none"><li>◦ Ensure the mouse is powered ON and in the correct BT1 or BT2 mode.</li><li>◦ Make sure Bluetooth is enabled on your device.</li><li>◦ Unpair and re-pair the mouse in your device's Bluetooth settings.</li><li>◦ Recharge the mouse if the battery is low.</li><li>◦ Ensure no other Bluetooth devices are interfering.</li></ul>
Cursor movement is erratic or slow	<ul style="list-style-type: none"><li>◦ Clean the optical sensor on the bottom of the mouse.</li><li>◦ Adjust the DPI setting using the DPI Control Switch.</li><li>◦ Ensure you are using the mouse on a suitable surface (not highly reflective or transparent).</li><li>◦ Check for low battery.</li></ul>
Mouse not charging	<ul style="list-style-type: none"><li>◦ Ensure the Type-C cable is properly connected to both the mouse and the power source.</li><li>◦ Try a different USB port or charging adapter.</li><li>◦ Verify the charging cable is not damaged.</li></ul>

SPECIFICATIONS

Feature	Detail
Brand	ZEBRONICS
Model Number	ZEB-SHEER
Connectivity Technology	2.4GHz Wireless, Bluetooth (BT1, BT2)
Movement Detection Technology	Optical
DPI Levels	800, 1200, 1600, 2400
Number of Buttons	5
Power Source	Rechargeable Battery
Charging Port	Type-C
Operating System Compatibility	Linux, Windows 7, Windows XP (and newer versions)

Feature	Detail
Hardware Platform	Laptop, Personal Computer
Item Dimensions (LxWxH)	11 x 5.7 x 0.1 cm
Item Weight	72 g

## WARRANTY AND SUPPORT

The ZEBRONICS Sheer Rechargeable Wireless Mouse (ZEB-SHEER) comes with a **1-year warranty** from the date of purchase. For warranty claims, technical support, or further assistance, please refer to the contact information provided in the Quick User Guide included with your product or visit the official ZEBRONICS website.

**Manufacturer:** Zebronics India Private Limited  
**Address:** No.13/7, Smith Road, Royapettah, Chennai - 600 002

