

Kidde 30CUDR

Kidde 30CUDR Smoke and Carbon Monoxide Detector User Manual

Model: 30CUDR

1. INTRODUCTION

This manual provides essential information for the proper installation, operation, and maintenance of your Kidde 30CUDR Smoke and Carbon Monoxide (CO) Detector. This device is designed to alert you to the presence of smoke and carbon monoxide, providing crucial early warning for household safety. Please read this manual thoroughly before installation and retain it for future reference.

2. SAFETY INFORMATION

Your Kidde 30CUDR detector is a dual-sensor device, providing protection against both smoke and carbon monoxide. It is comprehensively tested and designed to meet the latest UL standards, specifically UL 217 9th Edition, UL 2034 4th Edition, and FCC requirements. This unit features enhanced sensing technology to help reduce nuisance alarms often caused by cooking.

Important Safety Notes:

- This device is not a substitute for proper fire safety practices or local building codes.
- Regular testing is crucial to ensure proper operation.
- Do not paint the detector.
- Do not place alarms within 5 feet of appliances that produce combustion byproducts.

3. SETUP AND INSTALLATION

3.1 Package Contents

- Kidde 30CUDR Smoke and CO Detector (4 units)
- AA Alkaline Batteries (2 per unit)
- Mounting Hardware
- User Guide

3.2 Battery Installation

The Kidde 30CUDR detector is powered by two AA alkaline batteries (included). Ensure batteries are installed correctly before mounting.



AA BATTERY POWERED

Includes 2 AA replaceable batteries.



Image Description: A close-up view of the back of the Kidde 30CUDR detector with its battery compartment open. Two AA alkaline batteries are visible, being inserted into their designated slots. The image highlights the battery-powered nature of the device and the ease of battery replacement.

3.3 Mounting the Detector

The detector features a simple twist-and-click mounting bracket for easy installation. Follow these steps:

1. Attach the mounting bracket to the ceiling or wall using the provided hardware.
2. Twist the 5-inch smoke and CO alarm onto the bracket until it clicks securely into place.



SIMPLE INSTALLATION

Easy twist-and-click
mounting bracket.

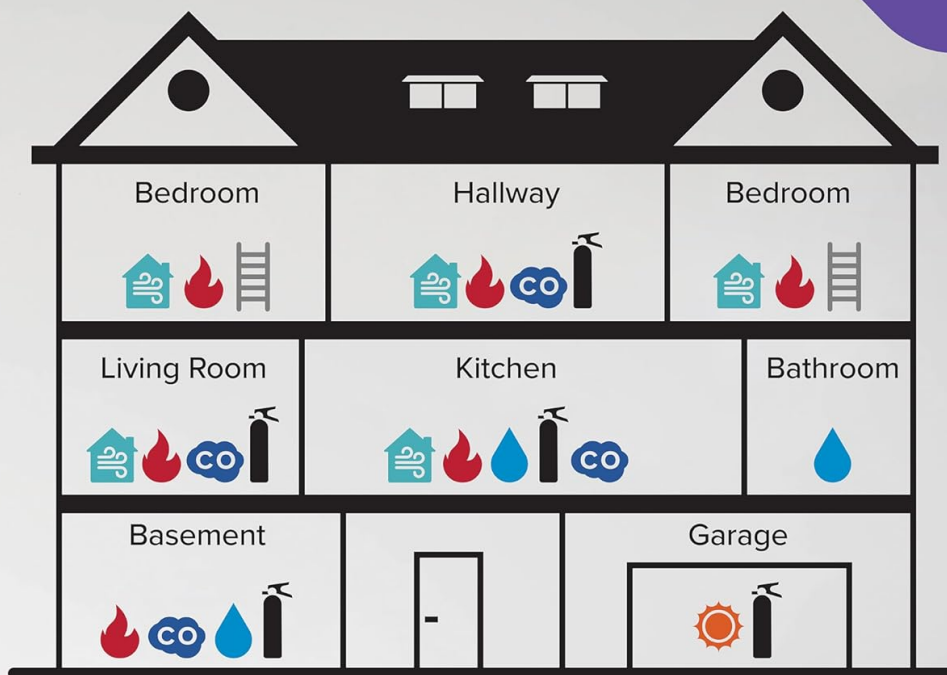


Image Description: A man standing on a blue step ladder, reaching up to install a white Kidde 30CUDR smoke and carbon monoxide detector onto a white ceiling. The image illustrates the simple twist-and-click installation process.

3.4 Recommended Placement

For optimal protection, strategically place detectors throughout your home. General recommendations include:

- Install at least one smoke alarm on every level of your home, including the basement.
- Install smoke alarms inside every bedroom.
- Install CO alarms on every level of your home and in sleeping areas.
- Avoid placing alarms within 5 feet of fuel-burning appliances.



Hazard Types



Smoke Alarm



Indoor Air Quality Monitor



Fire Extinguisher



Escape Ladder



Carbon Monoxide Alarm



Water Leak + Freeze Detector



Heat Alarm

NOTE: Do not place alarms within 6 ft of appliances. These are general recommendations only, as every home is different. See specific user guides (Smoke, CO, Ladder, etc) for more detailed location information.

Image Description: A diagram illustrating a two-story house layout with various rooms (bedroom, hallway, living room, kitchen, bathroom, basement, garage). Icons indicate recommended locations for smoke alarms, carbon monoxide alarms, indoor air quality monitors, water leak/freeze detectors, heat alarms, and fire extinguishers. The diagram emphasizes placing smoke and CO alarms in bedrooms, hallways, living rooms, and basements.

4. OPERATING THE DETECTOR

4.1 LED Notifications

The detector provides visual status updates through its LED indicator:

LED NOTIFICATIONS

At-a-glance alarm status.

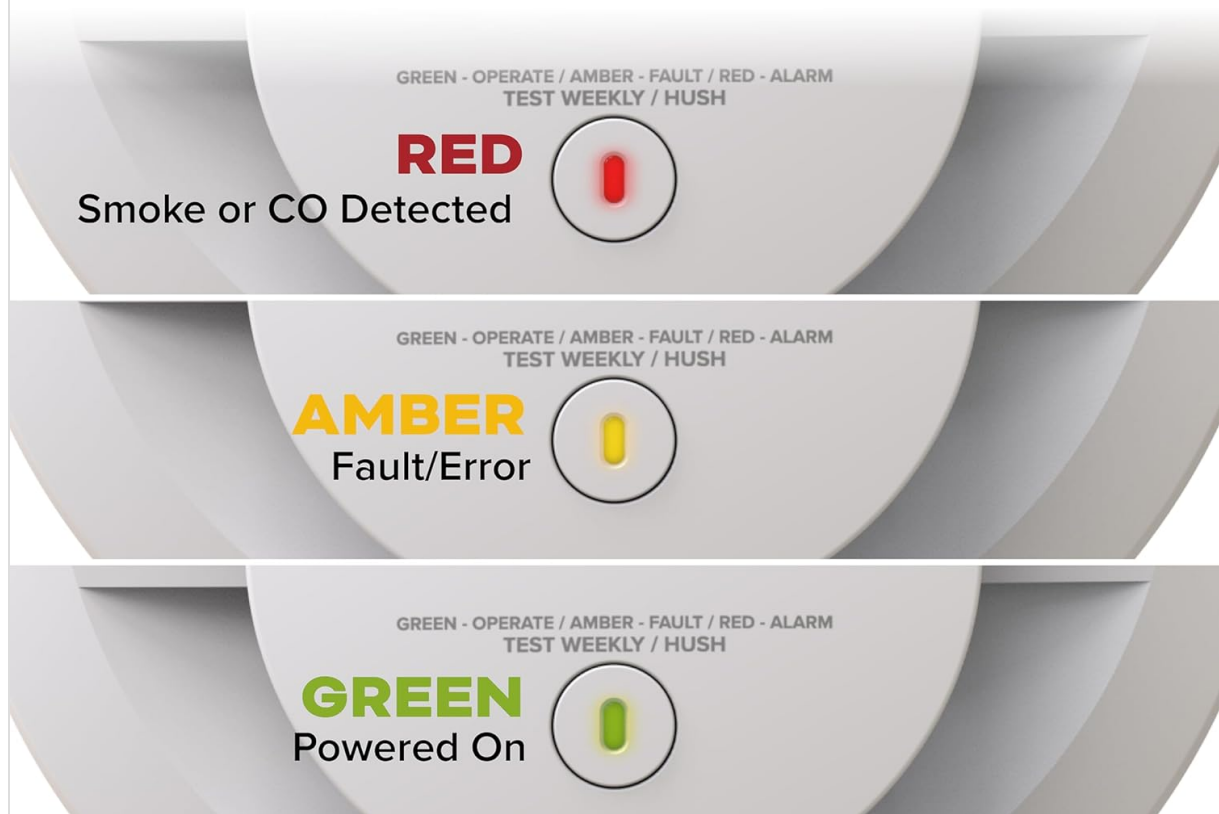


Image Description: A visual guide to the LED notifications on the Kidde 30CUDR detector. It shows three states: a red light indicating smoke or CO detection with an 85-decibel alarm, an amber light indicating a fault or error, and a green light indicating normal operation and power on.

- **Green LED:** Indicates normal operation.
- **Amber LED:** Indicates a fault or error.
- **Red LED:** Indicates smoke or carbon monoxide detection, accompanied by an 85-decibel alarm.

4.2 Self-Testing Feature

The detector includes an internal self-test mechanism that continuously monitors its internal components to ensure proper functionality. This self-test is not a substitute for manual testing.



SELF TESTING**

Ensures alarm is operating as expected.



***Self-testing is not a substitute for a manual push test of the alarm.
Perform a button test once per week to verify proper alarm operation.*

Image Description: A family (two adults, two children, and a dog) relaxing in a living room, with a white Kidde 30CUDR detector mounted on the ceiling. The image visually represents the detector's self-testing capability, ensuring it operates as expected in a home environment.

4.3 Test/Hush Button

The integrated test/hush button allows you to:

- **Test:** Press and hold the button to manually test the alarm's functionality. Perform this test weekly.
- **Hush:** Briefly press the button to temporarily silence nuisance alarms, such as those caused by cooking.



REDUCED NUISANCE ALARMS

**Fewer false alarms often
caused by cooking.**



Image Description: A toaster on a kitchen counter emitting smoke from burnt toast, with a Kidde 30CUDR detector visible in the background. This image highlights the detector's feature of reduced nuisance alarms, particularly from common cooking activities.

5. MAINTENANCE

5.1 Battery Replacement

The batteries in your detector should be replaced approximately every 6 months, or immediately when the low battery warning is indicated. The detector will emit a chirp and the amber LED may flash to signal low battery.

5.2 Cleaning

Clean your detector regularly to prevent dust and debris from interfering with its sensors. Use a soft brush attachment on your vacuum cleaner to gently clean around the vents. Do not use cleaning solvents or spray directly onto the unit.

6. TROUBLESHOOTING

Symptom	Possible Cause	Solution
Alarm chirps periodically	Low battery	Replace batteries immediately.
Amber LED flashes	Fault or error detected	Press the Test/Hush button. If the fault persists, replace the unit.
Nuisance alarm (e.g., during cooking)	Smoke from cooking or steam	Press the Hush button to temporarily silence. Ensure proper ventilation.
Alarm sounds continuously (Red LED)	Smoke or CO detected	Evacuate premises immediately and call emergency services.

7. SPECIFICATIONS

- **Brand:** Kidde
- **Model Number:** 30CUDR
- **Product Dimensions:** 4.78 x 12.7 x 12.7 cm (1.88 x 5 x 5 inches)
- **Weight:** 363 g (0.8 pounds)
- **Color:** White
- **Material:** Plastic
- **Power Source:** Battery Powered (2 x AA Alkaline batteries)
- **Sensor Type:** Photoelectric (Smoke), Electrochemical (CO)
- **Alarm Type:** Smoke and Carbon Monoxide Alarm
- **Operating Humidity:** 10-95% Relative Humidity (non-condensing)
- **Temperature Rating:** Up to 100°F (37.8°C)
- **Compliance:** UL 217 9th Ed., UL 2034 4th Ed., FCC

MODERN 5" DESIGN

Ideal for all
living spaces.

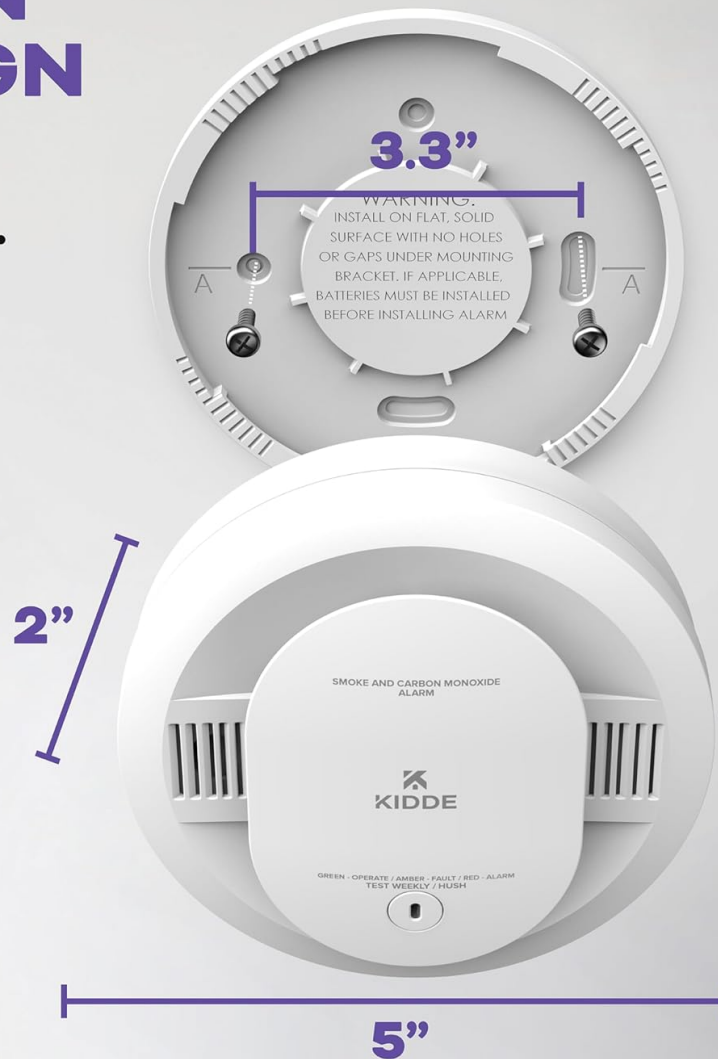


Image Description: A detailed view of the Kidde 30CUDR detector, highlighting its modern 5-inch design. Dimensions are provided, showing a 5-inch diameter, 2-inch depth, and a 3.3-inch mounting bracket diameter. This image emphasizes the compact and suitable design for various living spaces.

8. WARRANTY AND SUPPORT

8.1 Limited 10-Year Warranty

This Kidde combination alarm comes with a 10-year limited warranty. The warranty period begins when power is supplied to the alarm. If the date is unknown, the alarm should be replaced.



Image Description: A family preparing food in a modern kitchen, with a Kidde 30CUDR detector visible on the ceiling. A circular badge overlaid on the image prominently displays "Limited 10 Year Warranty," indicating the product's extended coverage.

8.2 End-of-Life Notification

The alarm is equipped with an end-of-life notification that will chirp to indicate when it is time to replace the unit, typically after 10 years of operation.

8.3 Customer Support

For further assistance, technical support, or warranty claims, please refer to the contact information provided on the product packaging or visit the official Kidde website.