



Manuals.plus /

› eufy Security /

› eufy Security Video Doorbell C30 User Manual

eufy Security

eufy Security Video Doorbell C30 User Manual

Model: T8224

1. INTRODUCTION

The eufy Security Video Doorbell C30 offers advanced home security with crystal-clear 2K FHD video resolution and an expansive 4:3 view, ensuring comprehensive coverage of your front door area. Designed for ease of use, it supports real-time two-way communication, human and motion detection, and flexible power options (battery or wired). All footage is stored locally on a microSD card, eliminating the need for monthly subscription fees. It seamlessly integrates with eufy HomeBase S380 and is compatible with Alexa and Google Assistant for a fully connected smart home experience.



Figure 1: eufy Security Video Doorbell C30 with live video call on smartphone.

2. WHAT'S IN THE BOX

Please ensure all components are present before proceeding with installation:

- eufy Security Video Doorbell C30 (with built-in 5000 mAh battery)
- Mounting Bracket
- 15° Mounting Wedge (for angled installation)
- USB-C Charging Cable
- Mounting Screws and Wall Plugs

- Wiring Connectors (for wired installation)
- Positioning Sticker
- Security Sticker
- Quick Start Guide

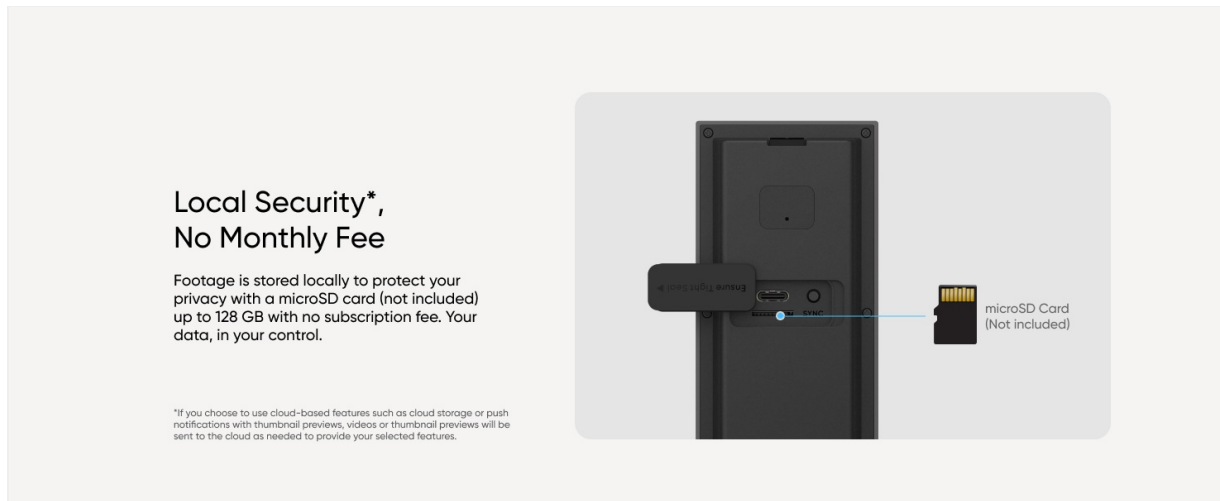


Figure 2: Included components of the Video Doorbell C30.

3. SETUP

3.1 Initial Charging

Before first use, fully charge the doorbell's built-in 5000 mAh battery using the provided USB-C charging cable. The charging port is located on the back of the doorbell unit.

5,000 mAh Capacity



Figure 3: Charging the doorbell battery.

3.2 App Installation and Device Pairing

1. Download the **eufy Security** app from your smartphone's app store.
2. Create an account or log in if you already have one.
3. Follow the in-app instructions to add a new device. Select 'Video Doorbell'.
4. When prompted, press the SYNC button on the doorbell for 2 seconds until you hear a beep and the button begins flashing blue.
5. The app will generate a QR code. Use the doorbell's camera to scan this QR code from your phone screen to connect to your Wi-Fi network.

Video 1: Step-by-step guide on setting up the eufy Video Doorbell.

3.3 Mounting the Doorbell

Choose a location where you can see the desired field of view. If drilling mounting holes, the best height is 4.2 ft (1.2 m) off the ground. Do not drill into wooden material; use screws to mount to the mounting bracket. It's acceptable to drill holes into stucco, brick, or concrete.



Figure 4: Easy wireless installation of the doorbell.

Use the positioning sticker to mark drill points. Secure the mounting bracket to the wall using the provided screws and wall plugs. If desired, attach the 15° mounting wedge to the bracket before securing it to the wall to angle the doorbell for optimal viewing.

4. OPERATING INSTRUCTIONS

4.1 Crystal-Clear 2K FHD Video

The doorbell captures video in 2K FHD, providing detailed and vivid visuals. The 4:3 expanded view offers a wider picture of your entire front door area, enhancing security and ensuring you can see packages left at your doorstep.

See Who's There Clearly with 2K FHD



1080P



2K

Figure 5: Enhanced clarity with 2K FHD resolution.

4.2 Real-Time Communication

When someone rings the doorbell, you will receive a pop-up video call on your phone, allowing you to see and speak to visitors in real-time. If you are unavailable, you can use pre-set quick responses or ask visitors to leave voice memos.

Live Video Call



Figure 6: Live video call feature.

Speak to the Bell with Voice Memo

Set up quick responses and ask visitors to leave messages when no one's home.



Voice Memo



Figure 7: Using voice memos for quick responses.

4.3 Human and Motion Detection

The doorbell features advanced human and motion detection capabilities, sending alerts to your smartphone when activity is detected. You can adjust sensitivity settings within the eufy Security app to minimize unwanted notifications.

4.4 Local Storage and No Monthly Fee

All video recordings are stored locally on a microSD card (up to 128 GB, not included) inserted into the doorbell. This eliminates the need for cloud storage subscriptions, keeping your data private and secure without recurring fees.

Local Security, No Monthly Fee

Up to 128GB expandable local storage.



Figure 8: Local storage, no monthly fees.

5. MAINTENANCE

5.1 Battery Charging

The built-in 5000 mAh battery provides flexible power. When the battery level is low, remove the doorbell from its mounting bracket and charge it using the provided USB-C cable. Battery life can vary based on usage and environmental factors, such as extreme cold.

5.2 microSD Card Management

To insert or remove the microSD card, first detach the doorbell from its mounting bracket. The microSD card slot is located on the back of the unit, protected by a rubber cover. Ensure the card is properly seated

for reliable local storage.

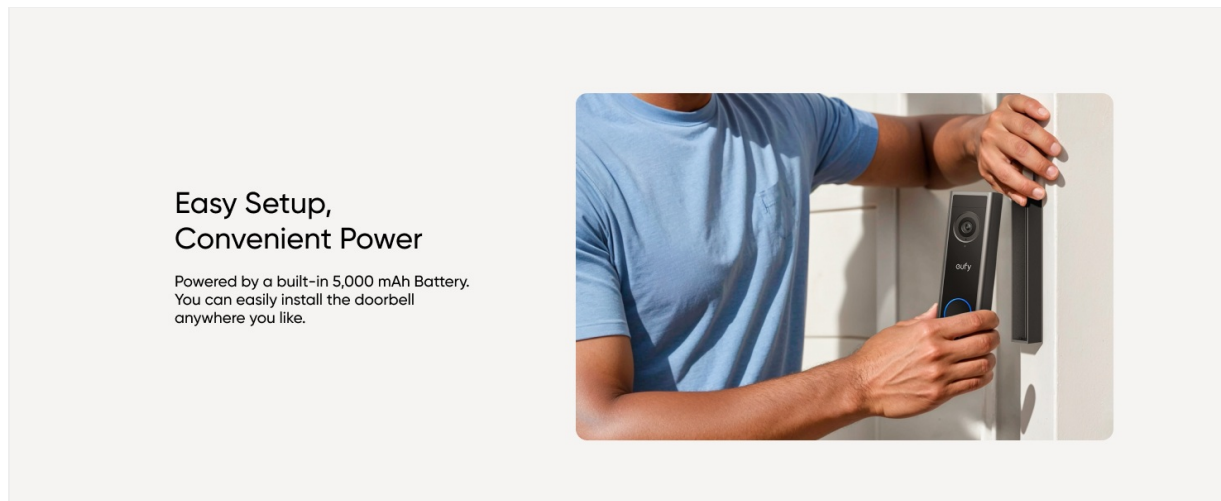


Figure 9: MicroSD card slot and charging port location.

5.3 General Care

Regularly wipe the camera lens and the doorbell's exterior with a soft, damp cloth to ensure clear video quality and maintain its appearance. Avoid using harsh chemicals or abrasive materials.

6. TROUBLESHOOTING

6.1 Connectivity Issues

If the doorbell struggles to connect to Wi-Fi or maintain a stable connection, ensure your Wi-Fi router is within range and that the doorbell is scanning the correct QR code during setup. Restarting both the doorbell and your router can often resolve temporary network glitches.

6.2 Battery Life Concerns

Battery performance can be affected by frequent motion detections, live view access, and cold temperatures. If battery life is shorter than expected, consider reducing motion detection sensitivity, optimizing detection zones, or opting for a wired installation for continuous power.

6.3 MicroSD Card Not Recognized

If the doorbell displays a "SD card not installed" message, ensure the microSD card is correctly inserted into its slot. Try removing and reinserting the card. If the issue persists, try formatting the card on a computer or using a different compatible microSD card.

6.4 Excessive Notifications

If you are receiving too many motion detection notifications, adjust the motion detection sensitivity and customize activity zones within the eufy Security app. This helps focus detection on relevant areas and reduces false alerts.

7. SPECIFICATIONS

Feature	Detail
Model Name	T8224
Video Capture Resolution	2K FHD
Power Source	Battery Powered (Built-in 5000 mAh) / Wired
Connectivity Protocol	Wi-Fi
Local Storage	MicroSD card up to 128 GB (not included)
Indoor/Outdoor Usage	Outdoor
Mounting Type	Wall Mount
Item Dimensions (L x W x H)	6.2 x 4.57 x 1.75 inches
Item Weight	12.7 ounces
UPC	194644210892

8. WARRANTY AND SUPPORT

For warranty information, technical support, or any product-related inquiries, please visit the official eufy Security website or contact their customer service directly. Keep your purchase receipt for warranty claims.