

## Insta360 CINSABNB

# Insta360 Link 2 User Manual

Brand: Insta360  
Model: CINSABNB

## INTRODUCTION

This manual provides comprehensive instructions for setting up, operating, maintaining, and troubleshooting your Insta360 Link 2 PTZ 4K Webcam. Designed for streaming, video calls, and gaming, the Insta360 Link 2 features a 1/2" sensor, AI tracking, HDR, AI noise-canceling microphone, and gesture control to enhance your communication experience.

## WHAT'S IN THE BOX

- 1 x Insta360 Link 2 Webcam
- 1 x Magnetic Mount
- 4 x Recognition Markers
- 1 x USB-C Cable
- 1 x USB-C to A Adapter

## SETUP

To begin using your Insta360 Link 2, connect the webcam to your computer using the provided USB-C cable. If your computer does not have a USB-C port, use the included USB-C to A adapter. The webcam is designed for plug-and-play functionality with most systems.

For optimal performance and access to advanced features, download and install the dedicated Link Controller software from the official Insta360 website. The software is compatible with Windows 10 or later (excluding ARM-based Windows) and macOS 10.13 or later. Note that Virtual Camera features require macOS 13.0 or later.

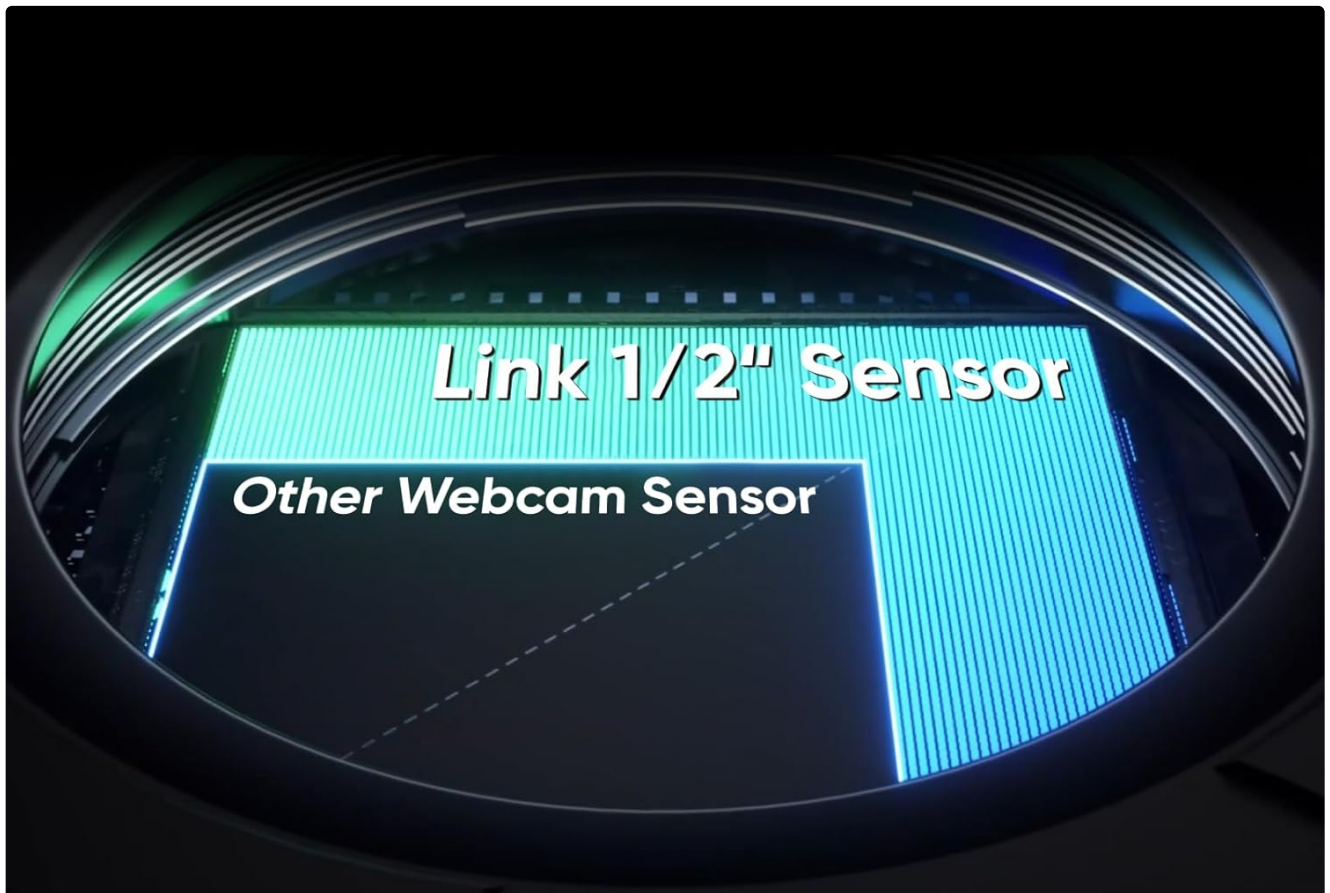


Figure 1: Insta360 Link 2 Webcam connected to a laptop.

## OPERATING INSTRUCTIONS

### Premium Image Quality

The Insta360 Link 2 captures stunning visuals with its impressive 1/2" sensor, delivering balanced and true-to-life 4K resolution. Its HDR capabilities ensure exceptional performance even in low-light conditions, providing clear and vibrant video quality.



## Professional 4K Image Quality

Capture balanced, lifelike images with a large 1/2" sensor, 4K resolution and advanced HDR.

Figure 2: The large 1/2" sensor of the Insta360 Link 2 captures more light and detail compared to smaller sensors.



# AI Tracking

Move freely, stay in frame wherever you move.

Figure 3: HDR technology provides balanced images in both low light and high-contrast environments.

## Professional Audio

Experience clear communication with the Insta360 Link 2's advanced AI noise-canceling algorithms. These algorithms effectively filter out unwanted background noise, ensuring your voice is heard distinctly even in busy environments. The webcam offers three customizable audio modes: Voice Focus, Voice Suppression, and Music Balance.





# Industry-Leading Audio

Unrivaled audio with advanced noise-canceling AI to filter out unwanted background noise.

Figure 4: AI noise-canceling technology ensures distraction-free communication.

## True Focus (PDAF)

Maintain sharp and crisp video with the faster, more accurate Phase Detection Auto Focus (PDAF) system. This technology ensures quick focusing, eliminating blurry shots and keeping you clearly in frame.



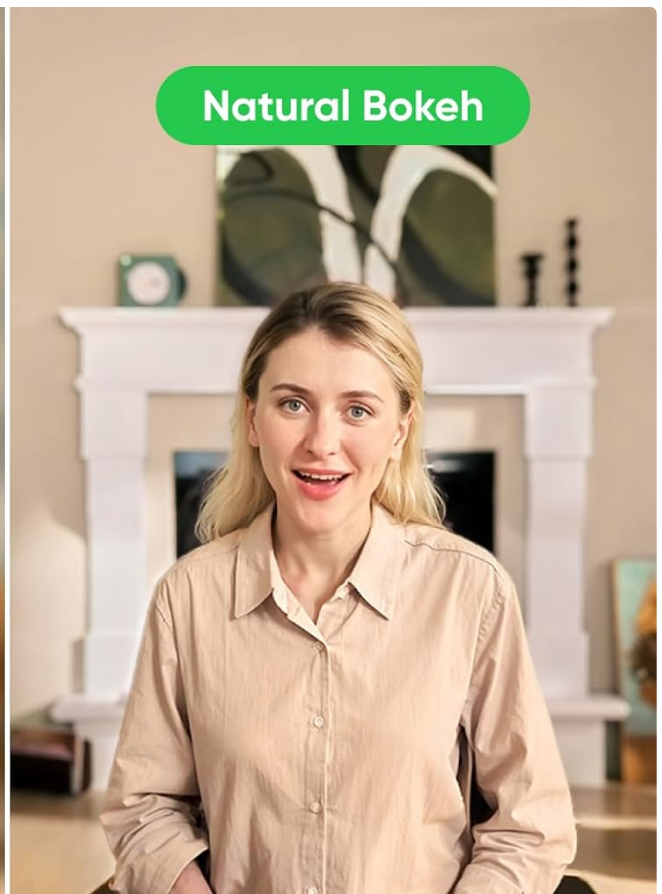
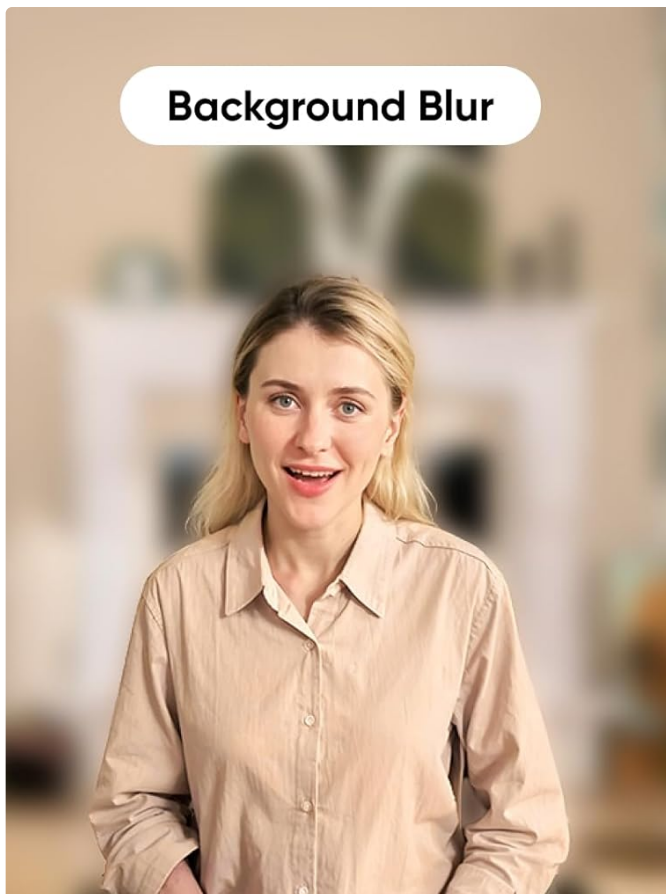
# Gesture Control

Use simple hand gestures to control the webcam.

Figure 5: The Insta360 Link 2 maintains sharp focus with PDAF technology.

## Natural Bokeh

Achieve a professional aesthetic with a realistic and natural bokeh effect, replicating the depth of field typically seen in DSLR cameras. This feature is accessible directly from the Link Controller software.



## Natural Bokeh

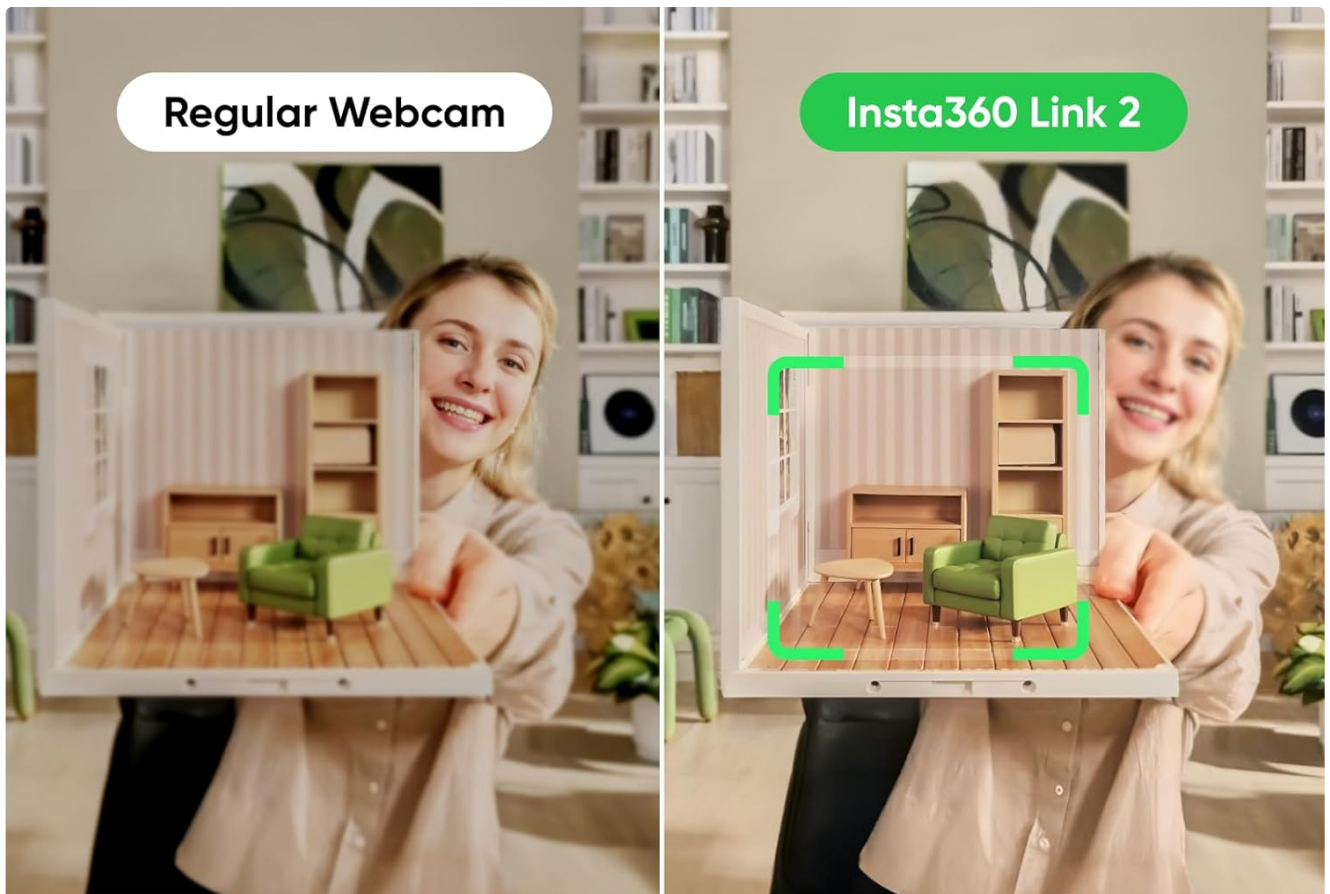
Get a professional look with Natural Bokeh or effortless privacy with Background Blur.

Figure 6: Natural bokeh provides a professional look, while background blur offers privacy.

### AI Tracking

The Insta360 Link 2 utilizes a 2-axis gimbal that physically pans and tilts to follow your movements, ensuring you or your group remain perfectly in frame. This AI tracking feature allows for free movement during presentations or calls.





# True Focus

Stay sharp with faster Phase Detection  
Auto Focus (PDAF).

Figure 7: AI tracking keeps you in frame whether you are alone or in a group.

## Gesture Control

Control your webcam effortlessly using simple hand gestures. Gestures can be used to activate AI Tracking/Auto Framing, zoom in or out, and enable Whiteboard Mode, providing convenient remote operation.





# Advanced Desktop Software

Customize settings, access specialized modes, and control your whole look with the Insta360 Link Controller software.

Figure 8: Use hand gestures to control AI tracking, zoom, and whiteboard mode.

## Advanced Desktop Software (Link Controller)

The free dedicated Link Controller software allows you to fine-tune settings, access advanced features, and personalize your webcam experience. This includes color grading, exposure, temperature adjustments, and more.

## Crystal clear video, every time.

Look your best in every video meeting, family call or live stream, thanks to **Ultra HD 4K resolution**.

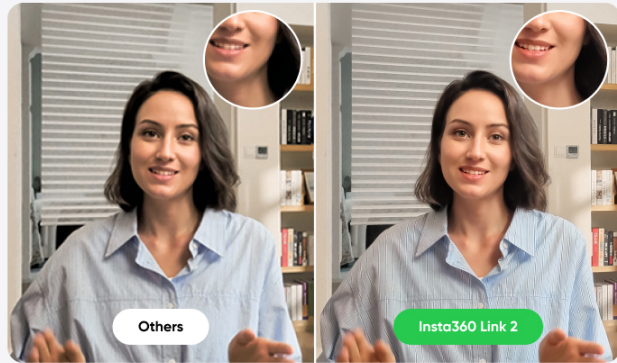


Figure 9: The Link Controller software provides comprehensive control over your webcam settings.

### Specialized Modes

Adapt to various scenarios with versatile modes such as DeskView, Whiteboard, and 4K Portrait Mode. DeskView automatically tilts down to capture a top-down view of your desk, ideal for showing sketches or documents. Whiteboard mode optimizes content for clarity and corrects perspective.

### Privacy Mode

For enhanced privacy, the Insta360 Link 2 automatically tilts down after 10 seconds of inactivity. You can also manually adjust the camera to face downwards at any time.

### Universal Compatibility

The webcam is fully compatible with all major video conferencing software and live streaming platforms, including Microsoft Teams, Zoom, and Twitch, ensuring a seamless experience across different applications.

## MAINTENANCE

To ensure the longevity and optimal performance of your Insta360 Link 2 webcam, follow these maintenance guidelines:

- **Cleaning:** Use a soft, dry cloth to clean the camera lens and body. Avoid using harsh chemicals or abrasive materials that could scratch the surfaces.
- **Storage:** When not in use, store the webcam in a cool, dry place away from direct sunlight and extreme temperatures.
- **Cable Care:** Handle the USB cable and adapter gently. Avoid bending or twisting them excessively to prevent damage.
- **Firmware Updates:** Regularly check for and install firmware updates via the Link Controller software to benefit from performance improvements and new features.

# TROUBLESHOOTING

If you encounter issues with your Insta360 Link 2, refer to the following common troubleshooting steps:

Problem	Possible Cause	Solution
Webcam not recognized	Loose USB connection, incompatible port, driver issue.	Ensure the USB cable is securely connected. Try a different USB port or adapter. Restart your computer. Check device manager for driver status.
Poor image quality	Insufficient lighting, dirty lens, incorrect software settings.	Ensure adequate lighting. Clean the lens with a soft cloth. Adjust settings (exposure, white balance, HDR) in Link Controller.
AI Tracking not working	Feature disabled, poor lighting, obstruction, software glitch.	Ensure AI Tracking is enabled in Link Controller. Ensure you are well-lit and visible to the camera. Update webcam firmware.
Audio issues (noise, no sound)	Microphone disabled, background noise, incorrect audio settings.	Check microphone settings in your operating system and conferencing software. Adjust noise-canceling settings in Link Controller. Ensure no physical obstructions to the microphone.
Software (Link Controller) issues on macOS	Specific macOS security settings.	Ensure "camera extensions" are activated in your macOS settings. Refer to Insta360's official support for detailed macOS compatibility and setup guides.

# SPECIFICATIONS

Feature	Detail
Brand	Insta360
Model Number	CINSABNB
Max Screen Resolution	4K
Rear Webcam Resolution	48 MP
Photo Sensor Technology	CMOS
Video Capture Resolution	4K
Connectivity Technology	USB

Feature	Detail
Item Weight	15 ounces
Product Dimensions (LxWxH)	6.77 x 3.94 x 2.64 inches

## WARRANTY AND SUPPORT

For detailed warranty information, product registration, and technical support, please visit the official Insta360 website. You can find FAQs, software downloads, and contact information for customer service there. Keep your proof of purchase for warranty claims.