

OIMYE B0DDTCMYKD

OIMYE Professional High-Speed Ionic Hair Dryer User Manual

Model: B0DDTCMYKD

1. INTRODUCTION

Thank you for choosing the OIMYE Professional High-Speed Ionic Hair Dryer. This manual provides essential information for the safe and effective use of your new hair dryer. Designed for rapid drying and hair care, this device incorporates a 160,000 RPM brushless motor, intelligent heat control, and negative ion technology to deliver efficient and healthy hair drying results.

This hair dryer is equipped with a powerful 1500W motor, providing a strong airflow of 36 m/s for quick drying. The advanced ionic care technology releases up to 500 million negative ions to help seal hair cuticles, lock in moisture, and reduce frizz, resulting in shinier and smoother hair. The intelligent heat control system monitors air temperature over 110 times per second to prevent heat damage, indicated by a color-changing ring light. Its lightweight design (0.9 lbs/407 grams) and low noise operation (below 51 decibels) ensure comfortable use. Two magnetic attachments, a concentrator nozzle and a diffuser, are included for versatile styling.

2. SAFETY INFORMATION

WARNING: To reduce the risk of electric shock, fire, or injury, please read all instructions before using this appliance.

- Keep out of reach of children.
- Do not use this appliance near water, such as in a bathtub, shower, or sink.
- Avoid using the hair dryer near flammable materials or aerosols.
- Always unplug the appliance immediately after use.
- Do not operate any appliance with a damaged cord or plug. If the appliance is not working properly, has been dropped or damaged, or dropped into water, return it to a service center for examination and repair.

- Do not block the air openings or place the appliance on a soft surface, such as a bed or couch, where the air openings may be blocked.
- The hair dryer adopts the standard UL-certified American ALCI safety plug to provide better protection. Do not attempt to bypass or modify this safety feature.

3. PACKAGE CONTENTS

- OIMYE Professional High-Speed Ionic Hair Dryer
- Magnetic Concentrator Nozzle
- Magnetic Diffuser
- User Manual

4. PRODUCT FEATURES

- **High-Speed Brushless Motor:** 160,000 RPM motor for powerful and fast drying.
- **Advanced Ionic Care:** Emits up to 500 million negative ions to reduce frizz, enhance shine, and smooth hair.
- **Intelligent Heat Control:** Monitors air temperature over 110 times per second to prevent heat damage.
- **Color-Changing Indicator:** Ring light displays current heat setting (Green: Cold, Orange: Warm, Red: Hot, Cycling: Alternating).
- **Low Noise Design:** Equipped with 8 layers of damping noise reduction technology, operating below 51 decibels.
- **Lightweight and Portable:** Weighs only 0.9 lbs (407 grams) for comfortable handling and travel.
- **Magnetic Attachments:** Includes a 360° rotating magnetic concentrator nozzle and diffuser for easy attachment and versatile styling.
- **Fine Filter:** 0.2mm ultra-dense filter prevents hair from being sucked in and is easy to clean.

5. SETUP

1. **Unpack:** Carefully remove all components from the packaging.
2. **Attach Nozzle/Diffuser:** Select the desired magnetic attachment (concentrator nozzle for precise drying/styling or diffuser for curly hair) and simply bring it close to the front of the hair dryer. The magnetic connection will secure it in place.
3. **Plug In:** Insert the power plug into a suitable electrical outlet. Ensure the voltage matches the specifications of the hair dryer.

6. OPERATING INSTRUCTIONS

Power On/Off and Speed Settings

- Locate the power switch on the handle.
- Slide the switch to the 'ON' position to turn on the hair dryer.
- The hair dryer typically has multiple speed settings. Adjust the speed using the designated button on the handle.

Temperature Control

The OIMYE hair dryer features intelligent temperature control with a color-changing indicator ring:

- **Green Light:** Cold Air (for setting styles and reducing frizz).
- **Orange Light:** Warm Air (for gentle drying).
- **Red Light:** Hot Air (for rapid drying).
- **Cycling Mode:** Press and hold the temperature button for 2 seconds to activate the cycling mode, which alternates between cold, warm, and hot air to prevent overheating a single section of hair.

Adjust the temperature by pressing the temperature control button on the handle until the desired color light is displayed.

Drying Tips

- For best results, gently towel dry your hair first to remove excess moisture.
- Use the concentrator nozzle for targeted drying and styling.
- Use the diffuser for enhancing natural curls and waves, holding it close to the scalp.
- Avoid over-drying your hair. Dry until it's about 80% dry, then switch to a cool setting to lock in shine.



Image: Internal components and airflow for fast drying, with estimated drying times for short (1-2 mins), medium (2-3 mins), and long hair (3-5 mins).

A woman is shown from the chest up, holding the black OIMYE hair dryer. Overlaid on the image is a white banner with the text "PROFESSIONAL SALON HAIR DRYER" and a list of six features, each with an icon and text.

PROFESSIONAL SALON HAIR DRYER

- 500 Million Negative Ions
No Heat Damage
- 160000 RPM
High-Speed Motor
- 36m/s
Wind Speed
- Low Noise
Technology
- 360° Magnetic
Nozzle/Diffuser
- 0.89 lbs
Lightweight

Image: Visual comparison demonstrating the benefits of advanced ionic care, showing hair that is 35% shinier, 40% smoother, and 60% less frizzy after using the OIMYE Ionic Hair Dryer.

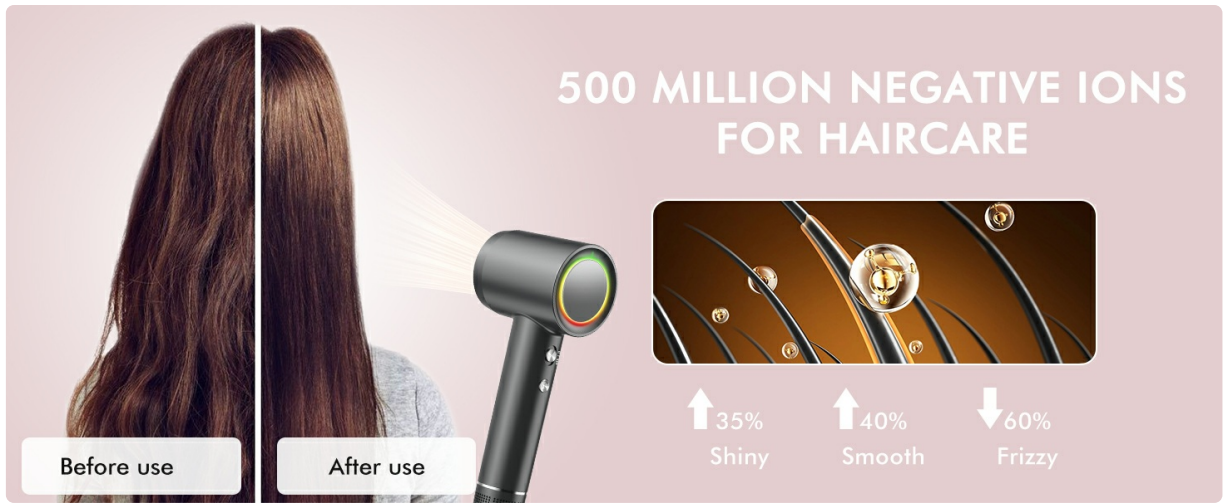


Image: The intelligent temperature control system with color LED indicators: Green for Cold, Orange for Warm, Red for Hot, and a cycling mode (long press) that rotates through temperatures to prevent heat damage.



Image: The magnetic concentrator nozzle and diffuser attachments, which are easy to attach and detach, allowing for customized hairstyles.



Image: Demonstrates the lightweight (0.89 lbs) and low noise (51 dB) design, making it quiet and easy to handle, even without disturbing others.

Your browser does not support the video tag.

Video: An official OIMYE video showcasing the features of the Professional High-Speed Ionic Hair Dryer, including its powerful brushless motor, intelligent temperature control, negative ion technology, and magnetic attachments.

7. MAINTENANCE

Cleaning the Air Filter

Regular cleaning of the air filter is crucial for maintaining optimal performance and extending the life of your hair dryer. The OIMYE hair dryer features a 0.2mm fine filter designed to prevent hair and dust from being sucked in.

1. **Unplug:** Always ensure the hair dryer is unplugged from the power outlet before cleaning.
2. **Detach Filter:** The filter is located at the bottom of the handle. Gently twist or pull to detach the filter cover.
3. **Clean:** Use a soft brush or a dry cloth to remove any accumulated dust, lint, or hair from the filter screen. Do not use water or harsh chemicals.
4. **Reattach:** Once clean, securely reattach the filter cover.

Note: A clogged filter can lead to overheating and reduced airflow, impacting drying efficiency and potentially damaging the motor.

8. TROUBLESHOOTING

Common Issues and Solutions

Problem	Possible Cause	Solution
Hair dryer does not turn on.	No power supply; Damaged cord/plug; ALCI safety plug tripped.	Check power outlet. Inspect cord/plug for damage. Press the 'RESET' button on the ALCI safety plug.
Low airflow or overheating.	Clogged air filter.	Clean the air filter as described in the Maintenance section.
Hair dryer stops unexpectedly.	Overheating protection activated.	Unplug the hair dryer and allow it to cool down for several minutes. Clean the air filter.
Hair is still frizzy after drying.	Not utilizing ionic function effectively; Over-drying.	Ensure the hair dryer is operating correctly. Avoid over-drying; use the cool shot function to seal cuticles.

If you encounter issues not listed here or if the problem persists after attempting the solutions, please contact OIMYE customer support.



Pet-Friendly
No high-pitched
or piercing sounds

Image: FAQs addressing the hair dryer's 1500W wattage and tips for faster, healthier drying, including towel drying first, using heat protectants, and avoiding over-drying.

9. SPECIFICATIONS

- **Brand:** OIMYE
- **Model:** B0DDTCMYKD
- **Motor Speed:** 160,000 RPM
- **Power:** 1500 Watts
- **Airflow Speed:** 36 m/s
- **Negative Ion Output:** Up to 500 Million
- **Noise Level:** Below 51 dB
- **Weight:** 0.9 lbs (407 grams)
- **Product Dimensions:** 10.87 x 3.54 x 2.8 inches
- **Material:** Metal
- **Color:** Black
- **Power Source:** Corded Electric
- **Safety Certification:** UL-certified American ALCI safety plug

10. WARRANTY AND SUPPORT

OIMYE is committed to providing high-quality products and customer satisfaction.

- **Return Policy:** This product is eligible for a 30-day refund/replacement policy.
- **Protection Plans:** Optional 2-Year and 3-Year Protection Plans are available for purchase to extend coverage.
- **Customer Service:** For any questions, concerns, or support needs, please contact OIMYE customer service. Refer to your purchase documentation for specific contact details.

FAQs

What is the wattage of this hair dryer?

It's 1500W, equipped with a high-speed motor that delivers an impressive 36m/s wind speed.

It's actually more efficient than many traditional 2000W dryers, thanks to its advanced technology—and it's much quieter, too.

How to dry your hair faster and healthier?

Towel Dry First

Gently towel-dry your hair to remove excess moisture before using a blow dryer. This reduces drying time and minimizes heat damage.

Use Heat Protectant Sprays and Oils

Before blow-drying or styling your hair, apply a heat protectant spray or a small amount of hair oil. This reduces heat damage and keeping your locks smooth and shiny.

Don't Over-Dry

Dry your hair until it's about 80% dry, then switch to a cool setting to lock in shine and reduce heat damage.

Image: OIMYE customer support details, highlighting a 60-day money-back service and a 2-year easy exchange policy for defective items.