



Manuals.plus /

› WAINLUXPRO /

› WAINLUX MD1920 Laser Rotary Attachment Instruction Manual

WAINLUXPRO MD1920

WAINLUX MD1920 Laser Rotary Attachment Instruction Manual

Model: MD1920 | Brand: WAINLUXPRO

Introduction	Components	Setup	Operating Instructions	Maintenance	Troubleshooting
		Specifications	Warranty & Support		

1. INTRODUCTION

The WAINLUX MD1920 Laser Rotary Attachment is an essential accessory designed to expand the capabilities of your laser engraver, enabling precise engraving on cylindrical and irregularly shaped objects. This attachment allows for 360-degree rotation, making it ideal for personalizing items such as wine glasses, tumblers, pens, and more.

- **Versatile Engraving:** Designed for everyday use on cylinder-shaped objects, including wine glasses, shot glasses, and baseball bats, allowing for creative customization.
- **Wide Compatibility:** The MD1920 is compatible with WAINLUX K10 and X1 laser engravers. Its adjustable height feature ensures suitability for various engraving needs, and the K10 engraver can be raised for ease of use with the rollers.
- **Durable Construction:** Manufactured from anodized aluminum alloy with a corrosion-resistant coating, ensuring long-term reliability and durability.
- **User-Friendly Design:** Features a pre-assembled and modular design for plug-and-play functionality with your existing laser cutting machine.



Figure 1.1: The WAINLUX MD1920 Rotary Attachment shown with examples of cylindrical objects it can engrave, including a wine bottle, tumblers, and glasses.

2. COMPONENTS

The WAINLUX MD1920 Rotary Attachment consists of two primary components and a connecting cable:

- **Main Rotary Unit:** This unit features two rollers that rotate the object during engraving. It houses the motor and connection port.
- **Adjustable Support Unit:** This separate unit provides stable support for the other end of the cylindrical object, ensuring it remains level and secure during rotation. It is adjustable to accommodate various object lengths and diameters.
- **USB Connection Cable:** Used to connect the rotary attachment to your laser engraver for power and control.

Perfectly Adapted

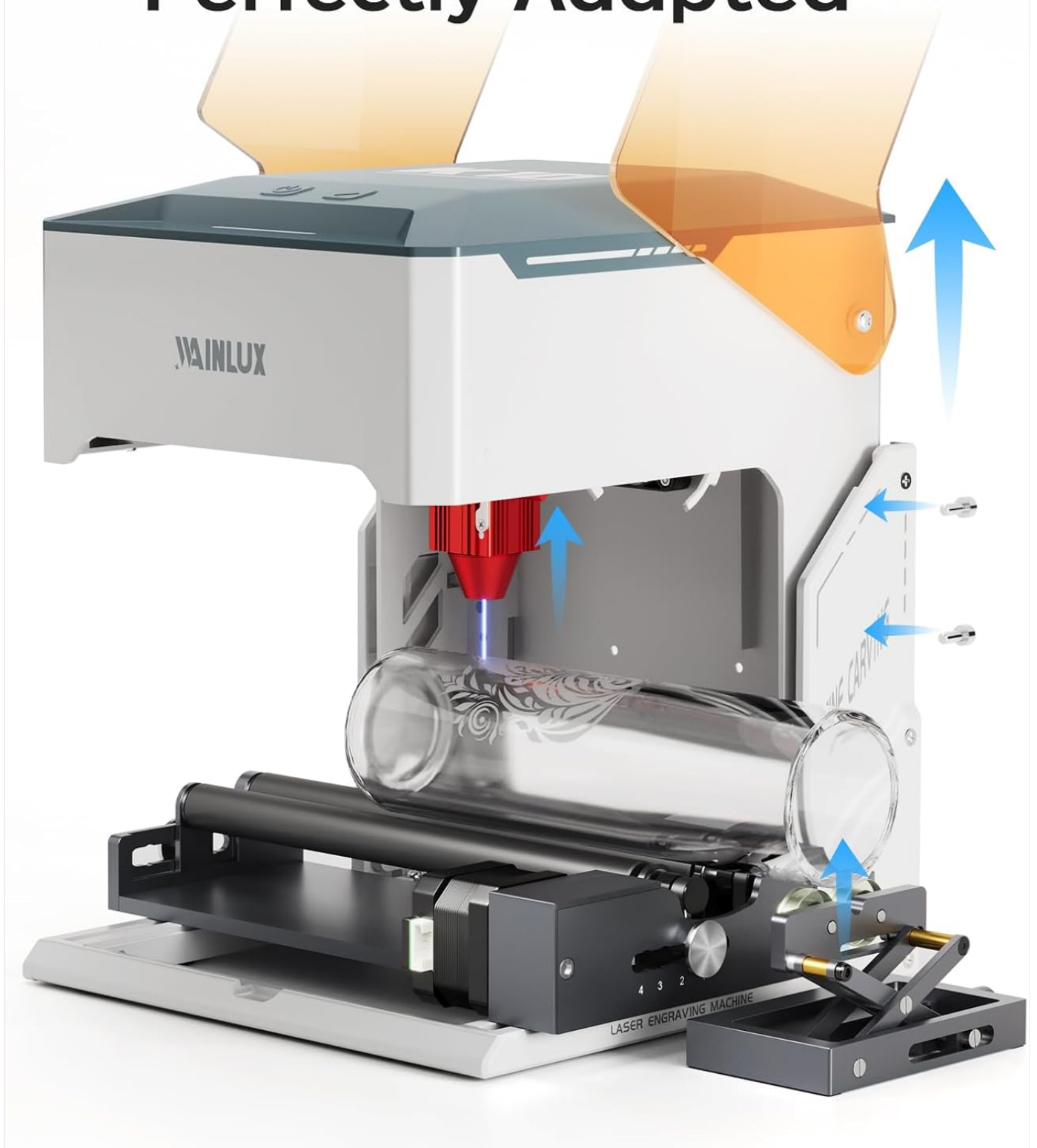


Figure 2.1: Overview of the WAINLUX MD1920 components, including the main rotary unit, adjustable support, and connecting cable.

Easy to use

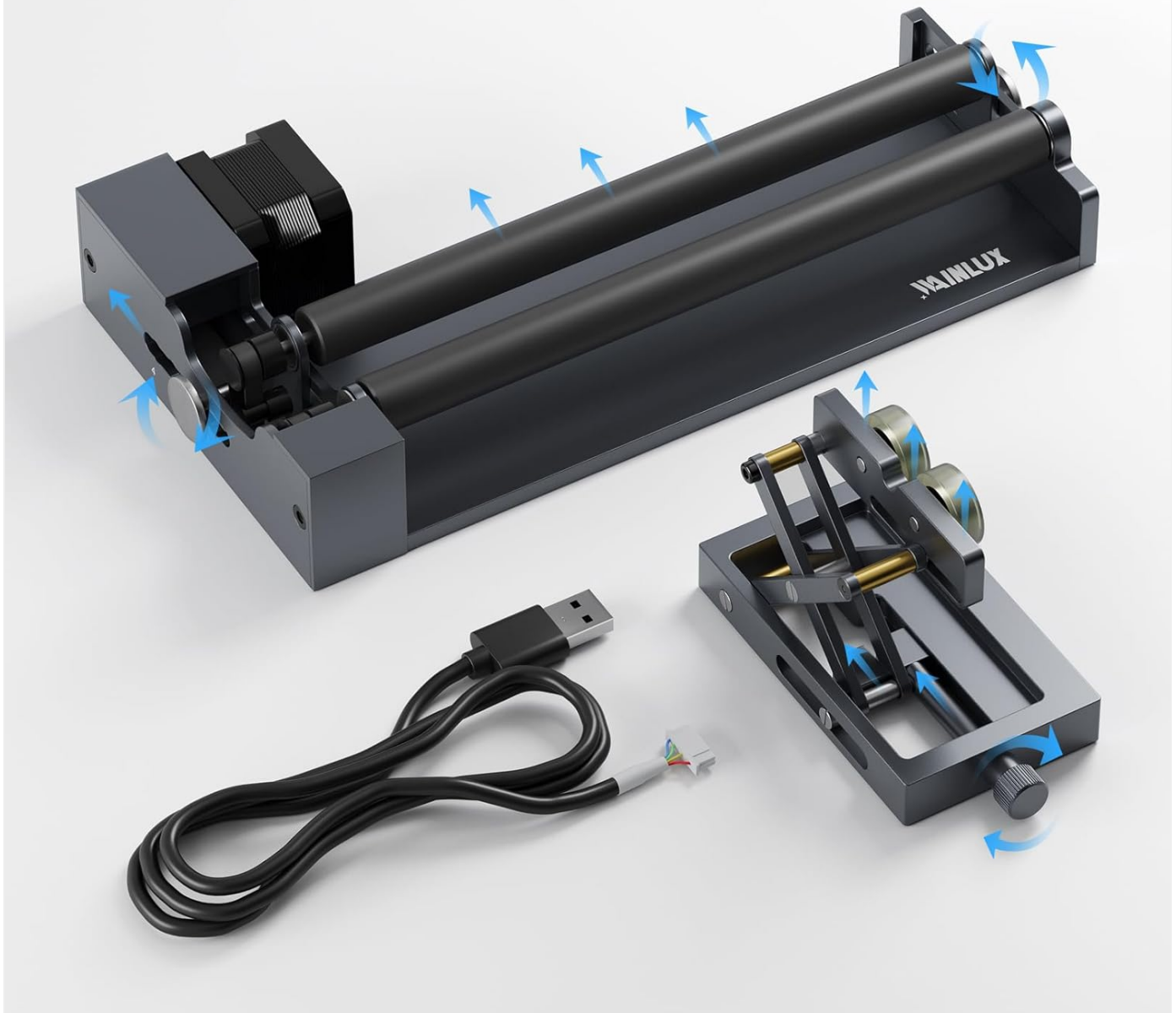


Figure 2.2: The main rotary unit, highlighting its simple and adjustable design for various cylindrical objects.

3. SETUP

The WAINLUX MD1920 is designed for quick and easy setup, featuring a plug-and-play modular design. Follow these steps to integrate it with your compatible laser engraver:

1. **Placement:** Position the main rotary unit and the adjustable support unit within the engraving area of your laser engraver. Ensure they are aligned to securely hold the cylindrical object.
2. **Connection:** Connect the USB cable from the main rotary unit to the designated port on your WAINLUX K10 or X1 laser engraver.
3. **Object Loading:** Carefully place the cylindrical object (e.g., wine glass, tumbler) onto the rollers of the main rotary unit and adjust the support unit to firmly hold the other end. Ensure the object is level and stable.
4. **Height Adjustment (if necessary):** For optimal engraving, you may need to adjust the height of your laser engraver or the rotary attachment itself. The K10 engraver can be raised to accommodate the rotary setup.

5. **Software Configuration:** Refer to your laser engraver's software manual for specific settings related to rotary engraving. This typically involves enabling rotary mode and inputting the object's diameter.

Can be adapted to K10 Engraving Machine

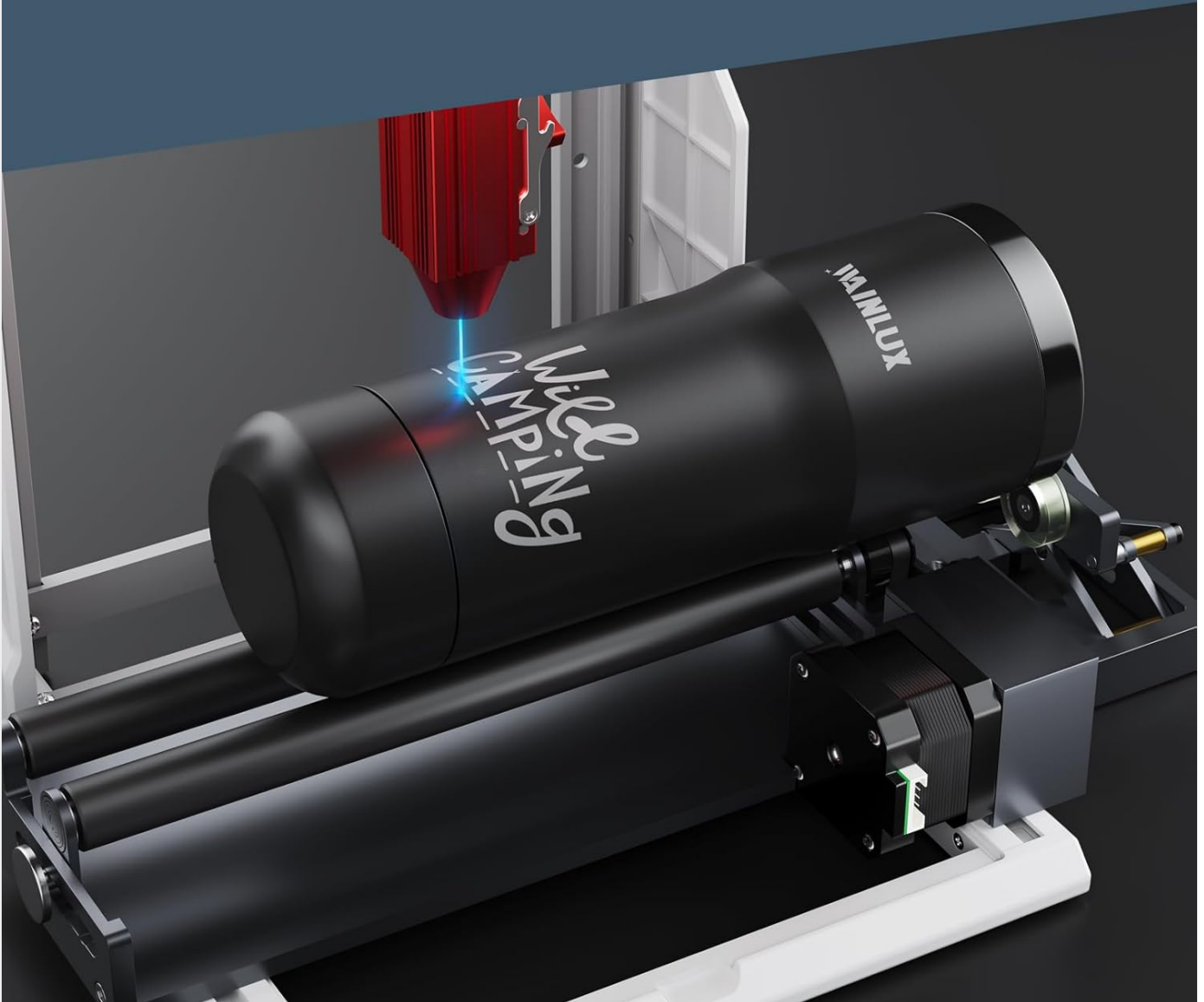


Figure 3.1: Illustration demonstrating the perfect adaptation of the MD1920 to the K10 engraving machine, indicating proper alignment and fit.

4. OPERATING INSTRUCTIONS

Once the MD1920 Rotary Attachment is set up and your object is securely mounted, you can begin the engraving process. The key advantage of this attachment is its ability to perform 360-degree rotary engraving on various cylindrical items.

4.1 Preparing for Engraving

- Ensure the object is clean and free of debris.
- Measure the diameter of your object accurately, as this will be required for software settings.
- Design your engraving pattern in your laser engraver's software.

- Activate the rotary engraving mode within your software and input the object's dimensions.

4.2 Engraving Process

1. Initiate the engraving job from your laser engraver's software.
2. The rotary attachment will begin to rotate the object while the laser engraves the design onto its surface.
3. Monitor the engraving process to ensure proper alignment and quality.
4. Once complete, carefully remove the engraved object from the rotary attachment.



Figure 4.1: The MD1920 enabling 360-degree rotary engraving on a cylindrical object, ensuring consistent results around the entire surface.

Note: No official product videos with "creator_type": "Seller" were provided in the product data. If available, relevant videos demonstrating the operating process would be embedded here.

5. MAINTENANCE

Proper maintenance ensures the longevity and optimal performance of your WAINLUX MD1920 Rotary Attachment. While the device is built with durable materials, regular care is recommended.

- **Cleaning:** After each use, gently wipe down the rollers and the body of the attachment with a soft, dry cloth to remove any dust or debris from the engraving process. Avoid using abrasive cleaners or solvents.
- **Inspection:** Periodically inspect the rollers and moving parts for any signs of wear or damage. Ensure the rollers spin freely and smoothly.
- **Storage:** When not in use, store the rotary attachment in a clean, dry environment, away from direct sunlight and extreme temperatures.
- **Cable Care:** Ensure the USB connection cable is not kinked or damaged. Store it neatly to prevent wear.

The anodized aluminum alloy with corrosion-resistant coating contributes to the device's durability, minimizing the need for extensive maintenance.

6. TROUBLESHOOTING

If you encounter issues while using your WAINLUX MD1920 Rotary Attachment, refer to the common problems and solutions below. For more complex issues, please contact customer support.

Problem	Possible Cause	Solution
Rotary attachment not responding/not rotating.	<ul style="list-style-type: none">• Loose or disconnected USB cable.• Incorrect software settings.• Power issue with the engraver.	<ul style="list-style-type: none">• Ensure the USB cable is securely connected to both the rotary attachment and the engraver.• Verify that rotary mode is enabled in your laser engraver's software and all parameters are correctly set.• Check if your laser engraver is powered on and functioning correctly.
Engraving is distorted or misaligned.	<ul style="list-style-type: none">• Object not securely mounted.• Incorrect object diameter in software.• Rollers are dirty or obstructed.	<ul style="list-style-type: none">• Ensure the cylindrical object is firmly seated on the rollers and the adjustable support unit.• Double-check the object's diameter entered into the engraving software.• Clean the rollers to ensure smooth rotation.
Attachment does not fit under the laser head.	<ul style="list-style-type: none">• Engraver height not adjusted.• Object too large for the engraver's working area.	<ul style="list-style-type: none">• Adjust the height of your WAINLUX K10 or X1 engraver as described in its manual to accommodate the rotary attachment and object.• Ensure the object's dimensions are within the maximum capacity of your engraver with the rotary attachment.

7. SPECIFICATIONS

Key technical specifications for the WAINLUX MD1920 Laser Rotary Attachment:

Model Number	MD1920
Product Dimensions	3 x 1.25 x 10 inches
Item Weight	0.317 ounces
Manufacturer	WAINLUXPRO
Material	Anodized Aluminum Alloy with Corrosion-Resistant Coating
Compatibility	WAINLUX K10, WAINLUX X1 Laser Engravers
First Available Date	August 21, 2024

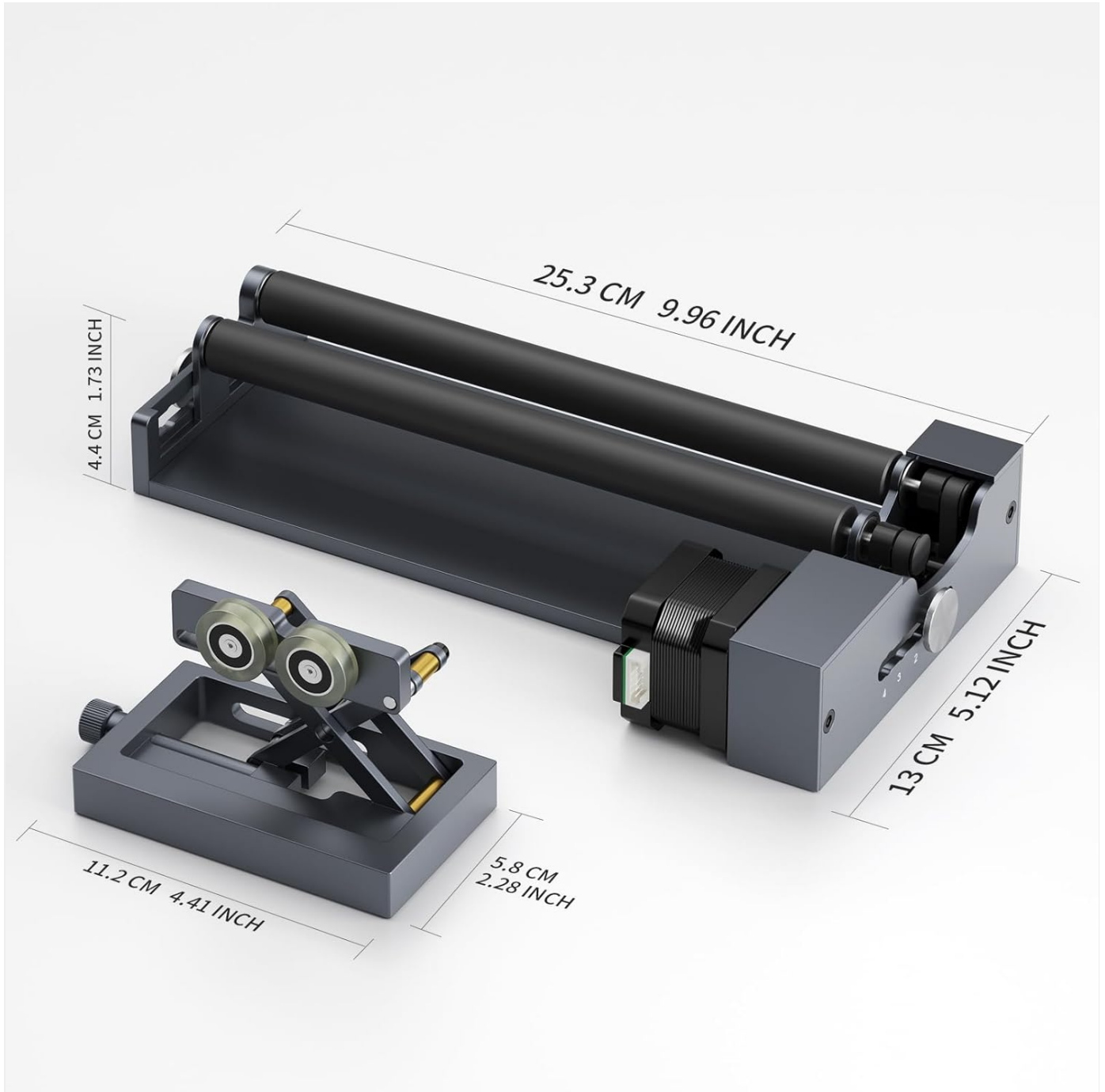


Figure 7.1: Detailed dimensions of the WAINLUX MD1920 Rotary Attachment for reference.

8. WARRANTY & SUPPORT

WAINLUXPRO is committed to providing high-quality products and excellent customer service.

8.1 Customer Support

For any questions, technical assistance, or troubleshooting beyond this manual, WAINLUX provides friendly customer service and professional technical support. Please refer to the contact information provided with your product packaging or visit the official WAINLUXPRO website for support options.

8.2 Return Policy

This product is subject to a return policy that allows for a refund or replacement within 30 days of purchase. Please refer to the retailer's specific return policy for detailed terms and conditions.

