



Manuals.plus /

› CINAMON /

› CINAMON WiFi Extender (Model B0DDQLRDJF) Instruction Manual

CINAMON B0DDQLRDJF

CINAMON WiFi Extender Instruction Manual

Model: B0DDQLRDJF | Brand: CINAMON

1. INTRODUCTION AND OVERVIEW

This manual provides detailed instructions for the setup, operation, and maintenance of your CINAMON WiFi Extender. This device is designed to expand your existing wireless network coverage, eliminate Wi-Fi dead zones, and provide a stable internet connection for multiple devices throughout your home or office.

2. KEY FEATURES

- **Stable Network Speed:** Features 4 high-gain antennas, providing a stable 300Mbps high-speed connection for HD video streaming and online gaming.
- **Easy to Set Up:** Supports one-tap WPS button setup or configuration via mobile phone/PC web interface.
- **Support for Multiple Devices:** Compatible with up to 35 devices, including mobile phones, tablets, laptops, Smart TVs, security cameras, and printers.
- **Wide Compatibility:** Works with 99% of routers and devices on the market.
- **Safe Internet Environment:** Utilizes advanced WPA/WPA2, WPA-PSK/WPA2-PSK security protocols to protect your network and data.

3. SETUP GUIDE

The CINAMON WiFi Extender offers two primary setup methods: WPS (Wi-Fi Protected Setup) and Web Browser/Tether App setup.

3.1. WPS Button Setup (Recommended for quick setup)

1. Plug the WiFi Extender into a power outlet near your existing Wi-Fi router. Wait for approximately 30 seconds until the Power LED turns solid blue.
2. Press the WPS button on your main Wi-Fi router.
3. Within 2 minutes, press the WPS button on the CINAMON WiFi Extender.
4. Wait for the Extender's signal LED to turn solid blue, indicating a successful connection. The extender will automatically restart.



Figure 3.1: WPS Quick Setup. Press the WPS button on your router, then on the extender to establish a connection.

3.2. Web Browser / Tether App Setup

1. Plug the WiFi Extender into a power outlet near your existing Wi-Fi router. Wait until the Power LED turns solid blue.
2. On your phone or PC, open Wi-Fi settings and connect to the extender's default network (e.g., "Wifi Extender xxxx"). No password is required for the initial connection.
3. Open a web browser and enter 192.168.16.1 in the address bar to access the setup page. Alternatively, download and use the Tether app for guided setup.
4. Follow the on-screen instructions to create a local account (username and password).
5. Select the 2.4GHz and/or 5GHz wireless network you wish to extend from the list of available networks.
6. Enter the password for your existing Wi-Fi network.
7. Confirm the settings and click "Finish." The extender will reboot and create extended networks (e.g., "YourNetworkName_EXT").
8. Relocate the extender to a halfway point between your router and the Wi-Fi dead zone. Ensure the signal LED on the extender indicates a strong connection (solid blue).

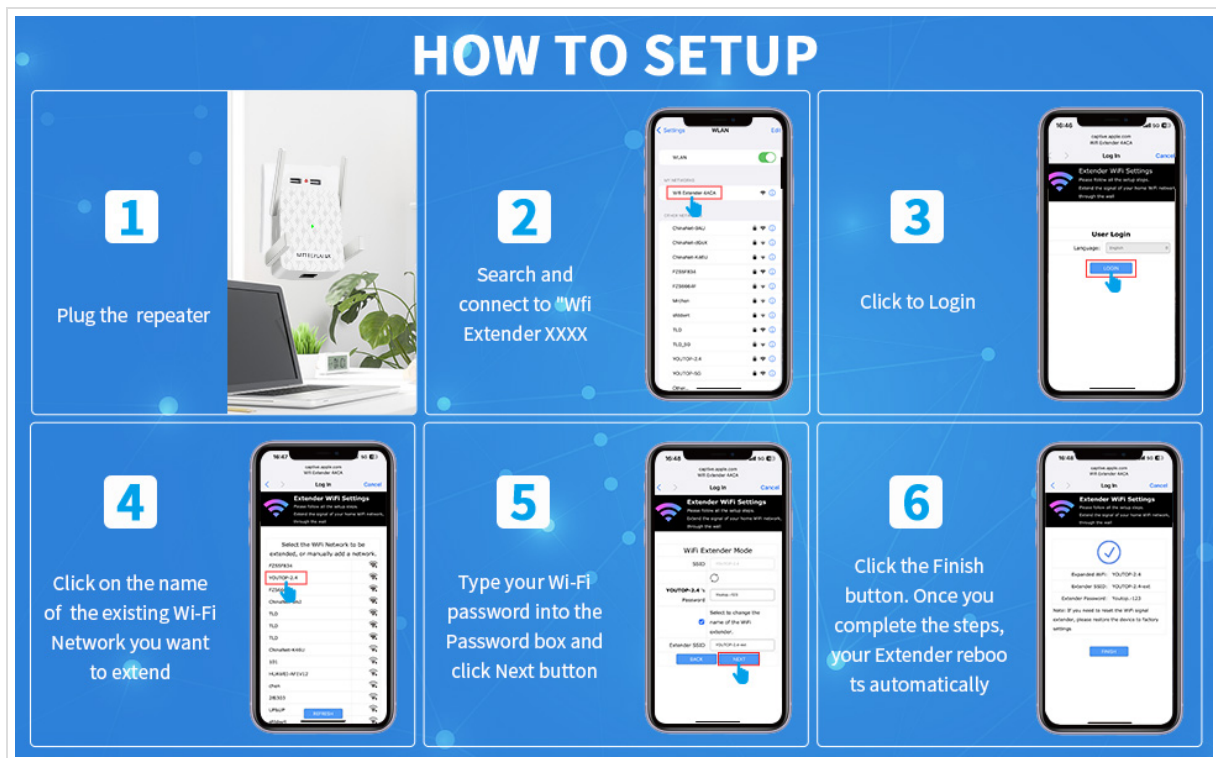


Figure 3.2: Web Browser/Tether App Setup Steps.

4. OPERATING MODES

The CINAMON WiFi Extender supports two main operating modes:

4.1. Repeater Mode (Default)

In Repeater Mode, the extender wirelessly connects to your existing router and amplifies its signal to extend coverage to areas with weak or no Wi-Fi. This is the most common mode for expanding your network.

4.2. Access Point (AP) Mode

In Access Point Mode, the extender connects to your router via an Ethernet cable and then broadcasts a new wireless signal. This effectively turns a wired network connection into a wireless hotspot, ideal for creating a new Wi-Fi network in a specific area.



Figure 4.1: Access Point Mode. The extender can convert a wired connection to Wi-Fi.

5. MAINTENANCE

- **Cleaning:** Use a soft, dry cloth to clean the device. Do not use liquid cleaners or aerosols.
- **Placement:** Avoid placing the extender near sources of strong electromagnetic interference (e.g., microwave ovens, thick walls) to maintain optimal performance.
- **Temperature:** Operate the device within recommended temperature ranges to prevent overheating.
- **Resetting:** To reset the WiFi extender to factory settings, plug it in and wait about 30 seconds. Then, press and hold the Reset button for 5 seconds until the Power LED flashes quickly.

6. TROUBLESHOOTING

Q1: Where should I place the WiFi extender?

A: After successful setup, place the WiFi extender approximately halfway between your router and the area with a weak signal. The chosen location must be within the range of your existing Wi-Fi router network.

Q2: Will this extender reduce my Wi-Fi speed?

A: The WiFi extender extends the Wi-Fi range (areas your main router Wi-Fi cannot cover); it does not increase Wi-Fi speed. Sometimes, Wi-Fi speed may reduce due to external influences like microwave ovens or thick walls. Try placing it at a different position for better signal.

Q3: What can I do if I cannot access the web management page?

A: Try the following methods:

1. Ensure your phone/PC is connected to the extender's wireless network ("Wifi Extender xxxx") during setup.
2. Open your browser and enter 192.168.16.1 in the address bar.
3. If you still cannot access the page, reset the extender (see Maintenance section), then reconnect your device to its wireless network and attempt setup again.

Q4: What is the password for setting up the extender?

A: When you connect to "Wifi Extender xxxx" initially, there is no need to enter a password; you can connect directly. After setup, when you connect to the new extended network, the password will be the same as your root router's password.

Q5: How to reset the WiFi extender?

A: Plug in the extender and wait about 30 seconds. Then, press and hold the Reset button for 5 seconds. The Power LED will flash quickly, and the machine will restore to its factory mode.

7. SPECIFICATIONS

Feature	Detail
Brand	CINAMON
Model	B0DDQLRDJF
Wireless Communication Standard	2.4 GHz Radio Frequency, 802.11a/b/g/n
Frequency Band Class	Single-Band
Special Feature	1-Tap Setup, Access Point Mode
Color	White
Item Weight	5.6 ounces
Package Dimensions	3.9 x 3.58 x 3.27 inches
Manufacturer	CINAMON

8. SAFETY INFORMATION

This Wi-Fi extender incorporates advanced WPA/WPA2 and WPA-PSK/WPA2-PSK security protocols to ensure your network is protected from unauthorized access and interference. Always use the device in a well-ventilated area and avoid covering it to prevent overheating.

9. WARRANTY AND SUPPORT

For warranty information or technical support, please refer to the product packaging or contact CINAMON customer service directly. Keep your purchase receipt for warranty claims.