

[Manuals.plus](#) /

› [YESYAMO](#) /

› YESYAMO 2K Solar Wireless Outdoor Security Camera (C8TB-2PCS) User Manual

## YESYAMO C8TB-2PCS

# YESYAMO 2K Solar Wireless Outdoor Security Camera (C8TB-2PCS) User Manual

Model: C8TB-2PCS

## INTRODUCTION

---

This manual provides detailed instructions for the installation, operation, and maintenance of your YESYAMO 2K Solar Wireless Outdoor Security Camera. Please read this manual thoroughly before use to ensure proper functionality and safety.

## WHAT'S IN THE BOX

---

Verify that all components are present in the package:

- 1 x YESYAMO GX85 Surveillance Camera
- 1 x Solar Panel
- 1 x USB Cable
- 1 x Flexible Mount Bracket
- 1 x User Manual
- Mounting Screws and Wall Plugs



Image: Package contents including the camera, solar panel, USB cable, flexible support, user manual, and mounting screws.

## SETUP INSTRUCTIONS

### 1. Initial Charging

Before installation, fully charge the camera's internal battery using the provided USB cable. This ensures optimal performance from the start, especially if solar charging is limited initially.

### 2. App Installation and Camera Pairing

Download the "Yes iHome" application from your smartphone's app store (Android or iOS). Follow the in-app instructions to pair your camera. Ensure your Wi-Fi network is 2.4GHz, as 5GHz networks are not supported.



Image: The "Yes iHome" mobile application interface for camera control.

### 3. Mounting the Camera and Solar Panel

The camera and solar panel can be installed together or separately. Choose a location that provides optimal sunlight exposure for the solar panel and a clear view for the camera.

1. **Integrated Installation:** Mount the solar panel directly on top of the camera for a compact setup.
2. **Separated Installation:** Use the 3-meter solar cable to position the solar panel in a sunnier spot, away from the camera, if needed.

## Choisissez YESYAMO, Embrassez Une Vie Meilleure



Image: Integrated and separated solar panel installation options.



Image: Step-by-step guide for mounting the camera and solar panel.

Once installed, the solar panel provides continuous power, eliminating the need for frequent battery removal for charging.

## Protection des Données

Les caméras de surveillance YESYAMO utilisent la technologie avancée de cryptage AES 256 bits, mettent régulièrement à jour les mises à niveau logicielles et prennent également en charge le stockage cloud crypté pour protéger pleinement la sécurité et la confidentialité de la maison des clients.



Image: Camera with solar panel providing continuous power.

## OPERATING INSTRUCTIONS

### 1. Pan-Tilt-Zoom (PTZ) Control

The camera offers 355° horizontal pan and 90° vertical tilt rotation, controlled via the mobile application. This allows for comprehensive 360° coverage of your surveillance area.



Image: 360-degree PTZ control via the app.

The camera also features a 5x digital zoom to view details more closely.



Image: PTZ and 5x digital zoom capabilities.

## 2. 2K QHD Video Quality

The camera records in 2K QHD (2304x1296) resolution, providing clear and detailed images. This resolution is superior to standard 1080P cameras, ensuring no details are missed.



Image: 2K QHD resolution with 5x zoom.

## 3. Night Vision Modes

The camera offers two night vision modes:

- **Color Night Vision:** Utilizes built-in spotlights to provide full-color video even in low-light conditions.
- **Infrared Night Vision:** Uses infrared LEDs for clear black-and-white video in complete darkness.
- **Smart Switching:** The camera can automatically switch between modes based on ambient light and detection events.

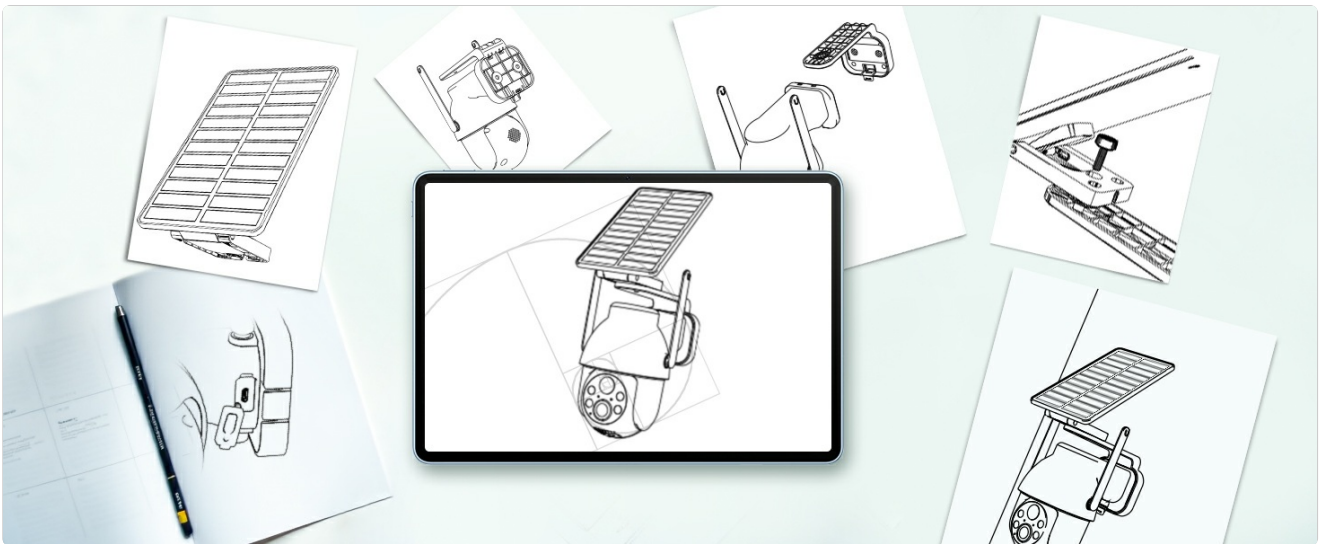


Image: Comparison of color and infrared night vision.

#### 4. PIR Motion Detection & Alerts

The camera features an upgraded PIR (Passive Infrared) sensor for intelligent human detection, reducing false alarms. Upon detecting suspicious activity, the camera can trigger multiple alerts:

- **Siren Alarm:** Emits a loud siren sound.
- **Luminous Alarm:** Activates bright spotlights.
- **Audio Alert:** Plays a pre-recorded message or allows two-way communication.
- **Instant Notifications:** Sends immediate alerts to your smartphone (within 1 second).

#### Rendre la Vie Plus Pratique

Avec la dernière technologie de sécurité, YESYAMO continue de fournir des caméras de sécurité abordables et conviviales pour un usage domestique et commercial.

Nous adhérons au principe du client d'abord et de la qualité d'abord, et nous nous engageons à toujours protéger les biens familiaux et la vie privée de nos clients.



Image: Triple alert system (siren, light, audio) upon detection.

#### 5. AI Intelligent Detection

The camera is equipped with AI humanoid analysis, which can distinguish human shapes from other moving objects. This helps in filtering out irrelevant movements like pets or swaying branches, focusing on actual threats.

- **Humanoid Detection:** Free feature that accurately identifies human movement.

- **Advanced Detection (Paid):** Detection of vehicles, packages, and animals may require a subscription.



Image: AI intelligent detection distinguishing humans from other objects.

You can define specific surveillance zones and time schedules within the app to customize detection areas and reduce unwanted alerts.

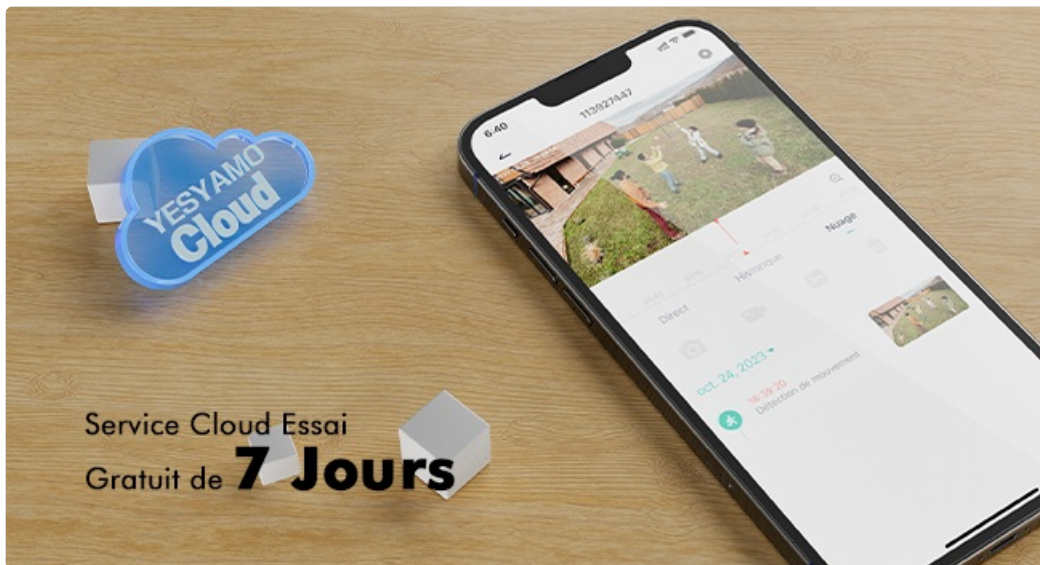


Image: Customizable detection zones.

## 6. Two-Way Audio

Communicate directly with visitors or deter intruders using the camera's built-in microphone and speaker. This feature is accessible through the mobile application.



Image: Two-way audio communication feature.

## 7. Storage Options

The camera supports two storage methods for recorded footage:

- **Micro SD Card:** Supports up to 128GB Micro SD cards (not included). Footage is stored locally and can be accessed via the app.
- **Cloud Storage:** A 7-day free trial of cloud storage is available. Cloud storage provides encrypted data backup and remote access to recordings.

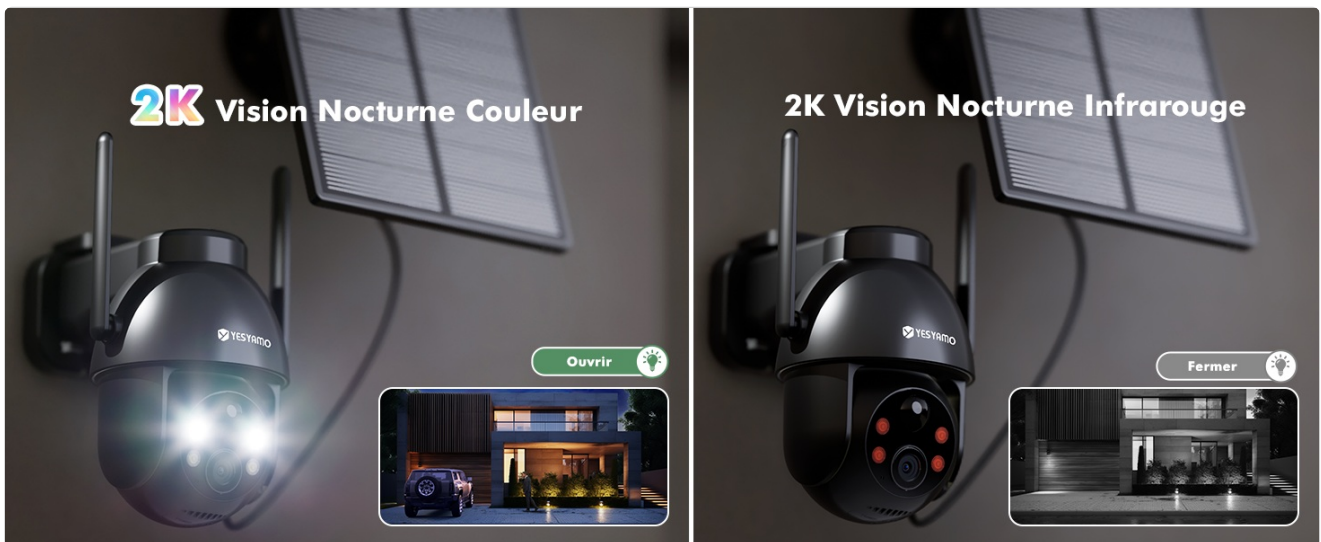


Image: Micro SD card slot for local storage.



Image: Cloud storage option with a 7-day free trial.

All data is protected with advanced 256-bit AES encryption to ensure privacy and security.



Image: Data encryption and privacy features.

## 8. Device Sharing

You can share access to your camera with family members or trusted individuals through the app by scanning a QR code or adding their account.

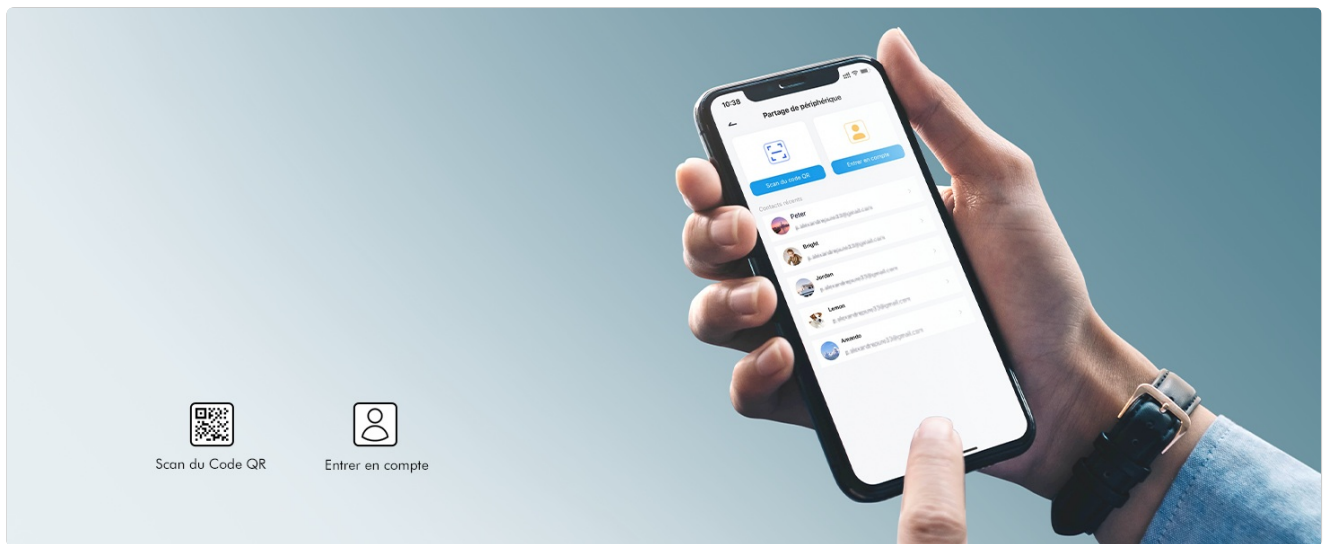


Image: Device sharing options in the app.

## 9. Smart Home Integration

The camera is compatible with Alexa, allowing voice control for certain functions, such as viewing the camera feed on compatible smart displays.

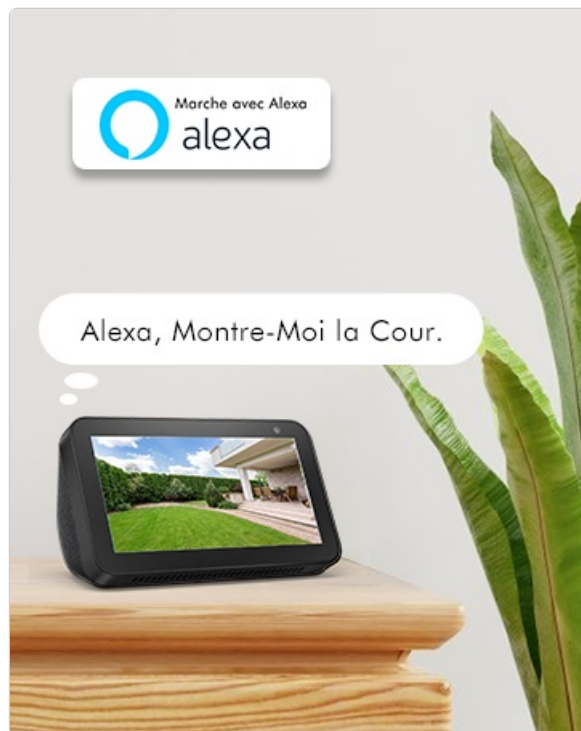


Image: Alexa compatibility for smart home integration.

## MAINTENANCE

### 1. Weather Resistance

The camera is IP66 certified waterproof, designed to withstand various outdoor weather conditions, including rain, snow, and extreme temperatures ranging from -20°C to 60°C.



Image: IP66 waterproof rating and temperature resilience.



Image: Camera operating in various weather conditions.

## 2. Cleaning

Periodically clean the camera lens and solar panel with a soft, damp cloth to ensure clear image quality and efficient solar charging. Avoid using harsh chemicals.

## 3. Firmware Updates

Regularly check the "Yes iHome" app for available firmware updates. Updates often include performance improvements, new features, and security enhancements.

## TROUBLESHOOTING

### 1. Camera Not Connecting to Wi-Fi

- Ensure your Wi-Fi network is 2.4GHz. The camera does not support 5GHz Wi-Fi.
- Check the Wi-Fi signal strength at the camera's installation location.

- Restart your router and the camera.
- Ensure the camera is within range of your Wi-Fi router.

## 2. Poor Image Quality

- Clean the camera lens.
- Ensure adequate lighting, especially for color night vision.
- Check your internet connection speed.

## 3. False Alarms

- Adjust the PIR detection sensitivity in the app.
- Define specific detection zones to exclude areas with frequent non-human movement (e.g., trees, busy roads).
- Ensure the camera's AI humanoid detection is enabled.

## 4. Solar Panel Not Charging

- Ensure the solar panel is positioned in direct sunlight for several hours daily.
- Clean the surface of the solar panel to remove any dirt or debris.
- Check the connection cable between the solar panel and the camera.

## PRODUCT SPECIFICATIONS

<b>Brand</b>	YESYAMO
<b>Model Name</b>	C8TB-2PCS
<b>Connectivity Technology</b>	Wireless (2.4GHz Wi-Fi, Bluetooth)
<b>Special Features</b>	Uninterrupted solar power, 2K QHD quality, Color night vision, PTZ control, Motion detection
<b>Usage</b>	Outdoor, Indoor
<b>Compatible Devices</b>	Smartphone (Android & iOS)
<b>Power Source</b>	Solar power, Battery power (5 Volts, 1.6 Watts)
<b>IP Rating</b>	IP66 (Waterproof)
<b>View Angle</b>	360 Degrees (Pan/Tilt)
<b>Digital Zoom</b>	5x
<b>Effective Capture Resolution</b>	3 Megapixels (2K QHD)
<b>Memory Card Support</b>	Micro SD up to 128GB
<b>Video Capture Format</b>	MP4/AVI
<b>Night Vision</b>	Color night vision, Infrared night vision, Smart switching
<b>Dimensions</b>	18.3 x 17.2 x 14.3 cm
<b>Weight</b>	1.56 Kilograms

Operating Temperature

-20°C to 60°C

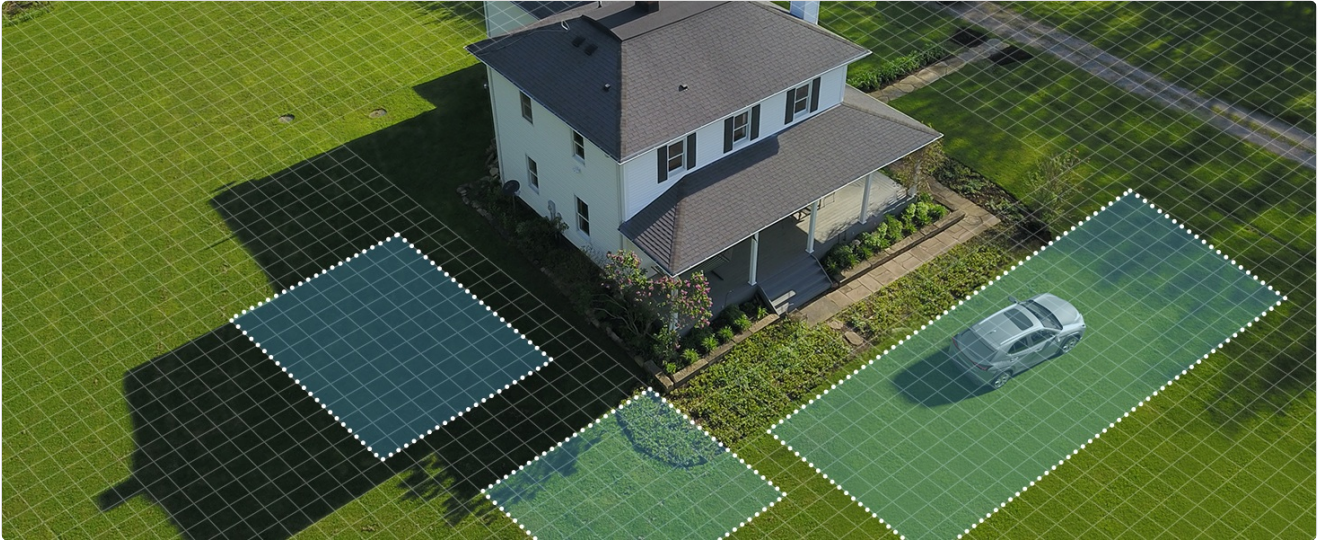


Image: Certifications and safety features.

## WARRANTY AND SUPPORT

YESYAMO is committed to providing reliable products and excellent customer service.

- **Warranty:** The product comes with a 2-year warranty.
- **Technical Support:** Lifetime technical assistance is available.
- **Online Service:** 24/7 online customer service is provided.

### Le Service d'Abord, le Client d'Abord

2 Ans de  
Garantie



Assistance  
Technique à Vie

Service en Ligne  
7x24 Heures



Image: Warranty and support information.

For any questions or assistance, please contact YESYAMO customer support through the contact information provided in your product packaging or on the official YESYAMO website.

