

Wisoqu Wisoqufnh09zd4c6

Wisoqu 5G WiFi6 LTE Mobile Hotspot User Manual

Model: **Wisoqufnh09zd4c6**

Brand: Wisoqu

1. INTRODUCTION

This manual provides detailed instructions for the Wisoqu 5G WiFi6 LTE Mobile Hotspot, Model Wisoqufnh09zd4c6. This device offers high-speed 5G and WiFi6 connectivity, allowing you to create a portable internet hotspot for up to 16 devices. It features broad frequency support, a rugged design, and a high-capacity battery for reliable performance during travel and daily use.

Please read this manual thoroughly before using the device to ensure proper operation and to maximize its capabilities.

2. PRODUCT FEATURES

- **5G High Speed Connectivity:** Experience download speeds up to 2.77Gbps and upload speeds up to 1.25Gbps for seamless online activities.
- **Broad Frequency Support:** Compatible with 5G NR, 4G, and 3G frequencies, ensuring wide international coverage. Features a built-in 1T4R 5G antenna for strong reception.
- **Rugged and Durable Design:** IP67 reinforced design protects against drops, dust, and water, making it suitable for various travel conditions.
- **High Capacity Battery:** Equipped with a 7100mAh polymer battery for extended usage, providing uninterrupted connectivity throughout the day.
- **Dual-Band Wi-Fi and Connection Sharing:** Supports 2.4GHz and 5.8GHz bands (WiFi6, 802.11 a/b/g/n/ac/ax) and can connect up to 16 devices simultaneously.
- **2.01 Inch Color Screen:** Provides easy monitoring of data usage, signal strength, and network settings.
- **Hot Swappable SIM Card Support:** Conveniently change SIM cards without powering down the

device.

3. PACKAGE CONTENTS

The standard package for the Wisoqu 5G WiFi6 LTE Mobile Hotspot includes:

- Wisoqu 5G WiFi6 LTE Mobile Hotspot Device
- USB Charging Cable
- User Manual



Image: The Wisoqu 5G WiFi6 LTE Mobile Hotspot device shown alongside its included USB charging cable.

4. SETUP GUIDE

4.1. SIM Card Installation

1. Locate the SIM card slot on the side of the device.
2. Gently open the SIM card slot cover.
3. Insert your activated Nano-SIM card into the slot with the gold contacts facing down and the notched corner aligned correctly.
4. Close the SIM card slot cover securely.



Image: A detailed view of the device's side, showing the USB-C charging port and the SIM card slot, which is covered by a small flap.

4.2. Powering On/Off

- **To Power On:** Press and hold the Power button (usually located on the side) for a few seconds until the screen illuminates.
- **To Power Off:** Press and hold the Power button until a power-off option appears on the screen, then confirm. Alternatively, a long press may directly power off the device.

4.3. Initial Wi-Fi Connection

1. Once powered on, the device's screen will display network information, including the Wi-Fi Network Name (SSID) and Password (Key).

2. On your device (smartphone, laptop, tablet), search for available Wi-Fi networks.
3. Select the SSID displayed on your hotspot's screen.
4. Enter the Wi-Fi Key when prompted.
5. Your device should now be connected to the internet via the mobile hotspot.

5.8G SSID:

7755_5G

2.4G SSID:

7755_2.4G

WiFi Key: 12345678

Model:JC09





Image: The back of the mobile hotspot, displaying a label with the default 5.8G and 2.4G SSIDs and the Wi-Fi Key for initial connection.

5. OPERATING INSTRUCTIONS

5.1. Connecting Multiple Devices

The Wisoqu Mobile Hotspot supports connecting up to 16 devices simultaneously. Follow the "Initial Wi-Fi Connection" steps for each device you wish to connect.

High speed transfer

Enjoy fast and secure 5G speeds with 2.77Gbps download speeds and 1.25Gbps upload speeds

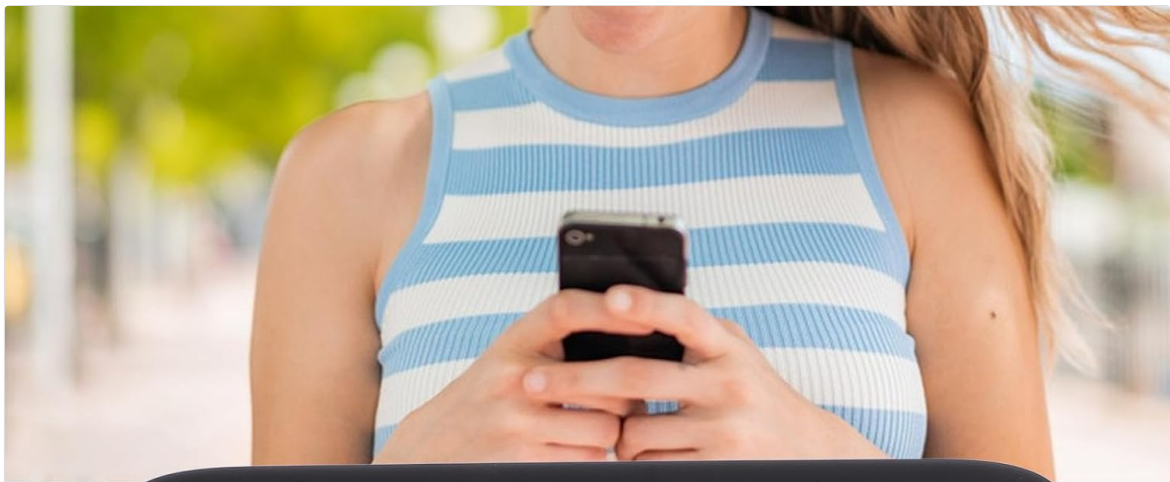


Image: An illustration depicting various electronic devices, such as laptops, tablets, and smartphones, wirelessly connected to the mobile hotspot, demonstrating its multi-device capability.

5.2. Monitoring Device Status

The 2.01-inch color screen provides real-time information:

- **Signal Strength:** Indicates the strength of the 5G/4G cellular signal.
- **Battery Level:** Shows the remaining battery charge.
- **Connected Devices:** Displays the number of devices currently connected to the hotspot.
- **Data Usage:** Provides an overview of data consumed.
- **Network Name (SSID) & Password:** Visible for easy reference.



Network Frequency Support

Wide range of network frequency support including 5G NR, 4G and 3G frequencies for reliable and fast connectivity

Image: The Wisoqu mobile hotspot with its screen illuminated, showing icons for signal strength, battery level, connected devices, and other network details.

5.3. Charging the Device

Connect the included USB charging cable to the device's USB-C port and plug the other end into a compatible USB power adapter (not included) or a computer's USB port. The screen will indicate charging status.

6. MAINTENANCE

- **Cleaning:** Use a soft, dry cloth to clean the device. Avoid liquid cleaners or abrasive materials.
- **Storage:** Store the device in a cool, dry place away from direct sunlight and extreme temperatures.
- **Battery Care:** For optimal battery life, avoid fully discharging the battery frequently. Charge the device regularly.
- **Software Updates:** Periodically check the manufacturer's website for any available firmware updates to ensure optimal performance and security.

7. TROUBLESHOOTING

Problem	Possible Solution
No Internet Connection	<ul style="list-style-type: none"> • Ensure the SIM card is correctly inserted and activated. • Check for cellular signal strength on the device screen. • Restart the mobile hotspot and the connected device. • Verify your data plan is active and has available data.
Device Not Powering On	<ul style="list-style-type: none"> • Ensure the battery is charged. Connect to a power source. • Press and hold the Power button for a longer duration (5-10 seconds).
Slow Connection Speed	<ul style="list-style-type: none"> • Move to an area with better cellular signal. • Reduce the number of connected devices. • Ensure no background applications are consuming excessive bandwidth.
Cannot Connect to Wi-Fi	<ul style="list-style-type: none"> • Double-check the Wi-Fi password (Key). • Ensure the hotspot is powered on and broadcasting its Wi-Fi signal. • Try forgetting the network on your connecting device and reconnecting.

8. SPECIFICATIONS



Image: The mobile hotspot device shown with its length (136mm/3.35in), width (72mm/2.83in), and thickness (16mm/0.63in) clearly

indicated by arrows and measurements.

Feature	Detail
Model Name	Wisoqufnh09zd4c6
Brand	Wisoqu
Connectivity Technology	5G, 4G LTE, 3G, Wi-Fi (802.11a/b/g/n/ac/ax)
Wireless Communication Standard	802.11a/b/g/n/ac/ax (WiFi6)
Frequency Band Class	Dual-Band (2.4GHz, 5.8GHz)
Max Download Speed	Up to 2.77Gbps
Max Upload Speed	Up to 1.25Gbps
Battery Capacity	7100mAh Polymer Battery
Connected Devices	Up to 16 devices simultaneously
Screen Size	2.01 Inch Color Screen
Dimensions (L x W x H)	136mm x 72mm x 16mm (approx. 5.35 x 2.83 x 0.63 inches)
Item Weight	10.8 ounces
Durability	IP67 reinforced design (drop, dust, water protection)

9. PRODUCT OVERVIEW VIDEO

Your browser does not support the video tag.

Video: A brief overview of the Wisoqu 5G WiFi6 LTE Mobile Hotspot, showcasing its design, screen interface, and key features. This video provides a visual introduction to the device's appearance and basic functionality.

10. WARRANTY AND SUPPORT

For warranty information, please refer to the documentation included with your purchase or visit the official Wisoqu website. If you encounter any issues or require technical assistance, please contact Wisoqu customer support through their official channels.

Protection plans may be available for extended coverage. Please check with your retailer for details on available protection plans.

