



Manuals.plus /

› iPormis /

› iPormis Queen Size Floating Bed Frame with Charging Station and LED Light - Instruction Manual

iPormis 97-1220C1

iPormis Queen Size Floating Bed Frame with Charging Station and LED Light

Model: 97-1220C1

1. PRODUCT OVERVIEW

The iPormis Queen Size Floating Bed Frame is designed to provide a modern aesthetic and functional features for your bedroom. This platform bed frame includes a built-in charging station, adjustable LED lighting, and a robust steel construction for stability and durability. It is engineered for a noise-free experience and does not require a box spring.



Image 1.1: iPormis Queen Size Floating Bed Frame in a bedroom setting.



Image 1.2: The floating design with customizable RGB LED lighting.

Your browser does not support the video tag.

Video 1.1: Overview of the iPormis Floating Bed Frame features, including LED lights and charging station.

2. SAFETY INFORMATION

Please read and understand all safety instructions before assembly and use.

- Do not exceed the maximum weight capacity of **1000 pounds**.
- Exercise caution during assembly and handling to avoid injury from sharp edges.
- Always follow the assembly instructions carefully to ensure proper construction and prevent instability or collapse.
- Ensure all connections are secure before placing a mattress on the frame.

3. PACKAGE CONTENTS

Verify that all components are present before beginning assembly. Refer to the included installation manual for a detailed parts list.

- Metal Bed Frame components
- Charging Station unit

- LED Light Strip
- Toolkits for assembly
- Installation Manual



Image 3.1: All components of the bed frame laid out for assembly.

4. ASSEMBLY INSTRUCTIONS

The iPormis bed frame is designed for straightforward assembly. A detailed step-by-step guide is provided in the included Installation Manual. Please follow these instructions carefully.

Key Assembly Points:

- Ensure all parts are identified and laid out before starting.
- Connect frame sections using the provided hardware and tools.
- Install the metal slats securely into the frame.
- Attach the charging station and LED light strip as directed.

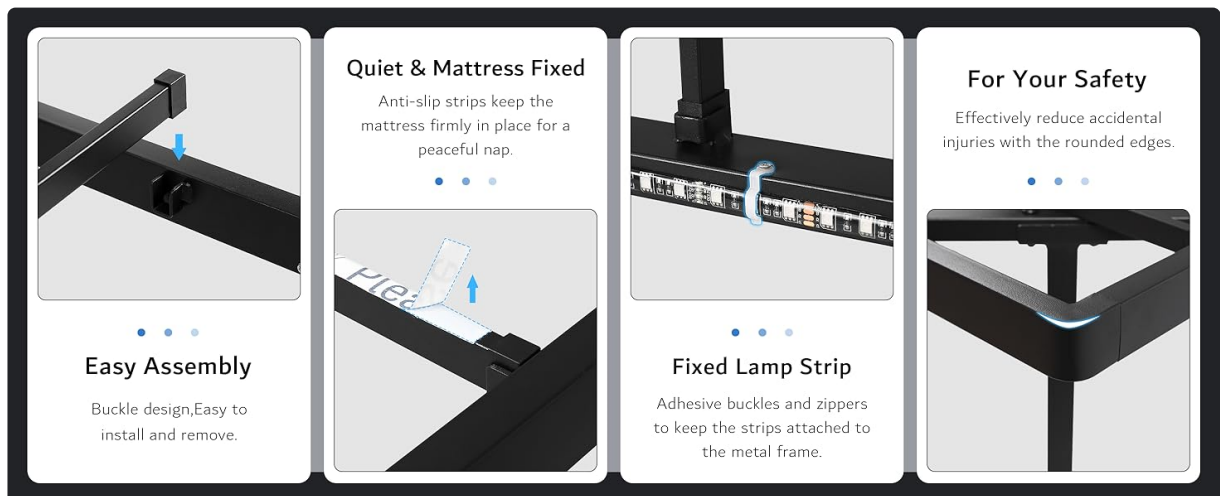
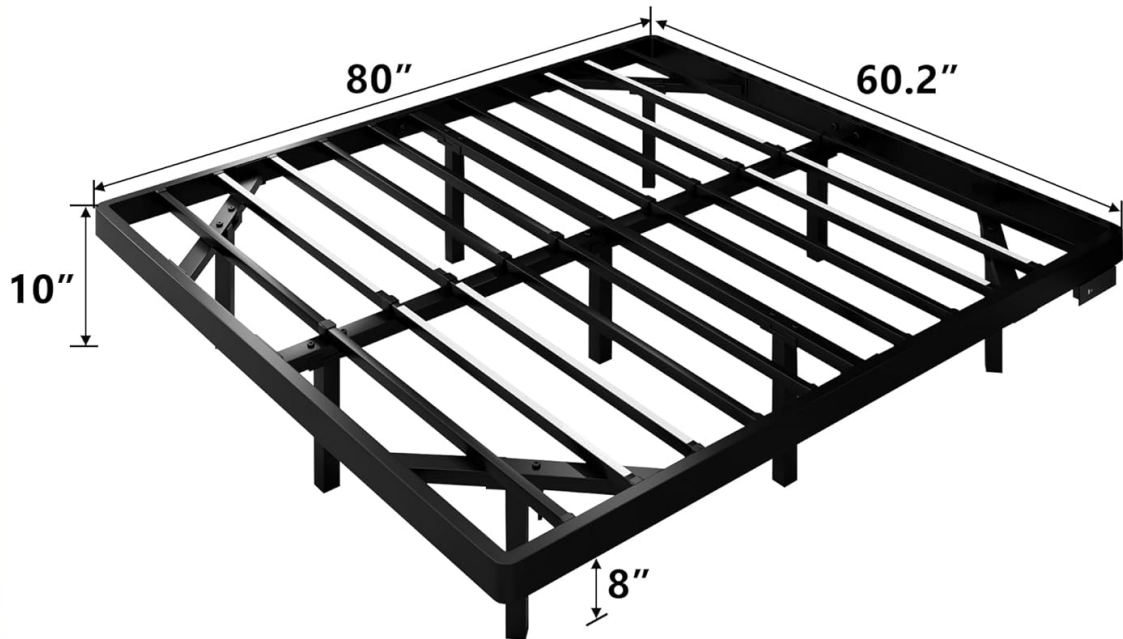


Image 4.1: Visual guide highlighting easy assembly features, mattress stability, and secure LED strip installation.

QUEEN SIZE

L*W*H: 80" x 60.2" x 10"



8 inch
Hidden Thick Legs



1000lbs
Weight Capacity



20ft / 6m
LED Light Strip



6.6ft / 2m
Charging Station

Image 4.2: Structural overview of the bed frame, including dimensions and support features.

5. OPERATING INSTRUCTIONS

5.1. Charging Station

The integrated charging station provides convenient power access. It includes:

- 1 x Type-C port
- 1 x USB port
- 2 x Standard 110V/12A outlets

To use, simply plug your devices into the appropriate ports. Ensure the bed frame is connected to a power source.



Image 5.1: Detail of the built-in charging station with USB and Type-C ports.



Image 5.2: Illustration of the convenient power outlet and its components.

5.2. LED Lighting

The integrated LED strip lights offer customizable illumination. Control options include:

- **Remote Control:** Use the provided remote to adjust colors, brightness, and lighting modes.
- **Smartphone App:** Download the compatible app to access additional features such as timing functions, music mode, and a wider range of colors (over 60,000 options).

The LED strips are secured with straps and zippers to maintain their position.

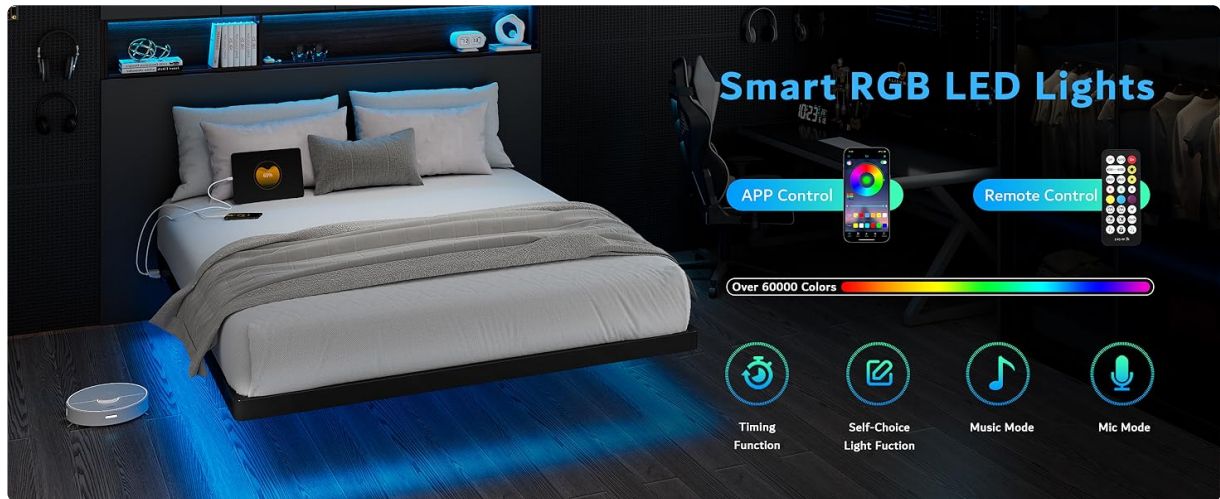


Image 5.3: Control options for the smart RGB LED lights via app and remote.

6. MAINTENANCE

To maintain the appearance and longevity of your bed frame:

- **Cleaning:** Wipe the metal frame surfaces with a dry cloth. Avoid abrasive cleaners or harsh chemicals.
- **LED Lights:** Periodically check the LED strip and its fastenings to ensure they remain secure.
- **Connections:** Ensure all electrical connections for the charging station and LED lights are secure and free from damage.

7. TROUBLESHOOTING

7.1. Noise Issues

The bed frame is designed to be noise-free. If you experience squeaking or other noises:

- **Check Assembly:** Re-tighten all bolts and connections on the frame. Ensure all slats are properly seated.
- **Mattress Placement:** Verify the mattress is correctly positioned and not causing friction against the frame.

7.2. LED Lights Not Sticking

If the LED light strips detach or do not adhere properly:

- **Re-secure:** Use the provided adhesive buckles and zip ties to firmly re-attach the LED strips to the metal frame.
- **Clean Surface:** Ensure the surface where the LED strip is applied is clean and dry before re-applying any adhesive.

Provide adhesive buckles and zip ties to make the light strips stick well to the metal frame.

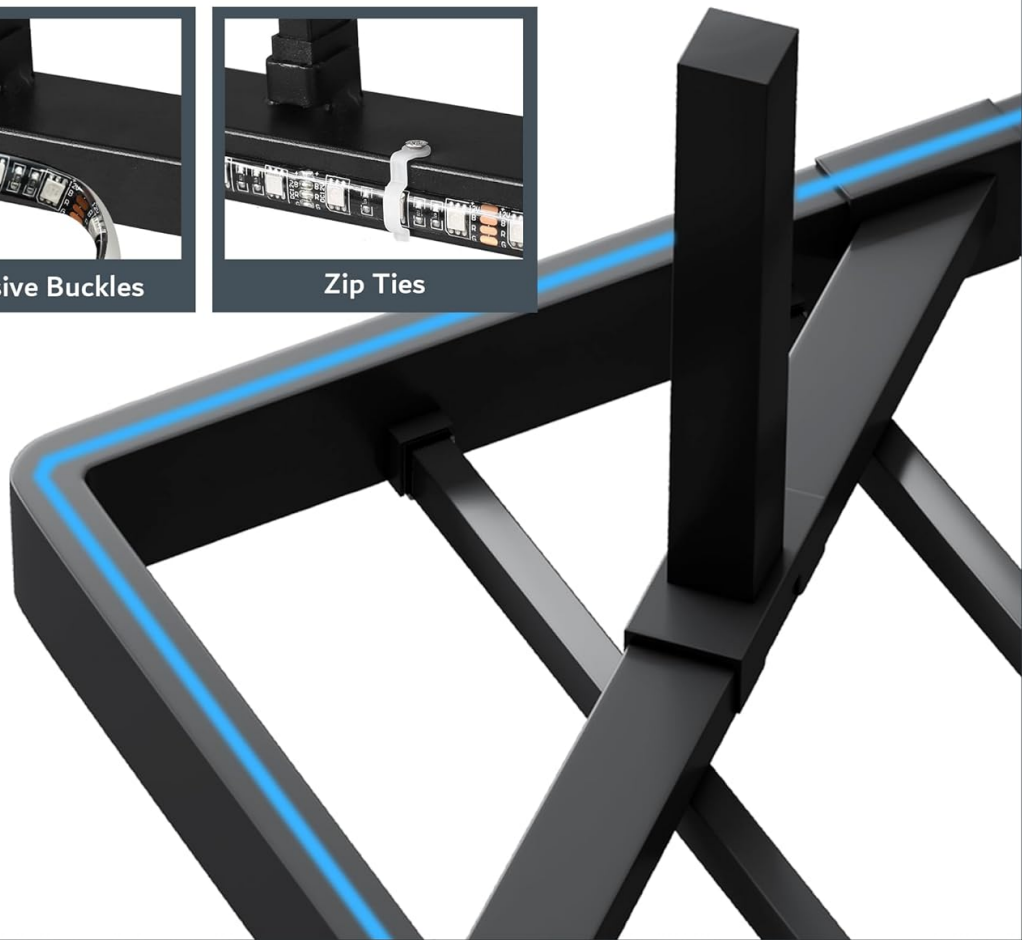
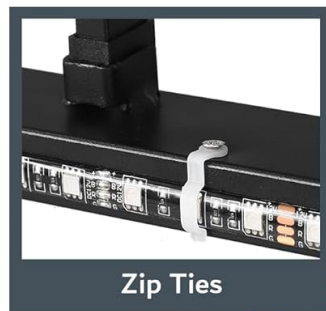
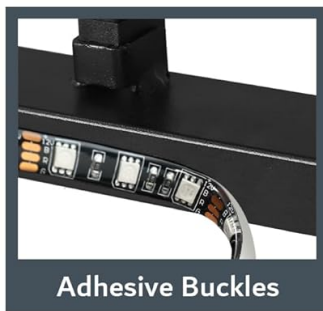


Image 7.1: Methods for securely fixing the LED light strips.

8. SPECIFICATIONS

Feature	Detail
Size	Queen
Product Dimensions	80"L x 60.2"W x 8"H
Special Features	Charging Station, LED Light, No Box Spring Needed, Noise-Free, Squeak Resistant
Color	Black
Finish Type	Stainless Steel
Material	Metal
Item Weight	41 pounds
Weight Capacity	1000 pounds
Assembly Required	Yes
Model Number	97-1220C1

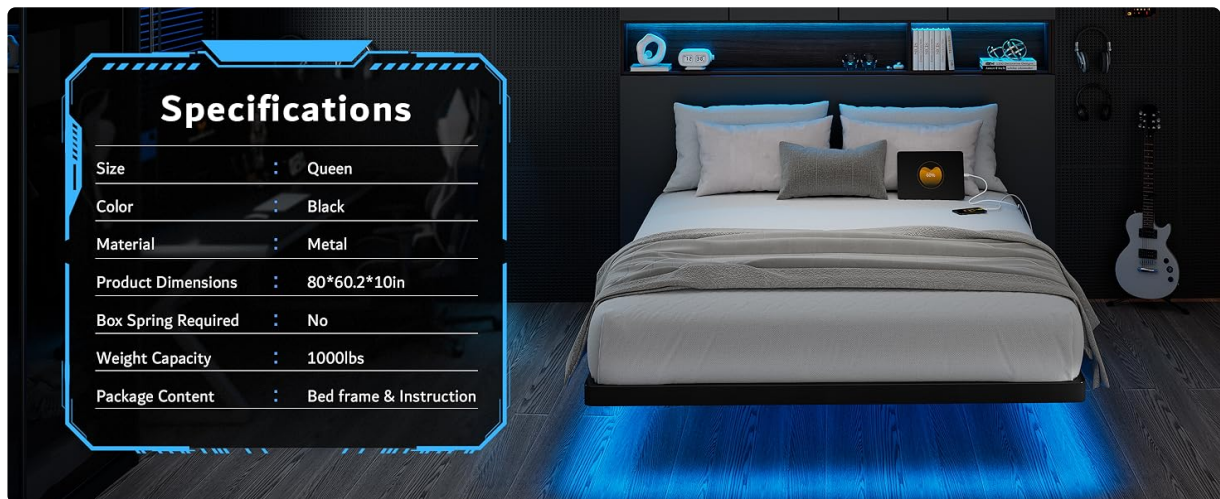


Image 8.1: Visual representation of product specifications.

9. WARRANTY AND SUPPORT

For warranty information, please refer to the documentation included with your product or contact iPormis customer support directly. Additional support and product information may be available on the official iPormis brand store.

Visit the iPormis Store for more products and support.