

YEELIGHT YLYDD-0046

YEELIGHT Smart Outdoor Permanent RGB LED String Lights (150 Ft) - User Manual

Model: YLYDD-0046

1. INTRODUCTION

Thank you for choosing the YEELIGHT Smart Outdoor Permanent RGB LED String Lights. This manual provides essential information for the safe and effective installation, operation, and maintenance of your new lighting system. These 150-foot string lights are designed for permanent outdoor use, offering a wide range of customizable lighting effects, app control, and music synchronization capabilities. They are built to withstand various weather conditions, ensuring year-round enjoyment.



Image 1.1: YEELIGHT Smart Outdoor Permanent String Lights, showing the product packaging, the string lights, and a smartphone displaying the control app.

2. SETUP AND INSTALLATION

Proper installation is crucial for the performance and longevity of your YEELIGHT Smart Outdoor Permanent String Lights. Follow these steps carefully:

1. **Planning the Layout:** Determine the desired path for your string lights. Ensure the total length does not exceed 150 feet for this model. Consider the spacing of the individual light beads (approximately 1.64 ft or 0.5m apart).
2. **Surface Preparation:** Clean the installation surface thoroughly. Ensure it is dry and free from dust, dirt, or grease for optimal adhesive performance.
3. **Adhesive Application:** The lights come with pre-applied 3M adhesive backing. Carefully peel off the protective film and press the light firmly against the surface for at least 5 seconds. This adhesive is suitable for various surfaces including concrete, marble, wood, metal, and vinyl.
4. **Securing with Clips:** For enhanced security and long-term durability, use the provided screw clips. Install a clip near each light bead or at regular intervals along the string. This prevents sagging and provides additional support, especially in windy conditions.

5. **Connecting Multiple Strips (if applicable):** If using multiple string light sections, connect them using the waterproof connectors. Ensure the connections are secure and the waterproof caps are tightly screwed in place to prevent moisture ingress.
6. **Power Connection:** Connect the string lights to the power adapter and then plug the adapter into a suitable outdoor power outlet. Ensure the outlet is protected from weather elements.

Easy Installation



Image 2.1: Close-up view of a single light unit, illustrating both the adhesive backing and the option for securing with a screw clip for robust installation.

Easy To Install

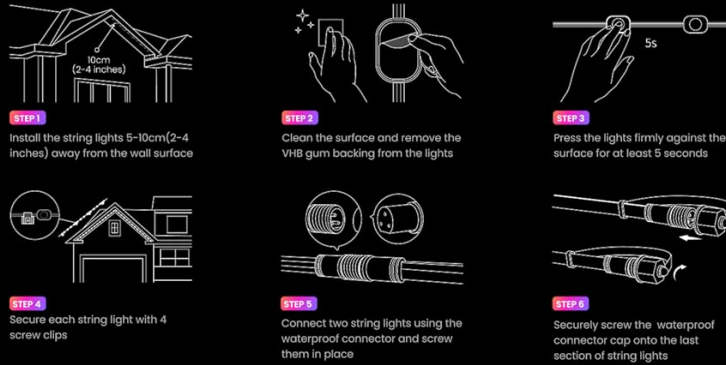


Image 2.2: Step-by-step diagram illustrating the installation process, from positioning and cleaning to securing with clips and connecting sections.

3. OPERATING INSTRUCTIONS

Your YEELIGHT Smart Outdoor Permanent String Lights are controlled via the Yeelight mobile application. Follow these steps to get started:

1. **Download the Yeelight App:** Search for "Yeelight" in your smartphone's app store (iOS or Android) and download the application.
2. **Pairing the Lights:** Open the Yeelight app and follow the on-screen instructions to add your new device. Ensure Bluetooth is enabled on your smartphone for initial pairing.
3. **Basic Control:** Once paired, you can turn the lights on/off, adjust brightness, and change colors directly from the app.
4. **Preset Scenes:** The app offers over 20 preset lighting scenes suitable for various occasions like Christmas, Halloween, parties, or daily ambiance. Select a scene to instantly transform your outdoor space.
5. **Customization (DIY):** Utilize the DIY feature to customize each LED's color, dynamic effects, and speed. This allows for personalized lighting designs.
6. **Music Sync:** Activate the Music Flow feature in the app to synchronize the lights with your music. The lights will respond to audio picked up by your phone or the control box, creating a dynamic light show.
7. **Warm White Mode:** Easily switch to a 3000K warm white mode for cozy, everyday lighting.

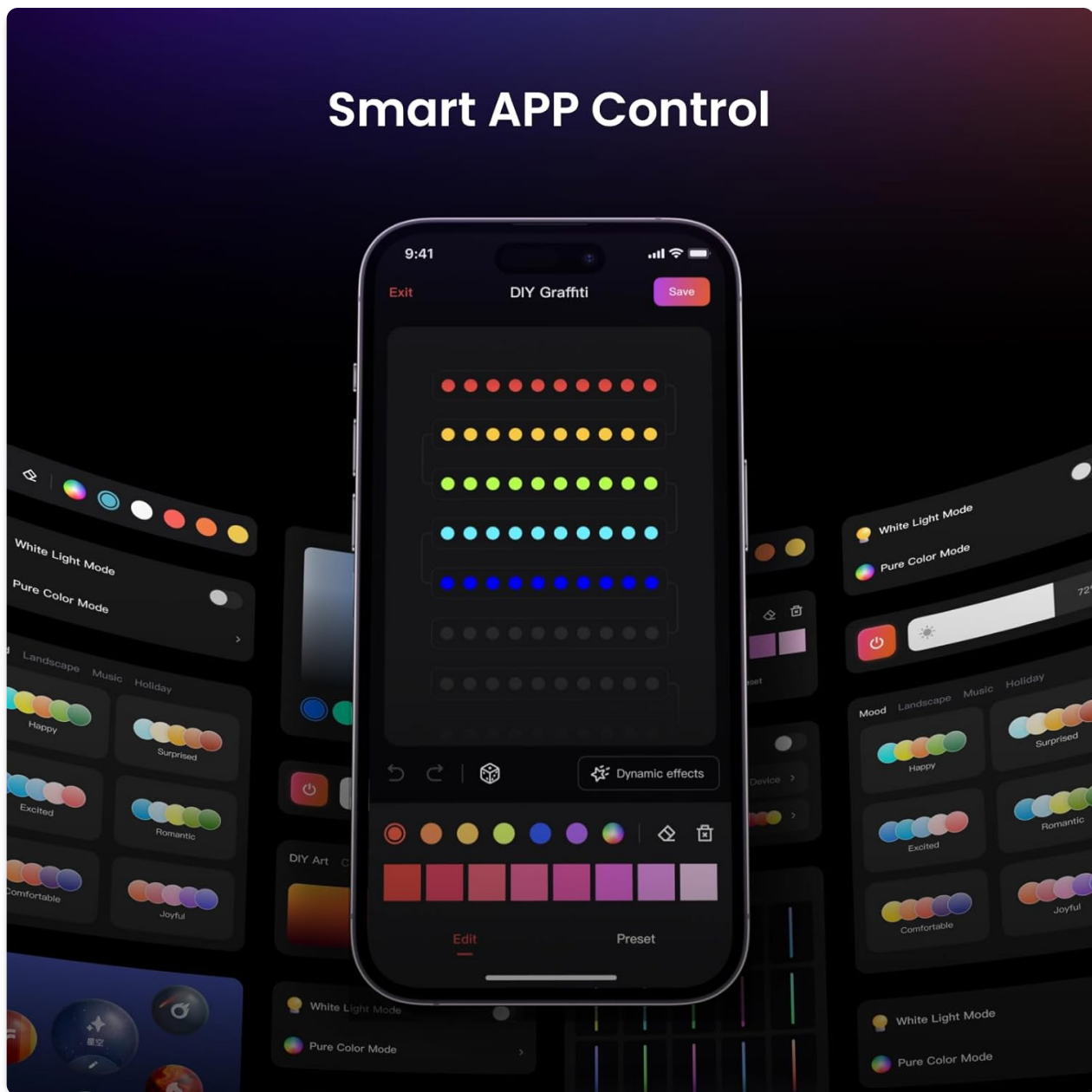


Image 3.1: A smartphone displaying the Yeelight app, showing various color and effect customization options for the string lights.



Image 3.2: The Yeelight app interface, highlighting the extensive customization options for colors, motion effects, and speed to create unique lighting displays.

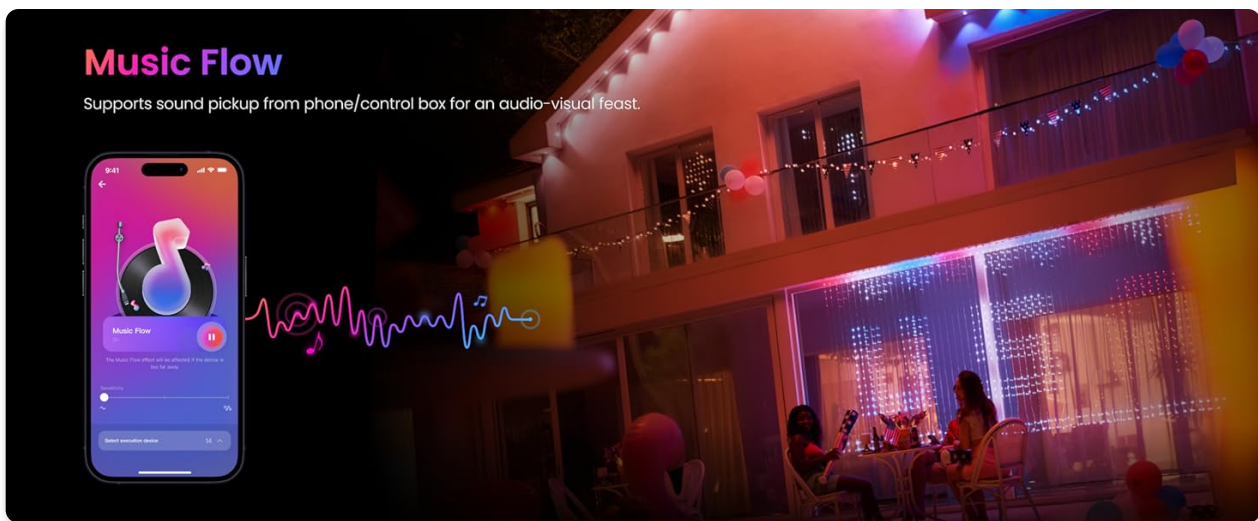


Image 3.3: The Yeelight app demonstrating the Music Flow feature, where the lights dynamically change in sync with music, enhancing the audio-visual experience.

4. MAINTENANCE

The YEELIGHT Smart Outdoor Permanent String Lights are designed for durability and minimal maintenance. Adhering to these guidelines will ensure their longevity:

- **Cleaning:** Periodically wipe the light surfaces with a soft, damp cloth to remove dust and debris. Avoid using harsh chemicals or abrasive cleaners, as these can damage the waterproof coating or LED components.
- **Water Resistance:** The LED strip is IP67 waterproof, and the control box is IP65 waterproof. This protects against dust and water jets. While designed for outdoor use, avoid submerging the lights or exposing them to high-pressure water streams.
- **Temperature Range:** The lights are designed to operate reliably in temperatures ranging from -4°F to 140°F (-20°C to 60°C). Extreme temperatures outside this range may affect performance or lifespan.
- **Connection Integrity:** Periodically check all connections, especially the waterproof connectors between light sections, to ensure they remain tight and secure.
- **Physical Inspection:** Inspect the entire length of the string lights for any signs of physical damage, such as cuts in the cable or cracked light housings. If damage is found, discontinue use and contact customer support.



Image 4.1: Visual representation of the lights' durability, showcasing their resistance to rain (IP65/IP67 waterproof), high temperatures (140°F), and low temperatures (-4°F).

5. TROUBLESHOOTING

If you encounter issues with your YEELIGHT Smart Outdoor Permanent String Lights, refer to the following common troubleshooting steps:

- **Lights Not Turning On:**
 - Check if the power adapter is securely plugged into a working outlet.
 - Ensure all connections between the light sections and the control box are firm.
 - Verify that the power outlet is receiving power.
- **Lights Not Responding to App:**
 - Ensure Bluetooth is enabled on your smartphone and you are within range of the lights.
 - Restart the Yeelight app.
 - Try restarting your smartphone.
 - If the issue persists, try unpairing and re-pairing the lights in the app.
- **Inconsistent Lighting or Flickering:**

- Check for any loose connections along the string.
 - Ensure the power supply is stable and not overloaded.
 - Inspect the light strip for any visible damage.
- **Lights Not Syncing with Music:**
 - Ensure the Music Flow feature is activated in the Yeelight app.
 - Verify that your phone's microphone or the control box's microphone is enabled and picking up sound.
 - Adjust the sensitivity settings in the app if available.

If these steps do not resolve the issue, please contact YEELIGHT customer support for further assistance.

6. SPECIFICATIONS

Feature	Specification
Brand	YEELIGHT
Model Number	YLYDD-0046
Length	150 Feet
Light Source Type	LED (RGBICW)
Number of Light Sources	300
LED Spacing	1.64 ft (0.5m)
Lumen per LED	40 lm
Beam Angle	90°
Color Temperature (Warm White)	3000 Kelvin
Control Method	App Control (Bluetooth)
Indoor/Outdoor Usage	Outdoor
Water Resistance Level	LED Strip: IP67, Control Box: IP65
Operating Temperature	-4°F to 140°F (-20°C to 60°C)
Power Source	Corded Electric
Material	Polyester, Rubber
Included Components	Light strip, Power adapter, Mounting clips

Superior Lighting Performance

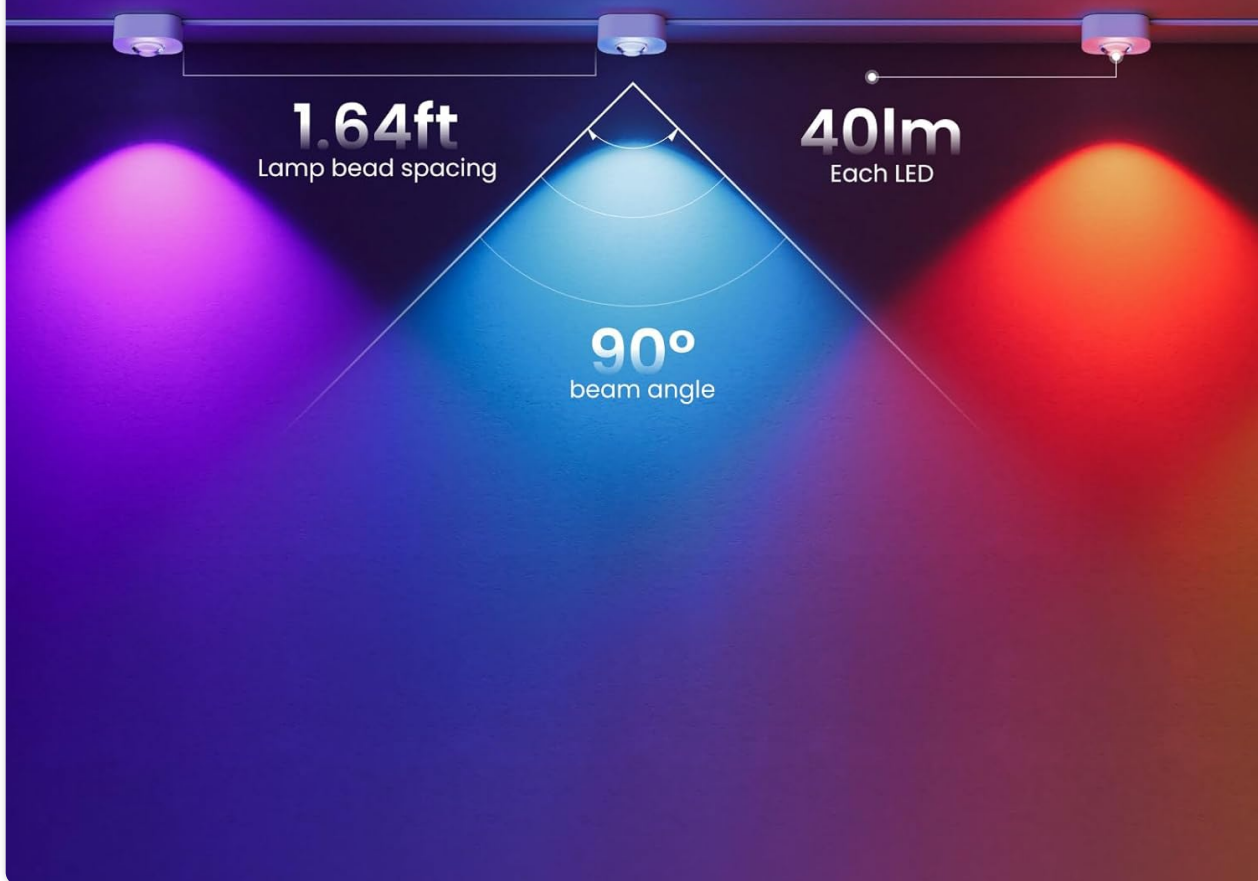


Image 6.1: Technical diagram detailing the 1.64 ft (0.5m) lamp bead spacing, 40 lm per LED, and a 90° beam angle for optimal light distribution.

7. WARRANTY AND SUPPORT



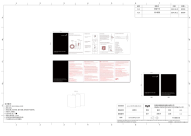
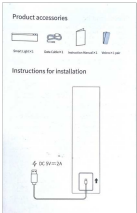

YEELIGHT products are manufactured with high-quality standards. For specific warranty information regarding your Smart Outdoor Permanent RGB LED String Lights, please refer to the warranty card included in your product packaging or visit the official YEELIGHT website. The warranty typically covers manufacturing defects under normal use conditions.

For technical support, troubleshooting assistance, or warranty claims, please contact YEELIGHT customer service through the following channels:

- **Official Website:** Visit the YEELIGHT official website for FAQs, support resources, and contact information.
- **Email Support:** Refer to your product documentation for the customer support email address.
- **In-App Support:** The Yeelight app may offer a support section or direct contact options.

Please have your model number (YLYDD-0046) and proof of purchase ready when contacting support.

Related Documents - YLYDD-0046

	<p>Yeelight Smart LED Strip Lights User Manual and Specifications</p> <p>User manual and technical specifications for Yeelight Smart LED Strip Lights (5m, 10m, 20m models YLYDD-0091, YLYDD-0092, YLYDD-0093), covering installation, setup, features, and safety information.</p>
	<p>Yeelight Curtain Lights A24 User Manual</p> <p>User manual for the Yeelight Curtain Lights A24, providing setup, installation, and operational guidance for smart curtain lighting.</p>
	<p>Yeelight RGBIC LED Basic Strip Lights Quick Start Guide - YLYDD-0038</p> <p>Comprehensive quick start guide for the Yeelight RGBIC LED Basic Strip Lights (Model YLYDD-0038), covering installation, setup, specifications, and safety information.</p>
	<p>Yeelight YLFWD-0062 Smart Light User Manual and Installation Guide</p> <p>Comprehensive guide for the Yeelight YLFWD-0062 Smart Light, covering product accessories, installation, device resetting, network setup, usage instructions, basic parameters, and safety precautions.</p>
	<p>Yeelight Smart Bulb User Guide and Setup</p> <p>Get started with Yeelight smart bulbs. This comprehensive user guide covers packing list, step-by-step installation of the control box and bulbs, app connection, and download instructions for a smarter, colorful home lighting experience.</p>
<p>Stolní lampa Yeelight V1 Pro</p> <p>Uživatelská příručka</p>	<p>Yeelight V1 Pro Stolní Lampa Uživatelská Příručka</p> <p>Kompletní uživatelská příručka pro stolní lampu Yeelight V1 Pro, pokrývající montáž, provoz, ovládání aplikací, technické specifikace, bezpečnostní varování a informace o shodě.</p>