

[Manuals.plus](#) /

> [Brightup](#) /

> Brightup 5-in-1 Air Styler (Model HL-3030C) Instruction Manual

Brightup HL-3030C

Brightup 5-in-1 Air Styler

Model: HL-3030C | Brand: Brightup

1. SAFETY INFORMATION

Please read all safety instructions carefully before use.

- Keep out of reach of children.
- Do not rinse or submerge the main unit in water.
- Keep the power plug and cord away from heated surfaces.
- Do not use the hair styler while bathing or near water.
- Statements regarding dietary supplements have not been evaluated by the FDA and are not intended to diagnose, treat, cure, or prevent any disease or health condition.

2. PRODUCT OVERVIEW

The Brightup 5-in-1 Air Styler is a versatile hair styling tool designed to dry, curl, straighten, and volumize hair with advanced technology. It features a 1400W high-speed motor and 800 million negative ions to reduce frizz and enhance shine.

5 IN 1

Multifunctional Hair Dryer Styler



Image: Overview of the Brightup 5-in-1 Air Styler showcasing its multifunctional capabilities and various styling outcomes.

Key Features:

- **Multi-Function 5-in-1 Design:** Combines high-speed drying, volumizing, smoothing, and automatic curling.
- **1400W High-Speed Motor:** Delivers powerful airflow for fast drying and styling.
- **800 Million Negative Ions:** Reduces frizz, increases shine, and promotes smoother hair.
- **Coanda Effect Technology:** Utilizes airflow for automatic hair wrapping and curling.
- **Unique Cool-Air Tech:** Helps prolong hairstyle hold and reduces heat damage.
- **Ergonomic Design:** Lightweight handle and 360° swivel cord for comfortable and flexible styling.

3. PACKAGE CONTENTS

Your Brightup 5-in-1 Air Styler package includes the following components:



Image: All components of the Brightup 5-in-1 Air Styler, including the main unit, various brush heads, curling barrels, and accessories.

- **Main Styler Unit:** The core device with power and heat controls.
- **High-Speed Hair Dryer Attachment:** For rapid hair drying.
- **Thermal Brush Attachment:** 360° thermal brush with 800M negative ions for volumizing.
- **Paddle Brush Attachment:** For smoothing hair and scalp massage.
- **Automatic Curling Irons (2x 32mm):** One left-direction and one right-direction barrel for effortless curls.
- **Travel Bag:** For organized storage and portability.
- **Cleaning Brush:** To maintain the attachments.
- **Hair Clips:** For sectioning hair during styling.

4. SETUP

Attaching/Detaching Accessories:

1. Ensure the main styler unit is turned off and unplugged before attaching or detaching accessories.
2. Align the desired attachment with the main unit.
3. Push the attachment onto the main unit until you hear a click, indicating it is securely locked.
4. To detach, press the release button (usually indicated by a lock/unlock icon) on the main unit and twist the attachment to remove it. Allow hot attachments to cool before handling.

5. OPERATING INSTRUCTIONS

General Operation:

- Plug the styler into a 110-120V power outlet.
- Use the dial at the bottom of the main unit to select desired heat/speed setting: Low, Medium, or High.
- The styler also features a Cool Shot button for setting hairstyles.

Using the High-Speed Hair Dryer Attachment:

High-Speed Hair Dryer

120,000
Rpm

25m/s
Fast Drying



30s
Short Hair



2 min
Medium Hair



4 min
Long Hair

Image: A woman demonstrating the use of the high-speed hair dryer attachment, highlighting its fast-drying capabilities.

- Attach the High-Speed Hair Dryer.
- Select your preferred heat/speed setting.
- Direct the airflow towards your hair to quickly dry it. The 120,000 RPM motor delivers airflow up to 25m/s, reducing drying time significantly.

Using the Thermal Brush Attachment (Volumizing):

800 Million Negative Ions

360° Thermal Brush with Hot/Cold Air

↑ **+50%**
Smooth

↑ **+50%**
Shiny

↓ **-90%**
Frizz

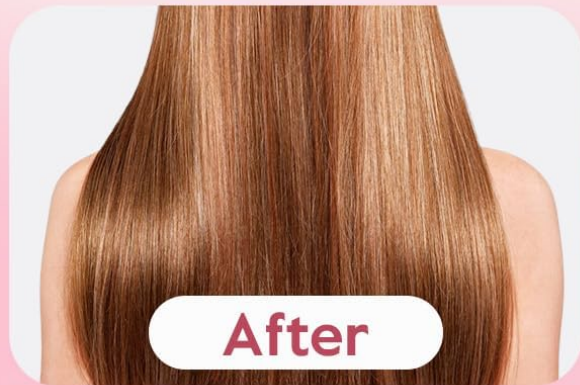
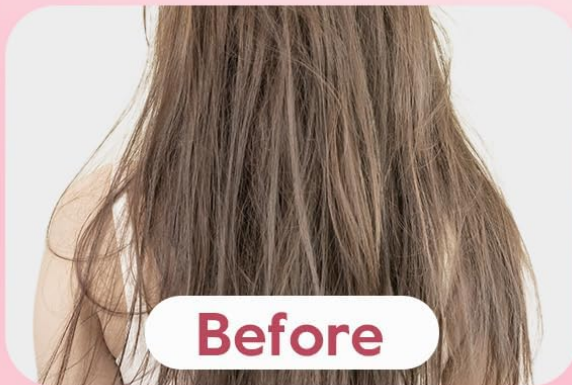


Image: The thermal brush attachment in use, illustrating how it reduces frizz and adds shine with negative ions.

- Attach the Thermal Brush.
- Work with small sections of slightly damp hair.
- Brush through your hair from roots to ends, lifting at the roots for added volume. The 800 million negative ions help to smooth and add shine.

Using the Paddle Brush Attachment (Smoothing):

- Attach the Paddle Brush.
- Brush through sections of hair to smooth and detangle. This attachment is ideal for achieving a sleek, straight look and massaging the scalp.

Using the Automatic Curling Irons:

Auto Airflow Curl

Self-wrap hair with left/right direction for curls or waves.

2 x 1.25"
Curlers



Image: Close-up of hair being styled into curls by the automatic curling iron, demonstrating the Coanda airflow.

- Select either the left or right automatic curling iron based on the desired curl direction.
- Take a small section of slightly damp hair.
- Hold the curling iron near the end of the hair section. The Coanda airflow will automatically attract and wrap the hair around the barrel.
- Hold for 10-15 seconds, then press the Cool Shot button for a few seconds to set the curl.
- Release the curl by pulling the styler downwards.

Utilizing Cool-Air Tech:

Upgrade Cold Air Tech

Long lasting hair care
in all aspects

↓ **-50%**
Heat Damage

↑ **+50%**
Hair Volume

↑ **+50%**
Lasting Time



Image: Visual representation of the advantages of using Cool-Air Tech, including 50% less heat damage, 50% more hair volume, and 50% longer lasting style.

- After styling with heat, activate the Cool Shot function to rapidly cool the hair section.
- This unique technology helps to prolong the hold time of your hairstyle by up to 50% and reduces heat damage by up to 90%.

6. MAINTENANCE

- Always unplug the styler and allow it to cool completely before cleaning.
- Use the provided cleaning brush to remove any hair or debris from the brush attachments.
- Wipe the main unit and attachments with a soft, damp cloth. Do not use abrasive cleaners.
- Ensure all parts are completely dry before storing.

- Store the styler and its attachments in the provided travel bag to keep them organized and protected.

7. TROUBLESHOOTING

Curly not holding:

- Ensure hair is slightly damp, not soaking wet or completely dry.
- Use a styling mousse or cream with hold before curling.
- Utilize the Cool Shot button after applying heat to each curl to set the style.
- Ensure hair sections are not too large.

Hair getting tangled:

- Ensure hair is thoroughly detangled before styling.
- Work with smaller, manageable sections of hair.
- Ensure the styler is moved smoothly through the hair without abrupt movements.

8. SPECIFICATIONS

Model Number	HL-3030C
Brand	Brightup
Wattage	1400 watts
Power Source	Corded Electric
Voltage	110-120V (US Voltage)
Material	Ceramic, Titanium
Product Dimensions	13.86 x 9.41 x 3.5 inches
Item Weight	3.4 Pounds

9. WARRANTY & SUPPORT

The Brightup 5-in-1 Hair Styler comes with a 2-year warranty for peace of mind.

For fast and convenient customer service, please contact us directly at **001 (848) 256-9372** if you have any questions or require assistance with your product.