

[Manuals.plus](#) /

› [MHW-3BOMBER](#) /

› MHW-3BOMBER 51mm Espresso Tamper with Sound Feedback (Model T6146-OS) - Instruction Manual

MHW-3BOMBER T6146-OS

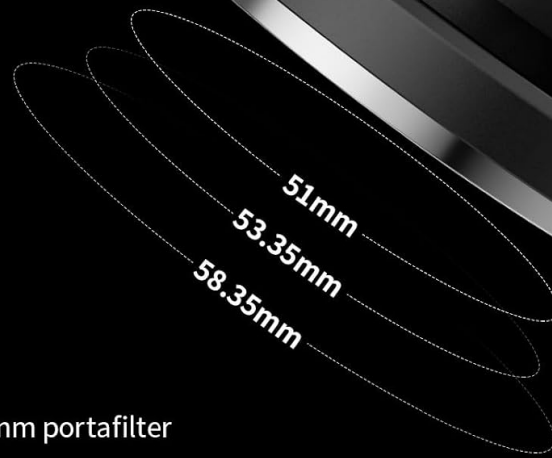
MHW-3BOMBER 51mm Espresso Tamper with Sound Feedback

INSTRUCTION MANUAL - MODEL T6146-OS

Introduction

This manual provides detailed instructions for the MHW-3BOMBER 51mm Espresso Tamper, Model T6146-OS. This precision tool is designed to ensure consistent and optimal tamping pressure for your espresso, featuring a unique 4-spring system and audible feedback. Proper use and maintenance will enhance your espresso extraction quality.

3 Size For Your Choice



51mm for 51mm portafilter

53.35mm for 53mm/53.3mm/54mm portafilter

58.35mm for 58mm/58.35mm/58.5mm portafilter

Image: The MHW-3BOMBER 51mm Espresso Tamper, showcasing its ergonomic design and robust construction.

Product Components

The MHW-3BOMBER Espresso Tamper is engineered with a multi-spring system for precise and consistent tamping. Familiarize yourself with its internal structure:

- **Top Cover:** The uppermost part of the tamper.
- **Handle:** Provides grip for operation.
- **Horizontal Spring:** Assists in tamping pressure and prevents tilting.
- **Impact Spring:** Maintains consistent tamping pressure.
- **Positioning Spring:** Adapts to the required compaction height.
- **Reset Spring:** Ensures precise reset after each use.
- **Pin:** Internal structural component.
- **Horizontal Cover:** Part of the horizontal stabilization mechanism.
- **Threaded Base:** The 51mm tamping surface.

Espresso Coffee Aesthetics Explore Endless Possibilities

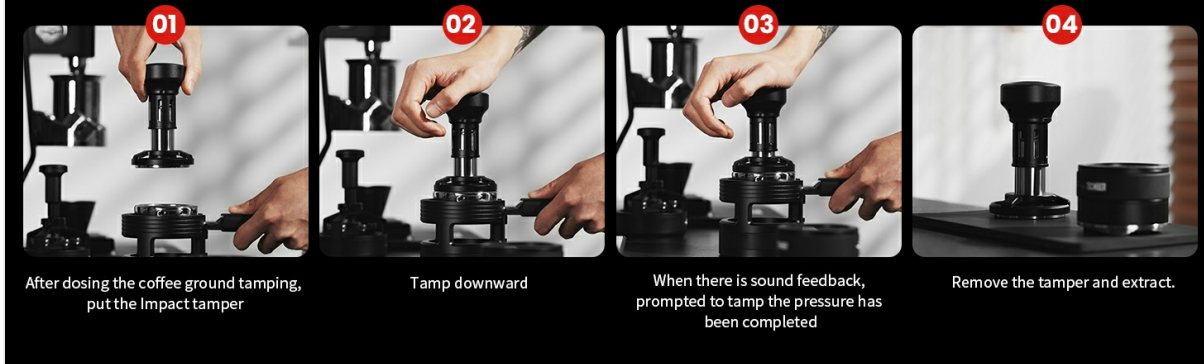


Image: Exploded diagram illustrating the internal components and spring system of the tamper.

Setup

1. **Unpacking:** Carefully remove the tamper from its packaging. Inspect for any signs of damage.
2. **Initial Cleaning:** Before first use, wipe the tamper base with a damp cloth to remove any manufacturing residues. Ensure it is completely dry.
3. **Compatibility Check:** This tamper is designed for 51mm portafilters. Verify your espresso machine's portafilter size for proper fit. Compatible models include DeLonghi Dedicca EC680/EC685/EC785/EC885, EC850.M, La Specialista EC9355/EC9155/EC9665/EC9865, and Stilosa EC235.



Image: Visual guide for tamper size compatibility, highlighting the 51mm option.

Operating Instructions

Follow these steps for consistent and effective coffee tamping:

1. **Dose and Distribute:** After dosing your ground coffee into the portafilter basket, ensure an even distribution of the coffee grounds.
2. **Position the Tamper:** Place the MHW-3BOMBER tamper squarely on top of the coffee grounds in the portafilter. The horizontal spring system helps prevent tilting, ensuring a level tamp.
3. **Apply Pressure:** Press down firmly on the tamper. The internal impact spring will apply consistent pressure. Continue pressing until you hear a distinct "click" sound. This audible feedback indicates that the preset tamping pressure has been achieved.



Image: Step-by-step guide on how to use the tamper for optimal espresso preparation.

The tamper's design ensures that it automatically adapts to the height of the coffee grounds, requiring no manual adjustment for depth. The maximum tamping depth is 13mm.

Press to Rebound No Adjustment Required

Automatically adapts to height
Max depth 13mm

*When the tamper is pressed down, the internal structure triggers the spring to release, producing audible feedback.

Image: Illustration of the tamper's automatic height adaptation and spring rebound mechanism.

The silicone top cover provides a comfortable grip and protects your palm during frequent use, making the tamping process easier and more ergonomic.



SUS304 Thread Base Ultimate Durability



Anti-oxidation



Corrosion-resistant



Easy to clean

Silicone Top Cover Comfortable Pressing, Protective Palm

Image: Details of the SUS304 threaded base and the comfortable silicone top cover.

Maintenance

- **Cleaning:** After each use, wipe the tamper base with a clean, damp cloth to remove any coffee residues. Ensure the tamper is completely dry before storage.
- **Do Not Dishwash:** This tamper is not dishwasher safe. Hand wash only.
- **Storage:** Store the tamper in a dry place away from direct sunlight and extreme temperatures to preserve its materials and functionality.
- **Material Care:** The robust aluminum alloy construction is designed for anti-corrosion and anti-oxidation. Avoid abrasive cleaners or tools that could scratch the surface.

Troubleshooting

- **Inconsistent Tamping:** Ensure the coffee grounds are evenly distributed in the portafilter before tamping. Apply steady, downward pressure until the audible "click" is heard.
- **No "Click" Sound:** Verify that sufficient pressure is being applied. The tamper requires a certain force to trigger the sound feedback mechanism. If the issue persists, ensure no debris is obstructing

the internal spring mechanism.

- **Tamper Not Level:** The horizontal spring system is designed to prevent tilting. Ensure you are placing the tamper straight down onto the coffee bed. If the issue persists, check for any damage to the tamper's base or internal structure.

Specifications

Brand	MHW-3BOMBER
Model Name	YU Series Espresso Tamper
Model Number	T6146-OS
Color	Black
Dimensions (D x W x H)	10.9 x 6.6 x 6.6 cm (4.3 x 2.6 x 2.6 inches)
Special Feature	Sound Feedback
Material	Aluminum, Silicone
Product Weight	1 Pound (approx. 0.45 kg)
Operation	Manual
Dishwasher Safe	No

Warranty and Support

For warranty information or technical support, please refer to the official MHW-3BOMBER website or contact their customer service directly. Keep your purchase receipt for any warranty claims.