

[manuals.plus](#) /

› [APPECK](#) /

› [APPECK Smart Landscape Lights User Manual](#)

APPECK C6612-D

APPECK Smart Landscape Lights User Manual

Model: C6612-D

Your guide to setting up, operating, and maintaining your APPECK outdoor lights.

PRODUCT OVERVIEW

The APPECK Smart Landscape Lights are designed to enhance your outdoor space with vibrant, customizable lighting. Featuring RGBW color-changing capabilities, these low-voltage spotlights offer versatile control options via a dedicated app, remote, or voice commands. Built for durability, they are IP65 waterproof and resistant to extreme temperatures, ensuring reliable performance in various outdoor conditions.



Image: The APPECK Smart Landscape Lights 6-pack, showcasing the lights, remote control, and smartphone app interface.

What's in the Box

- 6 Pack of lights
- Remote Control
- Control Box
- Mounting Hardware (ground stakes and screws)
- Transformer or Power Supply

Setup and Installation

The APPECK Smart Landscape Lights are designed for easy installation with two primary mounting options: ground staking or wall mounting. Ensure you have a suitable low-voltage power source nearby.

Mounting Options:

- **Ground Staking:** Simply attach the provided ground stakes to the spotlights and firmly insert them into the ground in your desired location.
- **Wall Mounting:** Use the included screws and mounting hardware to secure the spotlights to walls or other solid surfaces. The lights can be rotated to any angle for optimal illumination.

IP65 Waterproof

Professionally insulated and waterproof, designed for the outdoors



104°F High
Temperature Resistant



-4°F Low
Temperature Resistant



IP65 Fully
Waterproof



+30% Enhanced
Brightness

Image: Illustration showing two installation methods: staking into the ground and mounting on a wall, with lights adjustable to various angles.

Wiring and Power:

Connect the lights in series using the provided cables. The sufficient cable length between each light allows for flexible placement. Plug the transformer into a suitable outdoor power outlet.

Sufficient Cable Length



Image: A diagram illustrating the cable lengths between the lights and the power supply, indicating flexibility in arrangement.

App Connection:

Download the "Smart Life" app. Ensure your Wi-Fi network is 2.4 GHz, as 5 GHz Wi-Fi is not supported. Follow the in-app instructions to pair your lights. This typically involves pressing and holding the on/off button on the control box until the lights blink red, then adding the device in the app.

Your browser does not support the video tag.

Video: An official product video demonstrating the setup and features of the APPECK Outdoor Landscape Spotlights, including app control and various lighting effects.

OPERATING INSTRUCTIONS

The APPECK Smart Landscape Lights offer multiple ways to control your lighting experience.

Control Methods:

- **Smart Life App:** Provides comprehensive control over individual lights, color selection (16 million RGB colors), brightness (1%-100% adjustable), and access to 111+ customized scene modes. You can also program, save, favorite, and cycle through scenes.
- **Remote Control:** Use the included remote for basic functions like turning lights on/off, changing colors, and adjusting brightness.
- **Control Box:** A physical control box on the wiring allows for basic on/off and mode changes.
- **Voice Control:** Integrate with Amazon Alexa or Google Assistant for convenient hands-free commands. (e.g., "Alexa, turn on the spotlights.")

Customize Your Garden

Enhance your outdoor experience



Dazzling



Gorgeous



Halloween



Christmas

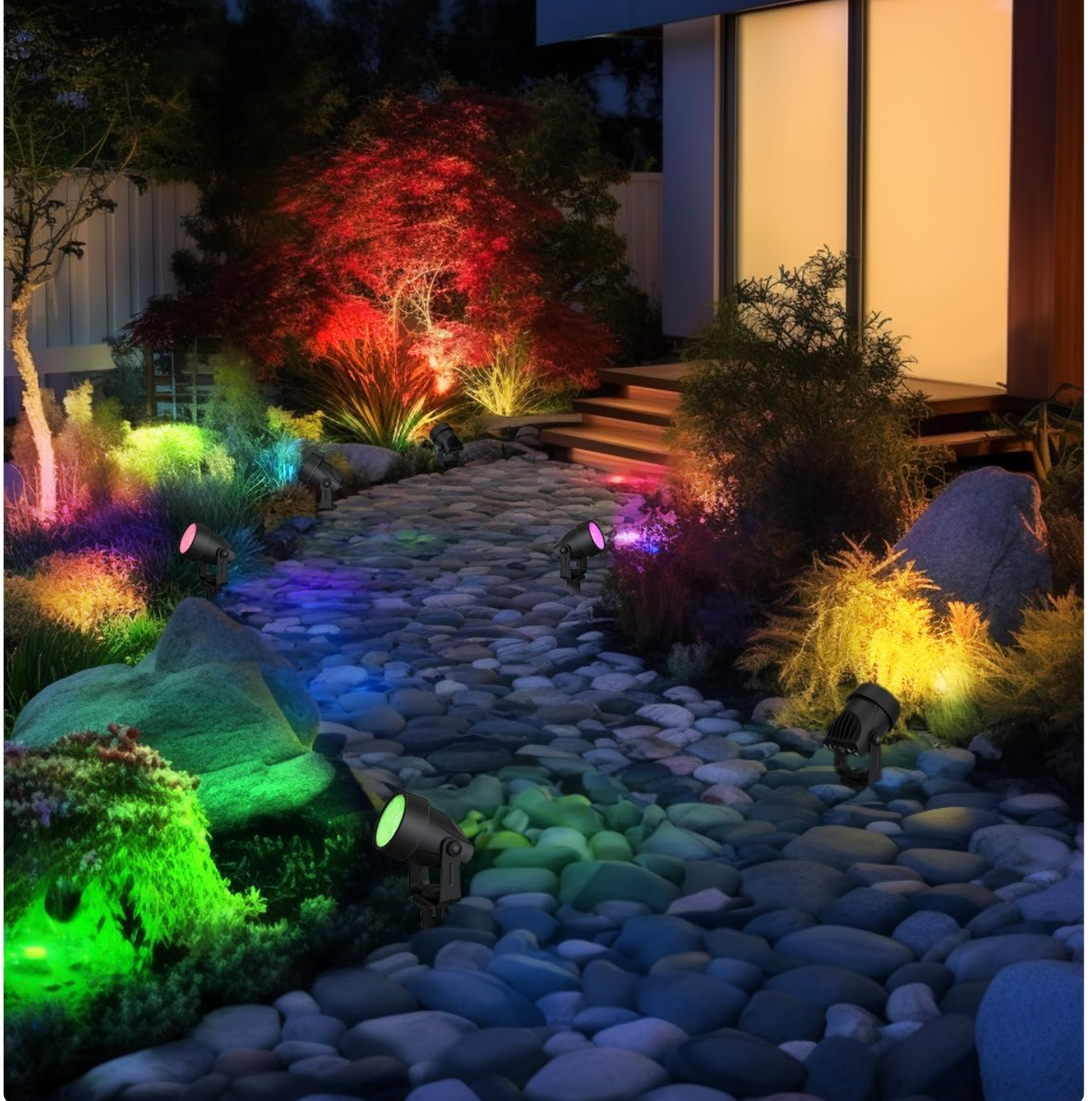


Image: The RGBW color-changing capability of the lights, displaying a spectrum of colors.

Hands Free for Voice Control



"Alexa, turn on the spotlight"

"Okey"

Image: An outdoor garden illuminated with various colors from the APPECK spotlights, demonstrating customization.

Easy to Install

Two mounting options



Image: A patio scene with APPECK lights, showing integration with Amazon Alexa and Google Assistant for voice commands.



Image: A screenshot of the Smart Life app interface demonstrating color selection and control for the lights.

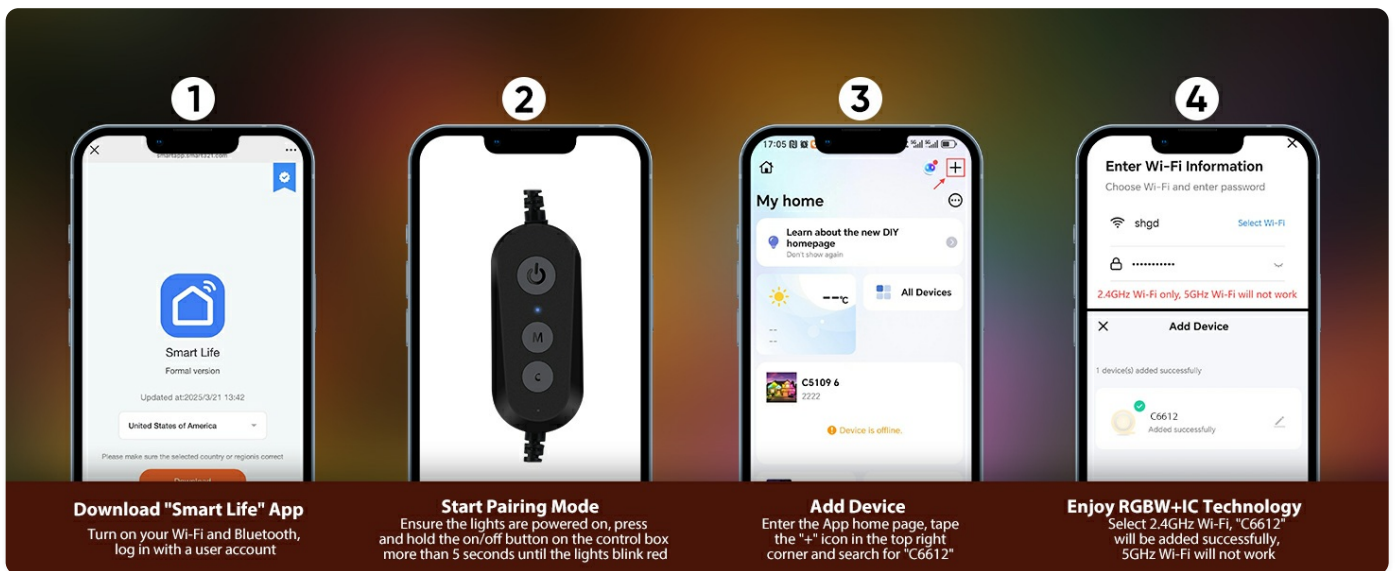


Image: A visual representation of the timer and scheduling feature, showing lights turning on at dusk and off in the morning.

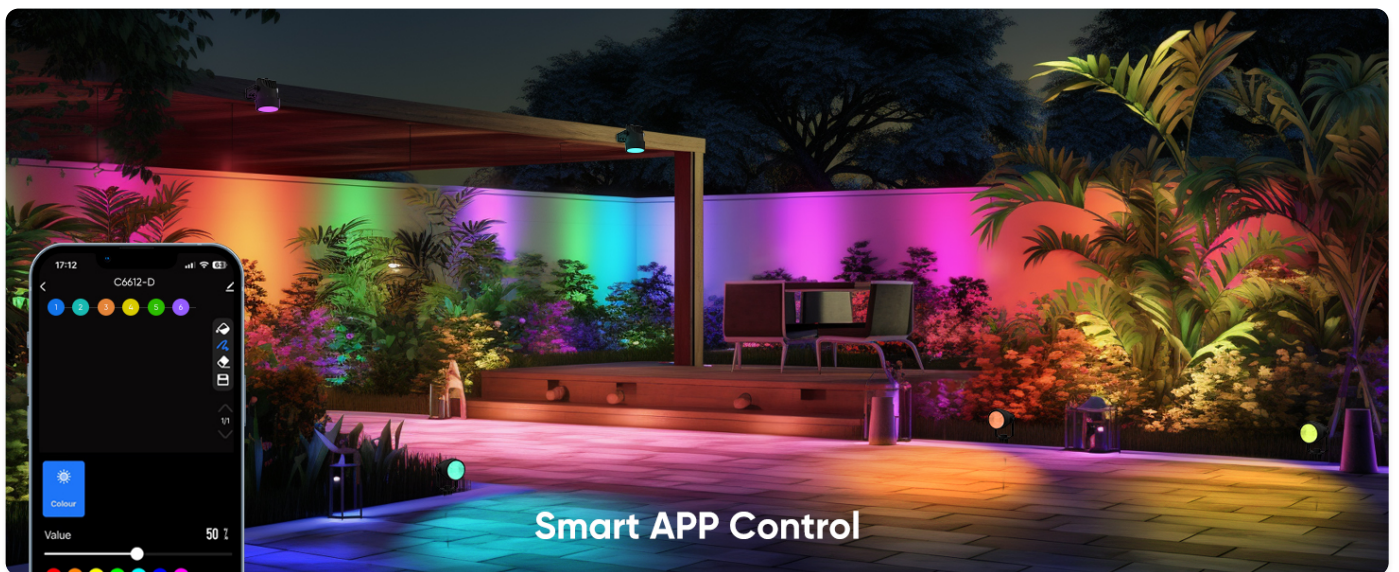


Image: A scene showing outdoor lights changing colors in sync with music, controlled via the app.

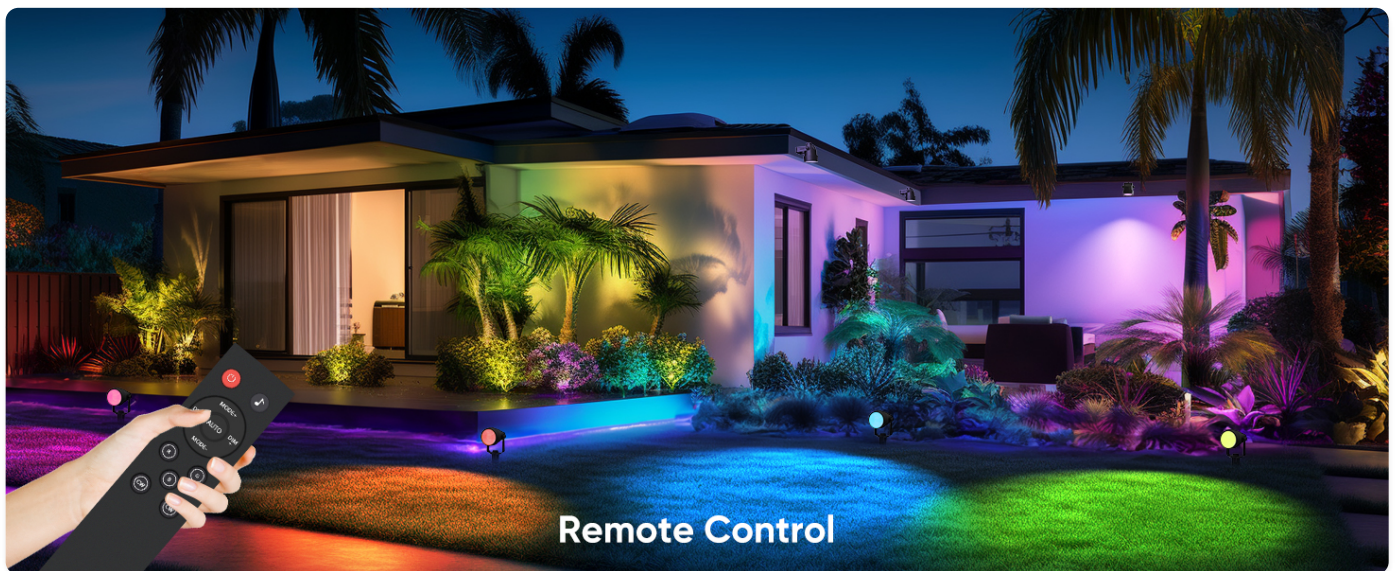


Image: The app interface demonstrating the ability to control each individual spotlight's color and settings.

MAINTENANCE

The APPECK Smart Landscape Lights are built for durability and require minimal maintenance.

- **Weather Resistance:** These lights feature an IP65 waterproof rating, ensuring they function effectively in heavy rain, snow, and extreme temperatures ranging from -4°F to 140°F.
- **Cleaning:** Periodically wipe down the light fixtures with a soft, damp cloth to remove dirt and debris. Avoid using harsh chemicals or abrasive materials.
- **Inspection:** Regularly check the wiring and connections for any signs of wear or damage. Ensure all connections remain secure to maintain optimal performance.

IP65 Waterproof

Professionally insulated and waterproof, designed for the outdoors



104°F High
Temperature Resistant



-4°F Low
Temperature Resistant



IP65 Fully
Waterproof



+30% Enhanced
Brightness

Image: A close-up of an APPECK spotlight in a garden setting, demonstrating its IP65 waterproof rating during rainfall.

TROUBLESHOOTING

If you encounter any issues with your APPECK Smart Landscape Lights, refer to the following common solutions:

Problem	Possible Cause / Solution
Lights not turning on.	Check power supply connection. Ensure the control box is receiving power. Verify lights are properly connected in series.
App connection issues.	Confirm your Wi-Fi network is 2.4 GHz (5 GHz is not supported). Ensure Bluetooth is enabled on your device during pairing. Try resetting the lights by unplugging and replugging the power. Re-attempt pairing process in the "Smart Life" app.
Lights not responding to remote/app.	Check remote battery (if applicable). Ensure line of sight for remote control. Verify app is connected to the correct device.
Timing function not working correctly.	Ensure the timing settings are saved within the app. Check for correct time zone settings in the app.

SPECIFICATIONS

Feature	Detail
Brand	APPECK
Model Name	C6612-D
Color	Black
Material	Plastic
Light Fixture Form	Spotlight
Product Dimensions	22"L x 20"W x 12"H
Specific Uses For Product	Outdoor use only
Indoor/Outdoor Usage	Outdoor
Power Source	DC
Installation Type	Surface Mount
Control Method	App
Light Source Type	LED
Number of Light Sources	6
Voltage	24 Volts (DC)
Light Color	Multicolor
Wattage	15 watts

Feature	Detail
Brightness	1200 lumen
Water Resistance Level	Water Resistant (IP65)
Operating Temperature	-4°F to 140°F


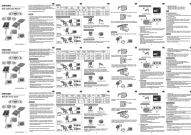
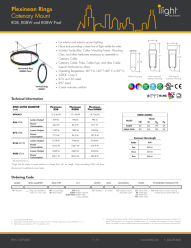

WARRANTY AND SUPPORT


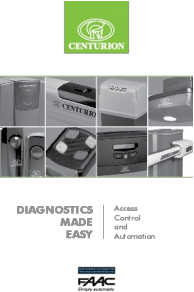
For product support, troubleshooting assistance, or warranty inquiries, please visit the official APPECK Store on Amazon or contact their customer service directly.

[Visit the APPECK Store](#)

Protection plans are available for purchase separately through Amazon, offering extended coverage for your product.

Related Documents - C6612-D

	<p>Meihua B04-21SP-H-D Solar Spotlights User Manual - Outdoor Garden Lighting</p> <p>Comprehensive user manual for Meihua B04-21SP-H-D solar spotlights. Learn about installation, operation, features, and specifications for these IP66 waterproof outdoor garden lights available in warm, neutral, and cool white.</p>
	<p>MEIKEE Solar RGB Floodlight User Manual and Specifications</p> <p>Comprehensive user manual for the MEIKEE Solar RGB Floodlight, detailing installation, operation, specifications, and troubleshooting for this IP66 waterproof, remote-controlled solar lighting solution.</p>
	<p>Plexineon Rings Catenary Mount: RGB, RGBW, and RGBW Pixel LED Lighting Specifications</p> <p>Detailed specifications for Luminii's Plexineon Rings Catenary Mount series, including RGB, RGBW, and RGBW Pixel LED lighting solutions. Features, technical data, ordering information, and power/control options for architectural applications.</p>
	<p>Colourliving Goose Garden Figure - User Guide and Safety Information</p> <p>User guide and safety information for the Colourliving Goose Garden Figure, a decorative item not suitable for children under 3 years.</p>

	<p>LLURIA D-JE19,2 RGBW Waterproof IP67 Digital LED Strip Technical Specifications</p> <p>Detailed technical specifications, dimensions, and connection diagrams for the LLURIA D-JE19,2 RGBW Waterproof IP67 Digital LED Strip. Includes product overview, assembly instructions, and safety warnings.</p>
	<p>Centurion Systems Diagnostics Made Easy: Access Control and Automation Guide</p> <p>This guide provides comprehensive troubleshooting and diagnostic information for Centurion access control and automation products, including sliding gate operators, swing gate operators, traffic barriers, intercom systems, and garage door operators. It details common fault conditions, error messages, and solutions to help users resolve technical challenges.</p>

Documents - APPECK – C6612-D



RGBW Smart Gartenstrahler

Benutzer Handbuch

Modell C6612

[\[pdf\]](#) User Manual Frequently Asked Questions

C6612 Benutzer Handbuch20°C 40°C IP65 RGBW 3000K Leistung Adapter 2 4G Wifi Bluetooth Taste Fernbedienung 12W 18W 24W Länge Lichtschnüre 12m 40ft 18m 59ft 24m 78ftA1VNkoVeRCLm media amazon images | A1VNkoVeRCL ref dp product quick view |||

RGBW Smart Gartenstrahler Benutzer Handbuch Modell C6612 Inhalt Sicherheit Anweisungen Packliste P ... ziehen Mutter 4 Gecko Schraubenpaket 4 Erdungsstecker 4 Benutzer Handbuch 1 Fernsteuerung 1 **C6612-D** 1 1 6 6 6 1 1 C6612-E 1 1 8 8 8 1 1 3 Produkt Gr e 1000mm 1500mm 2700mm 3.28ft 4.9... lang:de **score:19** filesize: 1.36 M page_count: 24 document date: 2024-11-11